

US STEEL KOSICE/SLOVAKIA
50.3023.01
SUBSTATION T81

MEASUREMENT
CIRCUIT DIAGRAM

A = L06

/ A01

D009781.01. 606-3.AHA

50.3023.01-A4-741-108
COVER SHEET
PANEL
06

DATE :	06.06.2005
prep. :	Hähncke
Check:	Grohmann
Norm :	

07.12.2006 HJ015ME
=L06
A01
ADAM

03 AS BUILT	5.12.2006	AD
02 FACT.-REV.	30.10.2005	BL
01 Approval	30.06.2005	Hie
Nr. Alteration	Date	Name

Copyright as per DIN 34 to be observed!

07.12.2006

1		2		3		4		5		6		7		8	
CLIENT DOCUMENT NUMBER		RELEASE BY DOCUMENT NUMBER		VERSION STATUS		DOCUMENT IDENTIFICATION SORT MATCHING		ITEM NO.		SHEET		DESIGN			
A	50.3023.01-A4-741-	108	D009781.01.606-3.AHA	01	02	03	A =L06	A01	1	COVER SHEET		06			
	50.3023.01-A4-741-			01	02	03	A =L06	A02	2	CIRCUIT DIAGRAM		06			
	50.3023.01-A4-741-			01	02	03	A =L06	B01	3	Inhaltsverzeichnis		06			
	50.3023.01-A4-741-			01	02	03	S =L06	D01	4	CIRCUIT DIAGRAM		AC-DISTRIBUTION			
	50.3023.01-A4-741-			01	02	03	S =L06	B01	5	CIRCUIT DIAGRAM		DC DISTR.			
	50.3023.01-A4-741-			01	02	03	S =L06	B01	6	CIRCUIT DIAGRAM		INTERFACE			
	50.3023.01-A4-741-			01	02	03	S =L06	R01	7	CIRCUIT DIAGRAM		SIGNALLING			
	50.3023.01-A4-741-			01	02	03	S =L06	T01	8	CIRCUIT DIAGRAM		VOLTAGE TRANSF.			
	50.3023.01-A4-741-			01	02	03	S =L06	V01	9	CIRCUIT DIAGRAM		SPARE CONTACTS			
	50.3023.01-A4-741-			01	02	03	S =L06	Z1F1	10	LIST OF EQUIPMENT		06			
B	50.3023.01-A4-741-	108	D009781.01.606-3.AHA	01	02	03	S =L06	Z1K1	11	LIST OF EQUIPMENT		06			
	50.3023.01-A4-741-			01	02	03	S =L06	Z1P1	12	LIST OF EQUIPMENT		06			
	50.3023.01-A4-741-			01	02	03	S =L06	Z1R1	13	LIST OF EQUIPMENT		06			
	50.3023.01-A4-741-			01	02	03	S =L06	Z2S1	14	LIST OF EQUIPMENT		06			
	50.3023.01-A4-741-			01	02	03	S =L06	Z3Q1	15	LIST OF EQUIPMENT		06			
	50.3023.01-A4-741-			01	02	03	S =L06	Z3T1	16	LIST OF EQUIPMENT		06			
	50.3023.01-A4-741-			01	02	03	V =L06 +S1.R	K01	17	TERMINAL DIAGRAM		06			
	50.3023.01-A4-741-			01	02	03	V =L06 +S1.R	K40	18	TERMINAL DIAGRAM		06			
	50.3023.01-A4-741-			01	02	03	V =L06 +S1.R	K60	19	TERMINAL DIAGRAM		06			
	50.3023.01-A4-741-			01	02	03	V =L06 +S1.R	K80	20	TERMINAL DIAGRAM		06			
C	50.3023.01-A4-741-	108	D009781.01.606-3.AHA	01	02	03	V =L06 +S1.R	K90	21	TERMINAL DIAGRAM		06			
	50.3023.01-A4-741-			01	02	03	V =L06 +S1.R	XPE	22	TERMINAL DIAGRAM		06			
	50.3023.01-A4-741-			01	02	03	V =L06 +S1.R	Q10	23	GROSS CONNECT. LIST		RELAY BOX			
	50.3023.01-A4-741-			01	02	03	V =L06 +S1.R	S01	24	PLUG DIAGRAM		CIRCUIT-BREAKER			
	50.3023.01-A4-741-			01	02	03	V =L06 +S1.R	Q15	25	GROSS CONNECT. LIST		RELAY BOX			
	50.3023.01-A4-741-			01	02	03	V =L06 +S1.R	Q30	26	GROSS CONNECT. LIST		SWITCHING TRUCK			
	50.3023.01-A4-741-			01	02	03	V =L06 +S3	S01	27	PLUG DIAGRAM		CIRCUIT-BREAKER			
D	50.3023.01-A4-741-	108	D009781.01.606-3.AHA												
	50.3023.01-A4-741-														
	50.3023.01-A4-741-														
	50.3023.01-A4-741-														
	50.3023.01-A4-741-														
	50.3023.01-A4-741-														
	50.3023.01-A4-741-														
	50.3023.01-A4-741-														
	50.3023.01-A4-741-														
	50.3023.01-A4-741-														
E	50.3023.01-A4-741-	108	D009781.01.606-3.AHA												
	50.3023.01-A4-741-														
	50.3023.01-A4-741-														
	50.3023.01-A4-741-														
	50.3023.01-A4-741-														
	50.3023.01-A4-741-														
	50.3023.01-A4-741-														
	50.3023.01-A4-741-														
	50.3023.01-A4-741-														
	50.3023.01-A4-741-														
F	50.3023.01-A4-741-	108	D009781.01.606-3.AHA												
	50.3023.01-A4-741-														
	50.3023.01-A4-741-														
	50.3023.01-A4-741-														
	50.3023.01-A4-741-														
	50.3023.01-A4-741-														
	50.3023.01-A4-741-														
	50.3023.01-A4-741-														
	50.3023.01-A4-741-														
	50.3023.01-A4-741-														

02	AS BUILT	5.12.2005	AD	Date	06.06.2005	US STEEL KOSTICE/SLOVAKIA
03	FACT -REV.	30.10.2005	BL	Drawn	Hönicke	50.3023.01
01	Approval	30.06.2005	Hoe	Checked	Grohmann	SUBSTATION T81
NO.	Alteration	Date	Name	Std.	Iss.for	Orig.

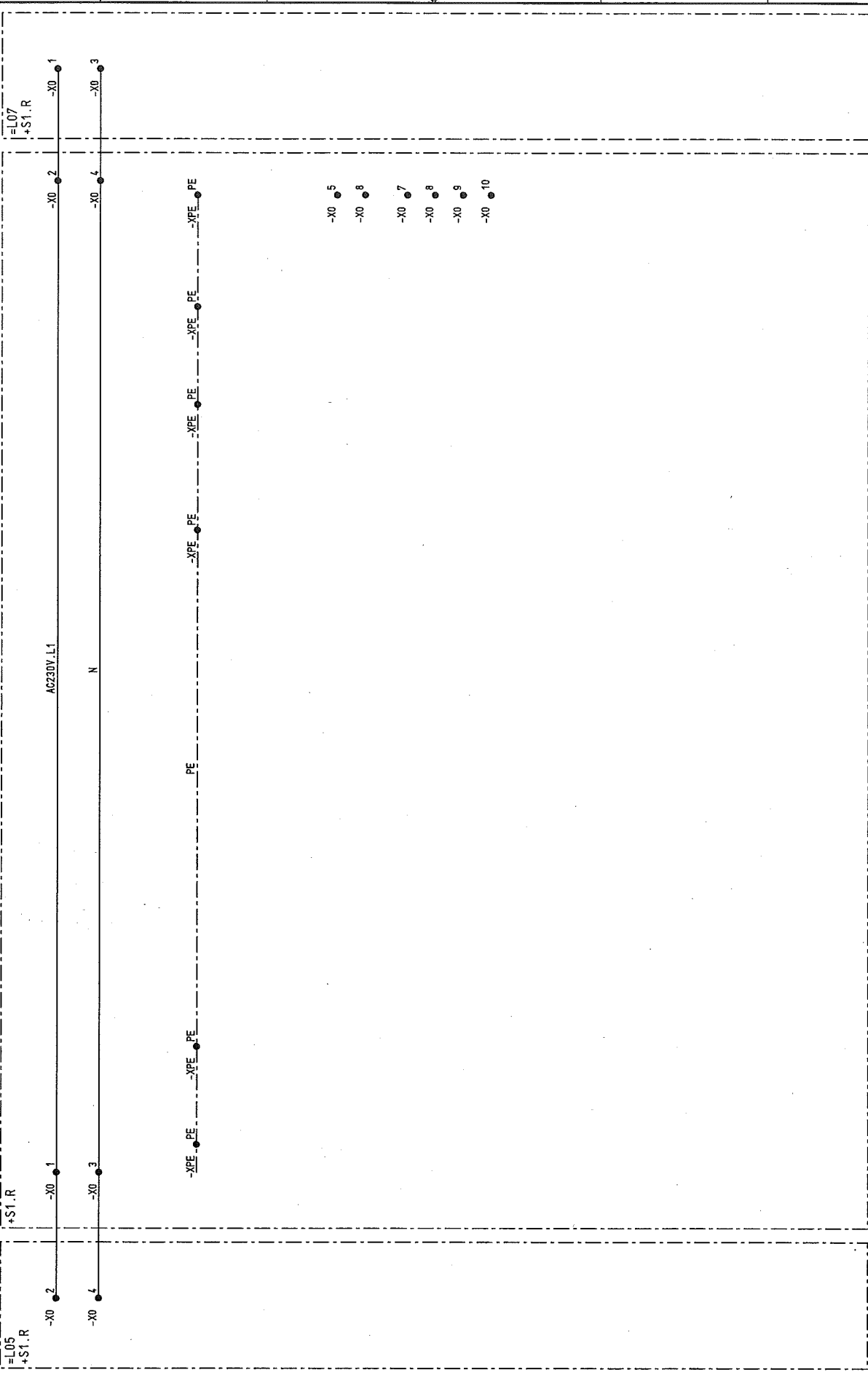
AREVA		Inhaltsverzeichnis	50.3023.01-A4-741-108	A =L06	/ B01
PANEL		06	Typ: 04	MEASUREMENT	D009781.01.606-3.AHA
Iss.by:		4	5	6	7

SHEET		DESIGN			
1		1		06	
2		2		06	
3		3		06	
4		4		06	
5		5		06	
6		6		06	
7		7		06	
8		8		06	
9		9		06	
10		10		06	
11		11		06	
12		12		06	
13		13		06	
14		14		06	
15		15		06	
16		16		06	
17		17		06	
18		18		06	
19		19		06	
20		20		06	
21		21		06	
22		22		06	
23		23		06	
24		24		06	

Copyright as per DIN 34 to be observed!

07.12.2006
HJ0115ME
L06
DO1
ADAM

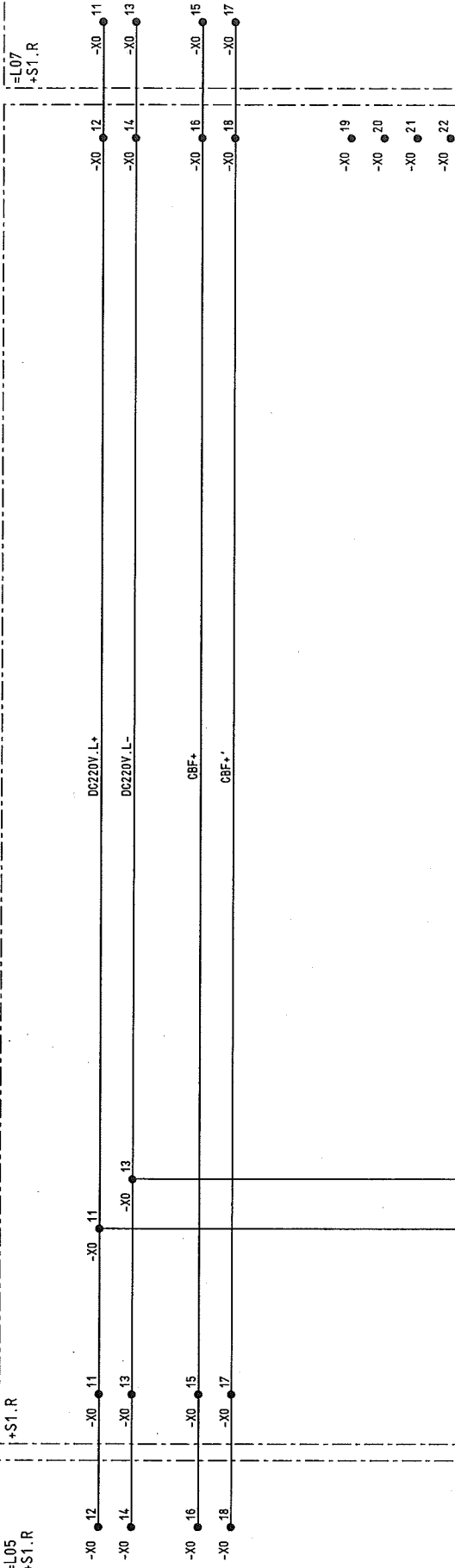
00978101



03	AS BUILT	5.12.2005	AD	Date	06.06.2005	US STEEL KOSTICE/SLOVAKIA	CIRCUIT DIAGRAM	50.3023.01-44-741-408	S=L06	/ DO1
02	FACT.-REV.	30.10.2005	BL	Drawn	Hänicke	50.3023.01	AC-DISTRIBUTION			
01	Approval	30.06.2005	He	Checked	Grohmann	SUBSTATION T81	PANEL			Sheet 4
NO.	Alteration	Date	Name/Std.	Iss. for	Iss. by:	Orig.	06	MEASUREMENT	D009781.01.606-3.AHA	27Sh.

00978101 Copyright as per DIN 34 to be observed!

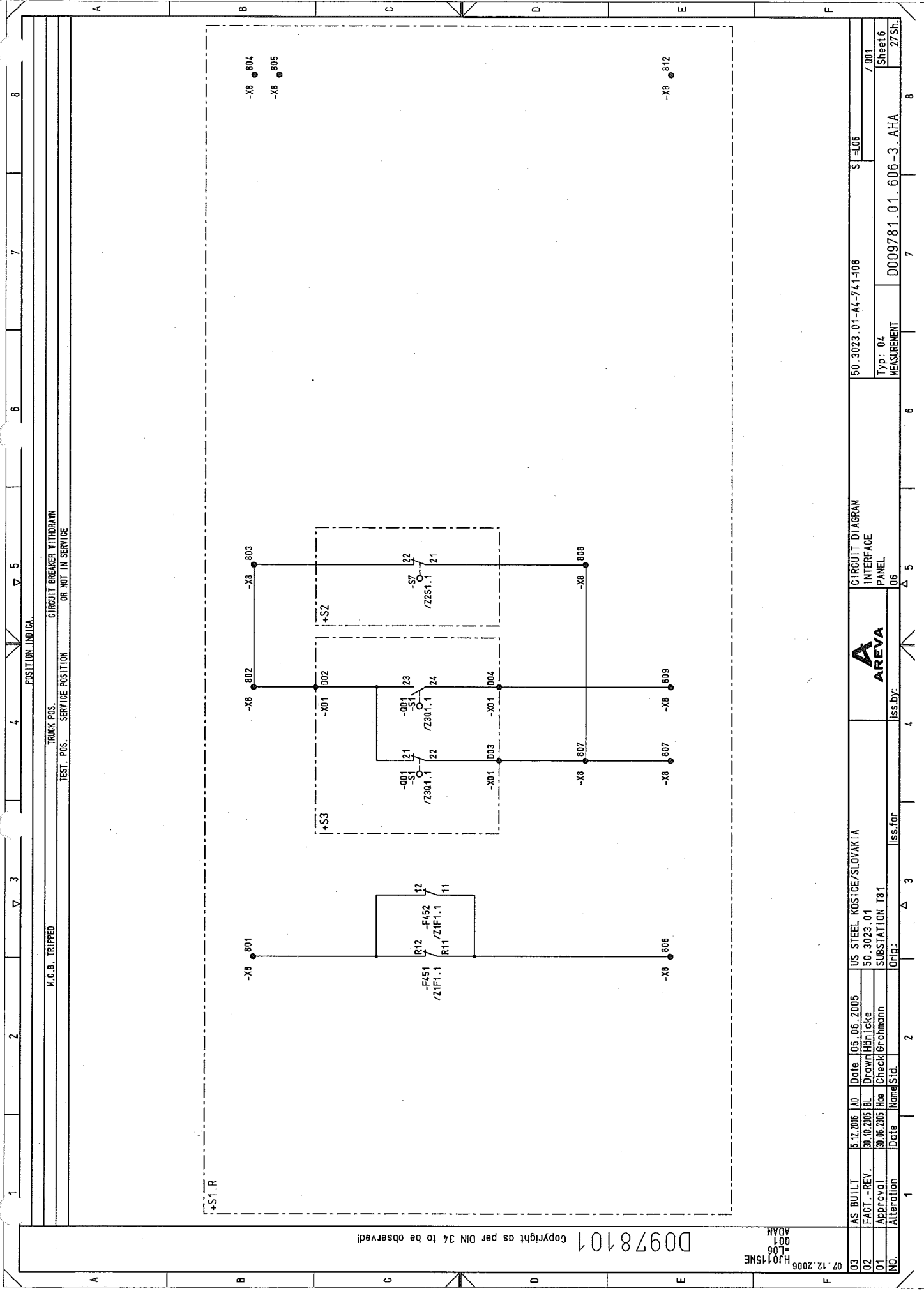
07.12.2006
HJ0115ME
L06
601
ADAM



03	AS BUILT	15.12.2005	AD	Date	06.06.2005	US STEEL KOSICE/SLOVAKIA
02	FACT.-REV.	20.10.2005	BL	Drawn	Hänicke	50.3023.01
01	Approval	20.06.2005	Haa	Checked	Grohmann	SUBSTATION T81
NO.	Alteration	Date	None	Std.	Orig.	Iss. for

AREVA		CIRCUIT DIAGRAM
DC DISTR.		PANEL
06		06
Iss. by:		Iss. for

50.3023.01-44-741-408		S	L06
Typ: 04		MEASUREMENT	
D009781.01.606-3.AHA		Sheet 5	
27Sh.		/ 601	



Copyright as per DIN 34 to be observed!

07.12.2006
HJ0115ME
L06
001
ADAM

03	AS BUILT	5.12.2005	AD	Date	06.06.2005	US STEEL KOSTICE/SLOVAKIA	CIRCUIT DIAGRAM	50.3023.01-A4-741-408	S=L06	/001
02	FACT.-REV.	30.10.2005	BL	Drawn	Hänicke	50.3023.01	INTERFACE			
01	Approval	30.06.2005	Haa	Checked	Grohmann	SUBSTATION T81	PANEL			
NO.	Alteration	Date	Nome	Std.	Orig.	Iss.for	Iss.by:	D009781.01.606-3.AHA	MEASUREMENT	Sheet6 27Sh.



CIRCUIT DIAGRAM
INTERFACE
PANEL

50.3023.01-A4-741-408

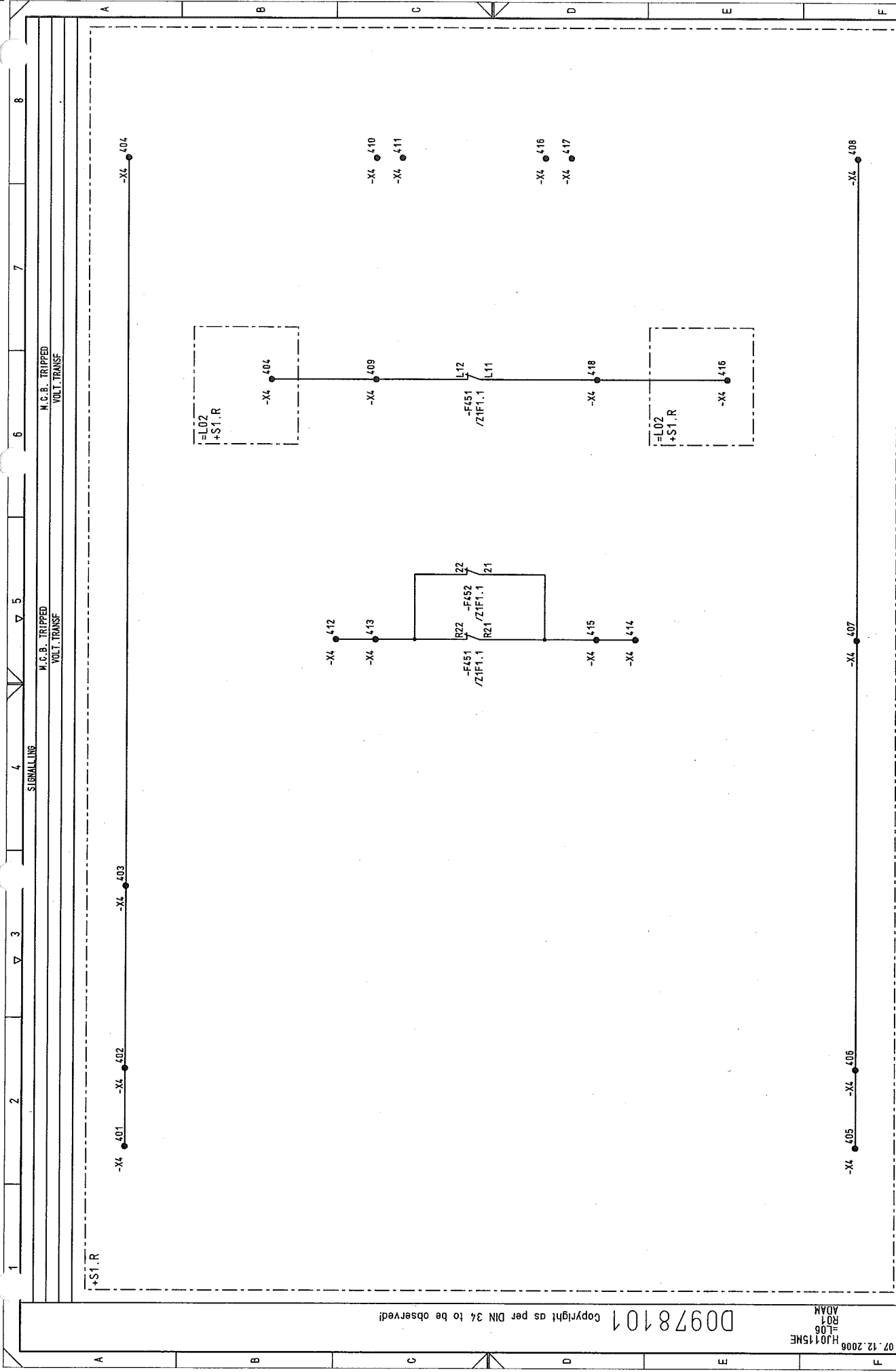
/001

Sheet6
27Sh.

MEASUREMENT

D009781.01.606-3.AHA

Iss.for



Copyright as per DIN 34 to be observed!

07.12.2006
HJ0115ME
L06
R01
ADM

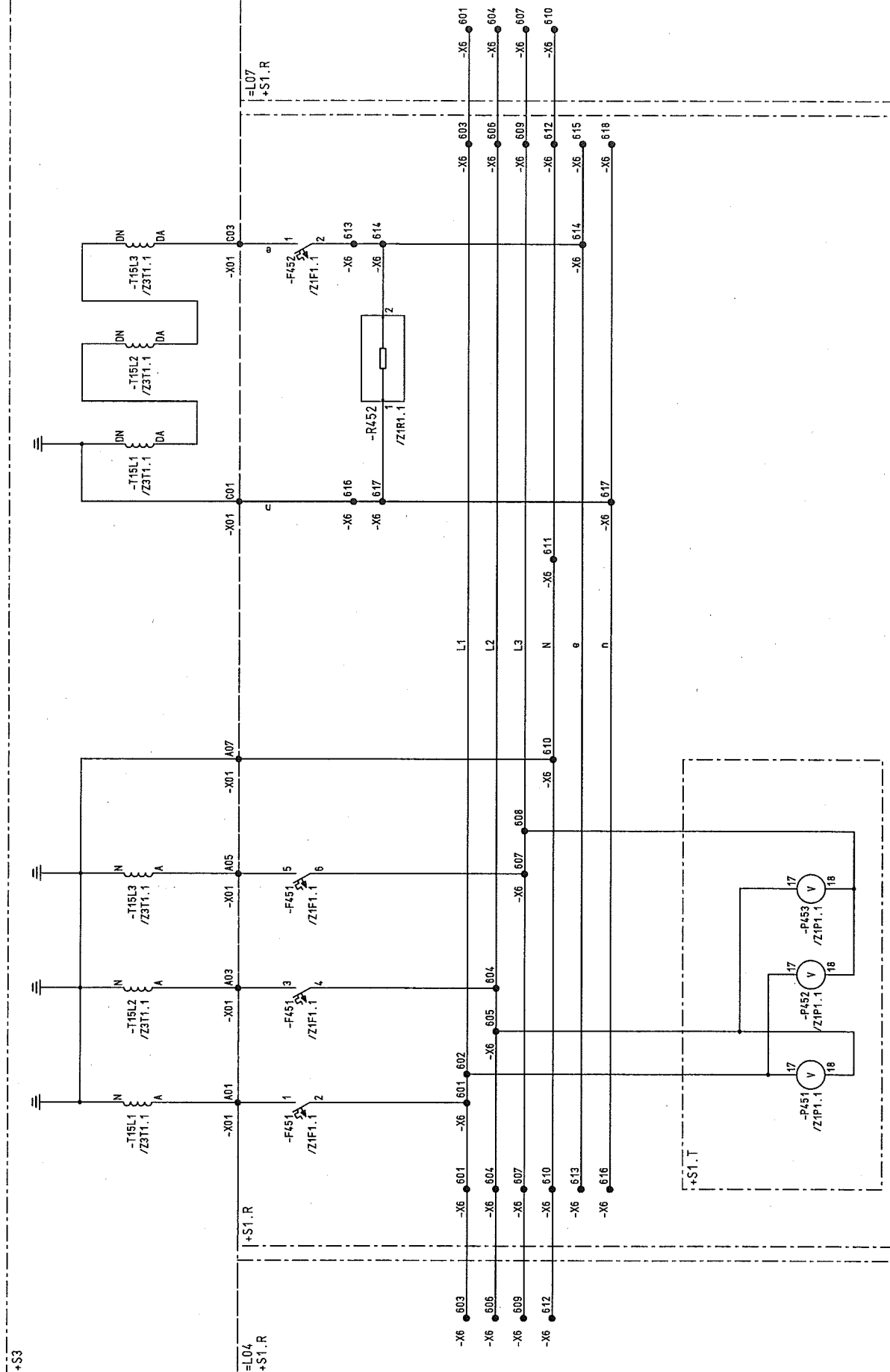
03	AS BUILT	5.12.2005	AD	Date	06.06.2005	US STEEL KOSTICE/SLOVAKIA	CIRCUIT DIAGRAM	150.3023.01-A4-741-408	S	L06	/ R01
02	FACT - REV.	30.10.2005	BL	Drawn	Hönicke	50.3023.01	SIGNALING				Sheet 7
01	Approval	30.06.2005	Hoe	Checked	Grohmann	SUBSTATION T81	PANEL				27 Sh
NO.	Alteration	Date	Nomd	Std.	Iss	for	Iss	by	06	MEASUREMENT	D009781.01.606-3.AHA



VOLTAGE TRANSF.

PROTECTION

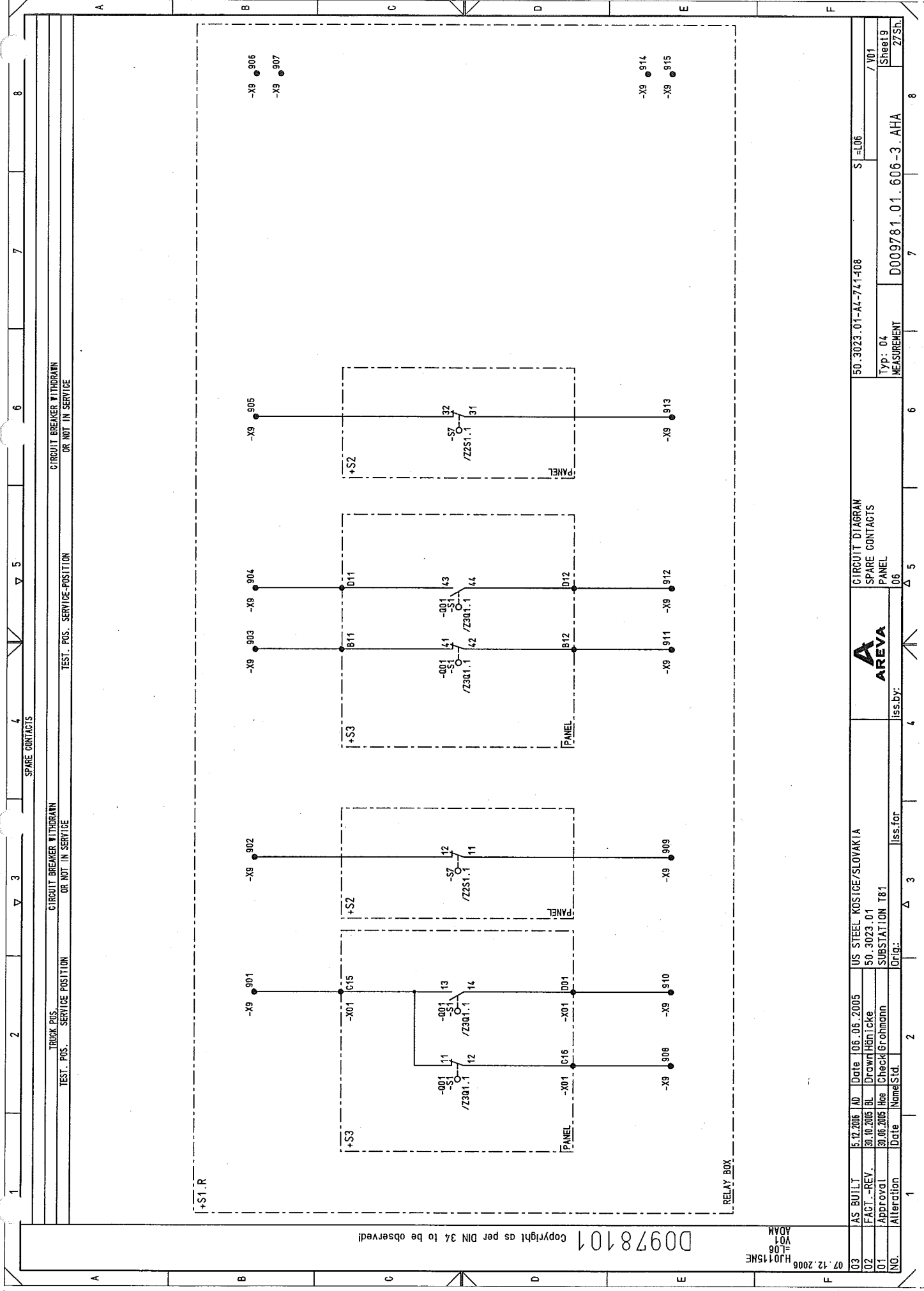
MEASUREMENT



Copyright as per DIN 34 to be observed!

HJ0115ME
=L06
T01
ADAM

003	AS BUILT	5.12.2005	AD	106.06.2005	US STEEL KOSICE/SLOVAKIA	 AREVA	CIRCUIT DIAGRAM VOLTAGE TRANSF.	50_3023_01-A4-741-408	S=L06	/ T01	Sheet 8 27Sh.
001	FACT.-REV.	30.10.2005	BL	Drawn Hnclike	50_3023_01						
002	Approval	30.06.2005	Hne	Check Gromann	SUBSTATION T81						
NO.	Alteration	Date	Name/Std.	Orig.	Iss. for						

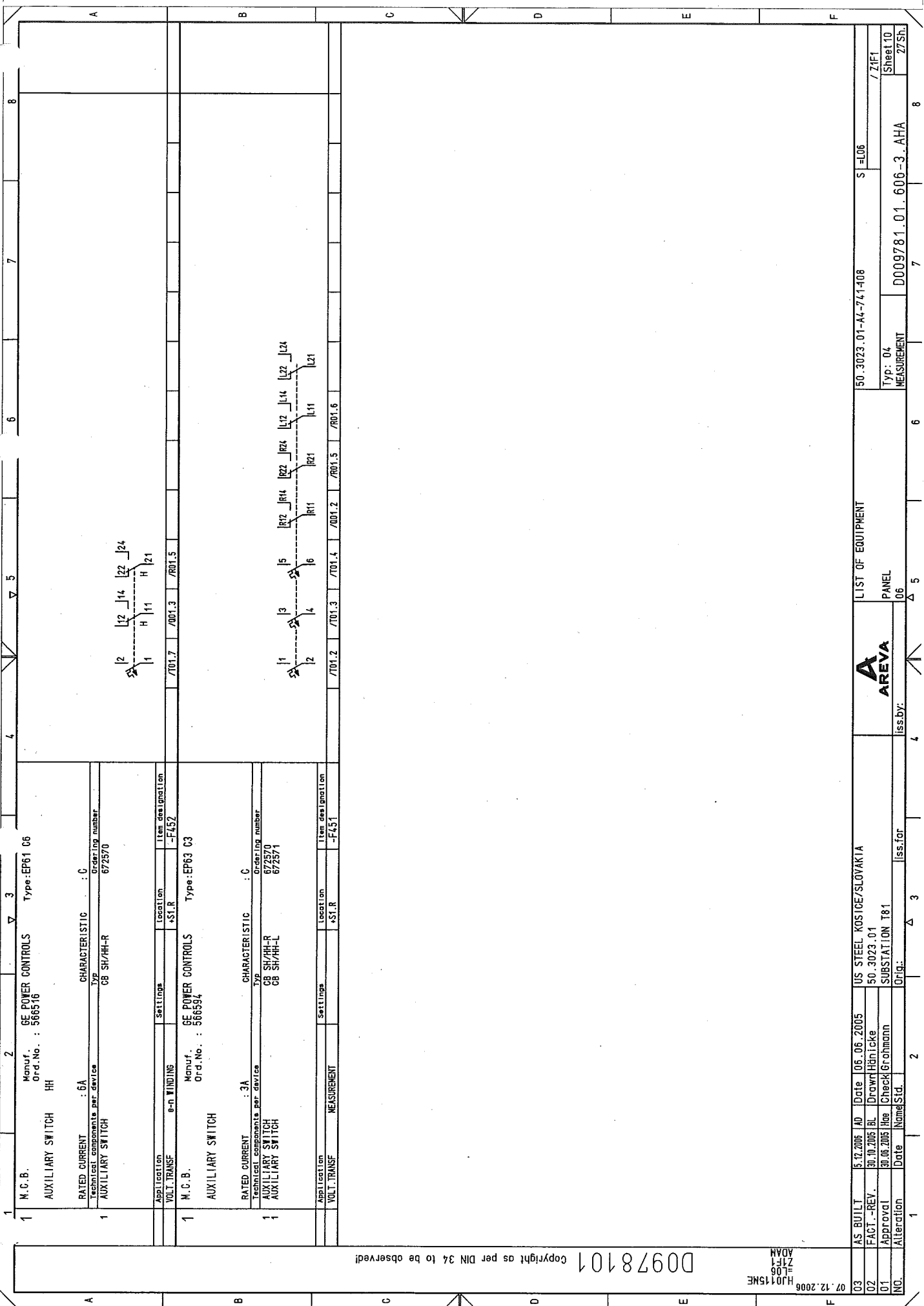


Copyright as per DIN 34 to be observed!

D00978101

07.12.2006
HJ0115NE
L06
V01
ADM

03	AS BUILT	5.12.2005	AD	Date	05.06.2005	US STEEL KOSTICE/SLOVAKIA	50.3023.01	50.3023.01-44-741-408	S=L06	/ V01
02	FACT.-REV.	30.10.2005	BL	Drawn	Hänelcke	50.3023.01				
01	Approval	30.06.2005	Hae	Check	Grohmann	SUBSTATION T81				
NO.	Alteration	Date	Name	Std.	Iss. for	Iss. by:	Orig.	MEASUREMENT	D009781.01.606-3.AHA	Sheet 9 of 27



03	AS BUILT	5.12.2005	AD	Date	06.06.2005	US STEEL KOSTICE/SLOVAKIA	LIST OF EQUIPMENT	50.3023.01-44-741-408	S=L06	/ ZIF1
02	FACT.-REV.	30.10.2005	BL	Drawn	Hänicke	50.3023.01				
01	Approval	30.06.2005	Hae	Checked	Grohmann	SUBSTATION T81	PANEL			
NO.	Alteration	Date	Name	Std.	Orig.	Iss.for	iss.by:	MEASUREMENT	D009781.01.606-3.AHA	Sheet 10
							06			27Sh.

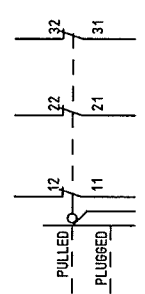
Copyright as per DIN 34 to be observed!

07.12.2006
HJ0115ME
ZIF1
L06
ADAM

A circuit diagram showing a battery on the left connected to two parallel branches on the right. Each branch contains a resistor. The top branch is labeled '2' and the bottom branch is labeled '3'.

07.12.2006
H2015ME
L06
ZZS1
ADAM

D0978101 Copyright as per DIN 34 to be observed!

1	2	3	4	5	6	7	8	
1	DESCRIPTION, DESIGN, TECHNICAL DATA APPLICATION		MANUFACTURER, TYPE, ORDERING DATA SETTINGS MOUNTING APPA. DESIG.		APPARATUS SYMBOL DIAGRAM REFERENCE TO INDIVIDUAL TREATMENT (CIRCUIT DIAGRAM, SHEET NO., CIRCUIT NO.)			WITH REFERENCES TO DETAILS (CIRCUIT DIAGRAM, SHEET NO., CIRCUIT NO.)
1	AUXILIARY SWITCH PLUG PULLED		Manuf. : ALSTOM Ord. No. : Type: : Technical components per device : Type : Ordering number :					REMARK
Application PLUG PULLED		Settings	Location +S2	Item designation -S7	/701.3 /701.5 /701.6			

03	AS BUILT	5.12.2006	AD	Date	06.06.2005	US STEEL KOSTICE/SLOVAKIA	LIST OF EQUIPMENT	50.3023.01-44-741-408	S=L06	/ZZS1
02	FACT.-REV.	30.10.2005	AL	Date	06.06.2005	50.3023.01	PANEL			
01	Approval	30.06.2005	Hoe	Check	Gröbmann	SUBSTATION T81	06	MEASUREMENT	Typ: 04	Sheet 14
NO.	Alteration	Date	Name	Std.	Orig.	Iss. for	Iss. by:	D009781.01.606-3.AHA		27Sh.

03	AS BUILT	5.12.2005	AN	Date	06.06.2005	US STEEL KOSICE/SLOVAKIA		LIST OF EQUIPMENT		50_3023_01-44-741408		S = L06
01	FACT. - REV.	30.10.2005	BL	Drawn	Hahn	50_3023_01		PANEL		Type: 04		Sheet 15
02	Approval	30.10.2005	Hag	Check	Grohmann	SUBSTATION T81		PANEL		MEASUREMENT		27St.
NO.	Alteration	Date	Name	Sid.	Orig.	iss. for	iss. by:					

**A
AREVA**

1		2		3		4		5		6		7		8	
NO. / CABLE		WIRES USED SHEET STATE		CABLE-TYPE SECTION		CORES		-ROUTE		CIRCUIT DIAGRAM		CABLE MATERIAL		TERM. TYPE	
												H07V-K 1.5MM2 SW H07V-K 2.5MM2 SW		STANDARD: UK5N	

AREVA

1	2	3	4	5	6	7	8			
CABLE	WIRES USED	SHEET/STATE	CABLE-TYPE SECTION	CORES	-ROUTE	CIRCUIT DIAGRAM	CABLE MATERIAL			
Ø	COLOR	TERM. TYPE	STANDARD:	H07V-K	1.5MM2	SW	H07V-K			
POS.:	2	H07V-K	2.5MM2	SW	SW	SW	SW			
-X6										
RÜCK-REF.	NO	CORES/LINE	DESTINAT. DESIG.	EXTERNAL	POT	NO	DESTINAT. DESIG.	INTERNAL	CORES/LINE	REMARK
/T01.2	1	2	=L04	+S1.R -X6	603	L1	-F451	2		
/T01.3	2	=L07	+S1.R -X6	601	L1	-F451	17	Q		
/T01.8	3	=L04	+S1.R -X6	606	L2	-F451	4			
/T01.2	4	=L07	+S1.R -X6	604	L2	-F451	18	Q		
/T01.3	5	=L04	+S1.R -X6	605	L3	-F451	6			
/T01.8	6	=L07	+S1.R -X6	609	L3	-F452	18	Q		
/T01.2	7	=L04	+S1.R -X6	607	L3	-X01	A07	2		
/T01.3	8	=L07	+S1.R -X6	612	N					
/T01.8	9	=L04	+S1.R -X6	610	N					
/T01.2	10	=L07	+S1.R -X6	613	N					
/T01.3	11	=L04	+S1.R -X6	615	e	-F452	2			
/T01.8	12	=L07	+S1.R -X6	616	e	-R452	2			
/T01.2	13	=L04	+S1.R -X6	617	n	-X01	C01	2		
/T01.3	14	=L07	+S1.R -X6	618	n	-R452	1			
/T01.8	15	=L04	+S1.R -X6		n					

03 AS BUILT 5.12.2005 AD Date 06.06.2005 US STEEL KOSICE/SLOVAKIA

02 FACT.-REV. 30.10.2005 BL Drawn Hanička 50.3023.01

01 Approval 30.06.2005 Hne Check Grohmann SUBSTATION T81

NO Alteration Date Name Std. Orig. Iss. for Iss. by: PANEL 06

03 AS BUILT 5.12.2005 AD Date 06.06.2005 US STEEL KOSICE/SLOVAKIA

02 FACT.-REV. 30.10.2005 BL Drawn Hanička 50.3023.01

01 Approval 30.06.2005 Hne Check Grohmann SUBSTATION T81

NO Alteration Date Name Std. Orig. Iss. for Iss. by: PANEL 06

03 AS BUILT 5.12.2005 AD Date 06.06.2005 US STEEL KOSICE/SLOVAKIA

02 FACT.-REV. 30.10.2005 BL Drawn Hanička 50.3023.01

01 Approval 30.06.2005 Hne Check Grohmann SUBSTATION T81

NO Alteration Date Name Std. Orig. Iss. for Iss. by: PANEL 06

03 AS BUILT 5.12.2005 AD Date 06.06.2005 US STEEL KOSICE/SLOVAKIA

02 FACT.-REV. 30.10.2005 BL Drawn Hanička 50.3023.01

01 Approval 30.06.2005 Hne Check Grohmann SUBSTATION T81

NO Alteration Date Name Std. Orig. Iss. for Iss. by: PANEL 06

03 AS BUILT 5.12.2005 AD Date 06.06.2005 US STEEL KOSICE/SLOVAKIA

02 FACT.-REV. 30.10.2005 BL Drawn Hanička 50.3023.01

01 Approval 30.06.2005 Hne Check Grohmann SUBSTATION T81

NO Alteration Date Name Std. Orig. Iss. for Iss. by: PANEL 06

03 AS BUILT 5.12.2005 AD Date 06.06.2005 US STEEL KOSICE/SLOVAKIA

02 FACT.-REV. 30.10.2005 BL Drawn Hanička 50.3023.01

01 Approval 30.06.2005 Hne Check Grohmann SUBSTATION T81

NO Alteration Date Name Std. Orig. Iss. for Iss. by: PANEL 06

03 AS BUILT 5.12.2005 AD Date 06.06.2005 US STEEL KOSICE/SLOVAKIA

02 FACT.-REV. 30.10.2005 BL Drawn Hanička 50.3023.01

01 Approval 30.06.2005 Hne Check Grohmann SUBSTATION T81

NO Alteration Date Name Std. Orig. Iss. for Iss. by: PANEL 06

03 AS BUILT 5.12.2005 AD Date 06.06.2005 US STEEL KOSICE/SLOVAKIA

02 FACT.-REV. 30.10.2005 BL Drawn Hanička 50.3023.01

01 Approval 30.06.2005 Hne Check Grohmann SUBSTATION T81

NO Alteration Date Name Std. Orig. Iss. for Iss. by: PANEL 06

03 AS BUILT 5.12.2005 AD Date 06.06.2005 US STEEL KOSICE/SLOVAKIA

02 FACT.-REV. 30.10.2005 BL Drawn Hanička 50.3023.01

01 Approval 30.06.2005 Hne Check Grohmann SUBSTATION T81

NO Alteration Date Name Std. Orig. Iss. for Iss. by: PANEL 06

03 AS BUILT 5.12.2005 AD Date 06.06.2005 US STEEL KOSICE/SLOVAKIA

02 FACT.-REV. 30.10.2005 BL Drawn Hanička 50.3023.01

01 Approval 30.06.2005 Hne Check Grohmann SUBSTATION T81

NO Alteration Date Name Std. Orig. Iss. for Iss. by: PANEL 06

03 AS BUILT 5.12.2005 AD Date 06.06.2005 US STEEL KOSICE/SLOVAKIA

02 FACT.-REV. 30.10.2005 BL Drawn Hanička 50.3023.01

01 Approval 30.06.2005 Hne Check Grohmann SUBSTATION T81

NO Alteration Date Name Std. Orig. Iss. for Iss. by: PANEL 06

03 AS BUILT 5.12.2005 AD Date 06.06.2005 US STEEL KOSICE/SLOVAKIA

02 FACT.-REV. 30.10.2005 BL Drawn Hanička 50.3023.01

01 Approval 30.06.2005 Hne Check Grohmann SUBSTATION T81

NO Alteration Date Name Std. Orig. Iss. for Iss. by: PANEL 06

03 AS BUILT 5.12.2005 AD Date 06.06.2005 US STEEL KOSICE/SLOVAKIA

02 FACT.-REV. 30.10.2005 BL Drawn Hanička 50.3023.01

01 Approval 30.06.2005 Hne Check Grohmann SUBSTATION T81

NO Alteration Date Name Std. Orig. Iss. for Iss. by: PANEL 06

03 AS BUILT 5.12.2005 AD Date 06.06.2005 US STEEL KOSICE/SLOVAKIA

02 FACT.-REV. 30.10.2005 BL Drawn Hanička 50.3023.01

01 Approval 30.06.2005 Hne Check Grohmann SUBSTATION T81

NO Alteration Date Name Std. Orig. Iss. for Iss. by: PANEL 06

03 AS BUILT 5.12.2005 AD Date 06.06.2005 US STEEL KOSICE/SLOVAKIA

02 FACT.-REV. 30.10.2005 BL Drawn Hanička 50.3023.01

01 Approval 30.06.2005 Hne Check Grohmann SUBSTATION T81

NO Alteration Date Name Std. Orig. Iss. for Iss. by: PANEL 06

03 AS BUILT 5.12.2005 AD Date 06.06.2005 US STEEL KOSICE/SLOVAKIA

02 FACT.-REV. 30.10.2005 BL Drawn Hanička 50.3023.01

01 Approval 30.06.2005 Hne Check Grohmann SUBSTATION T81

NO Alteration Date Name Std. Orig. Iss. for Iss. by: PANEL 06

03 AS BUILT 5.12.2005 AD Date 06.06.2005 US STEEL KOSICE/SLOVAKIA

02 FACT.-REV. 30.10.2005 BL Drawn Hanička 50.3023.01

01 Approval 30.06.2005 Hne Check Grohmann SUBSTATION T81

NO Alteration Date Name Std. Orig. Iss. for Iss. by: PANEL 06

03 AS BUILT 5.12.2005 AD Date 06.06.2005 US STEEL KOSICE/SLOVAKIA

02 FACT.-REV. 30.10.2005 BL Drawn Hanička 50.3023.01

01 Approval 30.06.2005 Hne Check Grohmann SUBSTATION T81

NO Alteration Date Name Std. Orig. Iss. for Iss. by: PANEL 06

03 AS BUILT 5.12.2005 AD Date 06.06.2005 US STEEL KOSICE/SLOVAKIA

02 FACT.-REV. 30.10.2005 BL Drawn Hanička 50.3023.01

01 Approval 30.06.2005 Hne Check Grohmann SUBSTATION T81

NO Alteration Date Name Std. Orig. Iss. for Iss. by: PANEL 06

03 AS BUILT 5.12.2005 AD Date 06.06.2005 US STEEL KOSICE/SLOVAKIA

02 FACT.-REV. 30.10.2005 BL Drawn Hanička 50.3023.01

01 Approval 30.06.2005 Hne Check Grohmann SUBSTATION T81

NO Alteration Date Name Std. Orig. Iss. for Iss. by: PANEL 06

03 AS BUILT 5.12.2005 AD Date 06.06.2005 US STEEL KOSICE/SLOVAKIA

02 FACT.-REV. 30.10.2005 BL Drawn Hanička 50.3023.01

01 Approval 30.06.2005 Hne Check Grohmann SUBSTATION T81

NO Alteration Date Name Std. Orig. Iss. for Iss. by: PANEL 06

03 AS BUILT 5.12.2005 AD Date 06.06.2005 US STEEL KOSICE/SLOVAKIA

02 FACT.-REV. 30.10.2005 BL Drawn Hanička 50.3023.01

01 Approval 30.06.2005 Hne Check Grohmann SUBSTATION T81

NO Alteration Date Name Std. Orig. Iss. for Iss. by: PANEL 06

03 AS BUILT 5.12.2005 AD Date 06.06.2005 US STEEL KOSICE/SLOVAKIA

02 FACT.-REV. 30.10.2005 BL Drawn Hanička 50.3023.01

01 Approval 30.06.2005 Hne Check Grohmann SUBSTATION T81

NO Alteration Date Name Std. Orig. Iss. for Iss. by: PANEL 06

03 AS BUILT 5.12.2005 AD Date 06.06.2005 US STEEL KOSICE/SLOVAKIA

02 FACT.-REV. 30.10.2005 BL Drawn Hanička 50.3023.01

01 Approval 30.06.2005 Hne Check Grohmann SUBSTATION T81

NO Alteration Date Name Std. Orig. Iss. for Iss. by: PANEL 06

03 AS BUILT 5.12.2005 AD Date 06.06.2005 US STEEL KOSICE/SLOVAKIA

02 FACT.-REV. 30.10.2005 BL Drawn Hanička 50.3023.01

01 Approval 30.06.2005 Hne Check Grohmann SUBSTATION T81

NO Alteration Date Name Std. Orig. Iss. for Iss. by: PANEL 06

03 AS BUILT 5.12.2005 AD Date 06.06.2005 US STEEL KOSICE/SLOVAKIA

02 FACT.-REV. 30.10.2005 BL Drawn Hanička 50.3023.01

01 Approval 30.06.2005 Hne Check Grohmann SUBSTATION T81

NO Alteration Date Name Std. Orig. Iss. for Iss. by: PANEL 06

03 AS BUILT 5.12.2005 AD Date 06.06.2005 US STEEL KOSICE/SLOVAKIA

02 FACT.-REV. 30.10.2005 BL Drawn Hanička 50.3023.01

01 Approval 30.06.2005 Hne Check Grohmann SUBSTATION T81

NO Alteration Date Name Std. Orig. Iss. for Iss. by: PANEL 06

03 AS BUILT 5.12.2005 AD Date 06.06.2005 US STEEL KOSICE/SLOVAKIA

02 FACT.-REV. 30.10.2005 BL Drawn Hanička 50.3023.01

01 Approval 30.06.2005 Hne Check Grohmann SUBSTATION T81

NO Alteration Date Name Std. Orig. Iss. for Iss. by: PANEL 06

03 AS BUILT 5.12.2005 AD Date 06.06.2005 US STEEL KOSICE/SLOVAKIA

02 FACT.-REV. 30.10.2005 BL Drawn Hanička 50.3023.01

01 Approval 30.06.2005 Hne Check Grohmann SUBSTATION T81

NO Alteration Date Name Std. Orig. Iss. for Iss. by: PANEL 06

03 AS BUILT 5.12.2005 AD Date 06.06.2005 US STEEL KOSICE/SLOVAKIA

02 FACT.-REV. 30.10.2005 BL Drawn Hanička 50.3023.01

01 Approval 30.06.2005 Hne Check Grohmann SUBSTATION T81

NO Alteration Date Name Std. Orig. Iss. for Iss. by: PANEL 06

03 AS BUILT 5.12.2005 AD Date 06.06.2005 US STEEL KOSICE/SLOVAKIA

02 FACT.-REV. 30.10.2005 BL Drawn Hanička 50.3023.01

01 Approval 30.06.2005 Hne Check Grohmann SUBSTATION T81

NO Alteration Date Name Std. Orig. Iss. for Iss. by: PANEL 06

03 AS BUILT 5.12.2005 AD Date 06.06.2005 US STEEL KOSICE/SLOVAKIA

02 FACT.-REV. 30.10.2005 BL Drawn Hanička 50.3023.01

01 Approval 30.06.2005 Hne Check Grohmann SUBSTATION T81

NO Alteration Date Name Std. Orig. Iss. for Iss. by: PANEL 06

03 AS BUILT 5.12.2005 AD Date 06.06.2005 US STEEL KOSICE/SLOVAKIA

02 FACT.-REV. 30.10.2005 BL Drawn Hanička 50.3023.01

01 Approval 30.06.2005 Hne Check Grohmann SUBSTATION T81

NO Alteration Date Name Std. Orig. Iss. for Iss. by: PANEL 06

03 AS BUILT 5.12.2005 AD Date 06.06.2005 US STEEL KOSICE/SLOVAKIA

02 FACT.-REV. 30.10.2005 BL Drawn Hanička 50.3023.01

01 Approval 30.06.2005 Hne Check Grohmann SUBSTATION T81

NO Alteration Date Name Std. Orig. Iss. for Iss. by: PANEL 06

03 AS BUILT 5.12.2005 AD Date 06.06.2005 US STEEL KOSICE/SLOVAKIA

02 FACT.-REV. 30.10.2005 BL Drawn Hanička 50.3023.01

01 Approval 30.06.2005 Hne Check Grohmann SUBSTATION T81

NO Alteration Date Name Std. Orig. Iss. for Iss. by: PANEL 06

03 AS BUILT 5.12.2005 AD Date 06.06.2005 US STEEL KOSICE/SLOVAKIA

02 FACT.-REV. 30.10.2005 BL Drawn Hanička 50.3023.01

01 Approval 30.06.2005 Hne Check Grohmann SUBSTATION T81

NO Alteration Date Name Std. Orig. Iss. for Iss. by: PANEL 06

03 AS BUILT 5.12.2005 AD Date 06.06.2005 US STEEL KOSICE/SLOVAKIA

02 FACT.-REV. 30.10.2005 BL Drawn Hanička 50.3023.01

01 Approval 30.06.2005 Hne Check Grohmann SUBSTATION T81

NO Alteration Date Name Std. Orig. Iss. for Iss. by: PANEL 06

03 AS BUILT 5.12.2005 AD Date 06.06.2005 US STEEL KOSICE/SLOVAKIA

02 FACT.-REV. 30.10.2005 BL Drawn Hanička 50.3023.01

01 Approval 30.06.2005 Hne Check Grohmann SUBSTATION T81

NO Alteration Date Name Std. Orig. Iss. for Iss. by: PANEL 06

03 AS BUILT 5.12.2005 AD Date 06.06.2005 US STEEL KOSICE/SLOVAKIA

02 FACT.-REV. 30.10.2005 BL Drawn Hanička 50.3023.01

01 Approval 30.06.2005 Hne Check Grohmann SUBSTATION T81

NO Alteration Date Name Std. Orig. Iss. for Iss. by: PANEL 06

03 AS BUILT 5.12.2005 AD Date 06.06.2005 US STEEL KOSICE/SLOVAKIA

02 FACT.-REV. 30.10.2005 BL Drawn Hanička 50.3023.01

01 Approval 30.06.2005 Hne Check Grohmann SUBSTATION T81

NO Alteration Date Name Std. Orig. Iss. for Iss. by: PANEL 06

03 AS BUILT 5.12.2005 AD Date 06.06.2005 US STEEL KOSICE/SLOVAKIA

02 FACT.-REV. 30.10.2005 BL Drawn Hanička 50.3023.01

01 Approval 30.06.2005 Hne Check Grohmann SUBSTATION T81

NO Alteration Date Name Std. Orig. Iss. for Iss. by: PANEL 06

03 AS BUILT 5.12.2005 AD Date 06.06.2005 US STEEL KOSICE/SLOVAKIA

02 FACT.-REV. 30.10.2005 BL Drawn Hanička 50.3023.01

01 Approval 30.06.2005 Hne Check Grohmann SUBSTATION T81

NO Alteration Date Name Std. Orig. Iss. for Iss. by: PANEL 06

03 AS BUILT 5.12.2005 AD Date 06.06.2005 US STEEL KOSICE/SLOVAKIA

02 FACT.-REV. 30.10.2005 BL Drawn Hanička 50.3023.01

01 Approval 30.06.2005 Hne Check Grohmann SUBSTATION T81

NO Alteration Date Name Std. Orig. Iss. for Iss. by: PANEL 06

03 AS BUILT 5.12.2005 AD Date 06.06.2005 US STEEL KOSICE/SLOVAKIA

02 FACT.-REV. 30.10.2005 BL Drawn Hanička 50.3023.01

01 Approval 30.06.2005 Hne Check Grohmann SUBSTATION T81

NO Alteration Date Name Std. Orig. Iss. for Iss. by: PANEL 06

03 AS BUILT 5.12.2005 AD Date 06.06.2005 US STEEL KOSICE/SLOVAKIA

02 FACT.-REV. 30.10.2005 BL Drawn Hanička 50.3023.01

01 Approval 30.06.2005 Hne Check Grohmann SUBSTATION T81

NO Alteration Date Name Std. Orig. Iss. for Iss. by: PANEL 06

03 AS BUILT 5.12.2005 AD Date 06.06.2005 US STEEL KOSICE/SLOVAKIA

02 FACT.-REV. 30.10.2005 BL Drawn Hanička 50.3023.01

01 Approval 30.06.2005 Hne Check Grohmann SUBSTATION T81

NO Alteration Date Name Std. Orig. Iss. for Iss. by: PANEL 06

03 AS BUILT 5.12.2005 AD Date 06.06.2005 US STEEL KOSICE/SLOVAKIA

02 FACT.-REV. 30.10.2005 BL Drawn Hanička 50.3023.01

01 Approval 30.06.2005 Hne Check Grohmann SUBSTATION T81

NO Alteration Date Name Std. Orig. Iss. for Iss. by: PANEL 06

03 AS BUILT 5.12.2005 AD Date 06.06.2005 US STEEL KOSICE/SLOVAKIA

02 FACT.-REV. 30.10.2005 BL Drawn Hanička 50.3023.01

01 Approval 30.06.2005 Hne Check Grohmann SUBSTATION T81

NO Alteration Date Name Std. Orig. Iss. for Iss. by: PANEL 06

03 AS BUILT 5.12.2005 AD Date 06.06.2005 US STEEL KOSICE/SLOVAKIA

02 FACT.-REV. 30.10.2005 BL Drawn Hanička 50.3023.01

01 Approval 30.06.2005 Hne Check Grohmann SUBSTATION T81

NO Alteration Date Name Std. Orig. Iss. for Iss. by: PANEL 06

03 AS BUILT 5.12.2005 AD Date 06.06.2005 US STEEL KOSICE/SLOVAKIA

02 FACT.-REV. 30.10.2005 BL Drawn Hanička 50.3023.01

01 Approval 30.06.2005 Hne Check Grohmann SUBSTATION T81

NO Alteration Date Name Std. Orig. Iss. for Iss. by: PANEL 06

03 AS BUILT 5.12.2005 AD Date 06.06.2005 US STEEL KOSICE/SLOVAKIA

02 FACT.-REV. 30.10.2005 BL Drawn Hanička 50.3023.01

01 Approval 30.06.2005 Hne Check Grohmann SUBSTATION T81

NO Alteration Date Name Std. Orig. Iss. for Iss. by: PANEL 06

03 AS BUILT 5.12.2005 AD Date 06.06.2005 US STEEL KOSICE/SLOVAKIA

02 FACT.-REV. 30.10.2005 BL Drawn Hanička 50.3023.01

01 Approval 30.06.2005 Hne Check Grohmann SUBSTATION T81

NO Alteration Date Name Std. Orig. Iss. for Iss. by: PANEL 06

03 AS BUILT 5.12.2005 AD Date 06.06.2005 US STEEL KOSICE/SLOVAKIA

02 FACT.-REV. 30.10.2005 BL Drawn Hanička 50.3023.01

01 Approval 30.06.2005 Hne Check Grohmann SUBSTATION T81

NO Alteration Date Name Std. Orig. Iss. for Iss. by: PANEL 06

03 AS BUILT 5.12.2005 AD Date 06.06.2005 US STEEL KOSICE/SLOVAKIA

02 FACT.-REV. 30.10.2005 BL Drawn Hanička 50.3023.01

01 Approval 30.06.2005 Hne Check Grohmann SUBSTATION T81

NO Alteration Date Name Std. Orig. Iss. for Iss. by: PANEL 06

03 AS BUILT 5.12.2005 AD Date 06.06.2005 US STEEL KOSICE/SLOVAKIA

02 FACT.-REV. 30.10.2005 BL Drawn Hanička 50.3023.01

01 Approval 30.06.2005 Hne Check Grohmann SUBSTATION T81

NO Alteration Date Name Std. Orig. Iss. for Iss. by: PANEL 06

03 AS BUILT 5.12.2005 AD Date 06.06.2005 US STEEL KOSICE/SLOVAKIA

02 FACT.-REV. 30.10.2005 BL Drawn Hanička 50.3023.01

01 Approval 30.06.2005 Hne Check Grohmann SUBSTATION T81

NO Alteration Date Name Std. Orig. Iss. for Iss. by: PANEL 06

03 AS BUILT 5.12.2005 AD Date 06.06.2005 US STEEL KOSICE/SLOVAKIA

02 FACT.-REV. 30.10.2005 BL Drawn Hanička 50.3023.01

01 Approval 30.06.2005 Hne Check Grohmann SUBSTATION T81

NO Alteration Date Name Std. Orig. Iss. for Iss. by: PANEL 06

03 AS BUILT 5.12.2005 AD Date 06.06.2005 US STEEL KOSICE/SLOVAKIA

02 FACT.-REV. 30.10.2005 BL Drawn Hanička 50.3023.01

01 Approval 30.06.2005 Hne Check Grohmann SUBSTATION T81

NO Alteration Date Name Std. Orig. Iss. for Iss. by: PANEL 06

03 AS BUILT 5.12.2005 AD Date 06.06.2005 US STEEL KOSICE/SLOVAKIA

02 FACT.-REV. 30.10.2005 BL Drawn Hanička 50.3023.01

01 Approval 30.06.2005 Hne Check Grohmann SUBSTATION T81

NO Alteration Date Name Std. Orig. Iss. for Iss. by: PANEL 06

03 AS BUILT 5.12.2005 AD Date 06.06.2005 US STEEL KOSICE/SLOVAKIA

02 FACT.-REV. 30.10.2005 BL Drawn Hanička 50.3023.01

01 Approval 30.06.2005 Hne Check Grohmann SUBSTATION T81

NO Alteration Date Name Std. Orig. Iss. for Iss. by: PANEL 06

03 AS BUILT 5.12.2005 AD Date 06.06.2005 US STEEL KOSICE/SLOVAKIA

02 FACT.-REV. 30.10.2005 BL Drawn Hanička 50.3023.01

01 Approval 30.06.2005 Hne Check Grohmann SUBSTATION T81

NO Alteration Date Name Std. Orig. Iss. for Iss. by: PANEL 06

03 AS BUILT 5.12.2005 AD Date 06.06.2005 US STEEL KOSICE/SLOVAKIA

02 FACT.-REV. 30.10.2005 BL Drawn Hanička 50.3023.01

01 Approval 30.06.2005 Hne Check Grohmann SUBSTATION T81

NO Alteration Date Name Std. Orig. Iss. for Iss. by: PANEL 06

03 AS BUILT 5.12.2005 AD Date 06.06.2005 US STEEL KOSICE/SLOVAKIA

02 FACT.-REV. 30.10.2005 BL Drawn Hanička 50.3023.01

01 Approval 30.06.2005 Hne Check Grohmann SUBSTATION T81

NO Alteration Date Name Std. Orig. Iss. for Iss. by: PANEL 06

03 AS BUILT 5.12.2005 AD Date 06.06.2005 US STEEL KOSICE/SLOVAKIA

02 FACT.-REV. 30.10.2005 BL Drawn Hanička 50.3023.01

01 Approval 30.06.2005 Hne Check Grohmann SUBSTATION T81

NO Alteration Date Name Std. Orig. Iss. for Iss. by: PANEL 06

03 AS BUILT 5.12.2005 AD Date 06.06.2005 US STEEL KOSICE/SLOVAKIA

02 FACT.-REV. 30.10.2005 BL Drawn Hanička 50.3023.01

01 Approval 30.06.2005 Hne Check Grohmann SUBSTATION T81

NO Alteration Date Name Std. Orig. Iss. for Iss. by: PANEL 06

03 AS BUILT 5.12.2005 AD Date 06.06.2005 US STEEL KOSICE/SLOVAKIA

02 FACT.-REV. 30.10.2005 BL Drawn Hanička 50.3023.01

01 Approval 30.06.2005 Hne Check Grohmann SUBSTATION T81

NO Alteration Date Name Std. Orig. Iss. for Iss. by: PANEL 06

03 AS BUILT 5.12.2005 AD Date 06.06.2005 US STEEL KOSICE/SLOVAKIA

02 FACT.-REV. 30.10.2005 BL Drawn Hanička 50.3023.01

01 Approval 30.06.2005 Hne Check Grohmann SUBSTATION T81

NO Alteration Date Name Std. Orig. Iss. for Iss. by: PANEL 06

03 AS BUILT 5.12.2005 AD Date 06.06.2005 US STEEL KOSICE/SLOVAKIA

02 FACT.-REV. 30.10.2005 BL Drawn Hanička 50.3023.01

01 Approval 30.06.2005 Hne Check Grohmann SUBSTATION T81

NO Alteration Date Name Std. Orig. Iss. for Iss. by: PANEL 06

03 AS BUILT 5.12.2005 AD Date 06.06.2005 US STEEL KOSICE/SLOVAKIA

02 FACT.-REV. 30.10.2005 BL Drawn Hanička 50.3023.01

01 Approval 30.06.2005 Hne Check Grohmann SUBSTATION T81

NO Alteration Date Name Std. Orig. Iss. for Iss. by: PANEL 06

03 AS BUILT 5.12.2005 AD Date 06.06.2005 US STEEL KOSICE/SLOVAKIA

02 FACT.-REV. 30.10.2005 BL Drawn Hanička 50.3023.01

01 Approval 30.06.2005 Hne Check Grohmann SUBSTATION T81

NO Alteration Date Name Std. Orig. Iss. for Iss. by: PANEL 06

03 AS BUILT 5.12.2005 AD Date 06.06.2005 US STEEL KOSICE/SLOVAKIA

02 FACT.-REV. 30.10.2005 BL Drawn Hanička 50.3023.01

<

1

Copyright as per DIN 34 to be observed!

07.12.2006

03	AS BUILT	15.12.2005	AD	Date	06.06.2005	US STEEL KOSICE/SLOVAKIA	TERMINAL DIAGRAM	50.3023.01-A4-744-408	V	=L06	/K30
02	FACT.-REV.	30.10.2005	BL	Drawn	Hänicke	50.3023.01				+S1.R	
01	Approval	30.06.2005	Hoe	Checked	Grohmann	SUBSTATION T81	PANEL	Typ: 04			Sheet 21
NQ.	Alteration	Date	Name	Std.	Orig.	Iss. for	Iss. by:	MEASUREMENT			27Sh.

1		2		3		4		5		6		7		8	
NU CABLE		WIRES USED SHEET STATE		CABLE-TYPE SECTION		CORES		-ROUTE		CIRCUIT DIAGRAM		CABLE MATERIAL		TERM. TYPE	
												H07V-K 1.5MM2 SW		STANDARD: UK5N	
												0 H05V-K 1.0MM2 SW		POS.: SW	

03	AS BUILT	5.12.2005	10	Date	06.06.2005	US STEEL KOSTICE/SLOVAKIA		TERMINAL DIAGRAM	50.3023.01-A4-741-08	V ±L06 ±S1.R	
02	FACT. - REV.	30.10.2005	BL	Drawn	Hänticke	50.3023.01					
01	Approval	30.05.2005	10a	Check	Grolmann	SUBSTANTI ON T81					
NO.	Alteration	Date	Name	Sid.	Orig.	Iss. for	Iss. by:	06	PANEL	Type: 04 MEASUREMENT	Sheet 22 27 Sh.

CROSS CONNECTION

REFERENCE	POTENTIAL ITEM CR. SECTION	CABLE MATERIAL COLOR	OUTPUT TERMINAL	DESTINATION 1	DESTINATION 2	DESTINATION 3	DESTINATION 4	DESTINATION 5	DESTINATION 6
001	1 1.5MM2	H07V-K SW	-X8	801 -F451	12 -F452	12			
001	1 1.5MM2	H07V-K SW	-X8	802 -F451	11 -F452	11			
R01	1 1.5MM2	H07V-K SW	-X4	413 -F451	22 -F452	22			
R01	1 1.5MM2	H07V-K SW	-X4	415 -F451	21 -F452	21			
T01	L1 2 2.5MM2	H07V-K SW		-X01	A01 -F451	1			
T01	L2 2 2.5MM2	H07V-K SW		-X01	A03 -F451	3			
T01	L3 2 2.5MM2	H07V-K SW		-X01	A05 -F451	5			
T01	e 2 2.5MM2	H07V-K SW		-X01	C03 -F452	1			


03	AS BUILT	15.12.2005	AD	Date	06.06.2005	US STEEL KOSICE/SLOVAKIA		CROSS CONNECT. LIST RELAY BOX PANEL	150.3023.01-A4-741408	V -L06 +S1.R	/ Q10		
02	FACT.-REV.	10.10.2005	BL	Date	50.3023.01								
01	Approval	30.06.2005	Bo	Check	Grohmann								
IND.	Alteration	Date	Named	Std.	Orig.								
Iss. by:										Typ: 04 MEASUREMENT		D009781.01.606-3. AHA	
Iss. for:										06		7	
2										6		8	

D00978101 Copyright as per DIN 34 to be observed!

HJ0115ME
L06+S1
Q10
ADAM

CROSS CONNECTION

[illegible]

03	AS BUILT	5.12.2005	10	Date	06.06.2005	US STEEL KOSICE/SLOVAKIA		CROSS CONNECT. LIST	50_3023_01-A4-741-008	V =L06 +S1.1
	FACT - REV.	30.10.2005	BL	Drawn	Hgnitcke	50_3023_01				
001	Approval	30.06.2005	10a	Check	Grohmann	SUBSTATION T81				
NO.	Alteration	Date	Name	Std.	Orig.	Iss. for	Iss. by:	06	009781_01_606-3_AHA	277sh.

TERMINAL DIA. , 64-POLE , CIRCUIT-BREAKER SOCKET

+S1.R -X01
 CABLE MATERIAL H05V-K 1.0mm2 SW

A				B				C				+				
+	1	-F451 /T01.2	H07V-K	2.5MM2 SW	1				-X6 /T01.6	H07V-K	2.5MM2 SW	616	-X9 /V01.2	D01	910	1
2	A02												D02		802	2
3	A03	-F451 /T01.3	H07V-K	2.5MM2 SW	3					-F452 /T01.7	H07V-K	2.5MM2 SW	1	D03	807	3
4	A04													D04	809	4
5	A05	-F451 /T01.4	H07V-K	2.5MM2 SW	5									D05		5
6	A06													D06		6
7	A07	-X6 /T01.4	H07V-K	2.5MM2 SW	610									D07		7
8	A08													D08		8
9	A09													D09		9
10	A10													D10		10
11	A11							-X9 /V01.4	H05V-K	1.0MM2 SW	903		-X9 /V01.5	D11	904	11
12	A12							-X9 /V01.4	H05V-K	1.0MM2 SW	911		-X9 /V01.5	D12	912	12
13	A13													D13		13
14	A14													D14		14
15	A15								-X9 /V01.2	H05V-K	1.0MM2 SW	901		D15		15
16	A16								-X9 /V01.2	H05V-K	1.0MM2 SW	908		D16		16
+																+

Subject to technical modifications!
 Copyright as per DIN 34 to be observed!

D0978101

H0115ME
 L06+S1
 S01

03	AS BUILT	5.12.2006	AD	Date	106.06.2005	US STEEL KOSICE/SLOVAKIA
02	FACT -REV.	30.10.2005	BL	Drawn	Hänicke	50.3023.01
01	Approval	30.06.2005	He	Checked	Grahamm	SUBSTATION T81
NO.	Alteration	Date	Nome	Std.	Orig.	

AREVA
 CIRCUIT-BREAKER
 PANEL

150.3023.01-A4-741-408

V=L06
 +S1.R

Typ: 04
 MEASUREMENT
 D009781.01.606-3.AHA

Sheet 24
 27Sh

TERMINAL DIA., 64 POLIG, CIRCUIT-BREAKER PIN

+S3 -X01
CABLE MATERIAL H05V-K 1.0mm2 SW

A				B				C				D				+
1	-T15L1 /T01.2	H07V-K	2.5MM2 SW	A1	B01	-T15L1 /T01.6	H07V-K	2.5MM2 SW	DN : 0	001	-001 -S1 /V01.2	14	1			
2					B02					002	-001 -S1 /V01.4	21	2			
3	-T15L2 /T01.3	H07V-K	2.5MM2 SW	A3	B03	-T15L3 /T01.7	H07V-K	2.5MM2 SW	DA :	003	-001 -S1 /V01.4	22	3			
4					B04					004	-001 -S1 /V01.4	24	4			
5	-T15L3 /T01.4	H07V-K	2.5MM2 SW	A5	B05					005			5			
6					B06					006			6			
7	-T15L1 /T01.4	H07V-K	2.5MM2 SW	N : 0	B07					007			7			
8					B08					008			8			
9					B09					009			9			
10					B10					010			10			
11					B11	-001 -S1 /V01.4	41			011	-001 -S1 /V01.5	43	11			
12					B12	-001 -S1 /V01.4	42			012	-001 -S1 /V01.5	44	12			
13					B13					013			13			
14					B14					014			14			
15					B15	-001 -S1 /V01.2	11	0		015			15			
16					B16	-001 -S1 /V01.2	12			016			16			
														+		

Subject to technical modifications!
Copyright as per DIN 34 to be observed!

HJ0115ME
S01-06+S3
ADAM

03	AS BUILT	5.12.2006	AD	Date	06.06.2005	US STEEL KOSICE/SLOVAKIA	PLUG DIAGRAM	50.3023.01-A4-741408	V L06	/ S01
02	FACT.-REV.	30.10.2005	BL	Drawn	Haniacke	50.3023.01	CIRCUIT-BREAKER		+S3	
01	Approval	30.06.2005	Hie	Check	Grohmann	SUBSTATION T81	PANEL	Typ: 04		Sheet 27
NO.	Alteration	Date	Name/Std.	Iss.for	Iss.by:	Orig:	06	MEASUREMENT	D009781.01.606-3_AHA	27 Sh.