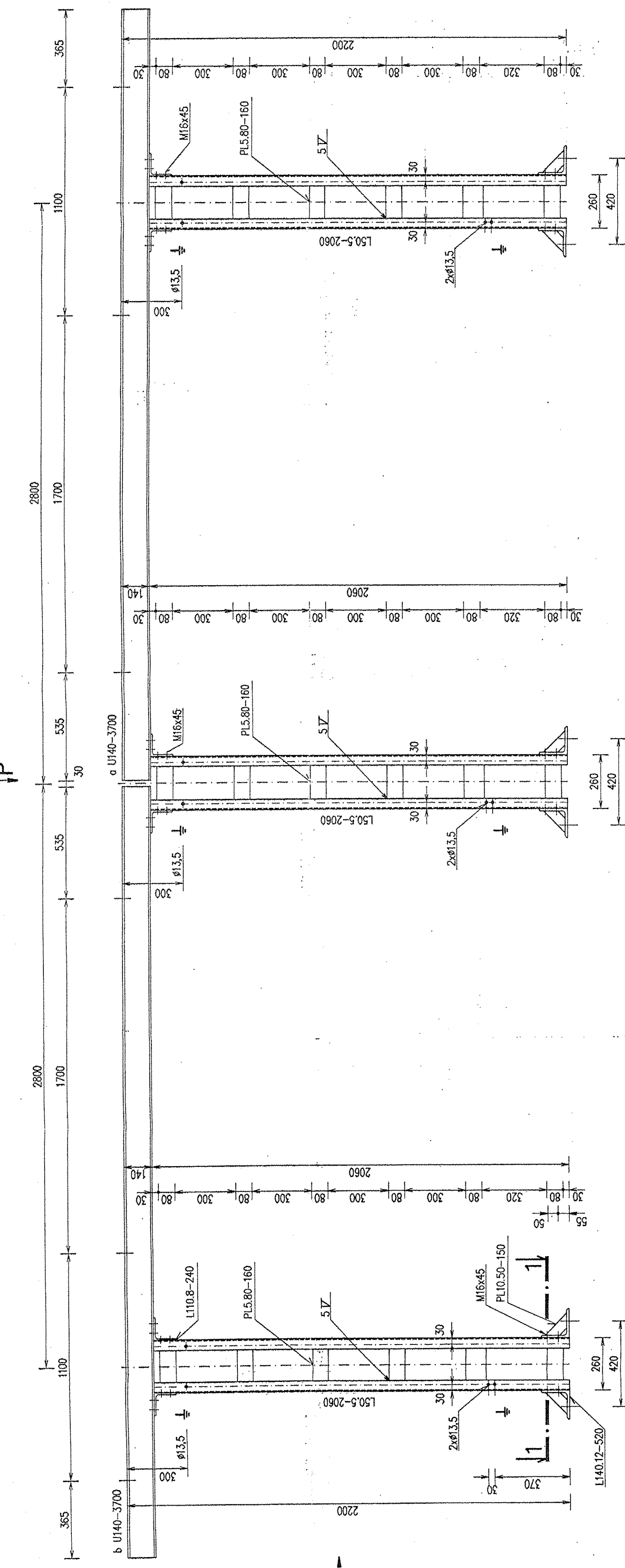
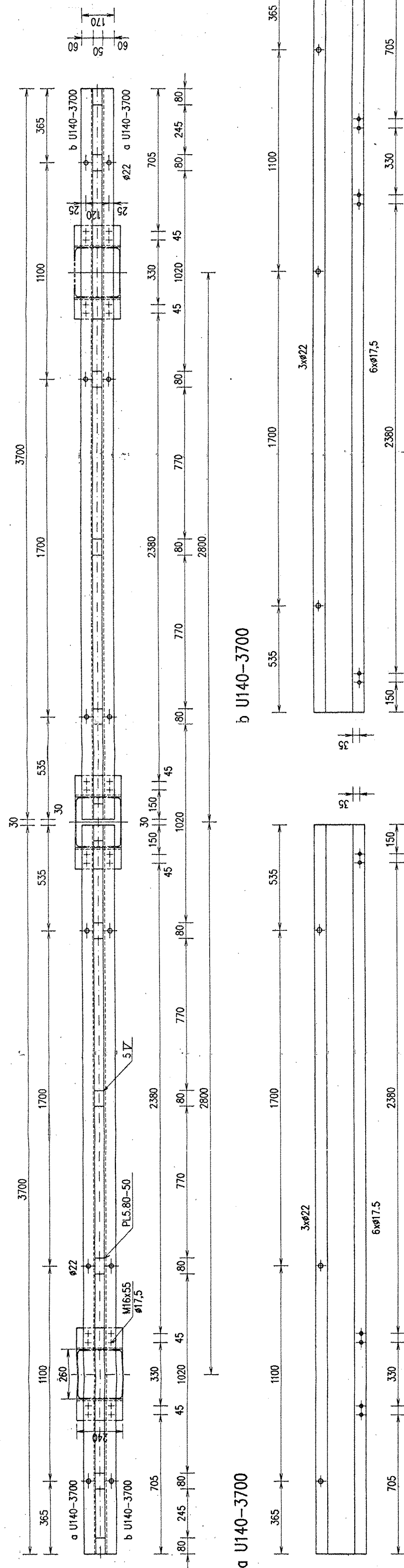


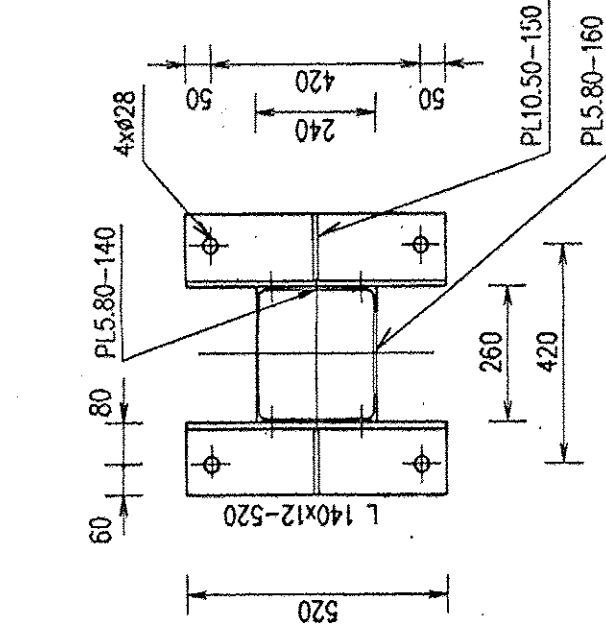
## POHĽAD S/VIEW S



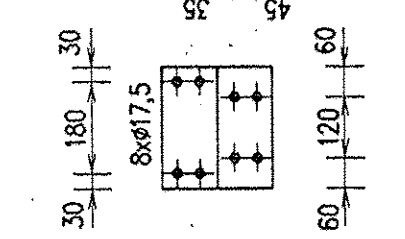
## POHĽAD P/VIEW P



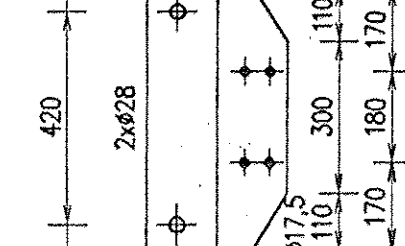
REZ 1-1/SECTION 1-1



## L110.8-240



## L140.12-520



**POZNÁMKA:**

CELÚ KONŠTRUKCIU ZINKOVAŤ!  
KONŠTRUKCIA JE NAVRHNUTÁ V ZMYSE NORMY STN 73 1401  
VYROBNÁ SKUPINA B PODĽA NORMY STN 73 2601

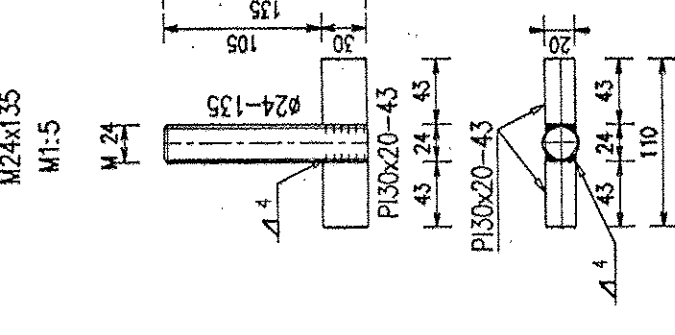
## REMARKS:

THE WHOLE SUPPORT IS HOT DIP GALVANIZED  
COMPLIES WITH THE STANDARD STN 73 1401  
GROUP B ACC. TO STANDARD STN 73 2601

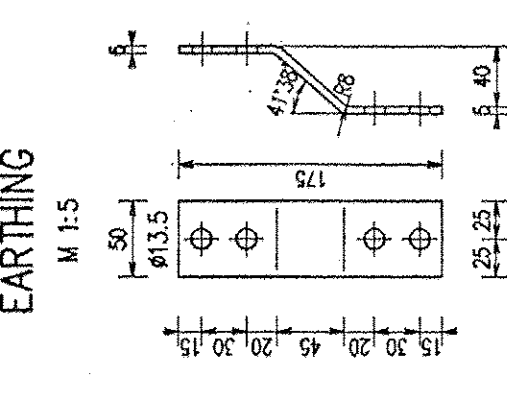
CELKOVÁ HMOTNOSŤ / TOTAL WEIGHT : 505.0 kg

24				OECL/ STEEL PL30.20-43	S 235	9,6
12				OECL/ STEEL #24-135	S 235	6,0
4				PODŁOŻKA HRUBA/ WASHER #25	STN 02 1708	0,6
24				MATICA/ NUT M24	STN 02 1801.1	0,9
12				PODŁOŻKA PRUŻNA/ LOCKING WASHER #122	STN 021741	0,3
12				SKRUTKA S. MATICOU/ SCREW WITH WASHER M12x35	ON 021308	0,6
3				OECL/ STEEL PL5.50-195	S 355	1,2
24				PODŁOŻKA PRE TYC "U"/ WASHER FOR ROD "U" #18	STN 02 1739	0,7
42				PODŁOŻKA PRUŻNA/ LOCKING WASHER #16,3	STN 02 1741	0,8
78				PODŁOŻKA HRUBA/ WASHER #18	STN 02 1721	1,4
24				SKRUTKA S. MATICOU/ SCREW WITH WASHER M16x55	ON 02 1308	3,7
48				SKRUTKA S. MATICOU/ SCREW WITH WASHER M16x45	ON 02 1308	6,9
4				OECL/ STEEL PL5.80-50	S 235	3,8
24				OECL/ STEEL U140-3700	S 235	236,8
6				OECL/ STEEL PL10.50-150	S 355	3,5
36				OECL/ STEEL PL5.80-160	S 355	18,1
56				OECL/ STEEL PL5.80-140	S 355	15,8
6				OECL/ STEEL L110.8-240	S 355	19,3
6				OECL/ STEEL L140.12-520	S 355	79,3
12				OECL/ STEEL L50.5-2060	S 355	93,3
QTY				DESCRIPTION	MATERIAL	WEIGHT
ITEM	PART					

## KOTEVNĀ SKRUTKA / ANCHOR



ZEMŇOVACÍ PRAPOREC  
EARTHING



## vúje

64 Trnava

[illegible]