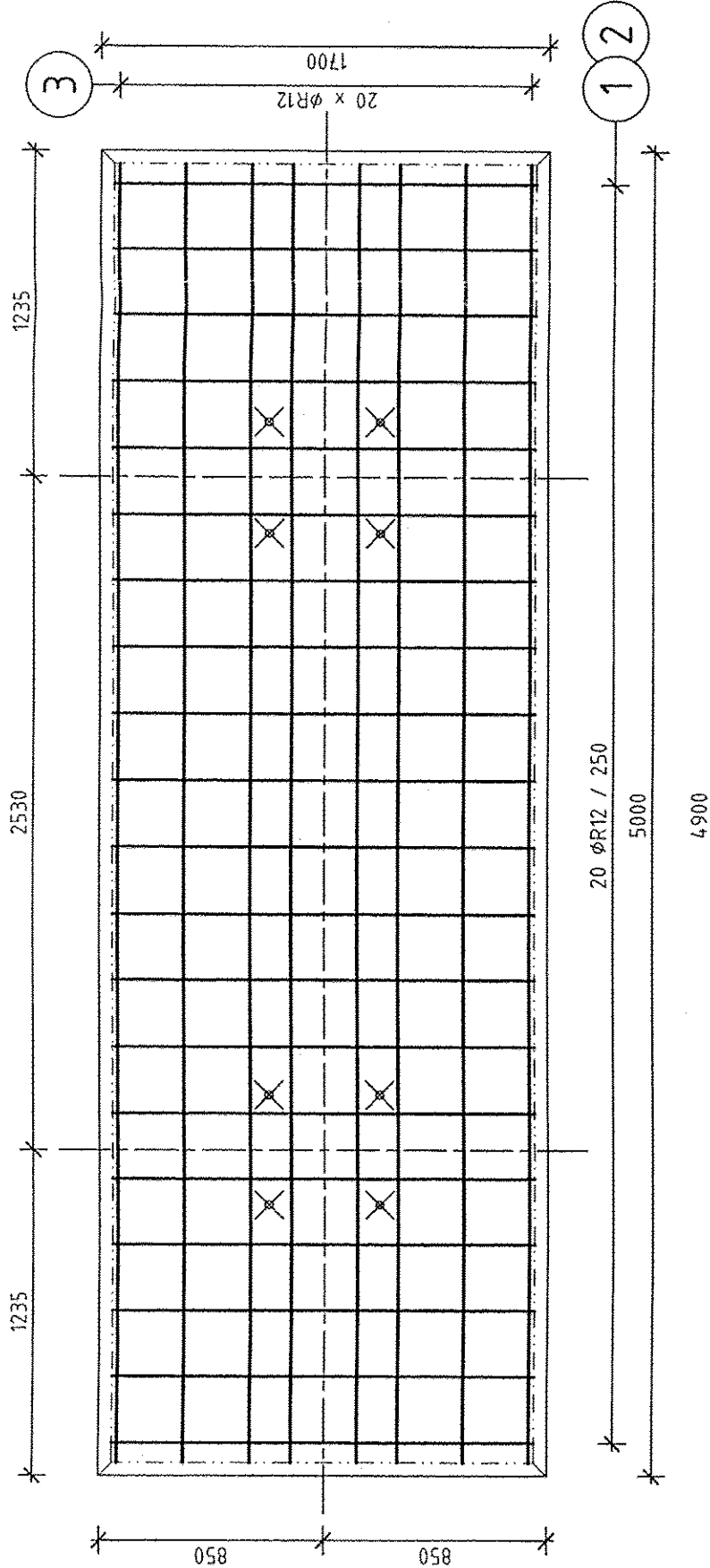


# PÔDORYS/PLAN VIEW

# VÝPIS VÝSTUŽE TABLE OF ARMATURE

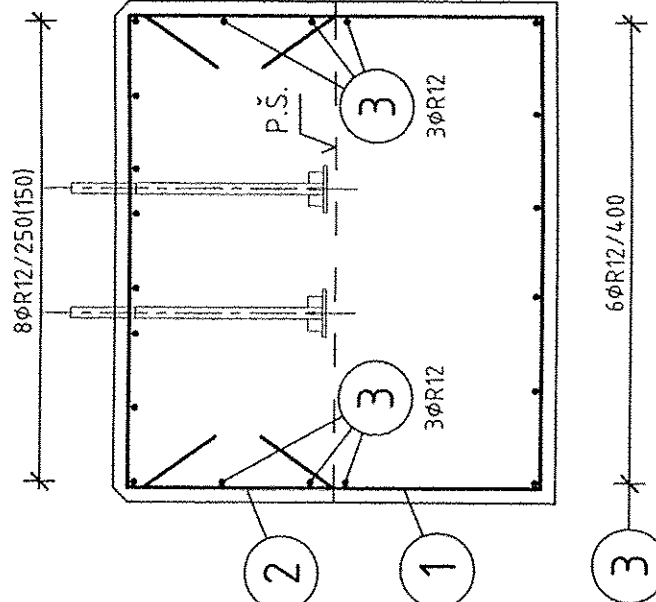


Číslo výstuže Armature No.	Priemer [mm] Diameter	Dĺžka [m] Length	Počet [ks] Pieces	Celkom m Total
1	R12	4.9	20	98
2	R12	3.6	20	72
3	R12	4.9	20	98
CELKOM TOTAL				
			m'	268
			kg/m'	0.888
			kg	237.9
			kg	237.9

## POZNÁMKY/NOTES:

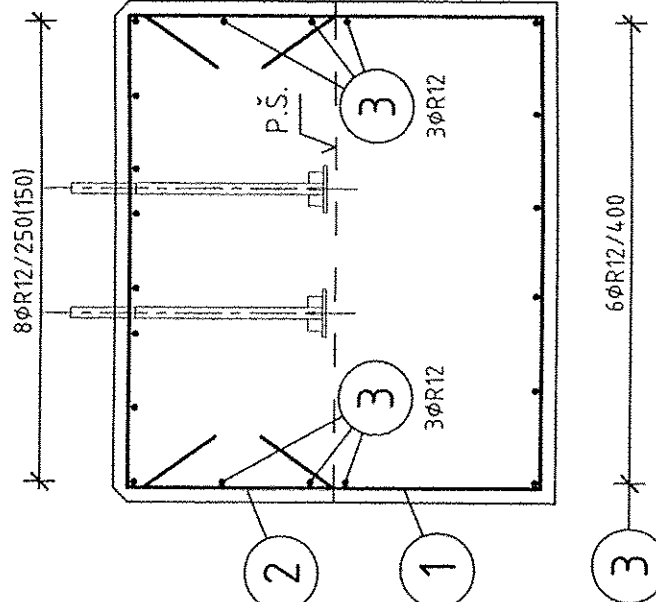
- KRYTIE VÝSTUŽE MIN. 50 mm
- CONCRETE WEARING SURFACE MIN. 50 mm

## REZ/CUT B-B



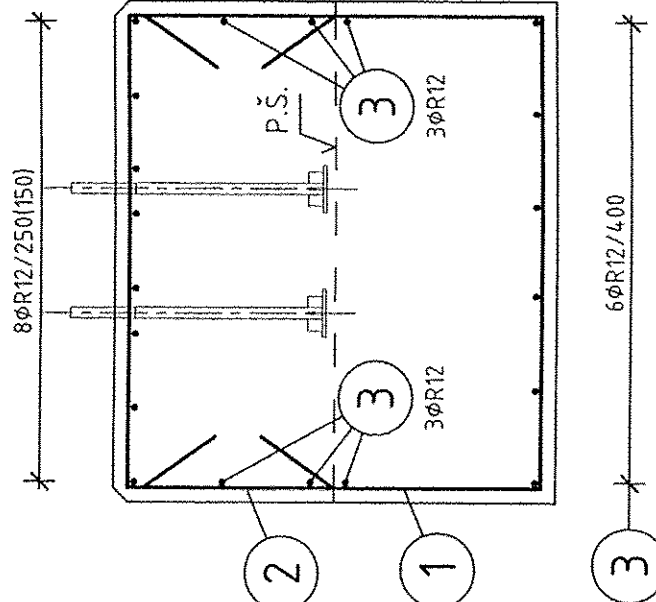
3 6+6+8=20 ØR12 - 4900

## REZ/CUT B-B



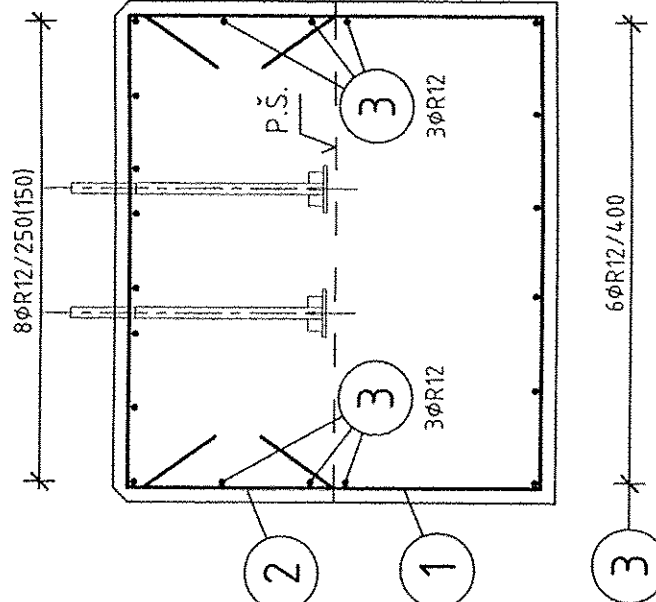
3 6+6+8=20 ØR12 - 4900

## REZ/CUT B-B



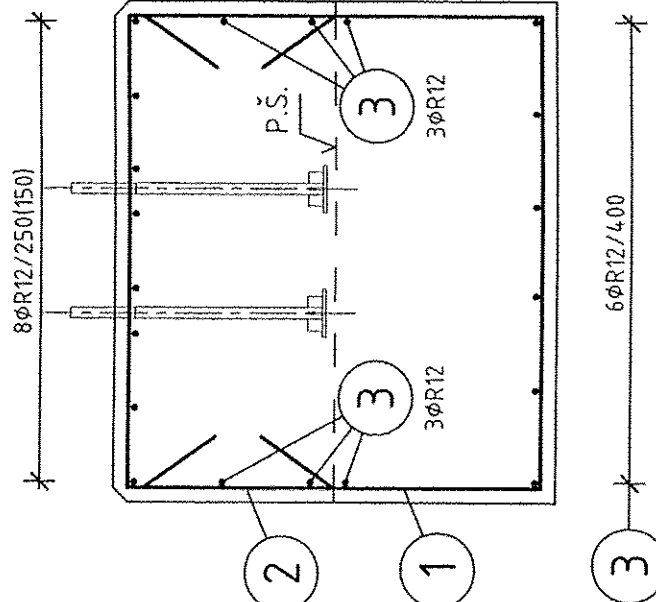
3 6+6+8=20 ØR12 - 4900

## REZ/CUT B-B



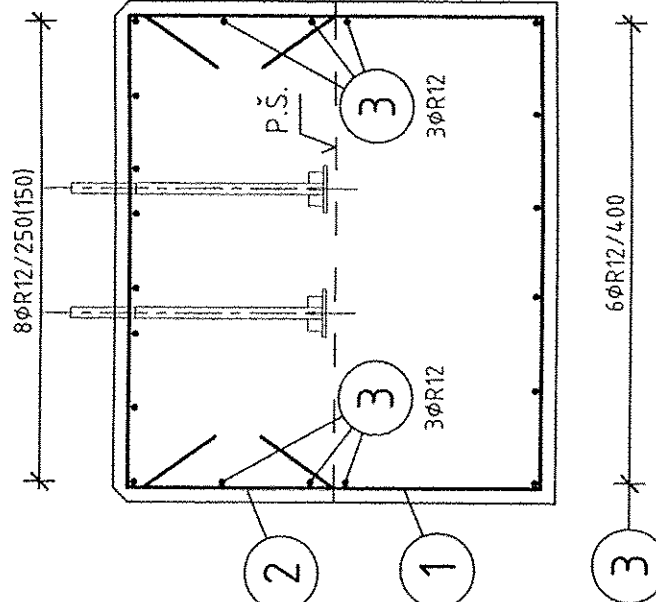
3 6+6+8=20 ØR12 - 4900

## REZ/CUT B-B



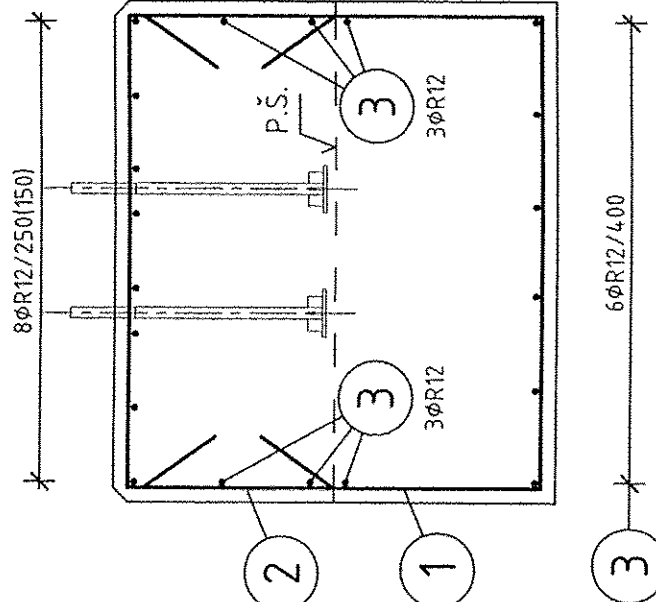
3 6+6+8=20 ØR12 - 4900

## REZ/CUT B-B



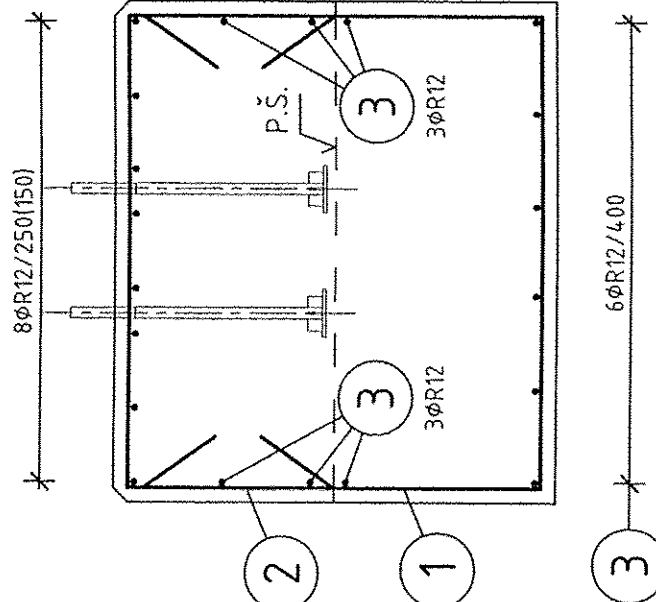
3 6+6+8=20 ØR12 - 4900

## REZ/CUT B-B



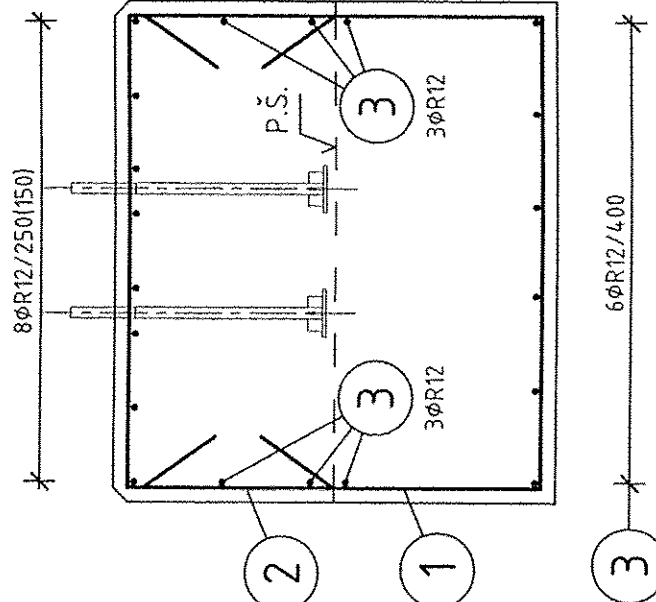
3 6+6+8=20 ØR12 - 4900

## REZ/CUT B-B



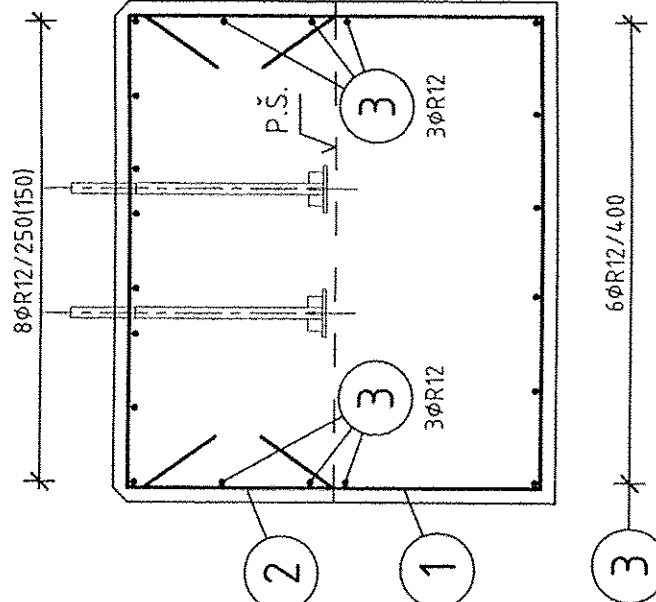
3 6+6+8=20 ØR12 - 4900

## REZ/CUT B-B



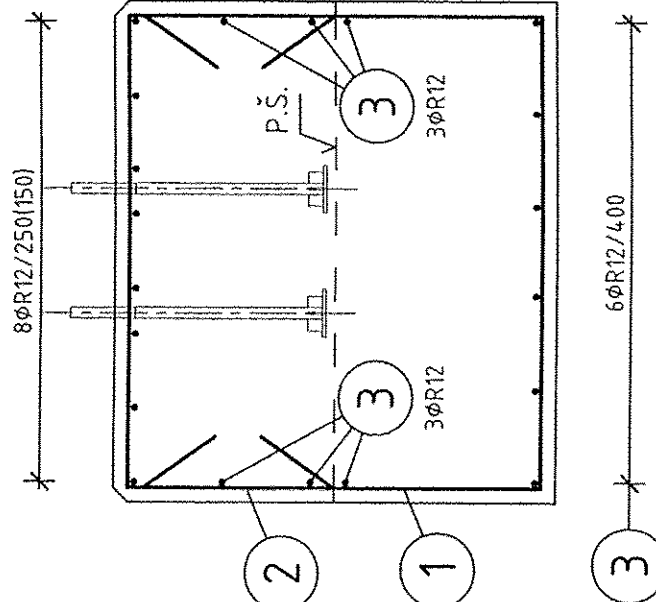
3 6+6+8=20 ØR12 - 4900

## REZ/CUT B-B



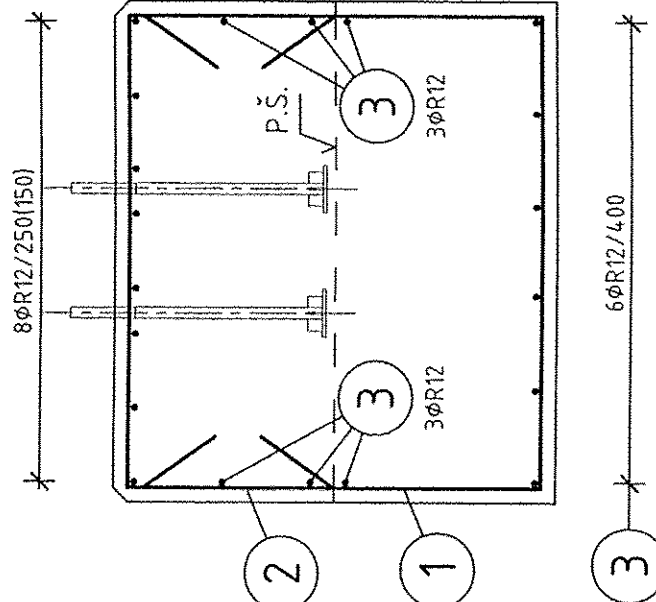
3 6+6+8=20 ØR12 - 4900

## REZ/CUT B-B



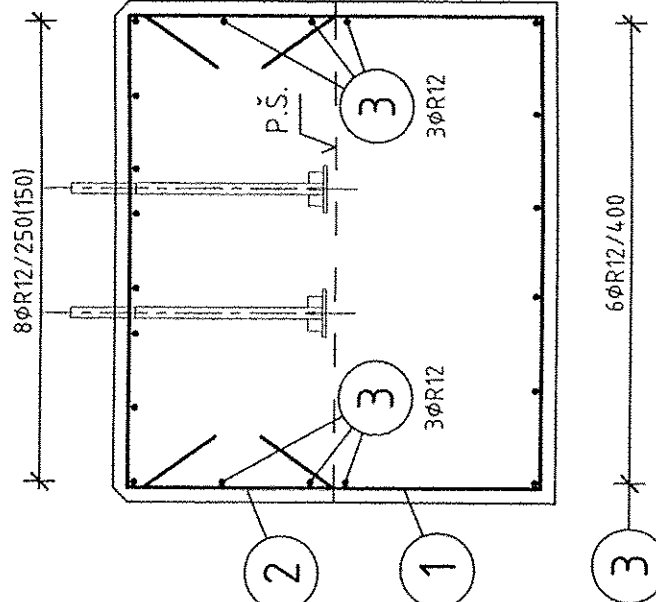
3 6+6+8=20 ØR12 - 4900

## REZ/CUT B-B



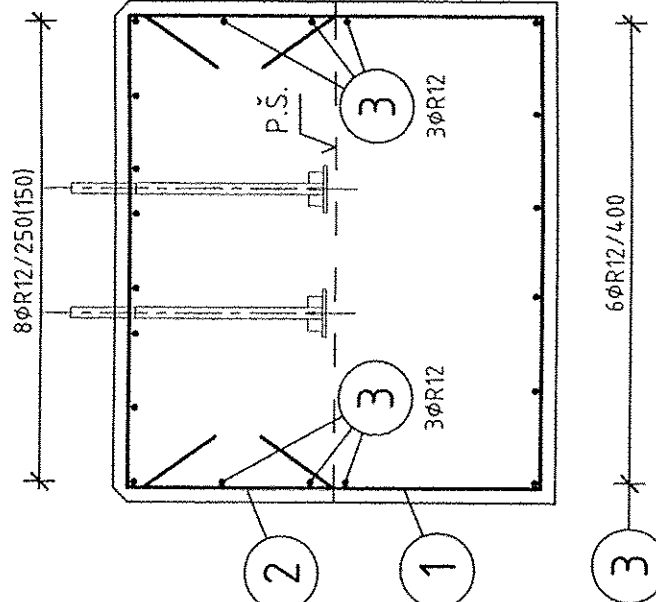
3 6+6+8=20 ØR12 - 4900

## REZ/CUT B-B



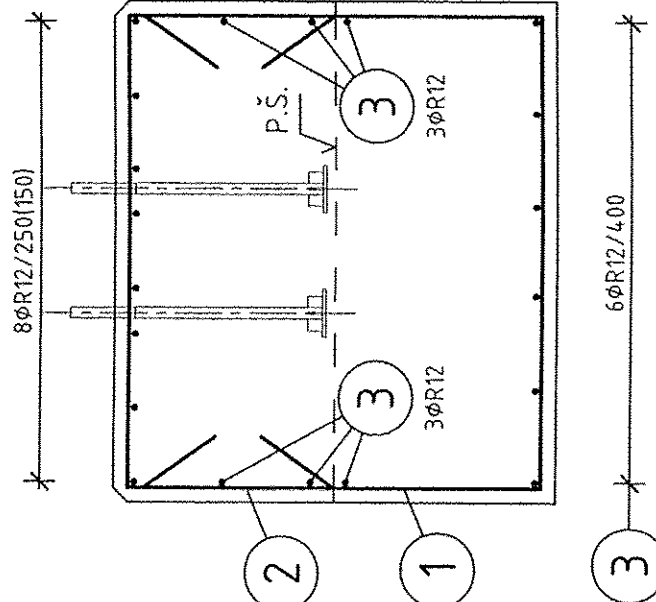
3 6+6+8=20 ØR12 - 4900

## REZ/CUT B-B



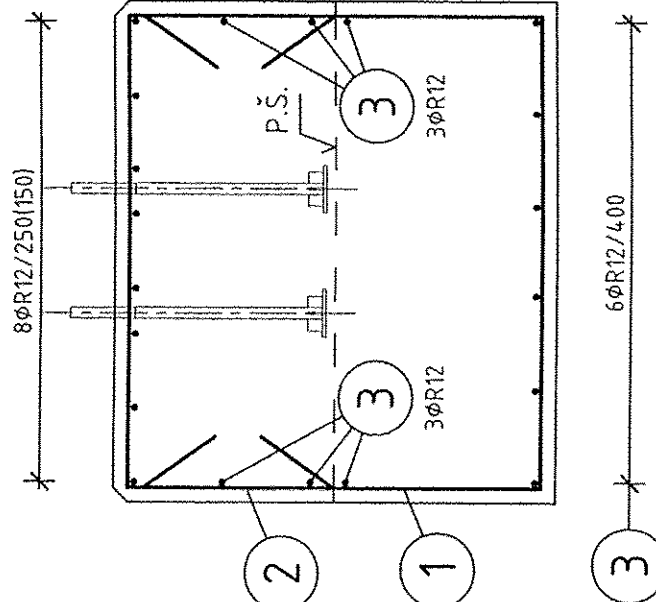
3 6+6+8=20 ØR12 - 4900

## REZ/CUT B-B



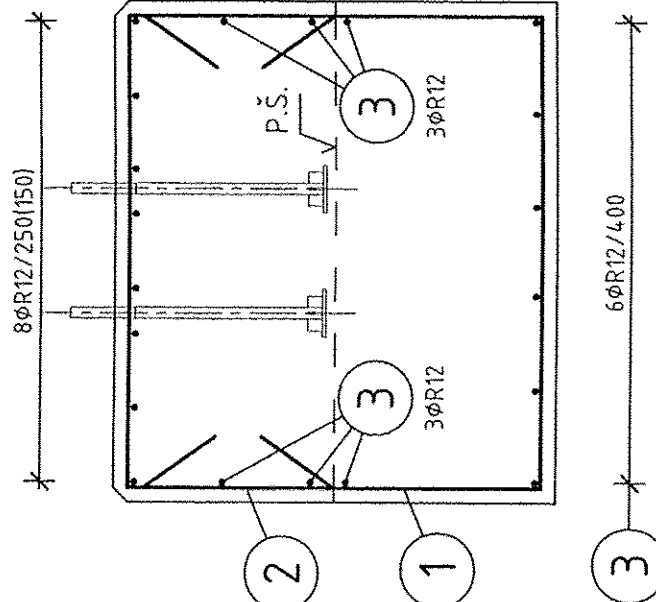
3 6+6+8=20 ØR12 - 4900

## REZ/CUT B-B



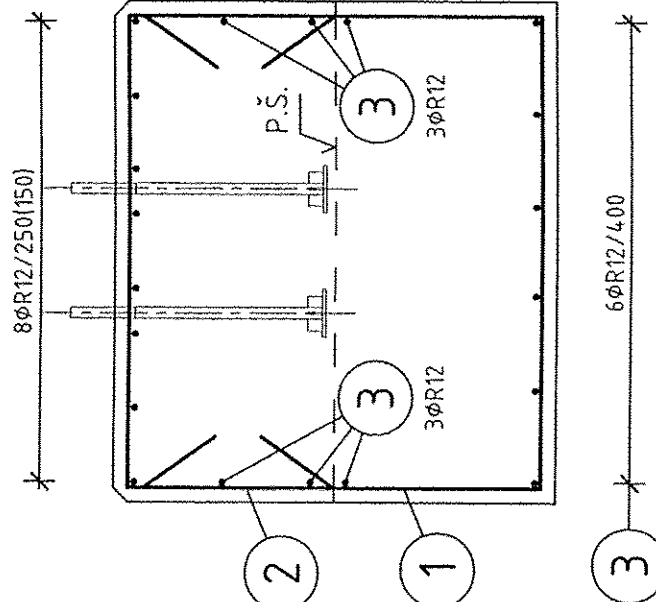
3 6+6+8=20 ØR12 - 4900

## REZ/CUT B-B



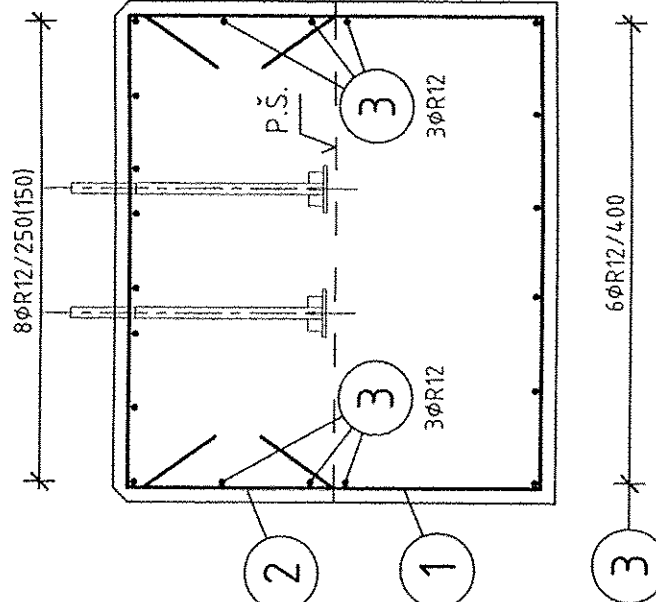
3 6+6+8=20 ØR12 - 4900

## REZ/CUT B-B



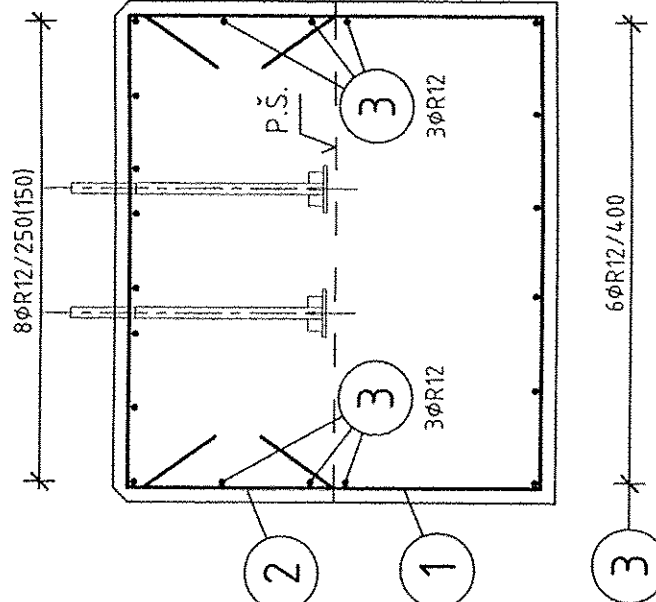
3 6+6+8=20 ØR12 - 4900

## REZ/CUT B-B



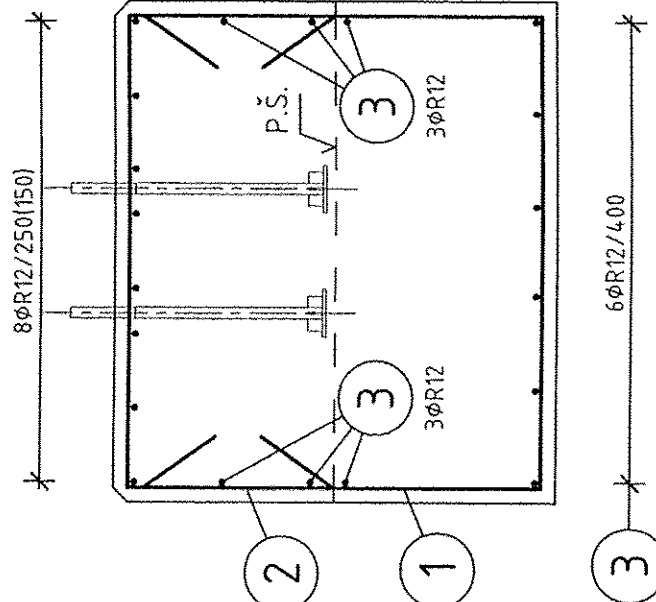
3 6+6+8=20 ØR12 - 4900

## REZ/CUT B-B



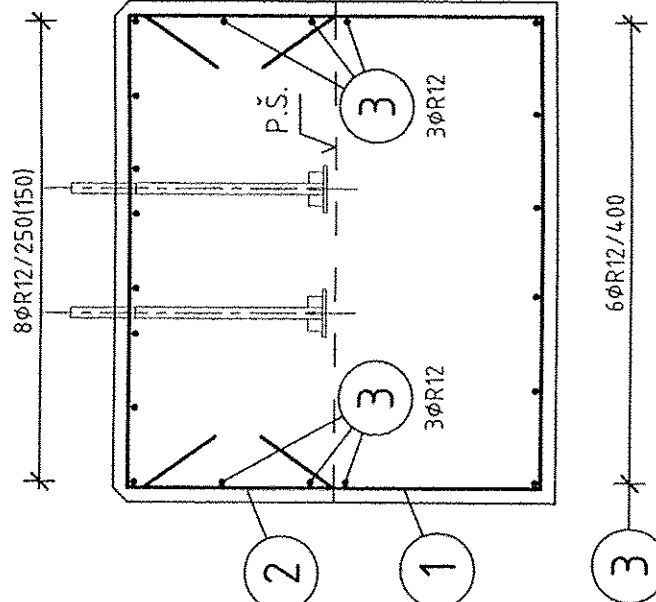
3 6+6+8=20 ØR12 - 4900

## REZ/CUT B-B



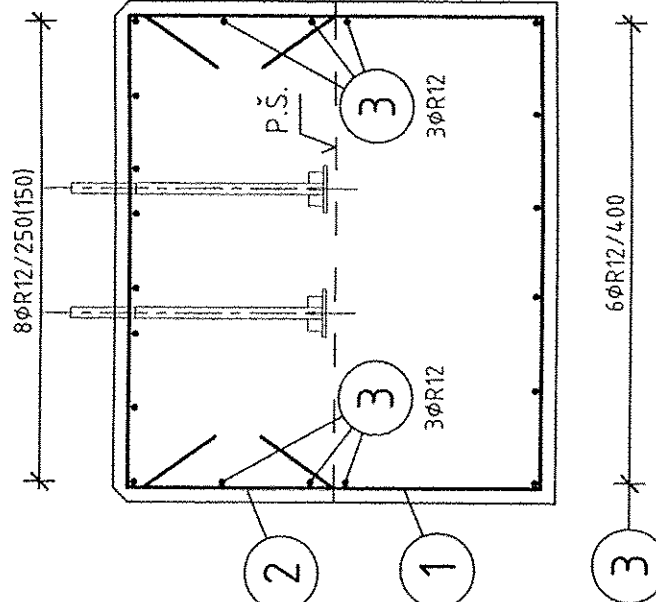
3 6+6+8=20 ØR12 - 4900

## REZ/CUT B-B



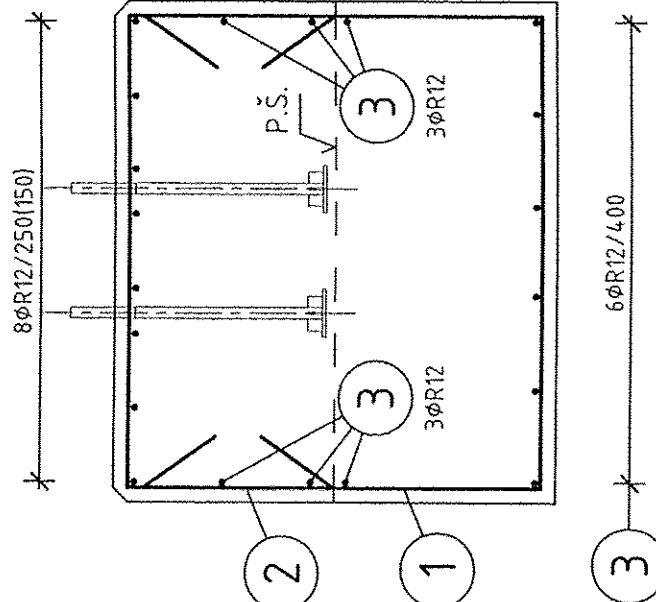
3 6+6+8=20 ØR12 - 4900

## REZ/CUT B-B



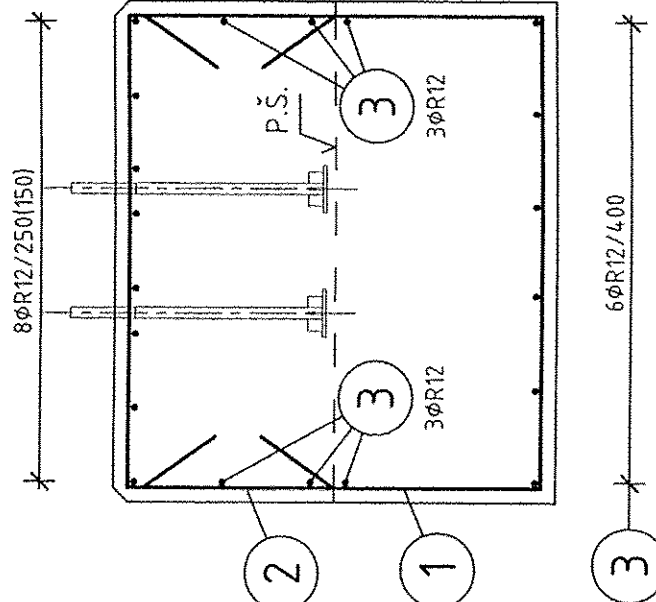
3 6+6+8=20 ØR12 - 4900

## REZ/CUT B-B



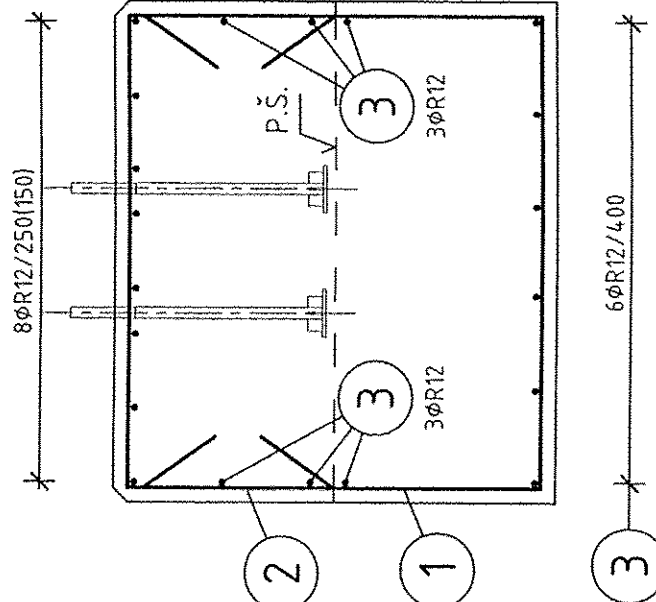
3 6+6+8=20 ØR12 - 4900

## REZ/CUT B-B



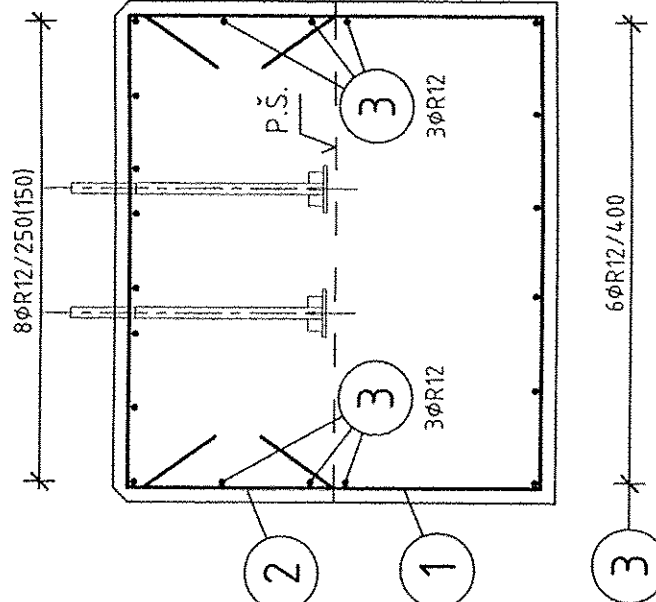
3 6+6+8=20 ØR12 - 4900

## REZ/CUT B-B



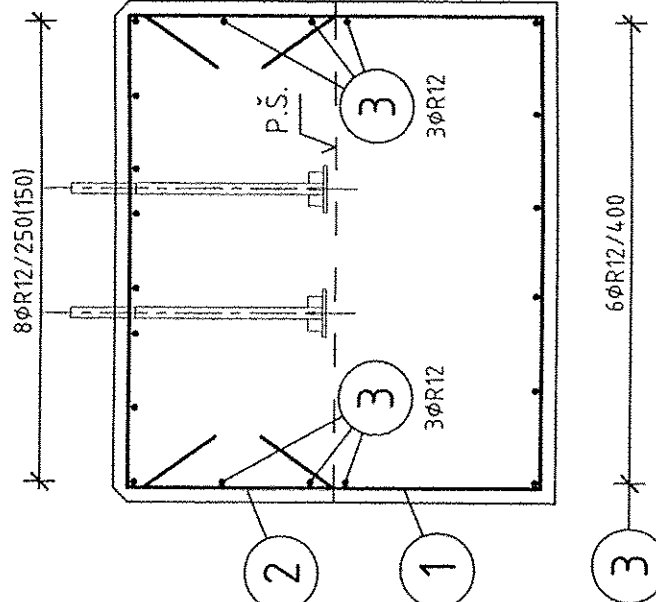
3 6+6+8=20 ØR12 - 4900

## REZ/CUT B-B



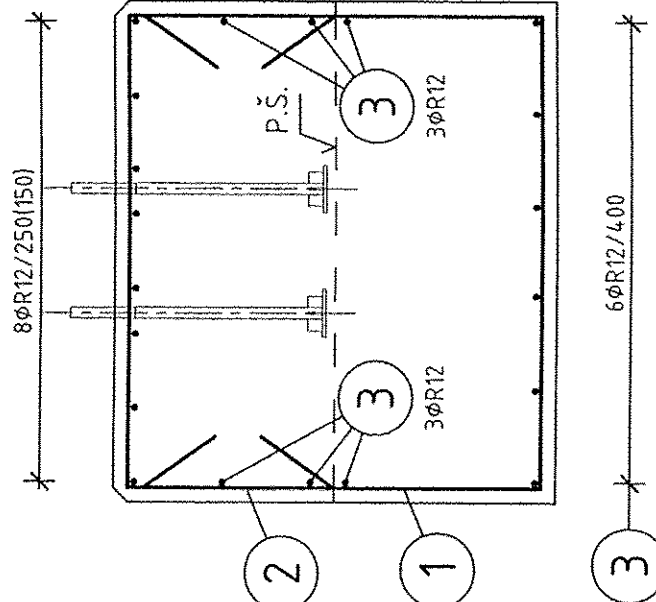
3 6+6+8=20 ØR12 - 4900

## REZ/CUT B-B



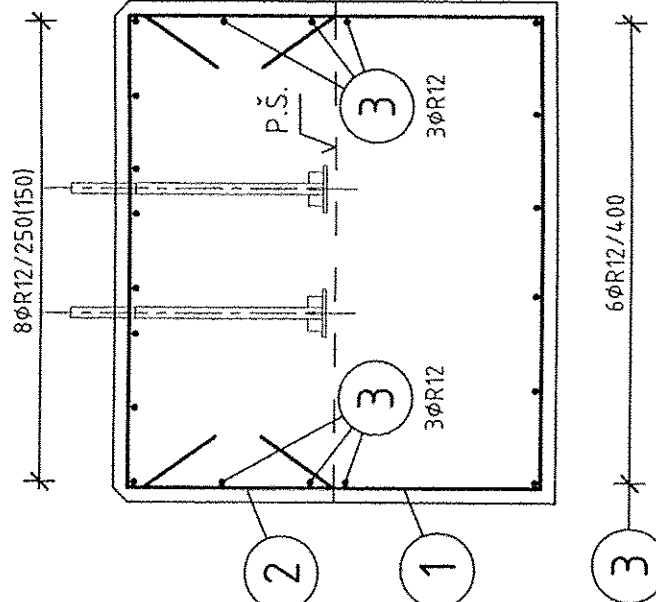
3 6+6+8=20 ØR12 - 4900

## REZ/CUT B-B



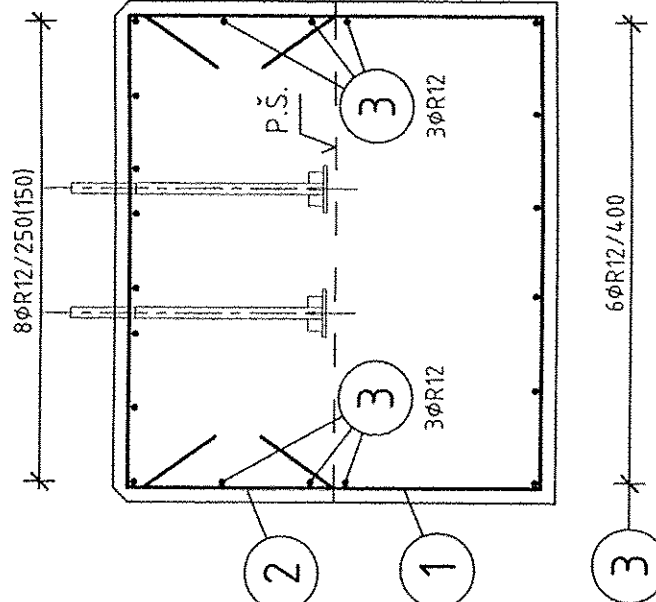
3 6+6+8=20 ØR12 - 4900

## REZ/CUT B-B



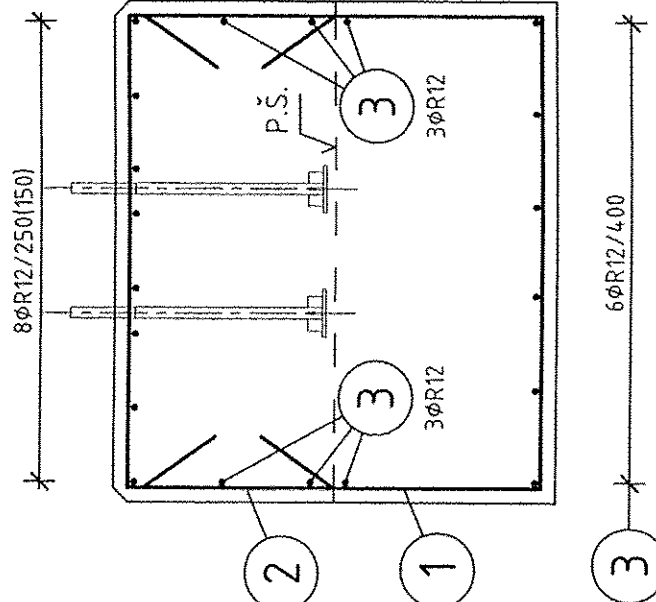
3 6+6+8=20 ØR12 - 4900

## REZ/CUT B-B



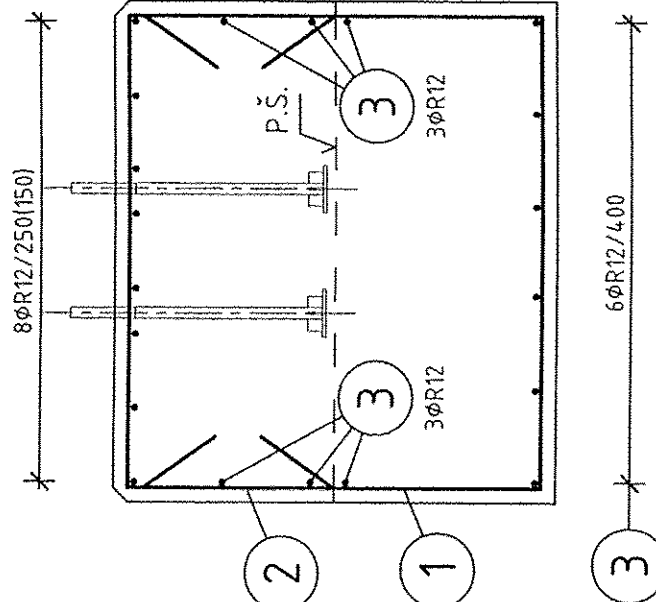
3 6+6+8=20 ØR12 - 4900

## REZ/CUT B-B



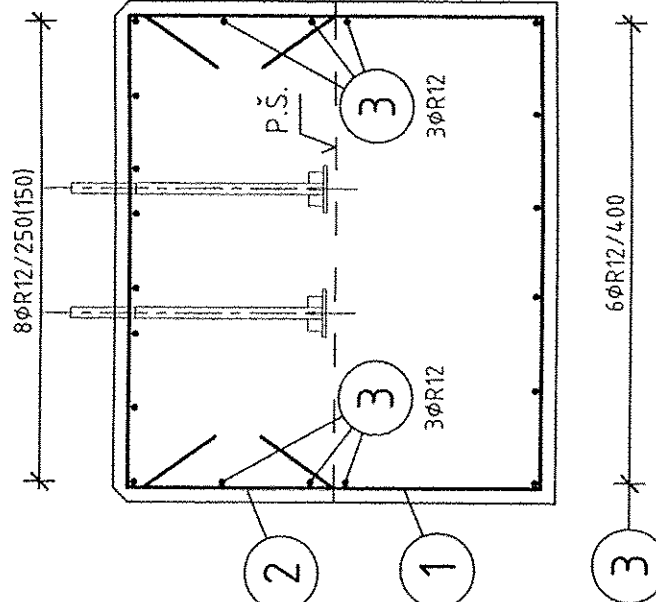
3 6+6+8=20 ØR12 - 4900

## REZ/CUT B-B



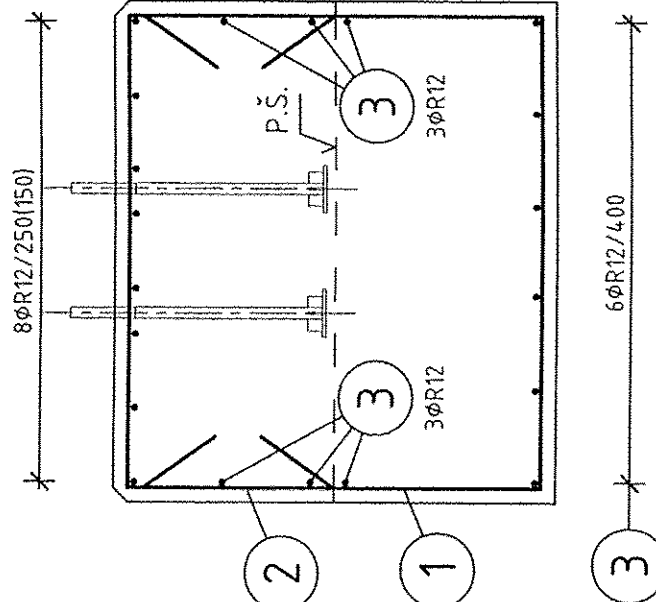
3 6+6+8=20 ØR12 - 4900

## REZ/CUT B-B



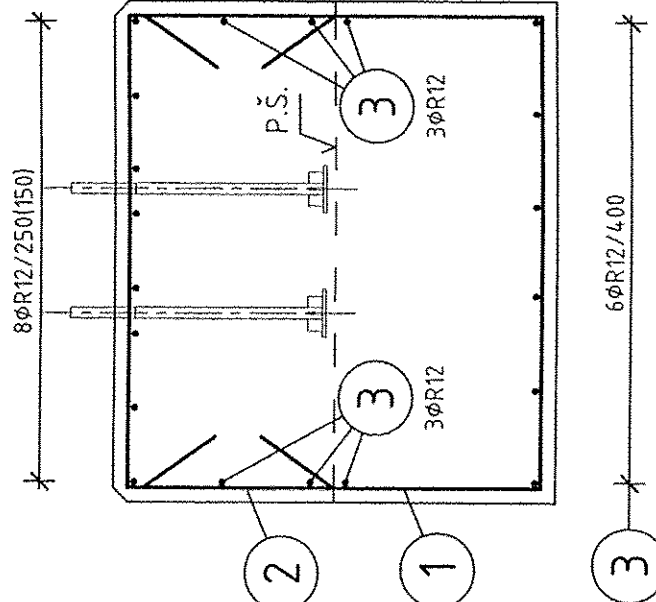
3 6+6+8=20 ØR12 - 4900

## REZ/CUT B-B



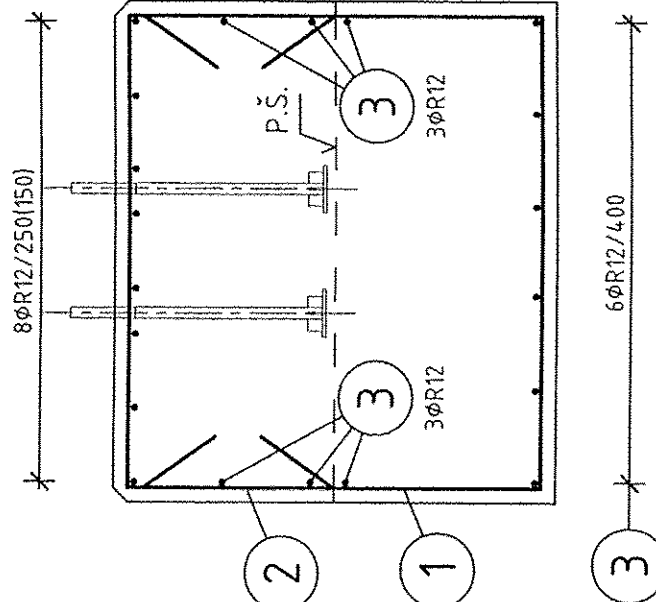
3 6+6+8=20 ØR12 - 4900

## REZ/CUT B-B



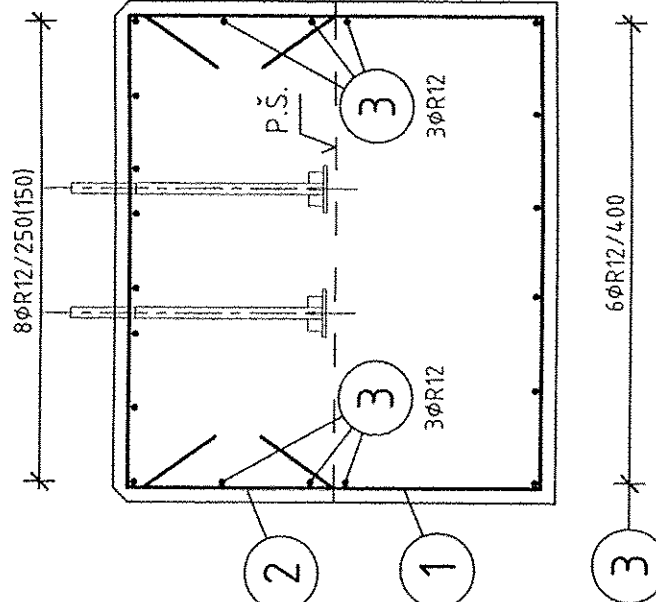
3 6+6+8=20 ØR12 - 4900

## REZ/CUT B-B



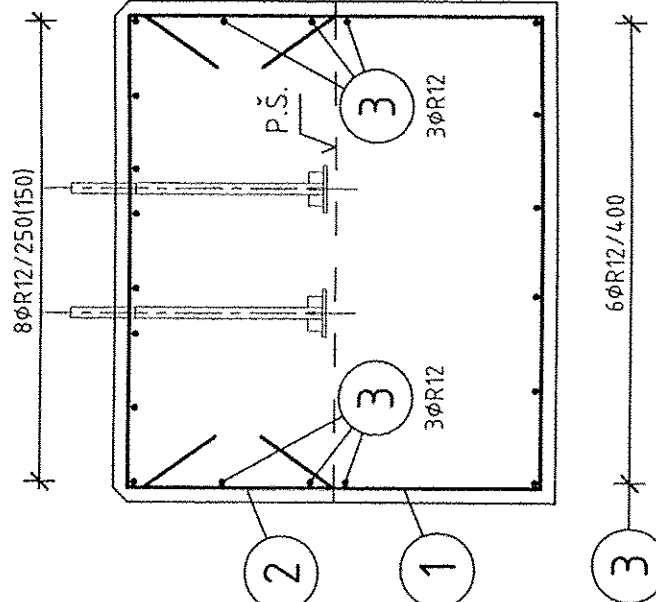
3 6+6+8=20 ØR12 - 4900

## REZ/CUT B-B



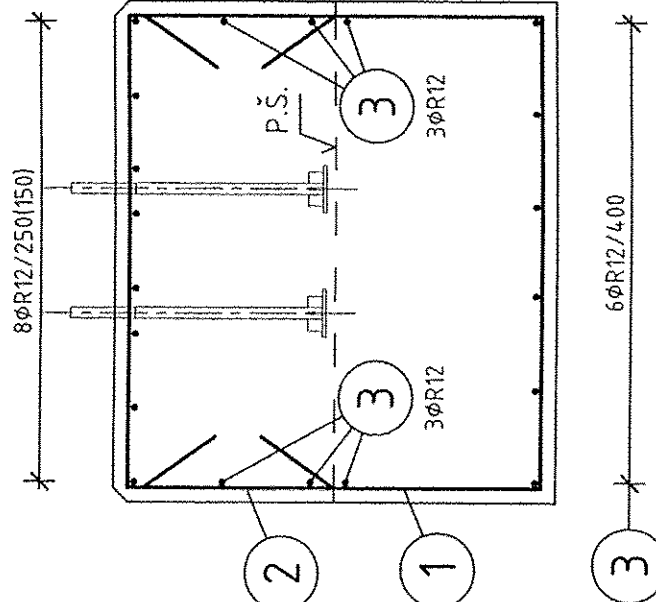
3 6+6+8=20 ØR12 - 4900

## REZ/CUT B-B



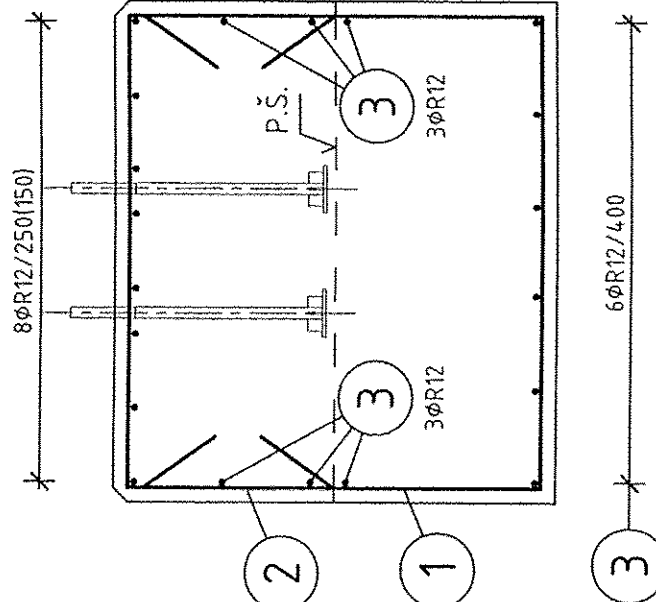
3 6+6+8=20 ØR12 - 4900

## REZ/CUT B-B



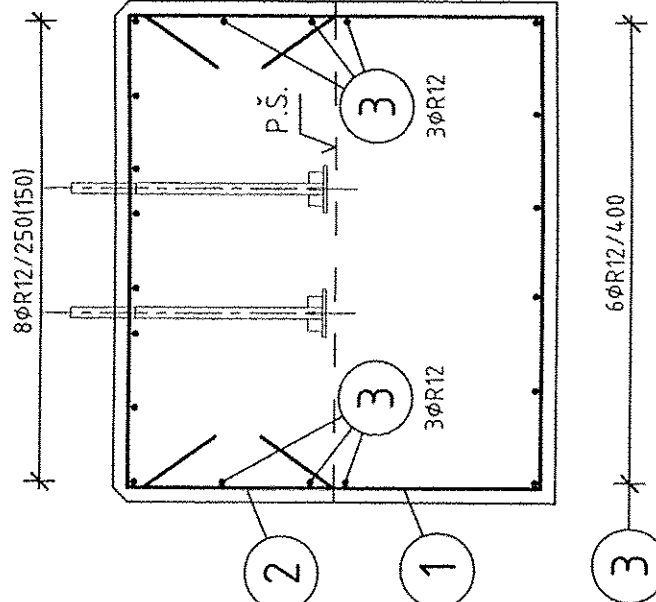
3 6+6+8=20 ØR12 - 4900

## REZ/CUT B-B



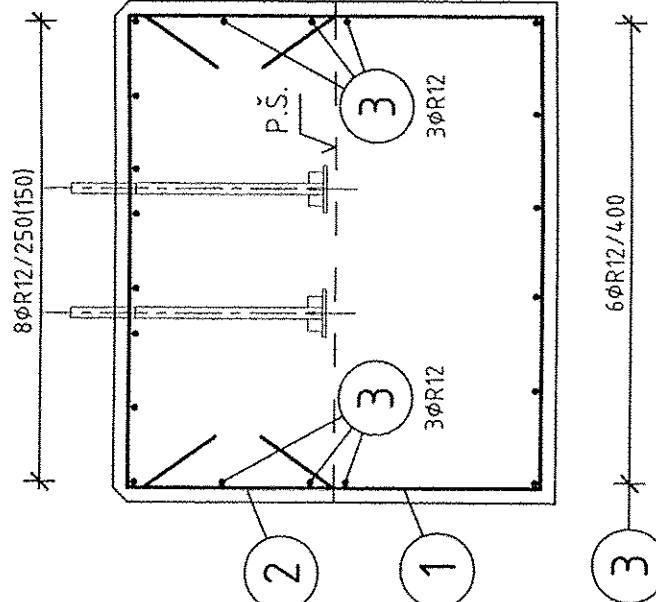
3 6+6+8=20 ØR12 - 4900

## REZ/CUT B-B



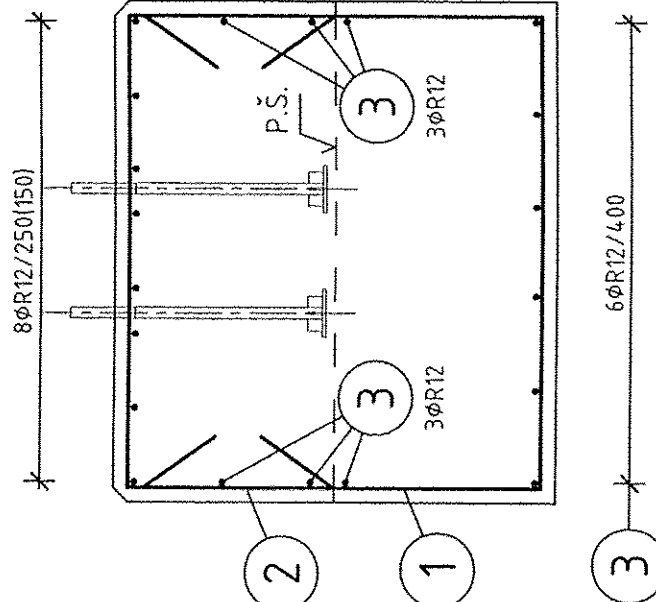
3 6+6+8=20 ØR12 - 4900

## REZ/CUT B-B



3 6+6+8=20 ØR12 - 4900

## REZ/CUT B-B



3 6+6+8=20 ØR12 - 4900

## REZ/CUT B-B

