

7XV75 Test Switch

Application

The test switch serves in the testing of protection devices using secondary injection test sets, for example 7VP15 (Omicron CMC 56).

The following versions are in a flush mounting case available:

- For feeder protection without an open starpoint.
- For feeder protection without an open starpoint and with additional contacts.
- For feeder protection without an open starpoint for two CT cores or separate earth fault CT.
- For feeder protection with an open starpoint.
- For feeder protection with an open starpoint and independent switchable trip and c.t. circuits.
- For a 3-winding transformer differential protection.

The test device can be used with auxiliary supplies ranging from 24 V to 250 V DC. This makes selection between varying power supply models unnecessary.

Mode of operation

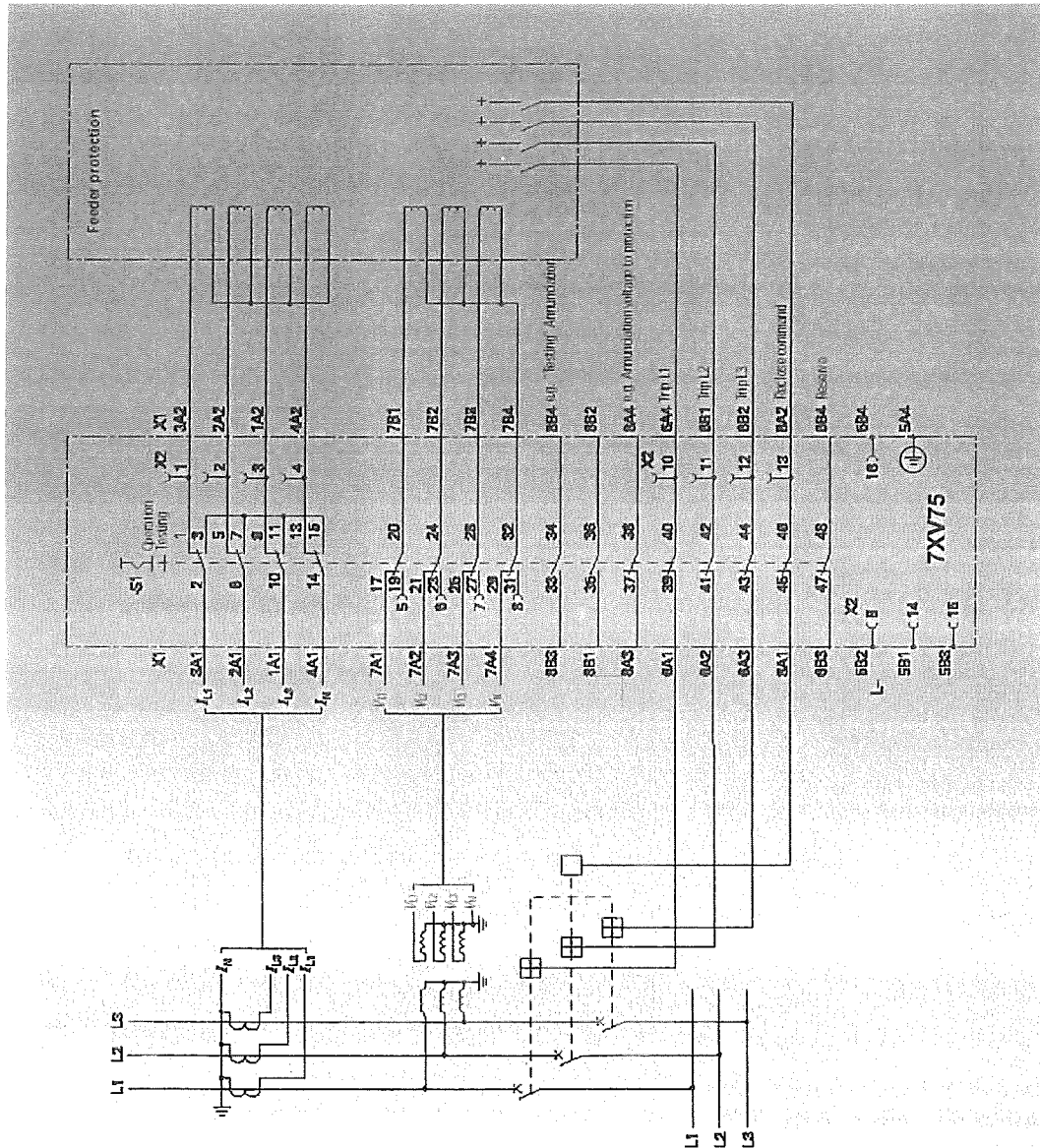
The 7XV75 test switch serves for testing protection devices including C.T. circuits and command contacts. With the help of the switches located on the front side, the current and voltage inputs as well as the circuits of the protection device to be tested are interrupted and applied to the plug-in connector located on the front side. Via this plug-in connector currents and voltages can be fed by an injection test set and the different commands and indications can be tested.



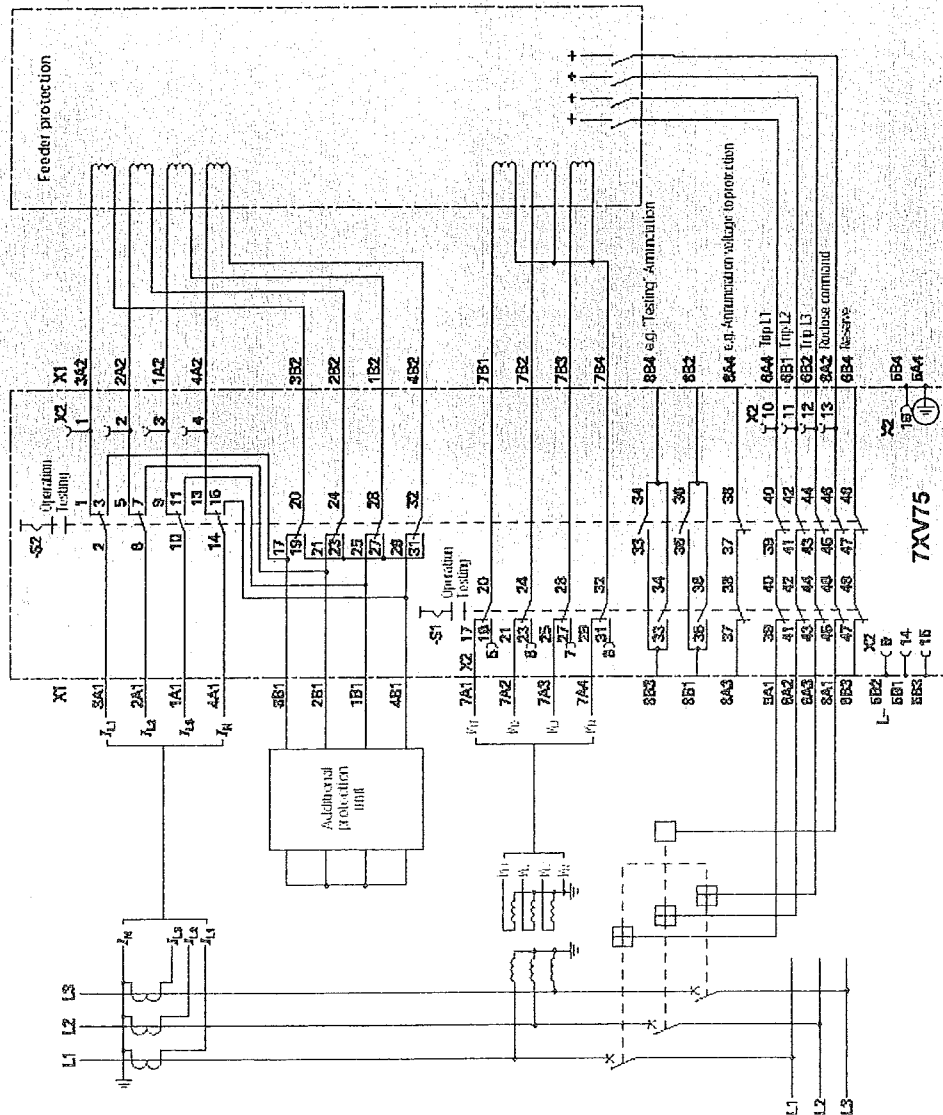
7XV75 test switch

Selection and ordering data

Test switch	Rated operating voltage V_n Rated operating current I_n Test current capacity for 1 s for 10 s	400 V AC 6 A 150 A 60 A
Construction	Metal case Dimension Weight	7XP20 1/6 of 19" wide approx. 3,4 kg

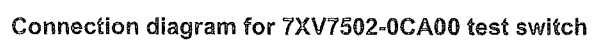


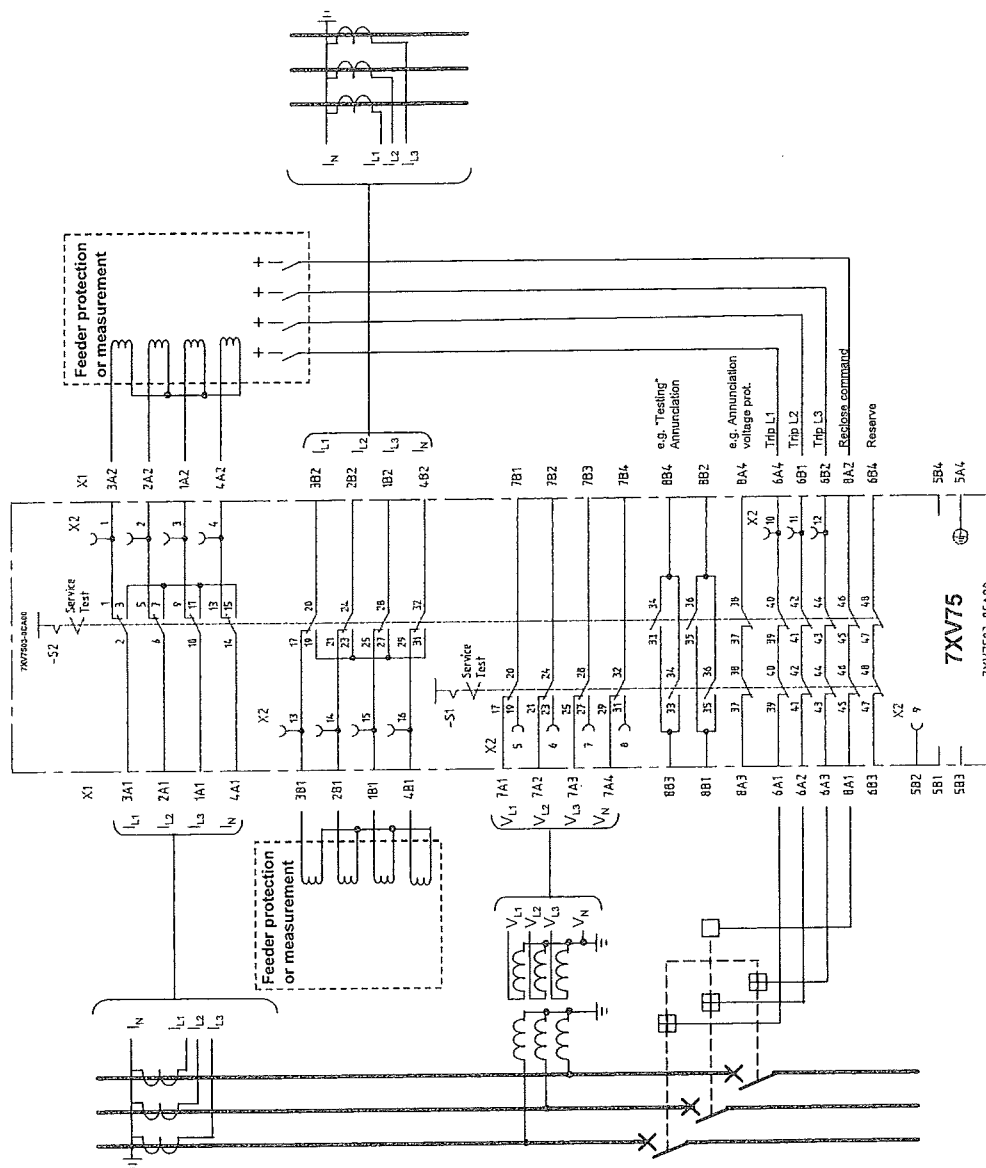
Connection diagram for 7XV7500-0CA00 test switch



Connection diagram for 7XV7501-0CA00 test switch

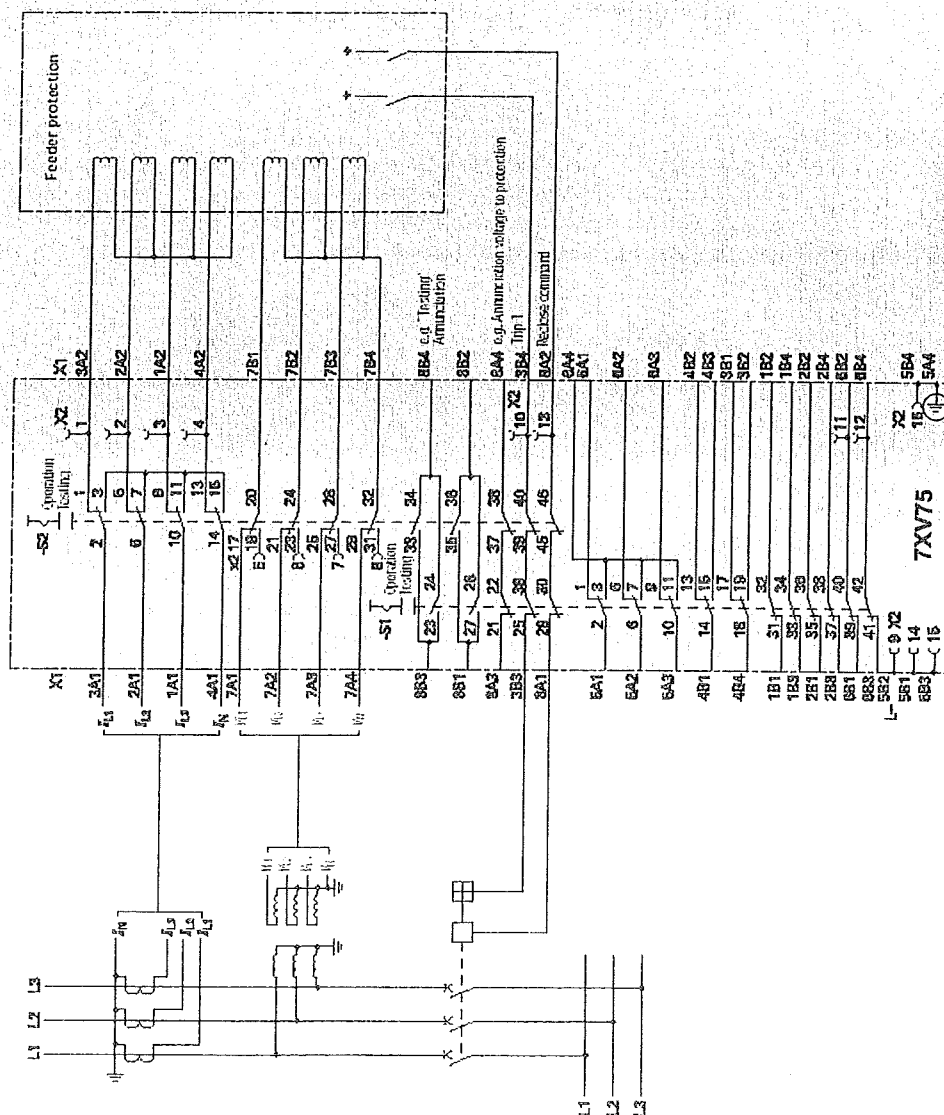
Typically not for distance protection or if used please consider the switch order of S1 and S2
(Operation->Test: S2 (I) – S1 (V); Test->Operation: S1 (V) – S2 (I)).



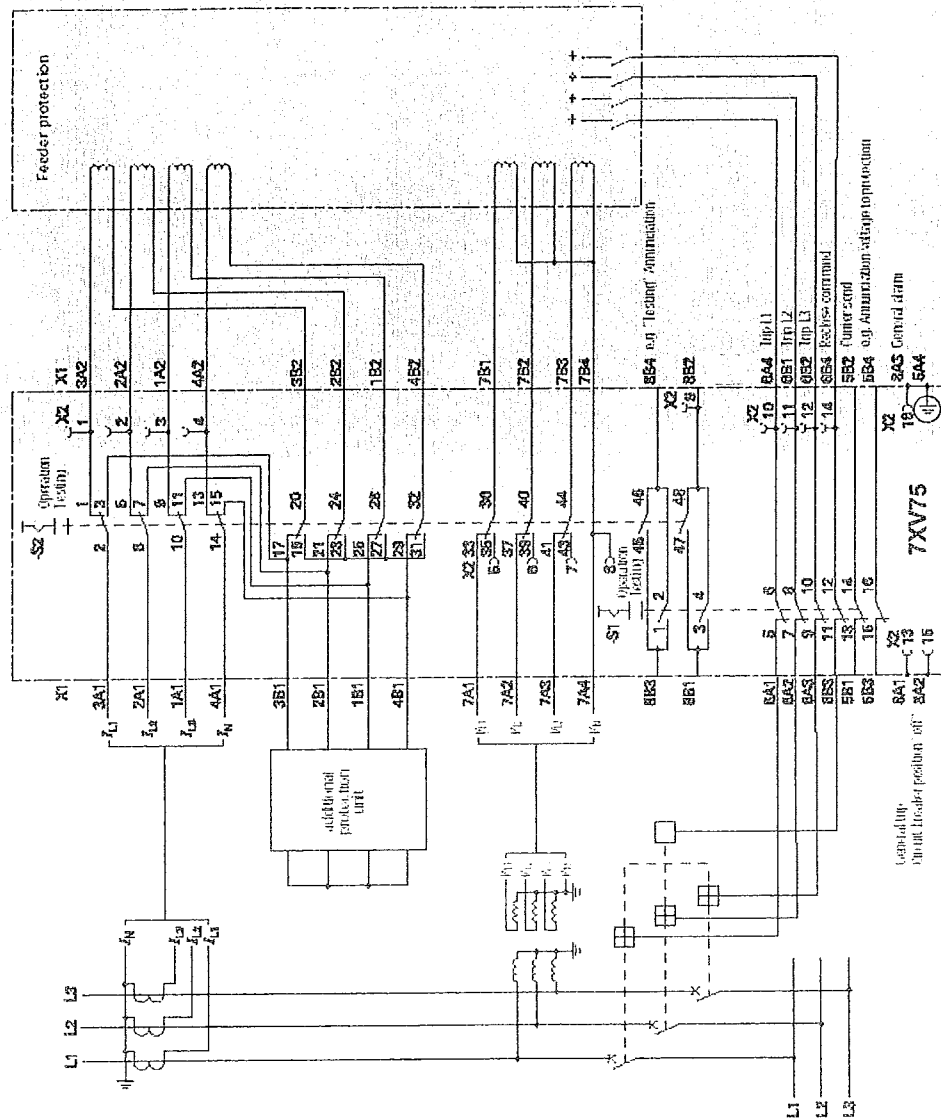


Connection diagram for 7XV7503-0CA00 test switch

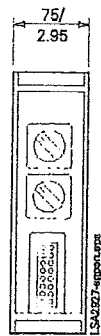
Typically not for distance protection or if used please consider the switch order of S1 and S2
(Operation->Test: S2 (I) – S1 (V); Test->Operation: S1 (V) – S2 (I)).



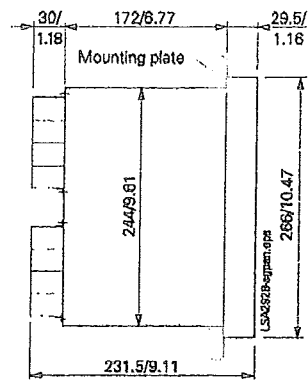
Connection diagram for 7XV7507-0CA00 test switch



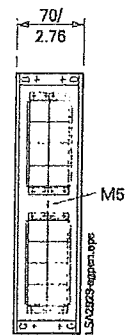
Connection diagram for 7XV7508-0CA00 test switch



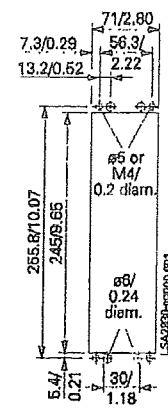
Front view



Side view



Rear view



Panel cutout

Selection and ordering data

Item

Order No.:

Test switch

7 X V 7 5 0 ☐ - ☐ C A 0 0

Application

- Without open starpoint for feeder protection
- With open starpoint for feeder protection
- For 3-winding transformer differential protection
- Without open starpoint for two CT cores or separate earth fault CT
- Without open starpoint for feeder protection and with additional contacts
- With open starpoint and independent switchable trip and C.T. circuits for feeder protection

0
1
2
3
7
8

Front Test Plug connection

- With 16 pole harting plug
- With 16 banana plugs

0
1

Accessories:

- 7XV6200-0 Connecting cable with 16 pole harting plug and open end
- 7XV6200-2 Connecting cable with 16 pole harting plug and 17 cable lug 6mm
- 7XV6200-3 Connecting cable with 16 pole harting plug and 17 banana plugs 4mm

Conditions of Sale and Delivery

Subject to the
General Conditions of Supply
and Delivery
for Products and Services
of the Electrical and

Electronic Industry and to any
other conditions agreed upon
with the recipients of catalogs.

The technical data, dimensions
and weights are subject to
change unless otherwise stated
on the individual pages of this
catalog.

The illustrations are for reference
only. We reserve the right to
adjust the prices and shall
charge the price applying on the
date of delivery.

Export Regulations

In accordance with present
German and US export regula-
tions, export licences not re-
quired for the products listed in
this catalog.

Export and re-export are there-
fore permissible without the
approval of the relevant authori-
ties except where current Ger-
man export regulations contain
country-specific restrictions.
Relevant are the criteria stated in
the delivery note and in the
invoice. An export licence may
be required due to country-
specific application of the prod-
uct.
Subject to change without notice.

Embargo data
AL: N, ECCN: N

Responsible for
Technical contents:
Dipl.-Ing. Martin Berndsen,
Siemens AG
PTD PA 13, Nürnberg

Postal Address:
Siemens AG
Power Transmission and Distribution
Power Automation Division
Humboldtstr. 59
D-90459 Nürnberg

Trademarks

All product designations used
are trademarks or product
names of Siemens AG or of
other suppliers.

Siemens online

The section Power Transmission
and Distribution
Power Automation is
in Internet to find with:

<http://www.ptd.siemens.de>

