

US STEEL KOSICE/SLOVAKIA  
50.3023.01  
SUBSTATION T81

INCOMING FEEDER  
CIRCUIT DIAGRAM

A = L01

/ A01

07.12.2006 HJ0115ME  
00978101  
A01  
ADAM

03 AS BUILT      5.12.2006      AD  
02 FACT.-REV.      30.10.2005      BL  
01 Approval      30.06.2005      Hae  
Nr. Alteration      Date      Name

D009781.01. 601-3.AHA

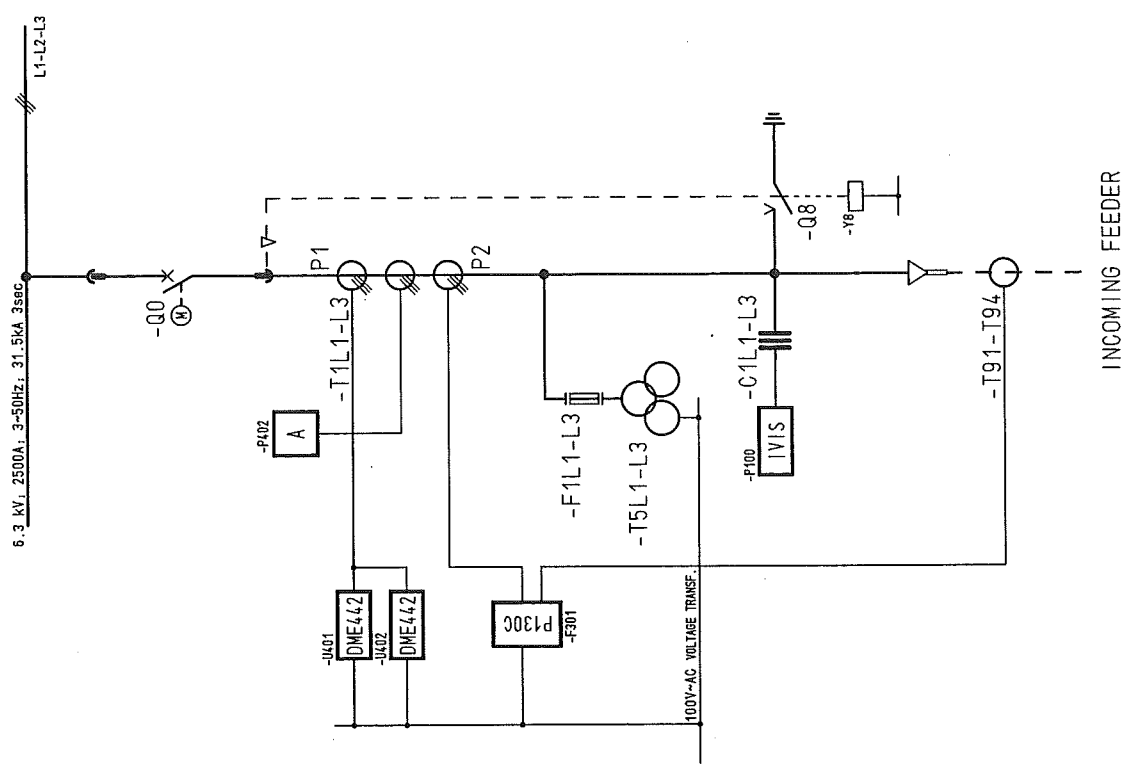
50.3023.01-A4-741-103  
COVER SHEET  
PANEL  
01

DATE :	06.06.2005
prep. :	Hönicke
Check:	Grohmann
Norm :	

INSTRU. AND CONTROL				
FUNCTION	LOCAL	LOCAL CONTROL	REMOTE CONTROL	REMARKS
CONTROL	-Q8 -Q0		-Q0	
STATUS SIGNAL	-Q0, -Q8		-Q0, -Q8	
MEASUREMENT	I (L2)		I (L2), U(L1-L2) P (P2), Q(Q2)	
PROTECTION	WICOM P130C			
ANSI	27, 32, 46, 48, 49, 50P, 50N, 50BF, 51, 51N, 59, 59N, 66, 67, 67N, 79, 810			
METERING	810, 86			

[illegible]

TECHNICAL TRANSFORMER DATA					
DESIGN	MANUFACT	TYPE	RATIO	TODE	REMARKS
-T1L1	ZELLSKO	GT12H	2500/1/1/1A	C1: cl. 0.2FS5 15VA	
-T1L2		GT12H	2500/1/1/1A	C2: cl. 1 15VA	
-T1L3		GT12H	2500/1/1/1A	C3: cl. 10P-10 15VA	
-T5L1	ZELLSKO	EYEB	$\frac{6.3}{\sqrt{3}} / \frac{0.1}{\sqrt{3}} / \frac{0.1}{3} \text{ KW}$	C1: 0.2 30VA W1	
-T5L2		EYEB		C1: 3P 100VA W3	
-T5L3		EYEB			
-F1L1	AEG	2A			HV FUSE
-F1L2	AEG	2A			
-F1L3	AEG	2A			
-C1L1	AREVA	IVIS			CAP. TAPPING
-C1L2	AREVA	IVIS			
-C1L3	AREVA	IVIS			
-T91-T91					Cabel Core Transf.

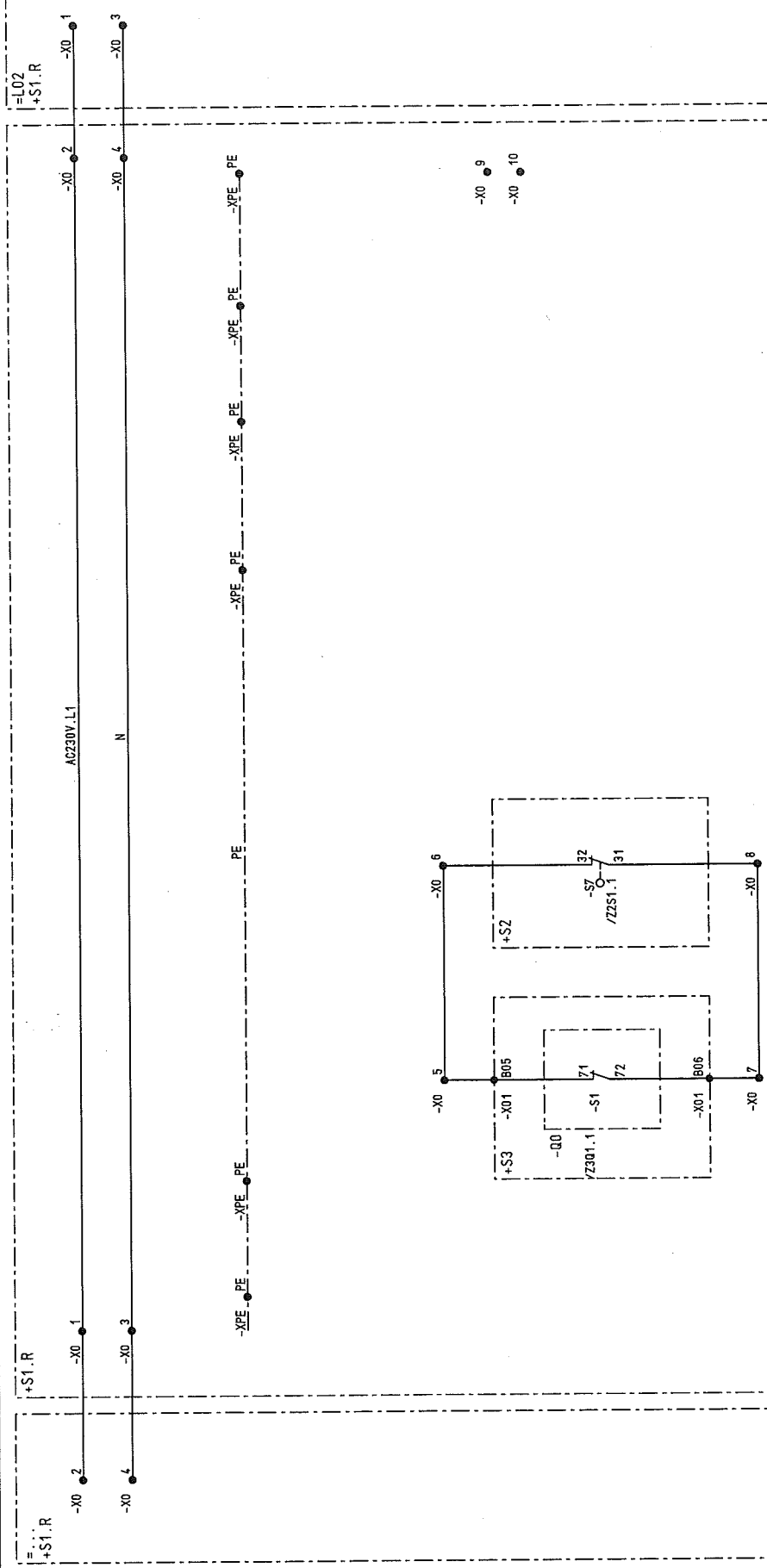
[illegible]

1		2		3		4		5		6		7		8	
CLIENT DOCUMENT NUMBER		RELEASE BY DOCUMENT NUMBER		VERSION STATUS		DOCUMENT IDENTIFICATION		SHEET		DESIGN					
						SORT MATCHING		ITEM NO.							
50.3023.01-A4-741-	103	D009781.01.601-3.AHA	01	02	03	A =L01	A01	1	COVER SHEET	01					
50.3023.01-A4-741-	103	D009781.01.601-3.AHA	01	02	03	A =L01	A02	2	CIRCUIT DIAGRAM	01					
50.3023.01-A4-741-	103	D009781.01.601-3.AHA	01	02	03	A =L01	B01	3	Inhaltssverzeichnis	01					
50.3023.01-A4-741-	103	D009781.01.601-3.AHA	01	02	03	A =L01	B02	4	Inhaltssverzeichnis	01					
50.3023.01-A4-741-	103	D009781.01.601-3.AHA	01	02	03	S =L01	D01	5	CIRCUIT DIAGRAM	01					
50.3023.01-A4-741-	103	D009781.01.601-3.AHA	01	02	03	S =L01	E01	6	CIRCUIT DIAGRAM	01					
50.3023.01-A4-741-	103	D009781.01.601-3.AHA	01	02	03	S =L01	L01	7	CIRCUIT DIAGRAM	01					
50.3023.01-A4-741-	103	D009781.01.601-3.AHA	01	02	03	S =L01	M01	8	CIRCUIT DIAGRAM	01					
50.3023.01-A4-741-	103	D009781.01.601-3.AHA	01	02	03	S =L01	N01	9	CIRCUIT DIAGRAM	01					
50.3023.01-A4-741-	103	D009781.01.601-3.AHA	01	02	03	S =L01	Q01	10	CIRCUIT DIAGRAM	01					
50.3023.01-A4-741-	103	D009781.01.601-3.AHA	01	02	03	S =L01	Q02	11	CIRCUIT DIAGRAM	01					
50.3023.01-A4-741-	103	D009781.01.601-3.AHA	01	02	03	S =L01	Q03	12	CIRCUIT DIAGRAM	01					
50.3023.01-A4-741-	103	D009781.01.601-3.AHA	01	02	03	S =L01	Q04	13	CIRCUIT DIAGRAM	01					
50.3023.01-A4-741-	103	D009781.01.601-3.AHA	01	02	03	S =L01	Q05	14	CIRCUIT DIAGRAM	01					
50.3023.01-A4-741-	103	D009781.01.601-3.AHA	01	02	03	S =L01	R01	15	CIRCUIT DIAGRAM	01					
50.3023.01-A4-741-	103	D009781.01.601-3.AHA	01	02	03	S =L01	S01	16	CIRCUIT DIAGRAM	01					
50.3023.01-A4-741-	103	D009781.01.601-3.AHA	01	02	03	S =L01	S02	17	CIRCUIT DIAGRAM	01					
50.3023.01-A4-741-	103	D009781.01.601-3.AHA	01	02	03	S =L01	T01	18	CIRCUIT DIAGRAM	01					
50.3023.01-A4-741-	103	D009781.01.601-3.AHA	01	02	03	S =L01	T02	19	CIRCUIT DIAGRAM	01					
50.3023.01-A4-741-	103	D009781.01.601-3.AHA	01	02	03	S =L01	V01	20	CIRCUIT DIAGRAM	01					
50.3023.01-A4-741-	103	D009781.01.601-3.AHA	01	02	03	S =L01	Z1F1	21	LIST OF EQUIPMENT	01					
50.3023.01-A4-741-	103	D009781.01.601-3.AHA	01	02	03	S =L01	Z1F2	22	LIST OF EQUIPMENT	01					
50.3023.01-A4-741-	103	D009781.01.601-3.AHA	01	02	03	S =L01	Z1F20	23	LIST OF EQUIPMENT	01					
50.3023.01-A4-741-	103	D009781.01.601-3.AHA	01	02	03	S =L01	Z1F21	24	LIST OF EQUIPMENT	01					
50.3023.01-A4-741-	103	D009781.01.601-3.AHA	01	02	03	S =L01	Z1H1	25	LIST OF EQUIPMENT	01					
50.3023.01-A4-741-	103	D009781.01.601-3.AHA	01	02	03	S =L01	Z1K1	26	LIST OF EQUIPMENT	01					
50.3023.01-A4-741-	103	D009781.01.601-3.AHA	01	02	03	S =L01	Z1P1	27	LIST OF EQUIPMENT	01					
50.3023.01-A4-741-	103	D009781.01.601-3.AHA	01	02	03	S =L01	Z1R1	28	LIST OF EQUIPMENT	01					
50.3023.01-A4-741-	103	D009781.01.601-3.AHA	01	02	03	S =L01	Z1S1	29	LIST OF EQUIPMENT	01					
50.3023.01-A4-741-	103	D009781.01.601-3.AHA	01	02	03	S =L01	Z1U1	30	LIST OF EQUIPMENT	01					
50.3023.01-A4-741-	103	D009781.01.601-3.AHA	01	02	03	S =L01	Z2C1	31	LIST OF EQUIPMENT	01					

1		2		3		4		5		6		7		8	
CLIENT DOCUMENT NUMBER		RELEASE BY DOCUMENT NUMBER		VERSION STATUS		DOCUMENT IDENTIFICATION		SHEET		DESIGN					
						SORT MATCHING		ITEM NO.							
50.3023.01-A4-741-103		D009781.01.601-3.AHA	01	02	03	S	=L01	Z2P1	32		LIST OF EQUIPMENT PANEL	01			
50.3023.01-A4-741-103		D009781.01.601-3.AHA	01	02	03	S	=L01	Z201	33		LIST OF EQUIPMENT PANEL	01			
50.3023.01-A4-741-103		D009781.01.601-3.AHA	01	02	03	S	=L01	Z2S1	34		LIST OF EQUIPMENT PANEL	01			
50.3023.01-A4-741-103		D009781.01.601-3.AHA	01	02	03	S	=L01	Z2T1	35		LIST OF EQUIPMENT PANEL	01			
50.3023.01-A4-741-103		D009781.01.601-3.AHA	01	02	03	S	=L01	Z2Y1	36		LIST OF EQUIPMENT PANEL	01			
50.3023.01-A4-741-103		D009781.01.601-3.AHA	01	02	03	S	=L01	Z3B1	37		LIST OF EQUIPMENT PANEL	01			
50.3023.01-A4-741-103		D009781.01.601-3.AHA	01	02	03	S	=L01	Z302	38		LIST OF EQUIPMENT PANEL	01			
50.3023.01-A4-741-103		D009781.01.601-3.AHA	01	02	03	V	=L01 +S1.R	K01	39		TERMINAL DIAGRAM	01			
50.3023.01-A4-741-103		D009781.01.601-3.AHA	01	02	03	V	=L01 +S1.R	K10	40		TERMINAL DIAGRAM	01			
50.3023.01-A4-741-103		D009781.01.601-3.AHA	01	02	03	V	=L01 +S1.R	K11	41		TERMINAL DIAGRAM	01			
50.3023.01-A4-741-103		D009781.01.601-3.AHA	01	02	03	V	=L01 +S1.R	K30	42		TERMINAL DIAGRAM	01			
50.3023.01-A4-741-103		D009781.01.601-3.AHA	01	02	03	V	=L01 +S1.R	K40	43		TERMINAL DIAGRAM	01			
50.3023.01-A4-741-103		D009781.01.601-3.AHA	01	02	03	V	=L01 +S1.R	K50	44		TERMINAL DIAGRAM	01			
50.3023.01-A4-741-103		D009781.01.601-3.AHA	01	02	03	V	=L01 +S1.R	K51	45		TERMINAL DIAGRAM	01			
50.3023.01-A4-741-103		D009781.01.601-3.AHA	01	02	03	V	=L01 +S1.R	K60	46		TERMINAL DIAGRAM	01			
50.3023.01-A4-741-103		D009781.01.601-3.AHA	01	02	03	V	=L01 +S1.R	K80	47		TERMINAL DIAGRAM	01			
50.3023.01-A4-741-103		D009781.01.601-3.AHA	01	02	03	V	=L01 +S1.R	K81	48		TERMINAL DIAGRAM	01			
50.3023.01-A4-741-103		D009781.01.601-3.AHA	01	02	03	V	=L01 +S1.R	K82	49		TERMINAL DIAGRAM	01			
50.3023.01-A4-741-103		D009781.01.601-3.AHA	01	02	03	V	=L01 +S1.R	K90	50		TERMINAL DIAGRAM	01			
50.3023.01-A4-741-103		D009781.01.601-3.AHA	01	02	03	V	=L01 +S1.R	KPE	51		TERMINAL DIAGRAM	01			
50.3023.01-A4-741-103		D009781.01.601-3.AHA	01	02	03	V	=L01 +S1.R	Q10	52		CROSS CONNECT. LIST	01			
50.3023.01-A4-741-103		D009781.01.601-3.AHA	01	02	03	V	=L01 +S1.R	Q11	53		CROSS CONNECT. LIST	01			
50.3023.01-A4-741-103		D009781.01.601-3.AHA	01	02	03	V	=L01 +S1.R	S01	54		PLUG DIAGRAM	01			
50.3023.01-A4-741-103		D009781.01.601-3.AHA	01	02	03	V	=L01 +S1.R	Q15	55		CROSS CONNECT. LIST	01			
50.3023.01-A4-741-103		D009781.01.601-3.AHA	01	02	03	V	=L01 +S1.T	Q20	56		CROSS CONNECT. LIST	01			
50.3023.01-A4-741-103		D009781.01.601-3.AHA	01	02	03	V	=L01 +S2	Q30	57		CROSS CONNECT. LIST	01			
50.3023.01-A4-741-103		D009781.01.601-3.AHA	01	02	03	V	=L01 +S3	Q31	58		CROSS CONNECT. LIST	01			
50.3023.01-A4-741-103		D009781.01.601-3.AHA	01	02	03	V	=L01 +S3	Q32	59		CROSS CONNECT. LIST	01			
50.3023.01-A4-741-103		D009781.01.601-3.AHA	01	02	03	V	=L01 +S3	S01	60		PLUG DIAGRAM	01			

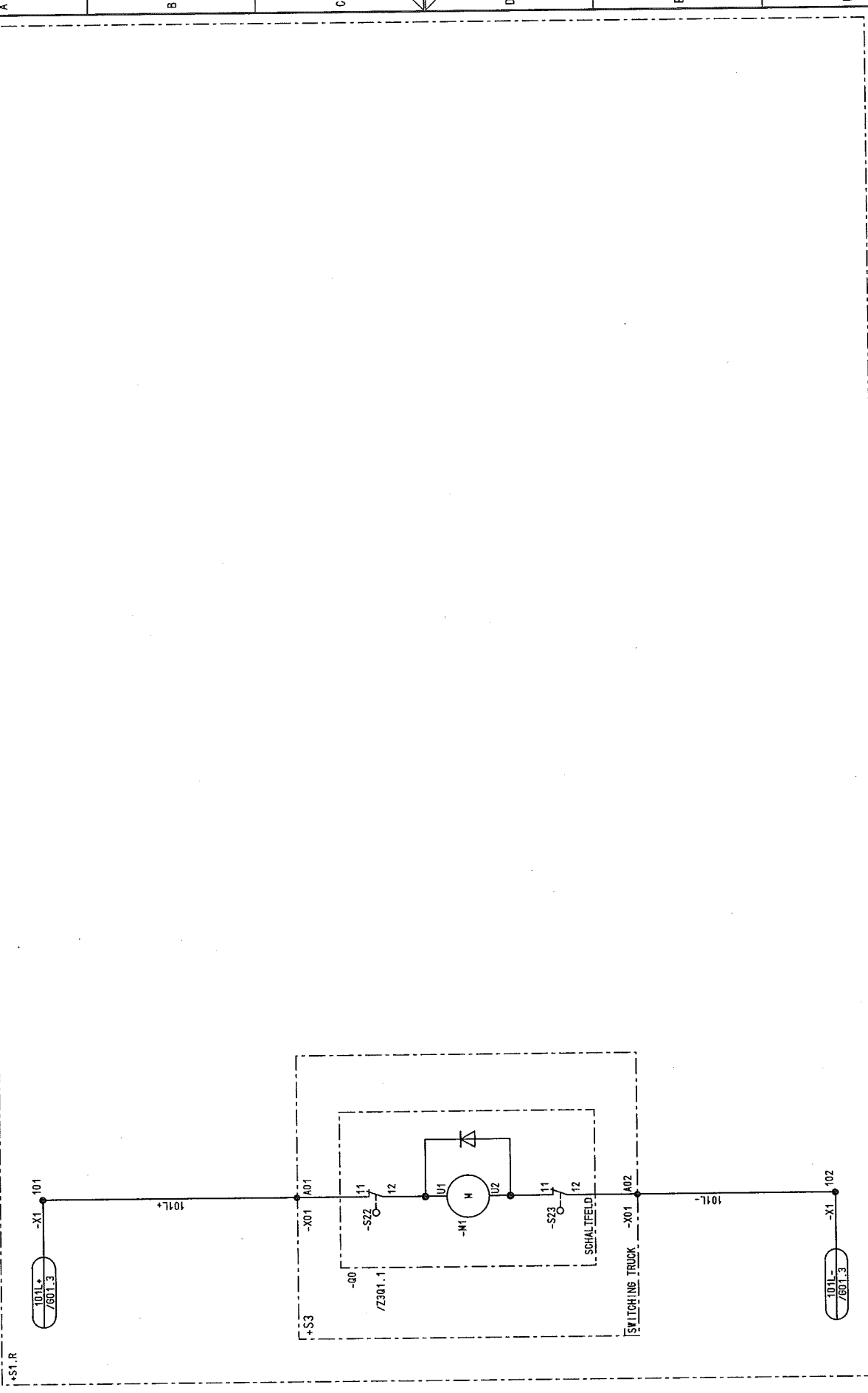
Copyright as per DIN 34 to be observed!

03	AS BUILT	5.12.2005	HD	Date	06.06.2005	US STEEL KOSICE/SLOVAKIA		CIRCUIT DIAGRAM	50_3023_01-44-741-103	S=L01	/ 001
02	FAC1.-REV.	30.10.2005	BL	Drawn	Hönlícke	50_3023_01		AC-DISTRIBUTION			
01	Approval	30.06.2005	Hoe	Check	Grahmann	SUBSTATION T81		PANEL	Type: 01 INCOMING FEEDER		Sheet 5 60SH.
NO.	Alteration	Date	Name	Std.	iss.for	iss.by:		01	D009781.01..601-3.AHA		8
					Orig.:			Δ	7	6	





03	AS BUILT	15.12.2006	AD	Date	06.06.2005	US STEEL KOSTICE/SLOVAKIA	CIRCUIT DIAGRAM	MOTOR DRIVE	50.3023.01-A4-741403	S=L01	8
02	FACT.-REV.	30.10.2005	BL	Date	30.10.2005	Drawn Hönigke	CIRCUIT-BREAKER	MOTOR DRIVE	50.3023.01	/L01	7
01	Approval	30.06.2005	Hoe	Date	30.06.2005	Check Grahmann	PANEL	MOTOR DRIVE	D009781.01.601-3.AHA	Sheet 7	6
NO.	Alteration	Date	Named	Std.	Orig.	Iss. for	Iss. by:	Iss. for	INCOMING FEEDER	Typ: 01	8

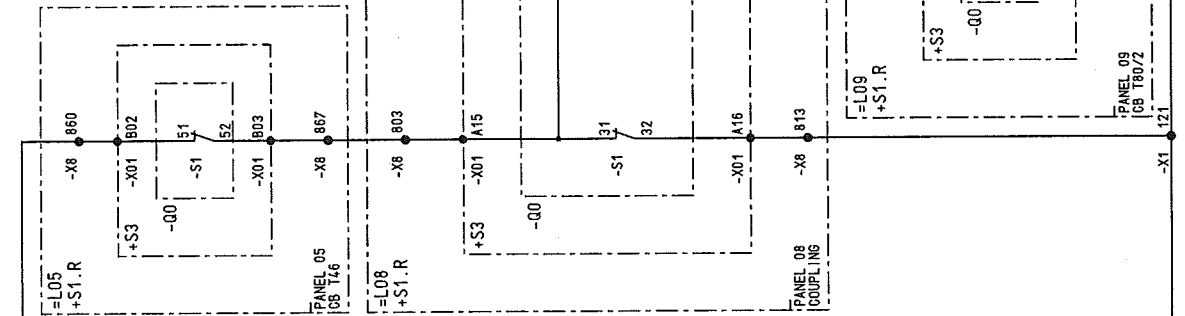




03	AS BUILT	5.12.2005	AD	Date	06.06.2005	US STEEL KOSICE/SLOVAKIA	 <b>AREVA</b>	CIRCUIT DIAGRAM		50.3023.01-A4-741-103		S=L01	/ M01
02	FACT.-REV.	30.10.2005	BL	Drawn	Hänicke	50.3023.01		CONTROL					
01	Approval	30.06.2005	lho	Checked	Grohmann	SUBSTATION T81		PANEL		Typ: 01		Sheet 8	
NO.	Alteration	Date	Name	Sig.	Orig.:	Iss. for		01		INCOMING FEEDER		D009781.01.601-3.AHA	
<div style="display: flex; justify-content: space-between;"><span>1</span><span>2</span><span>3</span><span>4</span><span>5</span><span>6</span><span>7</span><span>8</span></div>													



INTERLOCK  
/NO1.7



INTERLOCK  
/NO1.7

03	AS BUILT	5.12.2005	AD	Date	106.06.2005	US STEEL KOSICE/SLOVAKIA	CIRCUIT DIAGRAM	50.3023.01-A4-741-403	S=L01	/NO1
02	FACT -REV.	30.10.2005	BL	Drawn	Hahncke	50.3023.01	INTERLOCK			Sheet 9
01	Approval	30.06.2005	Hae	Checked	Grahamm	SUBSTATION T81	PANEL			60Sh.
NO.	Alteration	Date	Name	Std.	Iss. for	Iss. by:	01	INCOMING FEEDER	D009781.01.601-3.AHA	8

D0978101 Copyright as per DIN 34 to be observed!

HJ015ME  
L01  
ADAM

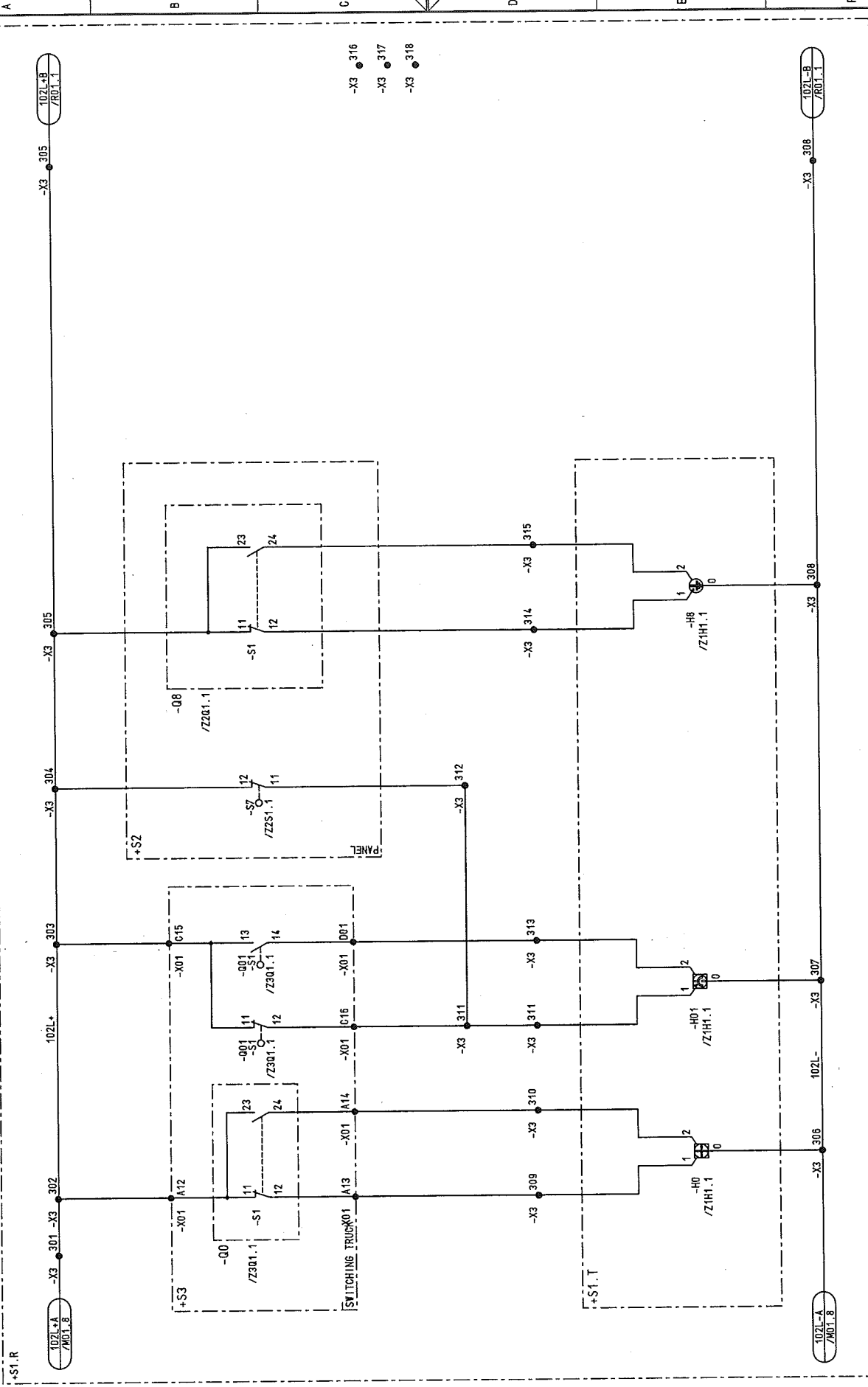
Copyright as per DIN 34 to be observed!

HJ0115ME  
001  
=L01  
ADAM

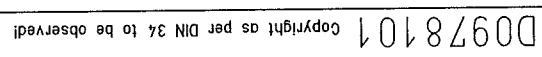
D00978101

RELAY\_BOX

03	AS BUILT	5.12.2006	AD	Date	06.06.2005	US STEEL KOSTICE/SLOVAKIA	CIRCUIT DIAGRAM	50.3023.01-AL-741403	S=L01	/001
02	FACT.-REV.	30.10.2005	BL	Drawn	Hänske	50.3023.01	POSITION INDICA.			Sheet 10
01	Approval	30.06.2005	Hoe	Checked	Gröbmann	SUBSTATION T81	PANEL	D009781.01.601-3.AHA	Typ: 01	60SH
NO.	Alteration	Date	Name	Std.	Iss. for	Iss. by:	01	INGOMING FEEDER	7	8



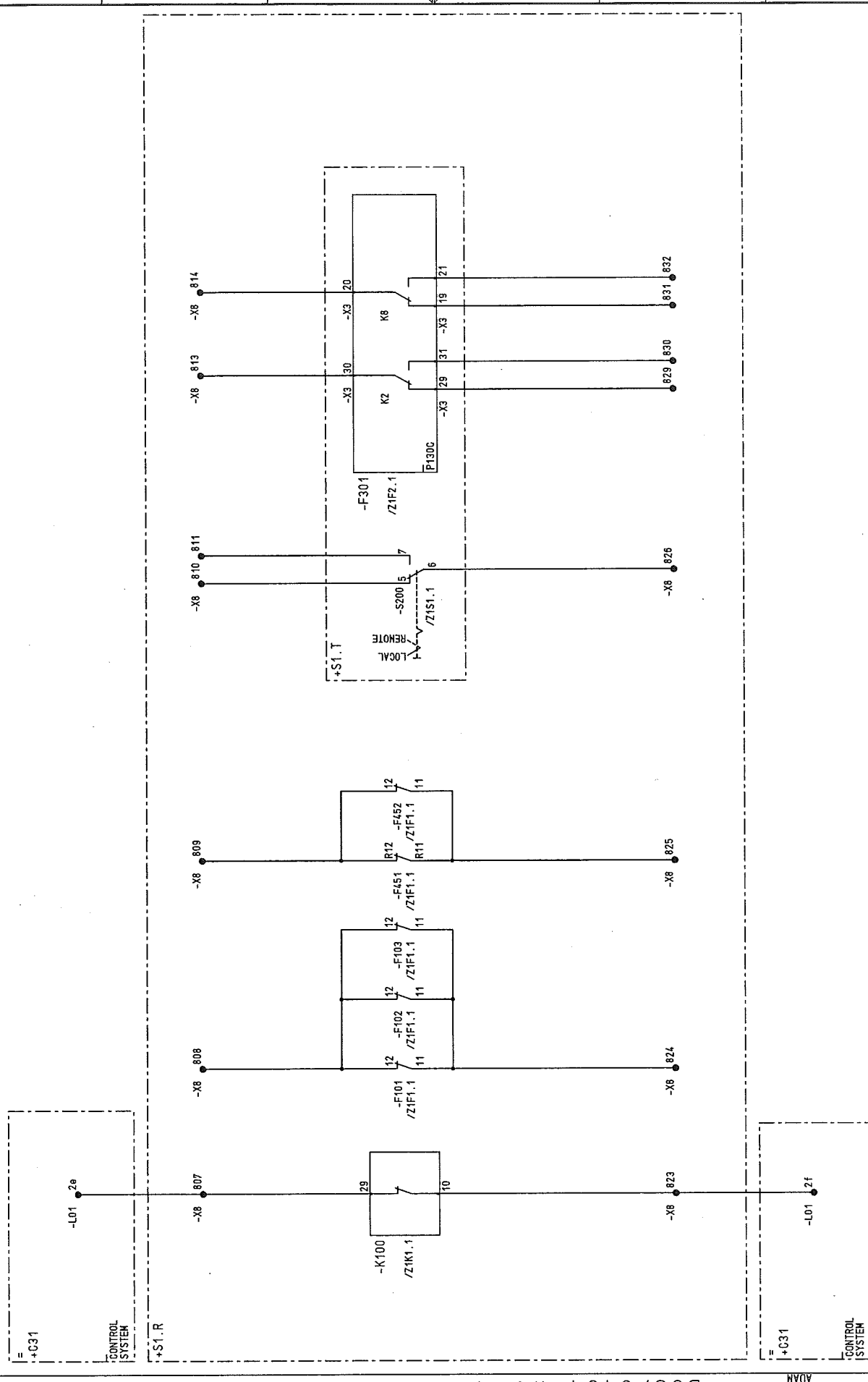
1	2	3	4	5	6	7	8
CIRCUIT-BREAKER							
OFF	ON	TRUCK POS.	CIRCUIT BREAKER WITHDRAWN	EARTHING SWITCH			
4LAUFT	4LAUFT	TEST. POS.	OR NOT IN SERVICE	OFF	ON		
POSITION INDICA.							



**AREVA**

1 2 3 4 5 6 7 8

BREAKER TRIPPING M.C.B. TRIPPED  
 DOUBLE THROW SWITCH  
 LOCAL / REMOTE  
 PROTECTION  
 START FAULT



NO.		Alteration	Date	Name/Std.	Iss. for	Iss. by:	1		2	3	4	5	6	7	8							
03	AS BUILT	5.12.2005	AD	Date	05.06.2005	US STEEL KOSTICE/SLOVAKIA	A									CIRCUIT DIAGRAM						
02	FACT. -REV.	30.10.2005	BL	Drawn	Hahnlecke	50.3023.01	AREVA									INTERFACE						
01	Approval	30.06.2005	Has	Check	Grohmann	SUBSTATION T81	PANEL									Type: 01						
NO.		Alteration	Date	Name/Std.	Iss. for	Orig.:	01									INCOMING FEEDER			Sheet 12		60Sh.	
							50.3023.01-A4-741-403									S1=L01			/ 003		D009781.01.601-3.AHA	

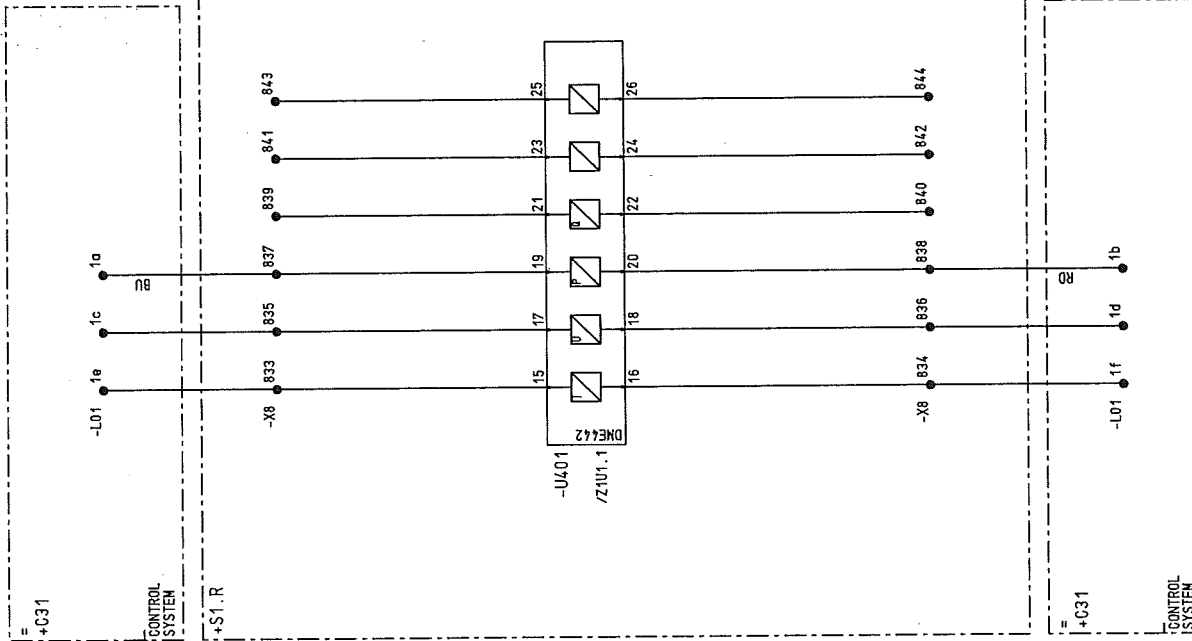
D00978101 Copyright as per DIN 34 to be observed!

07.12.2006  
H0115ME  
003  
ADAM

00978101 Copyright as per DIN 34 to be observed

07.12.2006  
HJ015ME  
L001  
ADAM

03	AS BUILT	5.12.2006	AD	Date	06.06.2005	US STEEL KOSICE/SLOVAKIA	50.3023.01	50.3023.01	50.3023.01	50.3023.01-A4-741-403	S	=L01	/ 004	Sheet13	60Sh.
02	FACT. -REV.	30.10.2005	BL	Drawn	Hänicke										
01	Approval	30.06.2005	Hae	Checked	Grahamm	SUBSTATION T81									
NO.	Alteration	Date	Name	Std.	2	1	Iss. for	Iss. by:	01	INCOMING FEEDER	D009781.01.601-3.AHA	7	6	8	



CIRCUIT DIAGRAM  
INTERFACE  
PANEL

AREVA

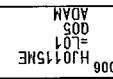
US STEEL KOSICE/SLOVAKIA

50.3023.01  
SUBSTATION T81

50.3023.01  
Drawn Hänicke

50.3023.01  
Checked Grahamm

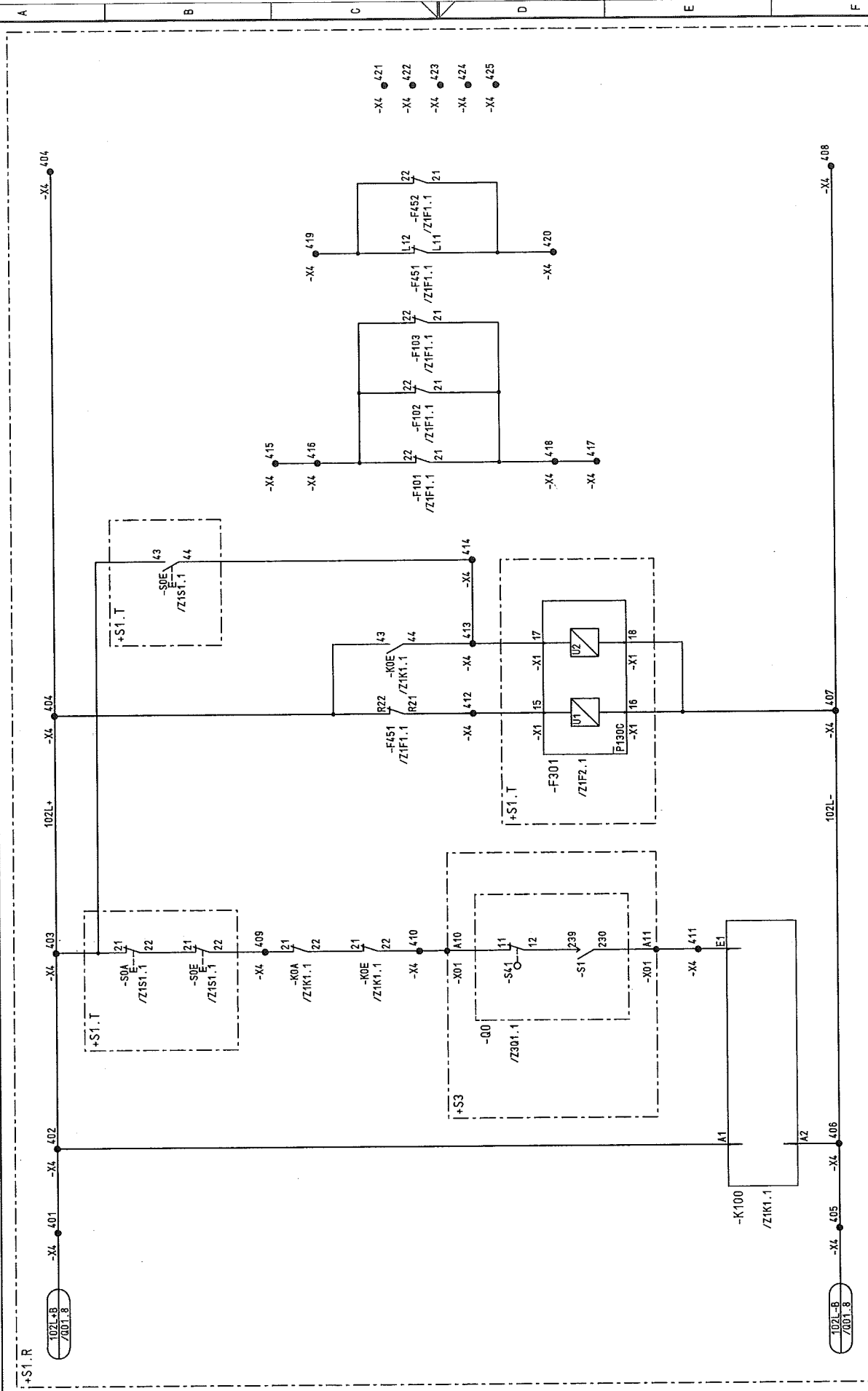
50.3023.01  
Approval



NO.	1	2	3	4	5	6	7	8
AS BUILT	5.12.2005	AD	Date	05.06.2005	US STEEL KOSICE/SLOVAKIA	CIRCUIT DIAGRAM		
FACT - REV.	30.10.2005	BL	Drawn	Hönlícke	50_3023_01	SPARE CONTACTS		
Approval	30.06.2005	Hoe	Checked	Grahmann	SUBSTATION T81	PANEL		
Alteration	Date	Name	Std.	Iss. for	Iss. by:	01		
				Orig.:		01		
						INCOMING FEEDER		
						D009781.01.601-3.AHA		
						60Sh.		
						S=L01		
						50_3023_01-AL-741403		
						/ 005		
						Sheet 14		
						60Sh.		

D00978101 Copyright as per DIN 34 to be observed!

07.12.2006  
H4015ME  
R01  
ADAM

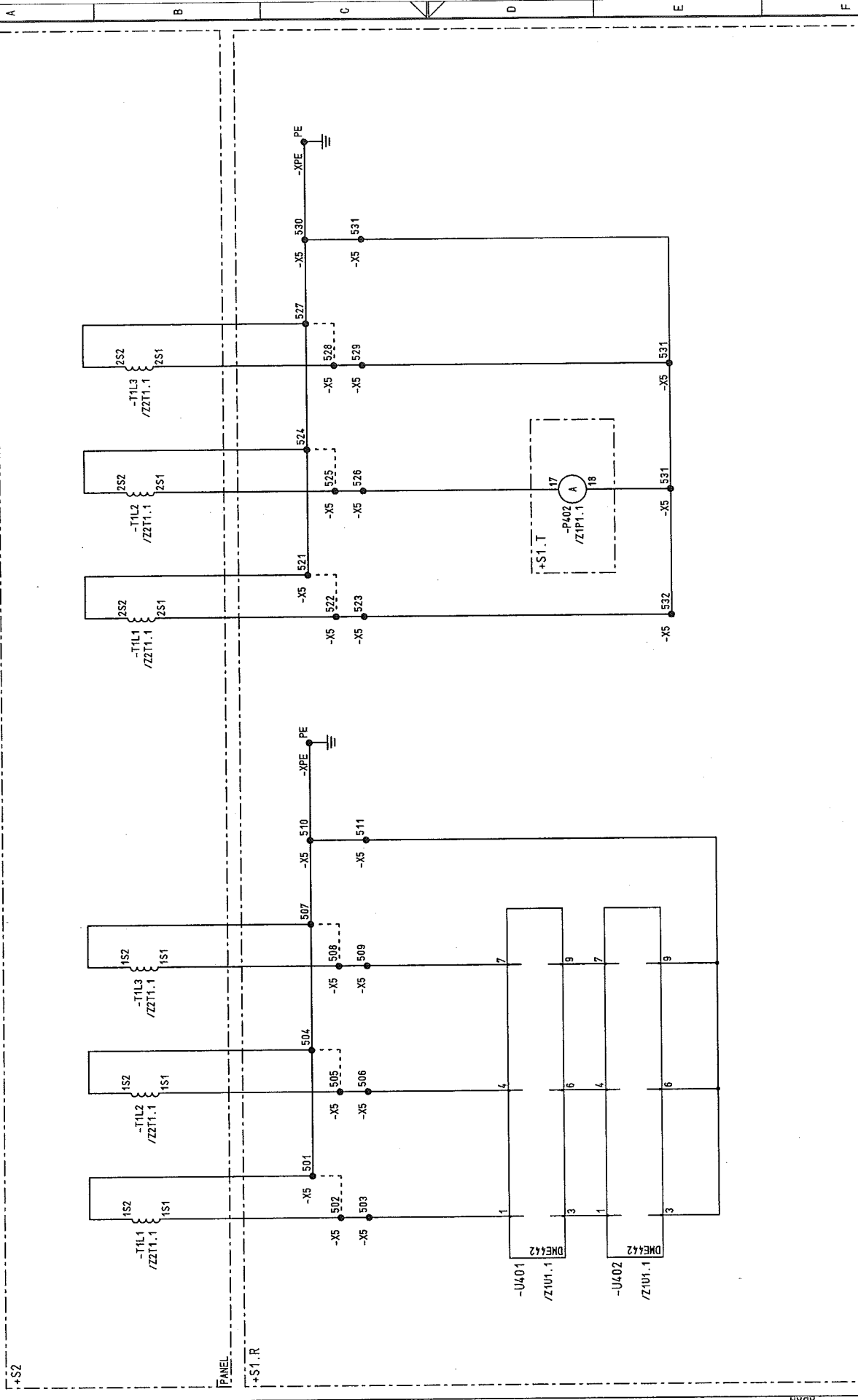


03		AS BUILT	5.12.2005	AD	Date	06.06.2005	US STEEL KOSTICE/SLOVAKIA	CIRCUIT DIAGRAM		50.3023.01-A4-741-403		S1=L01		/R01	
02		FACT.-REV.	30.10.2005	BL	Drawn	Hahncke	50.3023.01	SIGNALING		Typ: 01		D009781.01.601-3.AHA		Sheet 15	
01		Approval	30.06.2005	He	Check	Grahamm	SUBSTATION T81	PANEL		INCOMING FEEDER		60Sh.		8	
NO.		Alteration	Date	Name	Std.	Iss. by:	Iss. for:	01		6		7		8	

CURRENT

METERING

L1 L2 L3 N

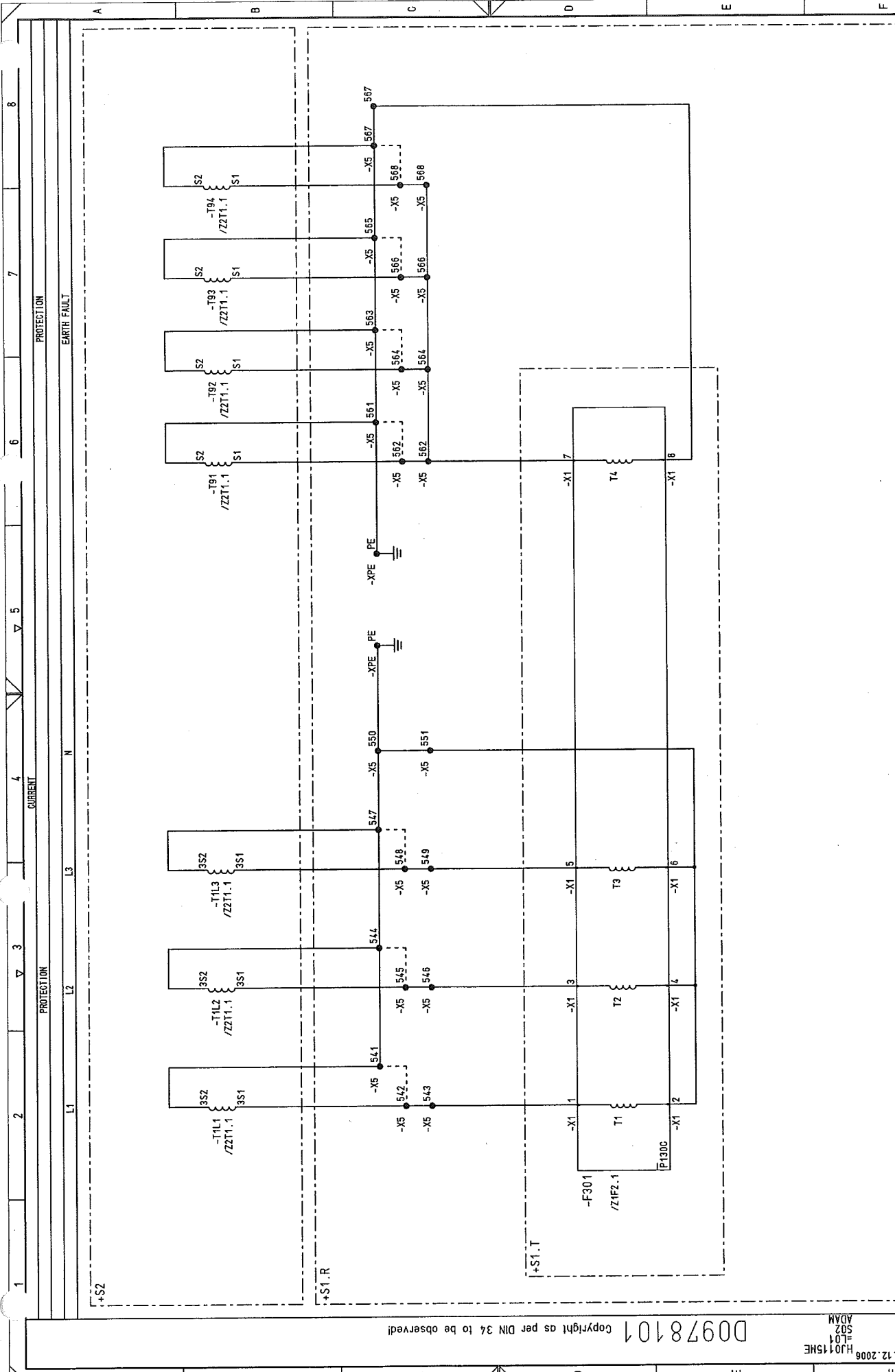


03 AS BUILT		5.12.2006	AD	Date	10.06.2005	US STEEL KOSICE/SLOVAKIA	CIRCUIT DIAGRAM		50.3023.01-A4-741-403	S	=L01	/S01	
02 FACT - REV.		30.10.2005	BL	Drawn/Héhicke	50.3023.01		CURR. TRANS.					/S01	
01 Approval		30.06.2005	Ree	Check/Grahamm	SUBSTATION T81		PANEL					Sheet 16	
Alteration		Date	Named/Std.	Iss. for	Iss. by:		01					605h	
							INCOMING FEEDER		D009781.01.601-3.AHA			8	

D00978101 Copyright as per DIN 34 to be observed!

07.12.2006  
H10115HE  
S01  
ADM

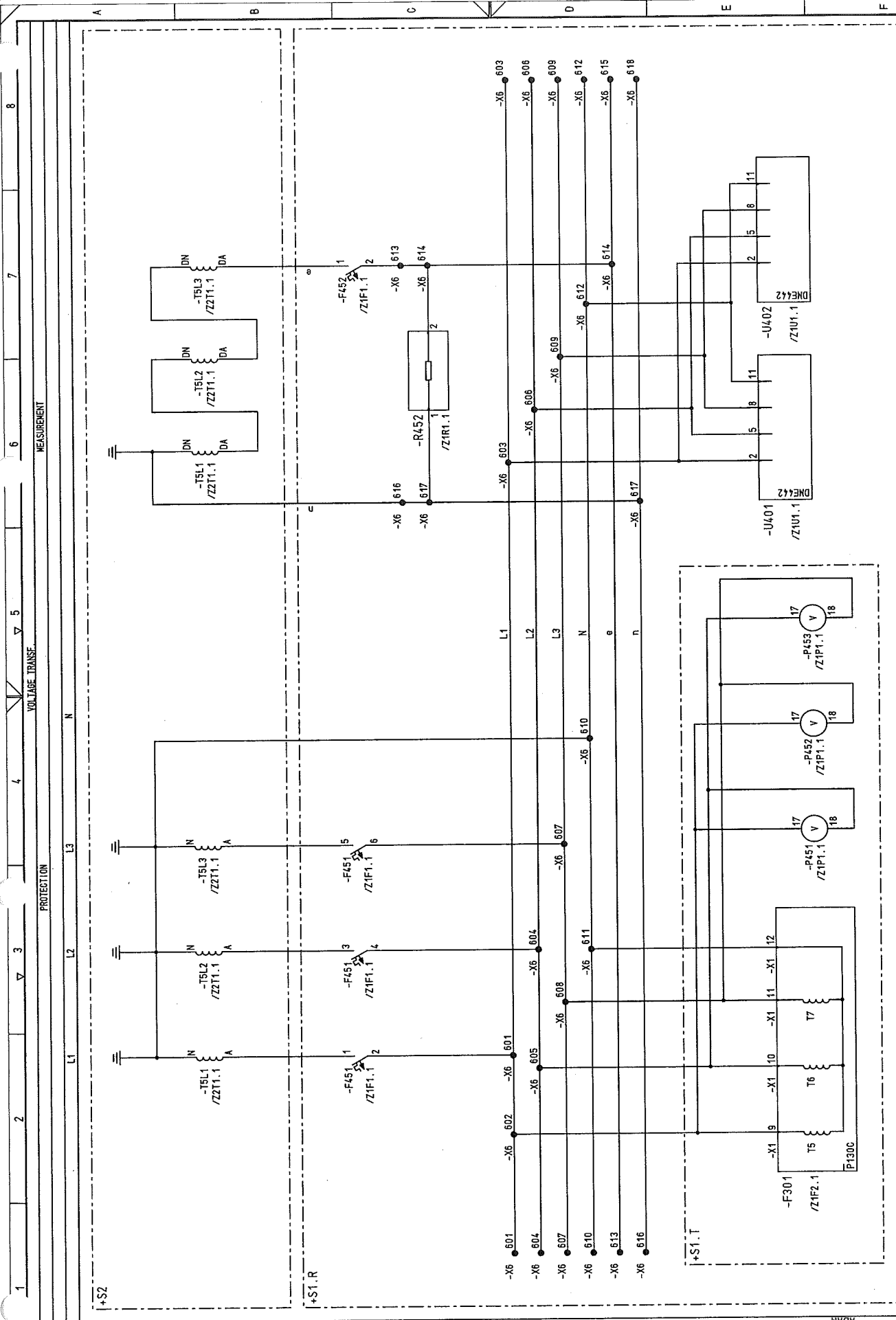




03		AS BUILT	5.12.2006	AD	US STEEL KOSICE/SLOVAKIA	CIRCUIT DIAGRAM		50.3023.01-A4-741-403	S	=L01	/ S02	
02		FACT - REV.	30.10.2005	BL	Drawn Hönigke	CURR. TRANS.					Sheet 17	
01		Approval	30.08.2005	Hoe	Check Grahmann	PANEL					60 Sh.	
NO.		Alteration	Date	Name	Std.	Iss. for					D009781.01.601-3.AHA	
						Iss. by:					INCOMING FEEDER	
											7	
											8	

D0978101 Copyright as per DIN 34 to be observed!

07.12.2006  
HJ015ME  
L01  
ADAM



										50.3023.01-44-741-403										S=L01									
										CIRCUIT DIAGRAM																			
										VOLTAGE TRANSF.																			
										PANEL																			
										01										Typ: 01									
										INCOMING FEEDER										D009781.01.601-3.AHA									
																				Sheet 18									
																				60Sh.									
																				8									
																				7									
																				6									
																				5									
																				4									
																				3									
																				2									
																				1									

Copyright as per DIN 34 to be observed

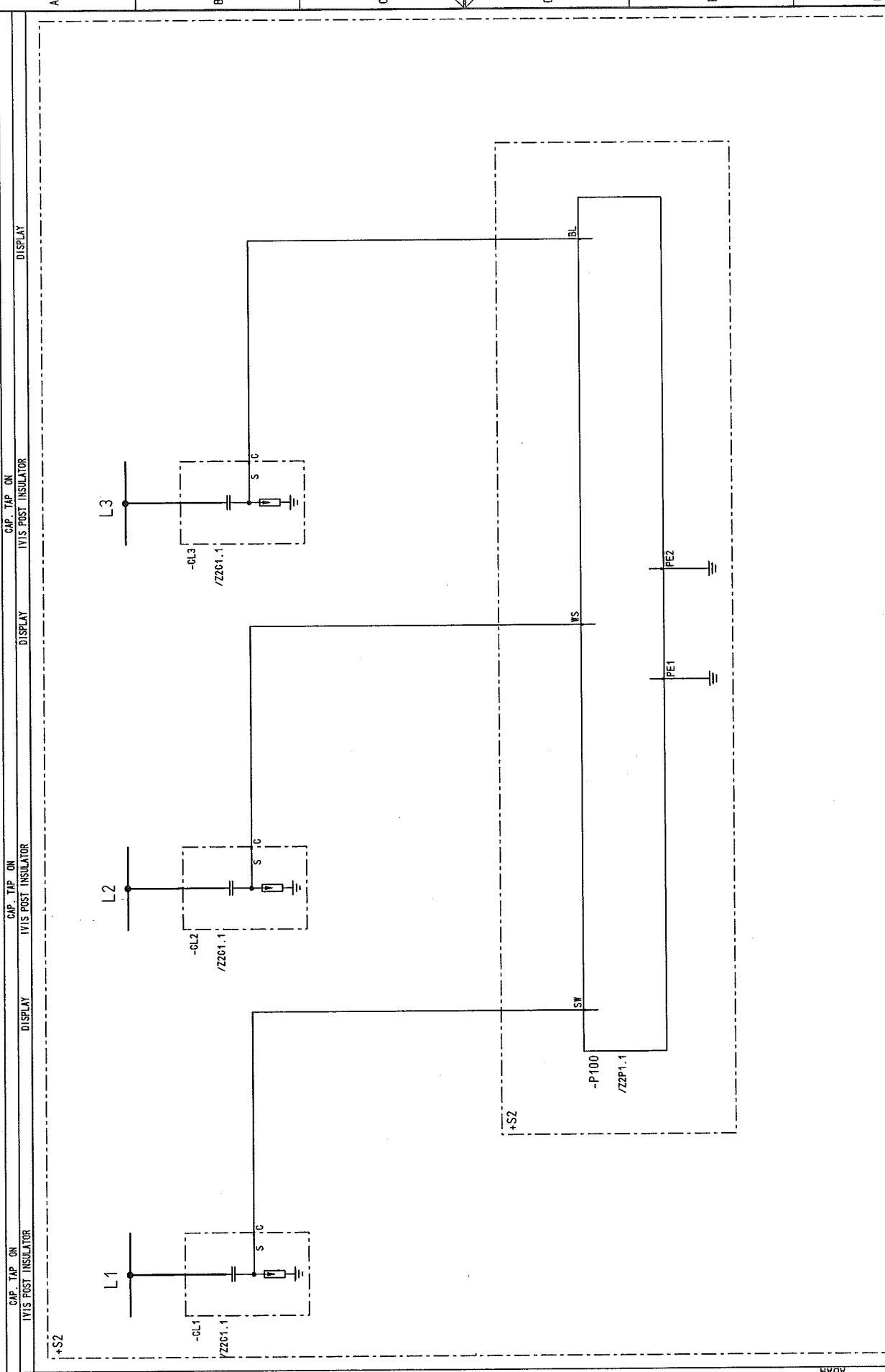
07.12.2006  
H1015ME  
L01  
ADM

D00978101

D0978101 Copyright as per DIN 34 to be observed

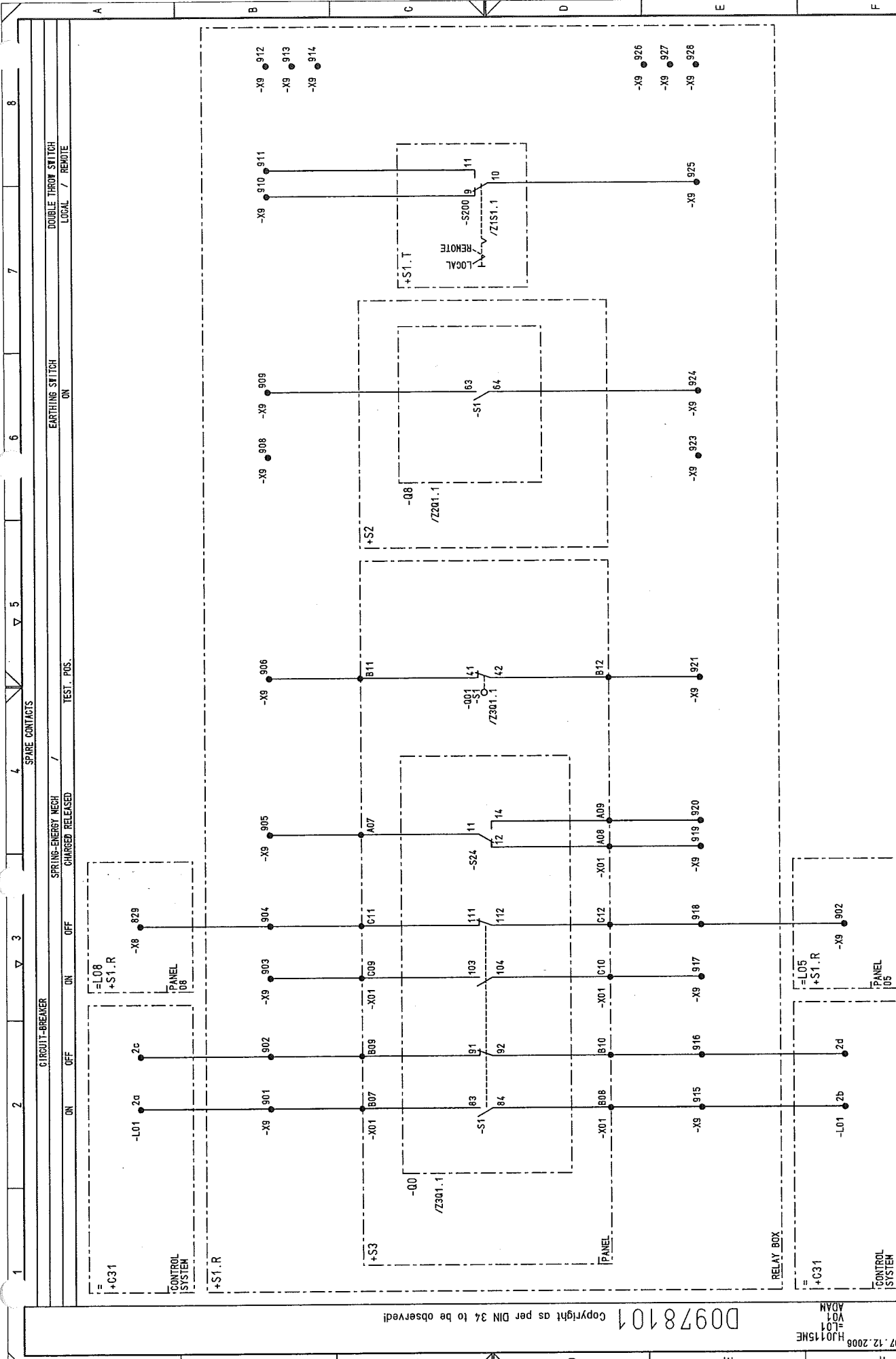
H3015ME  
102  
ADAM

03	AS BUILT	15.12.2005	AD	Date	06.06.2005	US STEEL KOSICE/SLOVAKIA	CIRCUIT DIAGRAM	50.3023.01-A4-741-403	S=L01	8
02	FACT -REV.	30.10.2005	BL	Drawn	Hönicke	50.3023.01	IVIS			7
01	Approval	30.06.2005	Hoe	Checked	Grohmann	SUBSTATION T81	PANEL			6
NO.	Alteration	Date	Name	Std.	Iss. for	Orig.	Iss. by:			5
										4
										3
										2
										1



1	2	3	4	5	6	7	8
---	---	---	---	---	---	---	---

CAP. TAP ON CAP. TAP ON CAP. TAP ON  
IVIS POST INSULATOR IVIS POST INSULATOR IVIS POST INSULATOR  
DISPLAY DISPLAY DISPLAY



07.12.2008		HJ015ME		ADAM		D0978101		Copyright as per DIN 34 to be observed!	
03	AS BUILT	5.12.2005	AD	Date	106.06.2005	US STEEL KOSTICE/SLOVAKIA			CIRCUIT DIAGRAM
02	FACT -REV.	30.10.2005	BL	Drawn	Hönlcke	50.3023.01			SPARE CONTACTS
01	Approval	30.06.2005	Hoe	Check	Grohmann	SUBSTATION T81			PANEL
NO.	Alteration	Date	Name	Std.	Iss. for	Iss. by:	1	4	5
						50.3023.01-A4-741403	S1	-L01	/ V01
						Typ: 01	D09781.01.601-3.AHA		
						INCOMING FEEDER			Sheet 20
									60Sh.

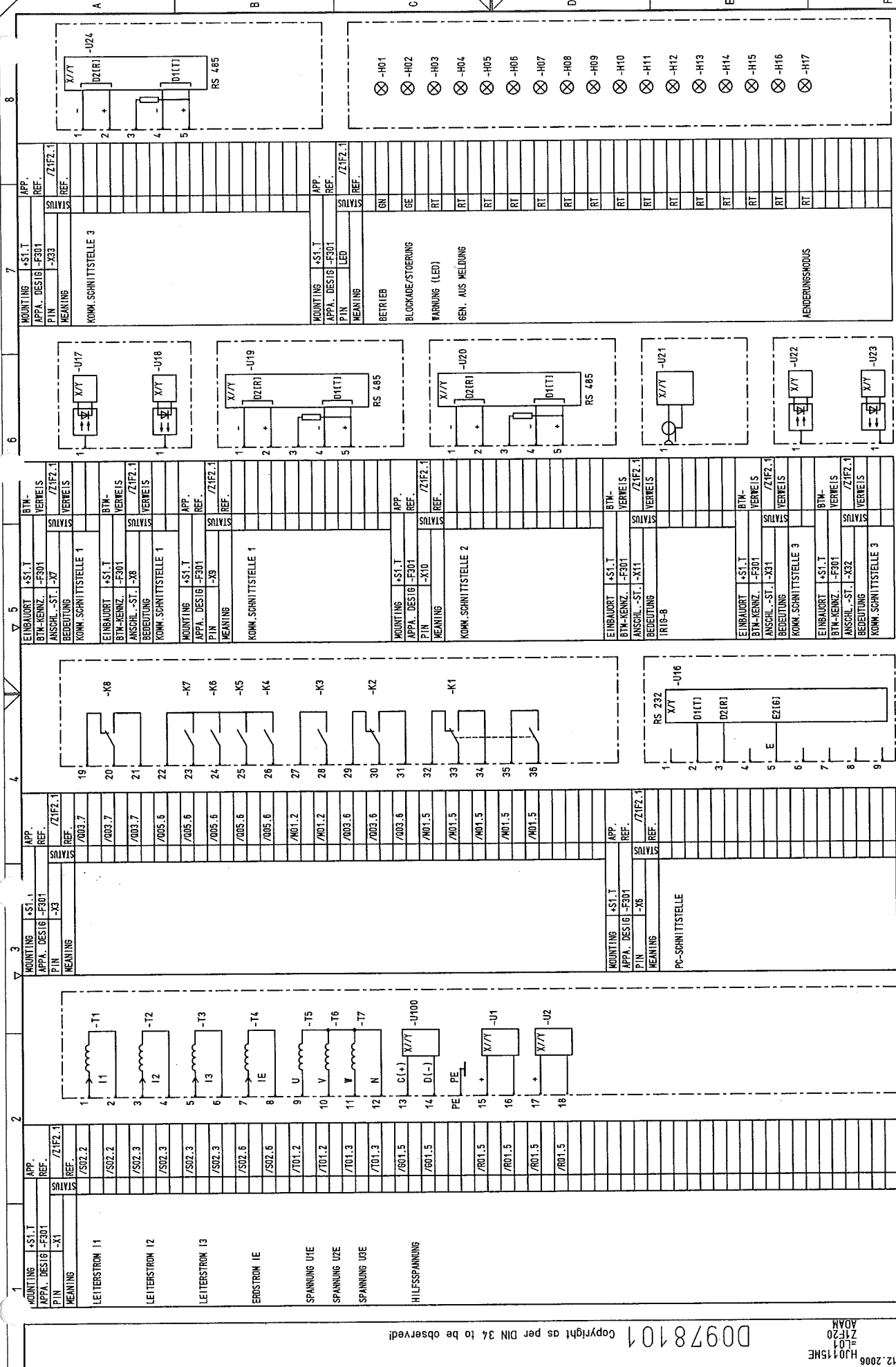
1		2		3		4		5		6		7		8	
1		M.C.B.		GE POWER CONTROLS		Type:EP61 C6									
AUXILIARY SWITCH		HH		Manuf. : 566516		Ord.No. : 566516									
1		RATED CURRENT : 6A		CHARACTERISTIC : C											
1		AUXILIARY SWITCH		CB SH/HH-R		Ordering number : 672570									
Application		Settings		Location		Item designation									
VOLT. TRANSF.		e-n WINDING		+S1.R		-F452									
2		M.C.B.		GE POWER CONTROLS		Type:EP102 UC B6									
AUXILIARY SWITCH		HH		Manuf. : 566311		Ord.No. : 566311									
1		RATED CURRENT : 6A		CHARACTERISTIC : B											
1		AUXILIARY SWITCH		CB SH/HH-R		Ordering number : 672570									
Application		Settings		Location		Item designation									
CONTROL		+S1.R		-F102											
PROTECTION		+S1.R		-F103											
3		M.C.B.		GE POWER CONTROLS		Type:EP102 UC C0.5									
AUXILIARY SWITCH		HH		Manuf. : 566336		Ord.No. : 566336									
1		RATED CURRENT : 0.5A		CHARACTERISTIC : C											
1		AUXILIARY SWITCH		CB SH/HH-R		Ordering number : 672570									
Application		Settings		Location		Item designation									
MOTOR DRIVE		+S1.R		-F101											
4		M.C.B.		GE POWER CONTROLS		Type:EP63 C3									
AUXILIARY SWITCH		HH		Manuf. : 566594		Ord.No. : 566594									
1		RATED CURRENT : 3A		CHARACTERISTIC : C											
1		AUXILIARY SWITCH		CB SH/HH-R		Ordering number : 672570									
1		AUXILIARY SWITCH		CB SH/HH-L		Ordering number : 672571									
Application		Settings		Location		Item designation									
VOLT. TRANSF.		MEASUREMENT		+S1.R		-F451									
5		AS BUILT		5.12.2005		AD		Date		06.06.2005		US STEEL KOSICE/SLOVAKIA		50.3023.01	
6		FAGT.-REV.		30.10.2005		BL		Drawn		Hänilcke		50.3023.01		50.3023.01	
7		Approval		30.06.2005		Hoe		Check		Grahmann		SUBSTATION T81		50.3023.01	
8		Alteration		Date		Name		Std.		Iss.by:		Orig.:		50.3023.01	
9		NO.		1		2		3		4		5		6	
10		Copyright as per DIN 34 to be observed!		D0978101		07.12.2006		H10115ME		ZIF1		ADAM		H10115ME	

1	2	3	4	5	6	7	8
DESCRIPTION, DESIGN, TECHNICAL DATA APPLICATION	MANUFACTURER, TYPE, ORDERING DATA SETTINGS	APPARATUS SYMBOL, DIAGRAM REFERENCE TO INDIVIDUAL TREATMENT (CIRCUIT DIAGRAM, SHEET NO., CIRCUIT NO.)	WITH REFERENCES TO DETAILS				
1	MONIT. - PROTECTION MOTOR PROTECTION AUXILIARY VOLTAGE : DC24-60V/DC110-250V/ Technical components per device	Manuf. : AREVA Ord. No. : NIGOM P130-98903020-401-301 Type: P130C IN=AC 1/5 UN=AC 50-130 fN=50/60Hz : AC100-230V Ordering number	Cross references to the item groups in the circuit diagram Cross references to a separate, more detailed documenton Cross references to grafical layout incl. single pins				
Application	Settings	Location	Item designation				
/N01.2	/N01.4	/N01.5	/N01.6	/N01.7	/N01.8	/N01.9	/N01.10
/N01.11	/N01.12	/N01.13	/N01.14	/N01.15	/N01.16	/N01.17	/N01.18
/N01.19	/N01.20	/N01.21	/N01.22	/N01.23	/N01.24	/N01.25	/N01.26
/N01.27	/N01.28	/N01.29	/N01.30	/N01.31	/N01.32	/N01.33	/N01.34
/N01.35	/N01.36	/N01.37	/N01.38	/N01.39	/N01.40	/N01.41	/N01.42
/N01.43	/N01.44	/N01.45	/N01.46	/N01.47	/N01.48	/N01.49	/N01.50
/N01.51	/N01.52	/N01.53	/N01.54	/N01.55	/N01.56	/N01.57	/N01.58
/N01.59	/N01.60	/N01.61	/N01.62	/N01.63	/N01.64	/N01.65	/N01.66
/N01.67	/N01.68	/N01.69	/N01.70	/N01.71	/N01.72	/N01.73	/N01.74
/N01.75	/N01.76	/N01.77	/N01.78	/N01.79	/N01.80	/N01.81	/N01.82
/N01.83	/N01.84	/N01.85	/N01.86	/N01.87	/N01.88	/N01.89	/N01.90
/N01.91	/N01.92	/N01.93	/N01.94	/N01.95	/N01.96	/N01.97	/N01.98
/N01.99	/N01.100	/N01.101	/N01.102	/N01.103	/N01.104	/N01.105	/N01.106
/N01.107	/N01.108	/N01.109	/N01.110	/N01.111	/N01.112	/N01.113	/N01.114
/N01.115	/N01.116	/N01.117	/N01.118	/N01.119	/N01.120	/N01.121	/N01.122
/N01.123	/N01.124	/N01.125	/N01.126	/N01.127	/N01.128	/N01.129	/N01.130
/N01.131	/N01.132	/N01.133	/N01.134	/N01.135	/N01.136	/N01.137	/N01.138
/N01.139	/N01.140	/N01.141	/N01.142	/N01.143	/N01.144	/N01.145	/N01.146
/N01.147	/N01.148	/N01.149	/N01.150	/N01.151	/N01.152	/N01.153	/N01.154
/N01.155	/N01.156	/N01.157	/N01.158	/N01.159	/N01.160	/N01.161	/N01.162
/N01.163	/N01.164	/N01.165	/N01.166	/N01.167	/N01.168	/N01.169	/N01.170
/N01.171	/N01.172	/N01.173	/N01.174	/N01.175	/N01.176	/N01.177	/N01.178
/N01.179	/N01.180	/N01.181	/N01.182	/N01.183	/N01.184	/N01.185	/N01.186
/N01.187	/N01.188	/N01.189	/N01.190	/N01.191	/N01.192	/N01.193	/N01.194
/N01.195	/N01.196	/N01.197	/N01.198	/N01.199	/N01.200	/N01.201	/N01.202
/N01.203	/N01.204	/N01.205	/N01.206	/N01.207	/N01.208	/N01.209	/N01.210
/N01.211	/N01.212	/N01.213	/N01.214	/N01.215	/N01.216	/N01.217	/N01.218
/N01.219	/N01.220	/N01.221	/N01.222	/N01.223	/N01.224	/N01.225	/N01.226
/N01.227	/N01.228	/N01.229	/N01.230	/N01.231	/N01.232	/N01.233	/N01.234
/N01.235	/N01.236	/N01.237	/N01.238	/N01.239	/N01.240	/N01.241	/N01.242
/N01.243	/N01.244	/N01.245	/N01.246	/N01.247	/N01.248	/N01.249	/N01.250
/N01.251	/N01.252	/N01.253	/N01.254	/N01.255	/N01.256	/N01.257	/N01.258
/N01.259	/N01.260	/N01.261	/N01.262	/N01.263	/N01.264	/N01.265	/N01.266
/N01.267	/N01.268	/N01.269	/N01.270	/N01.271	/N01.272	/N01.273	/N01.274
/N01.275	/N01.276	/N01.277	/N01.278	/N01.279	/N01.280	/N01.281	/N01.282
/N01.283	/N01.284	/N01.285	/N01.286	/N01.287	/N01.288	/N01.289	/N01.290
/N01.291	/N01.292	/N01.293	/N01.294	/N01.295	/N01.296	/N01.297	/N01.298
/N01.299	/N01.300	/N01.301	/N01.302	/N01.303	/N01.304	/N01.305	/N01.306
/N01.307	/N01.308	/N01.309	/N01.310	/N01.311	/N01.312	/N01.313	/N01.314
/N01.315	/N01.316	/N01.317	/N01.318	/N01.319	/N01.320	/N01.321	/N01.322
/N01.323	/N01.324	/N01.325	/N01.326	/N01.327	/N01.328	/N01.329	/N01.330
/N01.331	/N01.332	/N01.333	/N01.334	/N01.335	/N01.336	/N01.337	/N01.338
/N01.339	/N01.340	/N01.341	/N01.342	/N01.343	/N01.344	/N01.345	/N01.346
/N01.347	/N01.348	/N01.349	/N01.350	/N01.351	/N01.352	/N01.353	/N01.354
/N01.355	/N01.356	/N01.357	/N01.358	/N01.359	/N01.360	/N01.361	/N01.362
/N01.363	/N01.364	/N01.365	/N01.366	/N01.367	/N01.368	/N01.369	/N01.370
/N01.371	/N01.372	/N01.373	/N01.374	/N01.375	/N01.376	/N01.377	/N01.378
/N01.379	/N01.380	/N01.381	/N01.382	/N01.383	/N01.384	/N01.385	/N01.386
/N01.387	/N01.388	/N01.389	/N01.390	/N01.391	/N01.392	/N01.393	/N01.394
/N01.395	/N01.396	/N01.397	/N01.398	/N01.399	/N01.400	/N01.401	/N01.402
/N01.403	/N01.404	/N01.405	/N01.406	/N01.407	/N01.408	/N01.409	/N01.410
/N01.411	/N01.412	/N01.413	/N01.414	/N01.415	/N01.416	/N01.417	/N01.418
/N01.419	/N01.420	/N01.421	/N01.422	/N01.423	/N01.424	/N01.425	/N01.426
/N01.427	/N01.428	/N01.429	/N01.430	/N01.431	/N01.432	/N01.433	/N01.434
/N01.435	/N01.436	/N01.437	/N01.438	/N01.439	/N01.440	/N01.441	/N01.442
/N01.443	/N01.444	/N01.445	/N01.446	/N01.447	/N01.448	/N01.449	/N01.450
/N01.451	/N01.452	/N01.453	/N01.454	/N01.455	/N01.456	/N01.457	/N01.458
/N01.459	/N01.460	/N01.461	/N01.462	/N01.463	/N01.464	/N01.465	/N01.466
/N01.467	/N01.468	/N01.469	/N01.470	/N01.471	/N01.472	/N01.473	/N01.474
/N01.475	/N01.476	/N01.477	/N01.478	/N01.479	/N01.480	/N01.481	/N01.482
/N01.483	/N01.484	/N01.485	/N01.486	/N01.487	/N01.488	/N01.489	/N01.490
/N01.491	/N01.492	/N01.493	/N01.494	/N01.495	/N01.496	/N01.497	/N01.498
/N01.499	/N01.500	/N01.501	/N01.502	/N01.503	/N01.504	/N01.505	/N01.506
/N01.507	/N01.508	/N01.509	/N01.510	/N01.511	/N01.512	/N01.513	/N01.514
/N01.515	/N01.516	/N01.517	/N01.518	/N01.519	/N01.520	/N01.521	/N01.522
/N01.523	/N01.524	/N01.525	/N01.526	/N01.527	/N01.528	/N01.529	/N01.530
/N01.531	/N01.532	/N01.533	/N01.534	/N01.535	/N01.536	/N01.537	/N01.538
/N01.539	/N01.540	/N01.541	/N01.542	/N01.543	/N01.544	/N01.545	/N01.546
/N01.547	/N01.548	/N01.549	/N01.550	/N01.551	/N01.552	/N01.553	/N01.554
/N01.555	/N01.556	/N01.557	/N01.558	/N01.559	/N01.560	/N01.561	/N01.562
/N01.563	/N01.564	/N01.565	/N01.566	/N01.567	/N01.568	/N01.569	/N01.570
/N01.571	/N01.572	/N01.573	/N01.574	/N01.575	/N01.576	/N01.577	/N01.578
/N01.579	/N01.580	/N01.581	/N01.582	/N01.583	/N01.584	/N01.585	/N01.586
/N01.587	/N01.588	/N01.589	/N01.590	/N01.591	/N01.592	/N01.593	/N01.594
/N01.595	/N01.596	/N01.597	/N01.598	/N01.599	/N01.600	/N01.601	/N01.602
/N01.603	/N01.604	/N01.605	/N01.606	/N01.607	/N01.608	/N01.609	/N01.610
/N01.611	/N01.612	/N01.613	/N01.614	/N01.615	/N01.616	/N01.617	/N01.618
/N01.619	/N01.620	/N01.621	/N01.622	/N01.623	/N01.624	/N01.625	/N01.626
/N01.627	/N01.628	/N01.629	/N01.630	/N01.631	/N01.632	/N01.633	/N01.634
/N01.635	/N01.636	/N01.637	/N01.638	/N01.639	/N01.640	/N01.641	/N01.642
/N01.643	/N01.644	/N01.645	/N01.646	/N01.647	/N01.648	/N01.649	/N01.650
/N01.651	/N01.652	/N01.653	/N01.654	/N01.655	/N01.656	/N01.657	/N01.658
/N01.659	/N01.660	/N01.661	/N01.662	/N01.663	/N01.664	/N01.665	/N01.666
/N01.667	/N01.668	/N01.669	/N01.670	/N01.671	/N01.672	/N01.673	/N01.674
/N01.675	/N01.676	/N01.677	/N01.678	/N01.679	/N01.680	/N01.681	/N01.682
/N01.683	/N01.684	/N01.685	/N01.686	/N01.687	/N01.688	/N01.689	/N01.690
/N01.691	/N01.692	/N01.693	/N01.694	/N01.695	/N01.696	/N01.697	/N01.698
/N01.699	/N01.700	/N01.701	/N01.702	/N01.703	/N01.704	/N01.705	/N01.706
/N01.707	/N01.708	/N01.709	/N01.710	/N01.711	/N01.712	/N01.713	/N01.714
/N01.715	/N01.716	/N01.717	/N01.718	/N01.719	/N01.720	/N01.721	/N01.722
/N01.723	/N01.724	/N01.725	/N01.726	/N01.727	/N01.728	/N01.729	/N01.730
/N01.731	/N01.732	/N01.733	/N01.734	/N01.735	/N01.736	/N01.737	/N01.738
/N01.739	/N01.740	/N01.741	/N01.742	/N01.743	/N01.744	/N01.745	/N01.746
/N01.747	/N01.748	/N01.749	/N01.750	/N01.751	/N01.752	/N01.753	/N01.754
/N01.755	/N01.756	/N01.757	/N01.758	/N01.759	/N01.760	/N01.761	/N01.762
/N01.763	/N01.764	/N01.765	/N01.766	/N01.767	/N01.768	/N01.769	/N01.770
/N01.771	/N01.772	/N01.773	/N01.774	/N01.775	/N01.776	/N01.777	/N01.778
/N01.779	/N01.780	/N01.781	/N01.782	/N01.783	/N01.784	/N01.785	/N01.786
/N01.787	/N01.788	/N01.789	/N01.790	/N01.791	/N01.792	/N01.793	/N01.794
/N01.795	/N01.796	/N01.797	/N01.798	/N01.799	/N01.800	/N01.801	/N01.802
/N01.803	/N01.804	/N01.805	/N01.806	/N01.807	/N01.808	/N01.809	/N01.810
/N01.811	/N01.812	/N01.813	/N01.814	/N01.815	/N01.816	/N01.817	/N01.818
/N01.819	/N01.820	/N01.821	/N01.822	/N01.823	/N01.824	/N01.825	/N01.826
/N01.827	/N01.828	/N01.829	/N01.830	/N01.831	/N01.832	/N01.833	/N01.834
/N01.835	/N01.836	/N01.837	/N01.838	/N01.839	/N01.840	/N01.841	/N01.842
/N01.843	/N01.844	/N01.845	/N01.846	/N01.847	/N01.848	/N01.849	/N01.850
/N01.851	/N01.852	/N01.853	/N01.854	/N01.855	/N01.856	/N01.857	/N01.858
/N01.859	/N01.860	/N01.861	/N01.862	/N01.863	/N01.864	/N01.865	/N01.866
/N01.867	/N01.868	/N01.869	/N01.870	/N01.871	/N01.872	/N01.873	/N01.874
/N01.875	/N01.876	/N01.877	/N01.878	/N01.879	/N01.880	/N01.881	/N01.882
/N01.883	/N01.884	/N01.885	/N01.886	/N01.887	/N01.888	/N01.889	/N01.890
/N01.891	/N01.892	/N01.893	/N01.894	/N01.895	/N01.896	/N01.897	/N01.898
/N01.899	/N01.900	/N01.901	/N01.902	/N01.903	/N01.904	/N01.905	/N01.906
/N01.907	/N01.908	/N01.909	/N01.910	/N01.911	/N01.912	/N01.913	/N01.914
/N01.915	/N01.916	/N01.917	/N01.918	/N01.919	/N01.920	/N01.921	/N01.922
/N01.923	/N01.924	/N01.925	/N01.926	/N01.927	/N01.928	/N01.929	/N01.930
/N01.931	/N01.932	/N01.933	/N01.934	/N01.935	/N01.936	/N01.937	/N01.938
/N01.939	/N01.940	/N01.941	/N01.942	/N01.943	/N01.944	/N01.945	/N01.946
/N01.947	/N01.948	/N01.949	/N01.950	/N01.951	/N01.952	/N01.953	/N01.954
/N01.955	/N01.956	/					

Copyright as per DIN 34 to be observed

H30.15ME  
ZIF20  
ADAM

03	AS BUILT	5.12.2005	AD	Date	06.06.2005	US STEEL KOSICE/SLOVAKIA	LIST OF EQUIPMENT	150.3023.01-A4-741-403	S=L01	/ZIF20
02	FACT.-REV.	30.10.2005	BL	Drawn	Hänicke	50.3023.01	PANEL	Typ: 01		Sheet123
01	Approval	30.06.2005	lhp	Checked	Grahamm	SUBSTATION T81	01	INCOMING FEEDER		60Sh.
NO.	Alteration	Date	Name	Std.	Orig.					



GEHÄUSE  
SCHUTZERDUNG

03	AS BUILT	5.12.2008	AD	06.06.2005	US STEEL KOS (CZ/SLOVAKIA)	 <b>AREVA</b>	LIST OF EQUIPMENT		50_3023_01-44-741403	S =L01	/ ZIFZ1
02	FACT -REV.	30.10.2005	BL	Drawn Hhnicke	50_3023_01		PANEL		Typ: 01	Sheet 24	
01	Approval	30.06.2005	Hae	Check Grohmann	SUBSTATION T81	01		INCOMING FEEDER	D009781.01.601-3.AHA	60Sh.	
ND	Name/Std.	Date	Alteration	Iss for	Orig:	iss by:					



[illegible]

1		2		3		4		5		6		7		8	
1		2		3		4		5		6		7		8	
TIME RELAY		Manuf. : AREVA		Type: C27900											
OUTPUT PULSE		Ord. No. : 701917/1													
FUNCTION : IMPULSDREHNER		RATED VOLTAGE : 24-240AC/DC		Ordering number											
Technical components per device		Type													
Application		Settings		Location		Item designation									
PULSE EXP.				+S1.R		-K100									
2		3		4		5		6		7		8		9	
AUXILIARY CONTACTOR		Manuf. : Schneider Electric		Type: CA3-KN31 BD3											
Ord. No. : CA3-KN31 BD3															
RATED VOLTAGE : 24VDC		Technical components per device		Type		Ordering number									
Application		Settings		Location		Item designation									
C.B. OPEN				+S1.R		-K0A									
C.B. CLOSED				+S1.R		-K0E									
2		3		4		5		6		7		8		9	
AUXILIARY CONTACTOR		Manuf. : Schneider Electric		Type: CA3-KN31 MD3											
Ord. No. : CA3-KN31 MD3															
RATED VOLTAGE : 220VDC		Technical components per device		Type		Ordering number									
Application		Settings		Location		Item designation									
ANTI-PUMPING FEATURE				+S1.R		-K210									
C.B.F.				+S1.R		-K0BF									
1		2		3		4		5		6		7		8	
VOLTAGE RELAYS		Manuf. : AREVA		Type: C27900											
Ord. No. : 701917/1															
RATED VOLTAGE : 220VDC		Technical components per device		Type		Ordering number									
Application		Settings		Location		Item designation									
VOLTAGE				+S1.R		-K300									

03	AS BUILT	5.12.2006	AD	Date	06.06.2005	US STEEL KOSICE/SLOVAKIA	LIST OF EQUIPMENT	50.3023.01-A4-741-403	S	=L01	/ZIK1
02	FACT - REV.	30.10.2005	BL	Drawn	Hanicka	50.3023.01	PANEL				Sheet 26
01	Approval	30.06.2005	Hne	Check	Grohmann	SUBSTATION T81	01	INCOMING FEEDER	D009781.01.601-3.AHA		60Sh.
NO.	Alteration	Date	Named	Std.	Iss. by:	Orig.:	Iss. for				

33	AS BUILT	5.12.2005	AD	06.06.2005	US STEEL KOSICE/SLOVAKIA		LIST OF EQUIPMENT	50.3023.01-44-741-403	S = 0.01	
32	FACT -REV.	30.10.2005	BL	Drawn	Hbnické					50.3023.01
31	Approval	30.05.2005	line	Check	Grohmann					
40.	Alteration	Date	Name	Sig.	Orig.:					iss. by:
							PANEL	01		
							Type: 01 INCOMING FEEDER	D009781.01_601-3_AHA 60SH.		

D0978101 Copyright as per DIN 34 to be observed

07.12.2006  
HJ0115NE  
Z181  
ADAM

1		2		3		4		5		6		7		8	
1		RESISTOR		Manuf. : Heine Resistors GmbH Ord. No. : 74201720027		Type: EFM 60x300									
		RESISTOR		DAMPING											
		RESISTANCE		: 22 Ohm +/- 10%		POWER : 430W									
		Technical components per device		Type		Ordering number									
		Application		Settings		Location		Item designation							
		DAMPING RESISTANCE				+S1.R		-R452							
								/T01.6				/T01.7			

00978101 Copyright as per DIN 34 to be observed

07.12.2008  
HJO 15ME  
Z151  
ADAM

03	AS BUILT	5.12.2006	AD	Date	106.06.2005	US STEEL KOSICE/SLOVAKIA	LIST OF EQUIPMENT	50.3023.01-A4-741-403	S=L01	8
02	FACT.-REV.	30.10.2005	BL	Drawn	Hönicke	50.3023.01	PANEL	Typ: 01	INCOMING FEEDER	7
01	Approval	30.06.2005	Hoe	Checked	Grohmann	SUBSTATION T81	01	01	D009781.01.601-3.AHA	6
NO.	Alteration	Date	Name	Std.	2	Iss. for	Iss. by:	4	5	8

1	1	2	3	4	5	6	7	8
PB		Manuf. : Schneider Electric		Type: HARMONY Style 5				
PUSH-BUTTON OFF		RED-AND-WHITE CIRCLE						
SWITCHING CONTACTS : 2S,10		CONTACT SEQUENCE :						
Technical components per device		Type		Ordering number				
1 RED-AND-WHITE CIRCLE S071457		ZB5-AA432		ZB5-AA432				
1 FIXING FLANGE S071460		ZB5-AZ009		ZB5-AZ009				
1 AUXIL SWITCH (NO) S071461		1S (NO)		ZBE-101				
1 AUXIL SWITCH (NC) S071462		10 (NC)		ZBE-102				
Application		Settings		Location		Item designation		
CIRCUIT-BREAKER OFF		S1.T		S1.T		-SOA		
PB		Manuf. : Schneider Electric		Type: HARMONY Style 5				
PUSHBUTTON ON		GREEN-AND-WHITE BAR						
SWITCHING CONTACTS : 2S 10		CONTACT SEQUENCE :						
Technical components		Type		Ordering number				
1 GREEN-AND-WHITE BAR S071458		ZB5-AA431		ZB5-AA431				
1 FIXING FLANGE S071460		ZB5-AZ009		ZB5-AZ009				
1 AUXIL SWITCH (NO) S071461		1S (NO)		ZBE-101				
1 AUXIL SWITCH (NC) S071462		10 (NC)		ZBE-102				
Application		Settings		Location		Item designation		
CIRCUIT-BREAKER ON		S1.T		S1.T		-SDE		
1 SWITCH		Manuf. : SONTHEIMER		Type: WS4/8ZN/NS-T1.0511+T				
Inscription:		Ord. No. : WS4/8ZN/NS.						
1=LOCAL		2=REMOTE						
SWITCHING CONTACTS : 4		POSITIONS : 2						
Technical components per device		Type		Ordering number				
1 DOUBLE THROW SWITCH 40/A/F		S1.T		S200				
Application		Settings		Location		Item designation		
DOUBLE THROW SWITCH 40/A/F		S1.T		S1.T		-S200		
Diagram 1		Diagram 2		Diagram 3		Diagram 4		

D0978101 Copyright as per DIN 34 to be observed

HJ015ME  
Z101  
ADAM

2 TRANSUCER  
Manuf.: GOSSEN  
Ord.No.:  
PROGRAMMIERBARER MULTI-MESSUMFORMER

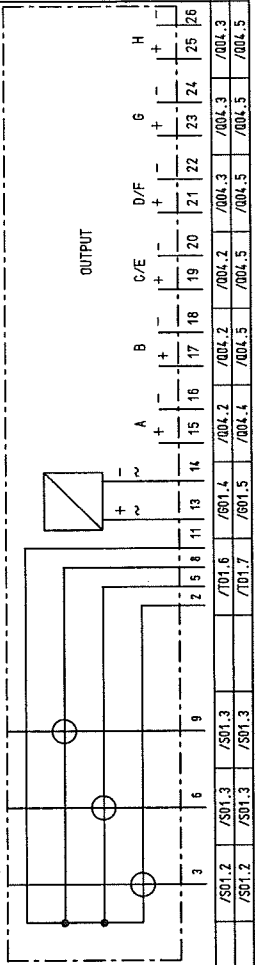
Type: SINEAX DME424/442

INPUT  
Technical components per device

OUTPUT  
Typ

Ordering number

Application	Settings	Location	Item designation
MULTIFUNCTION	CONVERTER	+S1.R	-U401
MULTIFUNCTION	CONVERTER	+S1.R	-U402



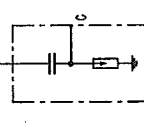
03	AS BUILT	5.12.2006	AD	Date	06.06.2005	US STEEL KOSICE/SLOVAKIA	LIST OF EQUIPMENT	50.3023.01-A4-741-403	S=L01	/Z101
02	FACT.-REV.	30.10.2005	BL	Drawn	Hönigle	50.3023.01	PANEL			
01	Approval	30.06.2005	Hoe	Checked	Grohmann	SUBSTATION T81	01			
NO.	Alteration	Date	Named	Std.		Iss. for	Iss. by:	D009781.01.601-3.AHA	Typ: 01	Sheet 30
						Orig.:		INCOMING FEEDER		60Sh.

1 2 3 4 5 6 7 8

D0978101 Copyright as per DIN 34 to be observed!

07.12.2006  
H30115ME  
1001  
Z001  
ADAM

1		2		3		4		5		6		7		8	
3		CAPACITIVE COUPLING		Manuf. AREVA Sachsenwerk		Type: HD-SYSTEM									
SERIES		: W1													
Technical components per device		Typ		Ordering number											
Application		Settings		Location		Item designation									
CAP. TAPPING				+S2		-CL1									
CAP. TAPPING				+S2		-CL2									
CAP. TAPPING				+S2		-CL3									
						7102.2									
						7102.4									
						7102.5									



03		AS BUILT		5.12.2005		AD		Date		06.06.2005		US STEEL KOSICE/SLOVAKIA		LIST OF EQUIPMENT		50.3023.01-A4-741-403		S=L01		/ Z001	
02		FACT.-REV.		30.10.2005		BL		Drawn		Hönicke		50.3023.01									
01		Approval		30.06.2005		Hoe		Checked		Grahamm		SUBSTATION T81									
NO.		Alteration		Date		Name		Std.		Orig.		Iss. for		Iss. by:		PANEL		Typ: 01		D009781.01.601-3.AHA	
																01		INCOMING FEEDER		60SH	

03	AS BUILT	5.12.2005	AD	Date	06.06.2005	US STEEL KOSICE/SLOVAKIA		LIST OF EQUIPMENT		50.3023.01-A4-741403	S	=L01	72P1
02	FACT.-REV.	30.10.2005	BL	Drawn	Hänticke	50.3023.01							
01	Approval	30.06.2005	Hae	Checked	Grohmann	SUBSTATION T81							
NO.	Alteration	Date	Named	Std.		Orig.	Iss.	for					
1													
2													
3													
4													
5													
6													
7													
8													

INDICATOR

Manuf. AREVA Sachsenwerk

Ord. No. :

Type: IVIS

INTELLIGENT

VOLT

INFORMATION SYSTEM

RATED VOLTAGE

Technical components per device

Typ

Ordering number

Application

IVIS

Settings

+S2

Location

+S2

Item designation

-P100

SW

VS

BL

PE1

PE2

102.3

102.5

102.7

102.5

102.5

150.3023.01-A4-741403

S

=L01

Typ: 01

INCOMING FEEDER

D009781.01.601-3.AHA

Sheet 32

60Sh.

Copyright as per DIN 34 to be observed!

D0978101



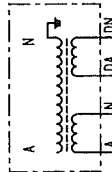
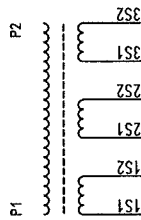
Technical components per device	Type	Ordering number
Application EARTHING SYSTEM	Settings +S2	Item designation -08

Application	Settings	location	Item designation
EARTHING SWITCH		+S2	-08

03	AS BUILT	5.12.2006	AD	Date	10.06.2005	US STEEL KOSICE/SLOVAKIA	 <b>AREVA</b>	LIST OF EQUIPMENT		50.3023.01-A4-741403		S=L01		
01	FACT - REV.	30.10.2005	BL	Drawn	Hänticke	50.3023.01		PANEL		Typ: 01		Sheet 34		
02	Approval	30.06.2005	Hoe	Check	Grohmann	SUBSTATION T81		01		INCOMING FEEDER		60Sh.		
NO.	Alteration	Date	Name	Std.	Orig.:	iss.for	iss.by:						D009781.01.601-3.AHA	

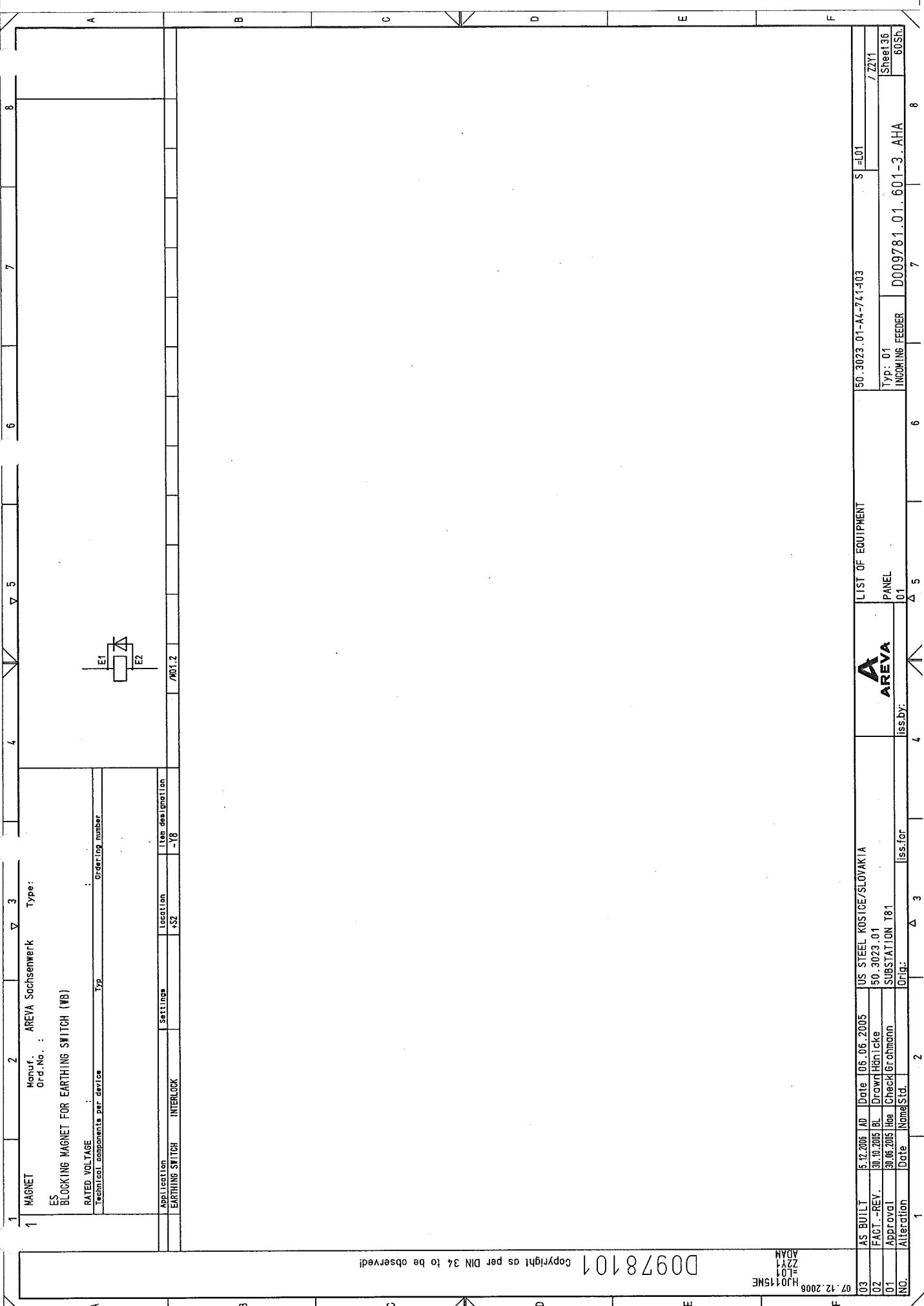
03	AS BUILT	15.12.2005	AD	Date	06.06.2005	US STEEL KOSTICE/SLOVAKIA	LIST OF EQUIPMENT	50.3023.01-A4-741-403	S=L01	8
02	FACT.-REV.	30.10.2005	BL	Drawn	Hönicke	50.3023.01				
01	Approval	30.06.2005	He	Checked	Grohmann	SUBSTATION T81				
NO.	Alteration	Date	Name	Std.	2	Orig.	Iss. for	Iss. by:	PANEL 01	8
									D009781.01.601-3.AHA	
									Typ: 01 INCOMING FEEDER	
									Sheet 35	
									60SL	

1	2	3	4	5	6	7	8
4	CURR. TRANSF.	MANUF.: SEE COVER SHEET	TYPE SEE COVER SHEET				
	CABLE-TYPE CT	PO NO.:					
		: IEC					
	TECHNICAL COMPONENTS	TYP	ORDER NO				
	APPLICATION	SETTINGS	MOUNTING	BTM IDENTIFIER			
	CABLE-TYPE CT	+S2		-T91	/S02.6		
	CABLE-TYPE CT	+S2		-T92	/S02.6		
	CABLE-TYPE CT	+S2		-T93	/S02.7		
	CABLE-TYPE CT	+S2		-T94	/S02.8		
3	CURR. TRANSF.	MANUF.: SEE COVER SHEET	TYPE SEE COVER SHEET				
		PO NO.:					
		: IEC					
	TECHNICAL COMPONENTS	TYP	ORDER NO				
	APPLICATION	SETTINGS	MOUNTING	BTM IDENTIFIER			
	CURR. TRANSF.	L1	+S2	-T11.1	/S01.2 /S01.5 /S02.2		
	CURR. TRANSF.	L2	+S2	-T11.2	/S01.3 /S01.6 /S02.3		
	CURR. TRANSF.	L3	+S2	-T11.3	/S01.3 /S01.7 /S02.3		
3	VOLTAGE TRANSF.	MANUF.: SEE COVER SHEET	TYPE SEE COVER SHEET				
	WITH DA/ON WINDING	PO NO.:					
		: IEC					
	TERMINAL DESIGNATION: IEC	MODEL	TYP	ORDER NO			
	TECHNICAL COMPONENTS	TYP	ORDER NO				
	APPLICATION	SETTINGS	MOUNTING	BTM IDENTIFIER			
	VOLT. TRANSF.	L1	+S2	-T5L1	/T01.2 /T01.6		
	VOLT. TRANSF.	L2	+S2	-T5L2	/T01.3 /T01.6		
	VOLT. TRANSF.	L3	+S2	-T5L3	/T01.4 /T01.7		



D0978101 Copyright as per DIN 34 to be observed!

07.12.2008  
HJ0115NE  
L01  
ZZY1  
ADAM



D0978101 Copyright as per DIN 34 to be observed!

07.12.2008  
HJ015ME  
Z301  
ADAM

03	AS BUILT	15.12.2005	AD	Date	06.06.2005	US STEEL KOSICE/SLOVAKIA	LIST OF EQUIPMENT	50.3023.01-44-741-403	S=L01	8
02	FACT.-REV.	30.10.2005	BL	Drawn	Hänicke	50.3023.01				7
01	Approval	30.06.2005	Hoe	Checked	Grohmann	SUBSTATION T81	PANEL		Typ: 01	Sheet 37
NO.	Alteration	Date	Name	Std.	Orig.	Iss. for	Iss. by:	D009781.01.601-3.AHA	INCOMING FEEDER	60Sh.

1	STUCK-TITEL	DESCRIPTION, DESIGN, TECHNICAL DATA	MANUFACTURER, TYPE, ORDERING DATA	SETTINGS	MOUNTING	APPA. DESIG.	4	5	6	7	8
1	CIRCUIT-BREAKER	MANUF.: ALSTOM	TYPE ECA 12-40-12-21								
		PO NO.:									
		TECHNICAL COMPONENTS	TYP	ORDER NO							
		APPLICATION	SETTINGS	MOUNTING	BTM IDENTIFIER						
		CIRCUIT-BREAKER		+S3	-00						
		1	AUXILIARY SWITCH	HERST.: ALSTOM	TYP:						
		98_POL	BEST.NR.:								
		TECHNISCHE KOMPONENTEN	TYP	BESTELLNUMMER							
		VERBUNDUNGSECK	EINSELLOSTEN	EINBAUORT	BTM-KENNZEICHEN						
		AUXILIARY SWITCH	+S3	+S3	-001						

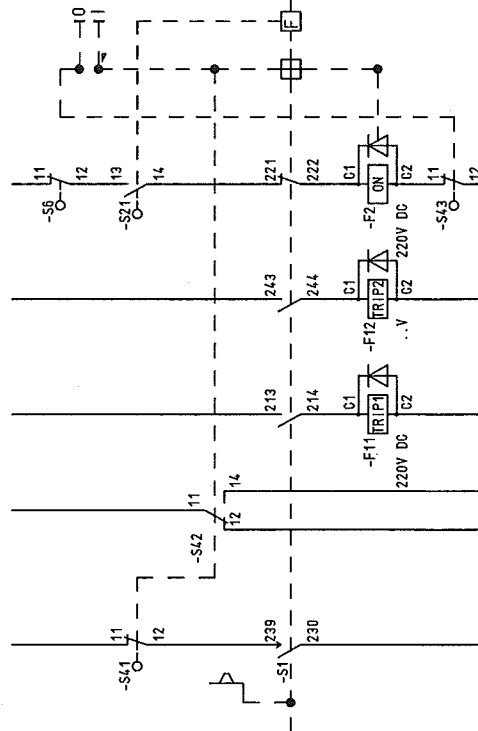
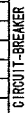
REFERENCES FOR GROUP REPRES. IN CIRCUIT DIAGRAM

REFERENCES TO SEP. DOCUMENTS WITH DETAILS OF REPRES.

REFERENCES FOR REPRES.OF APPLIANCE CONNECTIONS

11 12 21 22 31 32 41 42 13 14 23 24 33 34 43 44

TRENNST. BETRIEBSST.



LIST OF EQUIPMENT	PANEL	01
-------------------	-------	----

50.3023.01-A4-741-403		S=L01	/ Z302	Sheet 38
Typ: 01 INCOMING FEEDER		D009781.01.601-3.AHA 60Sh.		

[illegible]

[illegible]



Copyright as per DIN 34 to be observed!

1 CABLE Wires used SHEET STATE CABLE TYPE SECTION CORES ROUTE CIRCUIT DIAGRAM												4		5		6		7		8	
CABLE MATERIAL Ø COLOR TERM. TYPE												CABLE MATERIAL		Ø		COLOR		TERM. TYPE			
STANDARD: H07V-K 1.5MM2 SW STANDARD: UKSN												H07V-K 1.5MM2 SW		H07V-K 1.5MM2 SW		SW		SW			
POS.: 0 H05V-K 1.0MM2 SW												0 H05V-K 1.0MM2 SW		SW		SW					
-X1																					
RÜCK-REF.	NO												CORES/ LINE	DESTINAT. DESIG.	EXTERNAL	POT	NO	DESTINAT. DESIG.	INTERNAL	CORES/ LINE	REMARK
	1	2	3	4	5	6	7	8	9	10	11	12									
/M01.4														-K0BF	14		113	-K200	A1		
/M01.5																	114	+S1.T -F301	-X3	35	
/M01.6																	115	+S1.T -S0A		14	
/M01.6																	116	-X01	A03	0	
/M01.6														-K0A			117	-K0A		14	
/M01.6																	118	+S1.T -S200		3	
/M01.7														-K0E	14		119	+S1.T -S0E		14	
/M01.7														=L05 +S1.R -X8	860		120	-K200		22	
/M01.4														=L08 +S1.R -X8	813		121	-X01	A05	0	
/M01.5														=L09 +S1.R -X8	867		121A				
/M01.6																	122	+S1.T -S0E		33	
/M01.7														-K0E	33		123	-X01	A06	0	
/M01.8																	124				
/M01.8																	125				
/M01.8																	126				
/M01.8																	127				
/G01.5														-F103	2		128	+S1.T -F301	-X1	13	
/G01.5														-F103	4		129	+S1.T -F301	-X1	14	
/M01.2														+S1.T -F301	-X3	27	130	+S2 -Y8	E1		
/M01.3																	131	+S2 -S81		14	
/M01.3																	132	+S2 -U8	-S1	52	
/M01.5														-K0BF	34		133				
/M01.5														-X8	828		134	-X01	C01		

07.12.2006

00978101

Copyright as per DIN 34 to be observed!

03 AS BUILT 5.12.2005 AD Date 06.06.2005 US STEEL KOSICE/SLOVAKIA

02 FACT.-REV. 30.10.2005 BL Drawn Hhnlcke 50.3023.01

01 Approval 30.06.2005 Hae Check Grohmann SUBSTATION T81

NO Alteration Date Name/Sid Orig: Iss.for Iss.by: PANEL

009781.01.601-3.AHA

50.3023.01-A4-741-403

V=L01

+S1.R

/K11

Sheet41

60Sh.

07.12.2006

03	AS BUILT	5.12.2005	AD	Date	06.06.2005	US STEEL KOSTICE/SLOVAKIA	TERMINAL DIAGRAM	50.3023.01-A4-741403	V1=L01
02	FACT.-REV.	30.10.2005	BL	Drawn	Hänicke	50.3023.01			+S1.R
01	Approval	30.06.2005	Hoe	Check	Grohmann	SUBSTATION T81	PANEL	Typ: 01	/K11
NO.	Alteration	Date	Name	Std.	Orig.	Iss.for	Iss.by:	INCOMING FEEDER	Sheet 41
								D009781.01.601-3.AHA	60Sh.



1	2	3	4	5	6	7	8
NO.   CABLE	WIRES USED SHEET/STATE	CABLE-TYPE SECTION	CORES	-ROUTE	CIRCUIT DIAGRAM	CABLE MATERIAL	TERM. TYPE
RÜCK-REF.	NO	DESTINAT. DESIG.	EXTERNAL	POT	NO	DESTINAT. DESIG.	INTERNAL
	1	2	3	4	5	6	7
	1	2	3	4	5	6	7
/R01.2						102L+	401
/R01.2						102L+	402
/R01.3						102L+	403
/R01.5						102L+	404
/R01.2						102L-	405
/R01.2						102L-	406
/R01.5						102L-	407
/R01.7						102L-	408
/R01.3							409
/R01.3							410
/R01.3							411
/R01.5							412
/R01.5							413
/R01.5							414
/R01.6							415
/R01.6							416
/R01.6							417
/R01.6							418
/R01.7							419
/R01.7							420
/R01.8							421
/R01.8							422
/R01.8							423
/R01.8							424
/R01.8							425

-X4

STANDARD: H07V-K 1.5MM2 SW STANDARD: UK5N  
 POS.: 0 H05V-K 1.0MM2 SW

INSTALLATION

Copyright as per DIN 34 to be observed!

D00978101

07.12.2006

03 AS BUILT 5.12.2005 AD Date 06.06.2005  
 02 FACT -REV. 30.10.2005 BL Drawn Hönicke  
 01 Approval 30.06.2005 Hae Check Grahmann  
 NO. Alteration Date Name Std.

US STEEL KOSICE/SLOVAKIA  
 50.3023.01  
 SUBSTATION T81  
 Orig.:

iss.by:

PANEL  
 01

TERMINAL DIAGRAM

50.3023.01-A4-741403  
 V=L01  
 +S1.R

Typ: 01  
 INCOMING FEEDER  
 D009781.01.601-3.AHA  
 Sheet 43  
 60SH.

[illegible]

1	2	3	4	5	6	7	8
NO   CABLE	WIRES USED SHEET STATE	CABLE-TYPE SECTION	CORES	-ROUTE	CIRCUIT DIAGRAM	CABLE MATERIAL	TERM. TYPE
					INSTALLATION	H07V-K 2.5MM2 SW	STANDARD: URTK/S

Copyright as per DIN 34 to be observed!

07.12.2006

1		2		3		4		5		6		7		8							
NO. CABLE		WIRES USED SHEET STATE		CABLE-TYPE SECTION		CORES		-ROUTE		CIRCUIT DIAGRAM		CABLE MATERIAL		TERM. TYPE							
REF.												H07V-K 1.5MM2 SW		STANDARD: UKSN							
												H07V-K 2.5MM2 SW		POS.: 2							
-X6																					
RÜCK-REF.		NO		CORES/LINE		DESTINAT. DESIG.		EXTERNAL		POT		NO		DESTINAT. DESIG.		INTERN		CORES/LINE		REMARK	
/T01.2		1 2 3 4 5 6 7 8 9 10 11 12								L1		601		-F451		2					
/T01.2										L1		602		+S1.T -F301		-X1		9 Q			
/T01.6										L1		603		-U401				2 Q			
/T01.3										L1		604		-F451				4			
/T01.2										L2		605		+S1.T -F301		-X1		10 Q			
/T01.6										L2		606		-U401				5 Q			
/T01.4										L3		607		-F451				6			
/T01.3										L3		608		+S1.T -F301		-X1		11 Q			
/T01.6										L3		609		-U401				8 Q			
/T01.4										N		610		+S2 -T5L1				N Q		2	
/T01.3										N		611		+S1.T -F301		-X1		12			
/T01.7										N		612		-U401				11 Q			
/T01.7										e		613		-F452				2			
/T01.7										e		614		-R452				2			
/T01.8										e		615									
/T01.6										n		616		+S2 -T5L1				DN Q		2	
/T01.6										n		617		-R452				1			
/T01.8										n		618									

03 AS BUILT		15.12.2005		AD		Date		06.06.2005		US STEEL KOSTICE/SLOVAKIA		TERMINAL DIAGRAM		50.3023.01-A4-741403		V=L01		/K60	
02 FACIT.-REV.		30.10.2005		BL		Drawn		Hänicke		50.3023.01		PANEL				+S1.R			
01 Approval		30.06.2005		Hoe		Check		Grohmann		SUBSTATION T81		Iss.by:		Type: 01		D009781.01.601-3.AHA		Sheet 46	
NO. Alteration		Date		Name		Std.		2		Orig.		Iss.for		3		6		7	



**A**REVA



[illegible]

[illegible]

[illegible]

[illegible]

00978101

---

---

CROSS CONNECTION

[illegible]

HJ0115ME  
=LO1+S1  
Q11  
ADAM

## CROSS CONNECTION

[illegible]

# TERMINAL DIA. , 64-POLE , CIRCUIT-BREAKER

SOCKET

+S1.R -X01  
CABLE MATERIAL H05V-K 1.0mm2 SW

A				B				C				
+												+
1	-X1 /001.2 H05V-K 1.0MM2 SW	101	817	-X8 /002.4 H05V-K 1.0MM2 SW	105	-X1 /001.6	134	-X3 /001.3 H05V-K 1.0MM2 SW	131		313	1
2	-X1 /001.2 H05V-K 1.0MM2 SW	102	860	-X8 /002.2 H05V-K 1.0MM2 SW	106	-X1 /001.6	110	-X8 /002.5 H05V-K 1.0MM2 SW	102		804	2
3	-X1 /001.6 H05V-K 1.0MM2 SW	116	867	-X8 /002.2 H05V-K 1.0MM2 SW	103			-X8 /002.5 H05V-K 1.0MM2 SW	103		818	3
4	-X1 /001.6 H05V-K 1.0MM2 SW	110	868	-X8 /002.2 H05V-K 1.0MM2 SW	104			-X8 /002.5 H05V-K 1.0MM2 SW	104		820	4
5	-X1 /001.7 H05V-K 1.0MM2 SW	121	5	-X0 /001.3 H05V-K 1.0MM2 SW	105	-X8 /005.4 H05V-K 1.0MM2 SW	863		105			5
6	-X1 /001.7 H05V-K 1.0MM2 SW	123	7	-X0 /001.3 H05V-K 1.0MM2 SW	106	-X8 /005.4 H05V-K 1.0MM2 SW	871		106			6
7	-X9 /001.4 H05V-K 1.0MM2 SW	905	901	-X9 /001.2 H05V-K 1.0MM2 SW	107			-X8 /005.4 H05V-K 1.0MM2 SW	107		864	7
8	-X9 /001.3 H05V-K 1.0MM2 SW	919	915	-X9 /001.2 H05V-K 1.0MM2 SW	108			-X8 /005.4 H05V-K 1.0MM2 SW	108		872	8
9	-X9 /001.4 H05V-K 1.0MM2 SW	920	902	-X9 /001.2 H05V-K 1.0MM2 SW	109				109			9
10	-X4 /001.3 H05V-K 1.0MM2 SW	410	916	-X9 /001.2 H05V-K 1.0MM2 SW	110				110			10
11	-X4 /001.3 H05V-K 1.0MM2 SW	411	906	-X9 /001.4 H05V-K 1.0MM2 SW	111			-X9 /001.5 H05V-K 1.0MM2 SW	111		907	11
12	-X3 /001.2 H05V-K 1.0MM2 SW	302	921	-X9 /001.4 H05V-K 1.0MM2 SW	112			-X9 /001.5 H05V-K 1.0MM2 SW	112		922	12
13	-X3 /001.2 H05V-K 1.0MM2 SW	309	862	-X8 /002.3 H05V-K 1.0MM2 SW	113				113			13
14	-X3 /001.2 H05V-K 1.0MM2 SW	310	870	-X8 /002.3 H05V-K 1.0MM2 SW	114				114			14
15	-X8 /002.3 H05V-K 1.0MM2 SW	803	861	-X8 /002.3 H05V-K 1.0MM2 SW	115				115			15
16	-X8 /002.3 H05V-K 1.0MM2 SW	816	869	-X8 /002.3 H05V-K 1.0MM2 SW	116				116			16
+												+

Subject to technical modifications  
Copyright as per DIN 34 to be observed!

D0978101

HJ0115ME  
S01  
ADAM

03	AS BUILT	5.12.2005	AD	Date	05.06.2005	US STEEL KOSTGE/SLOVAKIA	PLUG DIAGRAM	50.3023.01-44-741-403	V=L01
02	FACT.-REV.	30.10.2005	BL	Drawn	Hänlcke	50.3023.01	CIRCUIT-BREAKER		+S1.R
01	Approval	30.06.2005	Hes	Checked	Grohmann	SUBSTATION T81	PANEL	Typ: 01	Sheet 54
NO	Alteration	Date	Name	Std.	Iss.	for	Iss.	Feeder	60Sh.
							01	D009781.01.601-3.AHA	

CROSS CONNECTION										1	2	3	4	5	6	7	8
REFERENCE	POTENTIAL ITEM OR. SECTION	CABLE MATERIAL COLOR	OUTPUT TERMINAL	DESTINATION 1	DESTINATION 2	DESTINATION 3	DESTINATION 4	DESTINATION 5	DESTINATION 6	A	B	C	D	E	F		
M01	1 1.5MM2	H07V-K SW		-08 51 -S81	11												
Q01	102L+ 1 1.5MM2	H07V-K SW		-08 11 -S1	-08 23												
Q02	1 1.5MM2	H07V-K SW		-08 31 -S1	-08 43												
T01	L1 2 2.5MM2	H07V-K SW		-F451	1 -T5L1	A											
T01	L2 2 2.5MM2	H07V-K SW		-F451	3 -T5L2	A											
T01	L3 2 2.5MM2	H07V-K SW		-F451	5 -T5L3	A											
T01	e 2 2.5MM2	H07V-K SW		-F452	1 -T5L3	DA											
T01	N 2 2.5MM2	H07V-K SW		-T5L1	N -T5L2	N PE	SCHRAUBE										
T01	n 2 2.5MM2	H07V-K SW		-T5L1	DN PE	SCHRAUBE											
T01	2 2.5MM2	H07V-K SW		-T5L2	DN -T5L1	DA											
T01	2 2.5MM2	H07V-K SW		-T5L3	DN -T5L2	DA											

Copyright as per DIN 34 to be observed!

07.12.2006  
HJ0115ME  
L01+S2  
ADAM

03	AS BUILT	5.12.2006	AD	Date	06.06.2005	US STEEL KOSICE/SLOVAKIA
02	FACT.-REV.	30.10.2005	BL	Date	30.10.2005	Drawn Hanička
01	Approval	30.06.2005	Hae	Date	30.06.2005	Check Grohmann
NO.	Alteration	Date	Name/Std.	Iss. for	Iss. by:	Orig.:



CROSS CONNECT. LIST

PANEL  
PANEL  
01

50.3023.01-A4-741-103

V=L01

+S2

/ 020

Sheet 56

605h.

Typ: 01  
INCOMING FEEDER

D009781.01.601-3. AHA

8

7

6

5

4

3

2

1



CROSS CONNECTION

REFERENCE	POTENTIAL ITEM CR. SECTION	CABLE MATERIAL COLOR	OUTPUT TERMINAL	DESTINATION 1	DESTINATION 2	DESTINATION 3	DESTINATION 4	DESTINATION 5	DESTINATION 6
D01	0 1.0MW2	H05V-K SW	-X01	B05 -S1	-00 71				
D01	0 1.0MW2	H05V-K SW	-X01	B06 -S1	-00 72				
L01	101L+ 0 1.0MW2	H05V-K SW	-X01	A01 -S22	-00 11				
L01	101L- 0 1.0MW2	H05V-K SW	-X01	A02 -S23	-00 12				
M01	0 1.0MW2	H05V-K SW	-F11	-00 C1 -S1	-00 214				
M01	0 1.0MW2	H05V-K SW	-F2	-00 C1 -S1	-00 222				
M01	0 1.0MW2	H05V-K SW	-F2	-00 C2 -S43	-00 11				
M01	0 1.0MW2	H05V-K SW	-S1	-00 221 -S21	-00 14				
M01	0 1.0MW2	H05V-K SW	-S21	-00 13 -S6	-00 12				
M01	0 1.0MW2	H05V-K SW	-X01	A03 -S1	-00 213				
M01	102L- 0 1.0MW2	H05V-K SW	-X01	A04 -F11	-00 C2				
M01	0 1.0MW2	H05V-K SW	-X01	A05 -S6	-00 11				
M01	0 1.0MW2	H05V-K SW	-X01	A06 -S43	-00 12				
001	102L+ 0 1.0MW2	H05V-K SW	-X01	A12 -S1	-00 11 -S1 23				
001	0 1.0MW2	H05V-K SW	-X01	A13 -S1	-00 12				
001	0 1.0MW2	H05V-K SW	-X01	A14 -S1	-00 24				
001	102L+ 0 1.0MW2	H05V-K SW	-X01	C15 -S1	-001 11 -S1 13				
001	0 1.0MW2	H05V-K SW	-X01	C16 -S1	-001 12				
001	0 1.0MW2	H05V-K SW	-X01	D01 -S1	-001 14				
002	0 1.0MW2	H05V-K SW	-X01	A15 -S1	-00 31 -S1 43				

07.12.2008  
H0115NE  
L01+S3  
ADAM

00978101

Copyright as per DIN 34 to be observed!

03	AS BUILT	5.12.2005	AD	Date	106.06.2005	US STEEL KOSICE/SLOVAKIA	GROSS CONNECT. LIST		50.3023.01-A4-741-1403	VI=L01
02	FACT.-REV.	30.10.2005	BL	Drawn	Hánické	50.3023.01	SWITCHING TRUCK			+S3
01	Approval	30.06.2005	Hoe	Checked	Grohmann	SUBSTATION T81	PANEL			/ Q30
NO.	Alteration	Date	Name	Std.	Orig.	Iss. for	Iss. by:	INCOMING FEEDER		Sheet 57
								D009781.01.601-3.AHA		60S3L

03	AS BUILT	5.12.2006	AD	Date	06.06.2005	US STEEL KOSICE/SLOVAKIA	50.3023.01-A4-741-403	VI=L01	8
02	FACT.-REV.	30.10.2005	BL	Drawn	Hänicke			+S3	/ 030
01	Approval	30.06.2005	Hes	Check	Grohmann			Typ: 01	Sheet 57
NO.	Alteration	Date	None	Std.	Orig.	Iss. for	ISS. BY:	D009781.01.601-3.AHA	60Sh.



GROSS CONNECT. LIST  
SWITCHING TRUCK  
PANEL

Copyright as per DIN 34 to be observed!

D00978101

HJ0115ME  
=L01.S3  
030  
ADAM

## CROSS CONNECTION

REFERENCE	POTENTIAL ITEM GR. SECTION	CABLE MATERIAL COLOR	OUTPUT TERMINAL	DESTINATION 1	DESTINATION 2	DESTINATION 3	DESTINATION 4	DESTINATION 5	DESTINATION 6
002	0 1.0MW2	H05V-K SW	-X01	A16 -S1	-00 32				
002	0 1.0MW2	H05V-K SW	-X01	B01 -S1	-00 44				
002	0 1.0MW2	H05V-K SW	-X01	D02 -S1	-001 21 -S1				
002	0 1.0MW2	H05V-K SW	-X01	D03 -S1	-001 22				
002	0 1.0MW2	H05V-K SW	-X01	D04 -S1	-001 24				
005	0 1.0MW2	H05V-K SW	-X01	B02 -S1	-00 51 -S1	-00 63			
005	0 1.0MW2	H05V-K SW	-X01	B03 -S1	-00 52				
005	0 1.0MW2	H05V-K SW	-X01	B04 -S1	-00 64				
005	0 1.0MW2	H05V-K SW	-X01	B13 -S42	-00 11				
005	0 1.0MW2	H05V-K SW	-X01	B14 -S42	-00 14				
005	0 1.0MW2	H05V-K SW	-X01	B15 -S25	-00 11				
005	0 1.0MW2	H05V-K SW	-X01	B16 -S25	-00 14				
005	0 1.0MW2	H05V-K SW	-X01	C05 -S1	-001 31				
005	0 1.0MW2	H05V-K SW	-X01	C06 -S1	-001 32				
005	0 1.0MW2	H05V-K SW	-X01	D07 -S1	-001 33				
005	0 1.0MW2	H05V-K SW	-X01	D08 -S1	-001 34				
R01	0 1.0MW2	H05V-K SW	-S1	-00 239 -S41	-00 12				
R01	0 1.0MW2	H05V-K SW	-X01	A10 -S41	-00 11				
R01	0 1.0MW2	H05V-K SW	-X01	A11 -S1	-00 230				
V01	0 1.0MW2	H05V-K SW	-X01	A07 -S24	-00 11				

Copyright as per DIN 34 to be observed

07.12.2006 HJ015ME  
031  
ADAM

03 AS BUILT 5.12.2005 AD Date 106.06.2005  
02 FAC.-REV. 30.10.2005 BL Drawt Hnltcke 50.3023.01  
01 Approval 30.06.2005 Hne Checkt Grahmann SUBSTATION T81  
NO. Alteration Date Name Std. Iss. for

US STEEL KOSICE/SLOVAKIA  
50.3023.01  
SWITCHING TRUCK  
CROSS CONNECT. LIST  
PANEL  
01  
ISS.BY:

AREVA

50.3023.01-AL-741-403  
V=L01  
+S3  
/ 031  
Sheet 58  
60Sh.

Typ: 01  
INCOMING FEEDER  
D009781.01.601-3. AHA

1 2 3 4 5 6 7 8

## CROSS CONNECTION

POTENTIAL						
REFERENCE	ITEM	CABLE MATERIAL	OUTPUT TERMINAL	DESTINATION 1	DESTINATION 2	DESTINATION 3
V01	0 1.0MW2	H05Y-K SW	-X01	A08 -S24	-00 12	
V01	0 1.0MW2	H05Y-K SW	-X01	A09 -S24	-00 14	
V01	0 1.0MW2	H05Y-K SW	-X01	B07 -S1	-00 83	
V01	0 1.0MW2	H05Y-K SW	-X01	B08 -S1	-00 84	
V01	0 1.0MW2	H05Y-K SW	-X01	B09 -S1	-00 91	
V01	0 1.0MW2	H05Y-K SW	-X01	B10 -S1	-00 92	
V01	0 1.0MW2	H05Y-K SW	-X01	B11 -S1	-001 41	
V01	0 1.0MW2	H05Y-K SW	-X01	B12 -S1	-001 42	
V01	0 1.0MW2	H05Y-K SW	-X01	C09 -S1	-00 103	
V01	0 1.0MW2	H05Y-K SW	-X01	C10 -S1	-00 104	
V01	0 1.0MW2	H05Y-K SW	-X01	C11 -S1	-00 111	
V01	0 1.0MW2	H05Y-K SW	-X01	C12 -S1	-00 112	
V01	0 1.0MW2	H05Y-K SW	-X01	D11 -S1	-001 43	
V01	0 1.0MW2	H05Y-K SW	-X01	D12 -S1	-001 44	

07.12.2008  
H01015ME  
L01+S3  
ADAM

00978101

Copyright as per DIN 34 to be observed!

03	AS BUILT	5.12.2006	AD	Date	06.06.2005	US STEEL KOSICE/SLOVAKIA	GROSS CONNECT. LIST	50.3023.01-A4-741-403	V=L01	/ 032
02	FACT.-REV.	30.10.2005	BL	Drawn	Hänticke	50.3023.01	SWITCHING TRUCK		+S3	/ 032
01	Approval	30.06.2005	Hee	Checked	Grohmann	SUBSTATION T81	PANEL		Typ: 01	Sheet 59
NO.	Alteration	Date	Name	Sld.	Orig:	Iss. for	Iss. by:	D009781.01.601-3.AHA	INCOMING FEEDER	60Sh.

Copyright as per DIN 34 to be observed!

HJ015ME  
=L01+S3  
Q32  
ADAM

03	AS BUILT	15.12.2005	AD	106.06.2005	US STEEL KOSICE/SLOVAKIA		GROSS CONNECT. LIST SWITCHING TRUCK	50.3023.01-A4-741403	V =L01	
02	FACT.-REV.	30.10.2005	BL	Draht Hünicke	50.3023.01					/ 032
01	Approval	30.06.2005	lee	Check/Grohmann	SUBSTATION T81					
NO.	Alteration	Date	Name/Std.	iss.for	Orig.	iss.by:	01	Typ: 01 INCOMING FEEDER	D009781.01.601-3.AHA	Sheet 59 60Sh.

$$\frac{Z}{a}$$
$$S_3 - X_0^1$$
[illegible]

03	AS BUILT	5.12.2005	AD	05.06.2005	US STEEL KOSICE/SLOVAKIA		PLUG DIAGRAM CIRCUIT-BREAKER	50_3023_01-A4-741-103	V=L01	/ S01
02	FACT -REV.	30.10.2005	BL	Drown Hönicke	50_3023_01					
01	Approval	30.05.2005	Hoo	Check Grohmann	SUBSTATION T81					
NO.	Alteration	Date	Name/Sid.	Orig.	Iss for	Iss by:	PANEL	Type: 01 INCOMING FEEDER	D009781.01.601-3.AHA	Sheet 60 60 Sh.