

US STEEL KOSICE/SLOVAKIA
50.3023.01
SUBSTATION T81

INCOMING FEEDER
CIRCUIT DIAGRAM

A = L05

/ A01

D009781.01. 605-3 .AHA

50.3023.01-A4-741-103
COVER SHEET
PANEL
05

DATE :	06.06.2005
prep.:	Hänicke
Check:	Grohmann
Norm :	

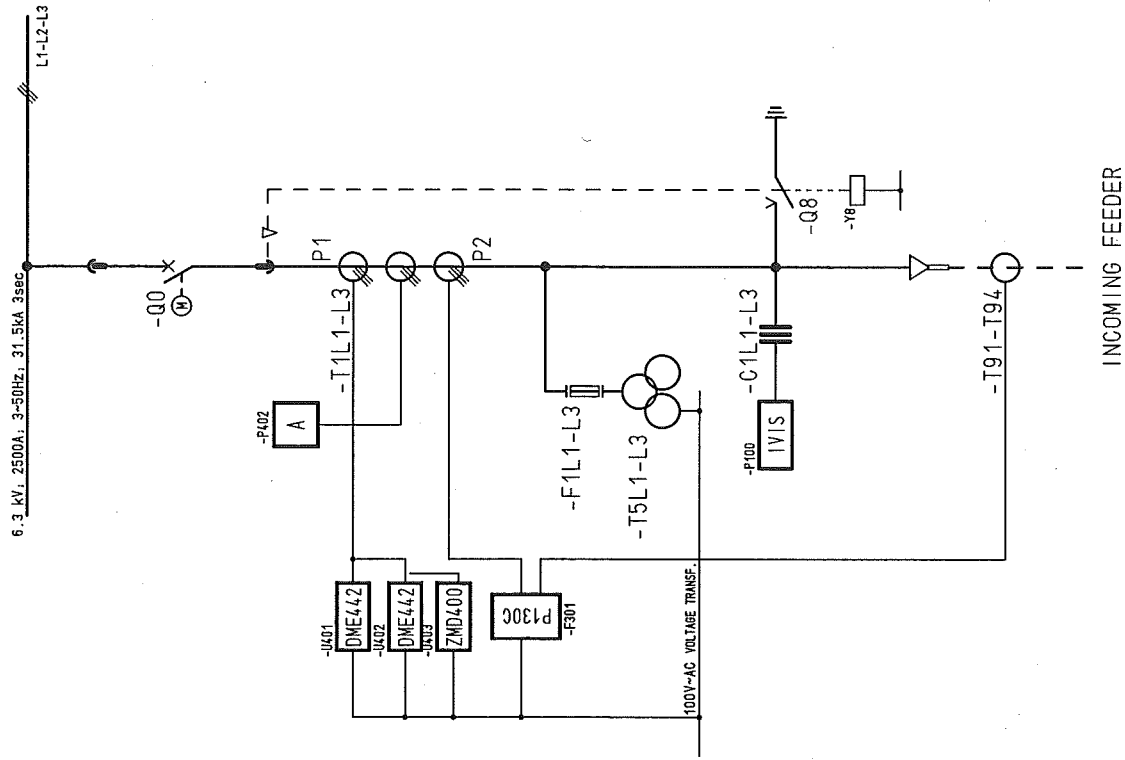
07.12.2006 HJ0145NE
A01
A05
ADAN

03 AS BUILT	5.12.2006	AD
02 FACT.-REV.	30.10.2005	BL
01 Approval	30.06.2005	Hae
Nr. Alteration	Date	Name

INSTRUMENT AND CONTROL				
FUNCTION	LOCAL	LOCAL CONTROL	REMOTE CONTROL	REMARKS
CONTROL	-08 -00		-00	
STATUS SIGNAL	-00, -08		-00, -08	
MEASUREMENT	I (L2)		I (L2), U(L1-L2) P (P2), Q(Q2)	
PROTECTION	MICROW P130C			
ANSI	27, 32, 46, 48, 49, 50P, 50N, 50BF, 51, 51N, 59, 59N, 66, 67, 67N, 79, 810			
ANSI	810, 86			
METERING	ZMD 400			

[illegible]

TECHNICAL TRANSFORMER DATA					
DESIGN	MANUFACT	TYPE	RATIO	WDE	REMARKS
-T1L1	AEG	CT12H	2500/1/1/1A	C1: cl. 0.2FS5 15VA	
-T1L2	AEG	CT12H	2500/1/1/1A	C2: cl. 1 15VA	
-T1L3	AEG	CT12H	2500/1/1/1A	C3: cl. 10P10 15VA	
-T5L1	AEG	EYEB	$\frac{6.3}{\sqrt{3}} / \frac{0.1}{\sqrt{3}} / \frac{0.1}{\sqrt{3}}$ kW	C1. 0.2 30VA W1	
-T5L2	AEG	EYEB		C1. 3P 100VA W3	
-T5L3	AEG	EYEB			
-F1L1	AEG	2A			HV FUSE
-F1L2	AEG	2A			
-F1L3	AEG	2A			
-C1L1	AREVA	IVIS			CAP. TAPPING
-C1L2	AREVA	IVIS			
-C1L3	AREVA	IVIS			
-T91-T91					Cobel Core Transf.



03	AS BUILT	5.12.2006	AD	Date	06.06.2005	US STEEL KOSICE/SLOVAKIA		CIRCUIT DIAGRAM		50. 3023. 01-A4-774.1-03		A = L05
02	FACT. - REV.	30.10.2005	BL	Drawn	Hánické	50. 3023. 01		/ A02				
01	Approval	30.06.2005	Ioe	Checked	Grohmann	SUBSTATION 781						
NO.	Alteration	Date	Named	Std.	Orig.	Iss. for	Iss. by:	05	PANEL	Type: 01	D009781.01.605-3. AHA	
									INCOMING FEEDER	60SH.		

Copyright as per DIN 34 to be observed!

CLIENT DOCUMENT NUMBER		RELEASE BY DOCUMENT NUMBER		VERSION STATUS		DOCUMENT IDENTIFICATION		SHEET		DESIGN	
						SORT MATCHING		ITEM NO.			
				01	02	03	A =L05		A01	COVER SHEET	05
				01	02	03	A =L05		A02	CIRCUIT DIAGRAM	05
				01	02	03	A =L05		B01	Inhaltstsvetzeichniss	05
				01	02	03	A =L05		B02	Inhaltstsvetzeichniss	05
				01	02	03	S =L05		D001	CIRCUIT DIAGRAM	AG-DISTRIBUTION
				01	02	03	S =L05		D001	CIRCUIT DIAGRAM	05
				01	02	03	S =L05		D001	CIRCUIT DIAGRAM	DC DISTR.
				01	02	03	S =L05		L01	CIRCUIT DIAGRAM	CIRCUIT-BREAKER
				01	02	03	S =L05		M01	CIRCUIT DIAGRAM	MOTOR DRIVE
				01	02	03	S =L05		N01	CIRCUIT DIAGRAM	CONTROL
				01	02	03	S =L05		Q01	CIRCUIT DIAGRAM	INTERLOCK
				01	02	03	S =L05		Q01	CIRCUIT DIAGRAM	05
				01	02	03	S =L05		Q02	CIRCUIT DIAGRAM	POSITION INDICA.
				01	02	03	S =L05		Q03	CIRCUIT DIAGRAM	05
				01	02	03	S =L05		Q04	CIRCUIT DIAGRAM	INTERFACE
				01	02	03	S =L05		Q05	CIRCUIT DIAGRAM	05
				01	02	03	S =L05		R01	CIRCUIT DIAGRAM	SPARE CONTACTS
				01	02	03	S =L05		S01	CIRCUIT DIAGRAM	05
				01	02	03	S =L05		S02	CIRCUIT DIAGRAM	SIGNALING
				01	02	03	S =L05		T01	CIRCUIT DIAGRAM	CURR. TRANSF.
				01	02	03	S =L05		T02	CIRCUIT DIAGRAM	05
				01	02	03	S =L05		V01	CIRCUIT DIAGRAM	VOLTAGE TRANSF.
				01	02	03	S =L05		Z1F1	CIRCUIT DIAGRAM	05
				01	02	03	S =L05		Z1F2	CIRCUIT DIAGRAM	SPARE CONTACTS
				01	02	03	S =L05		Z1F20	CIRCUIT DIAGRAM	05
				01	02	03	S =L05		Z1F21	CIRCUIT DIAGRAM	05
				01	02	03	S =L05		Z1H1	CIRCUIT DIAGRAM	05
				01	02	03	S =L05		Z1K1	CIRCUIT DIAGRAM	05
				01	02	03	S =L05		Z1P1	CIRCUIT DIAGRAM	05
				01	02	03	S =L05		Z1R1	CIRCUIT DIAGRAM	05
				01	02	03	S =L05		Z1S1	CIRCUIT DIAGRAM	05
				01	02	03	S =L05		Z1U1	CIRCUIT DIAGRAM	05
				01	02	03	S =L05		Z2C1	CIRCUIT DIAGRAM	05

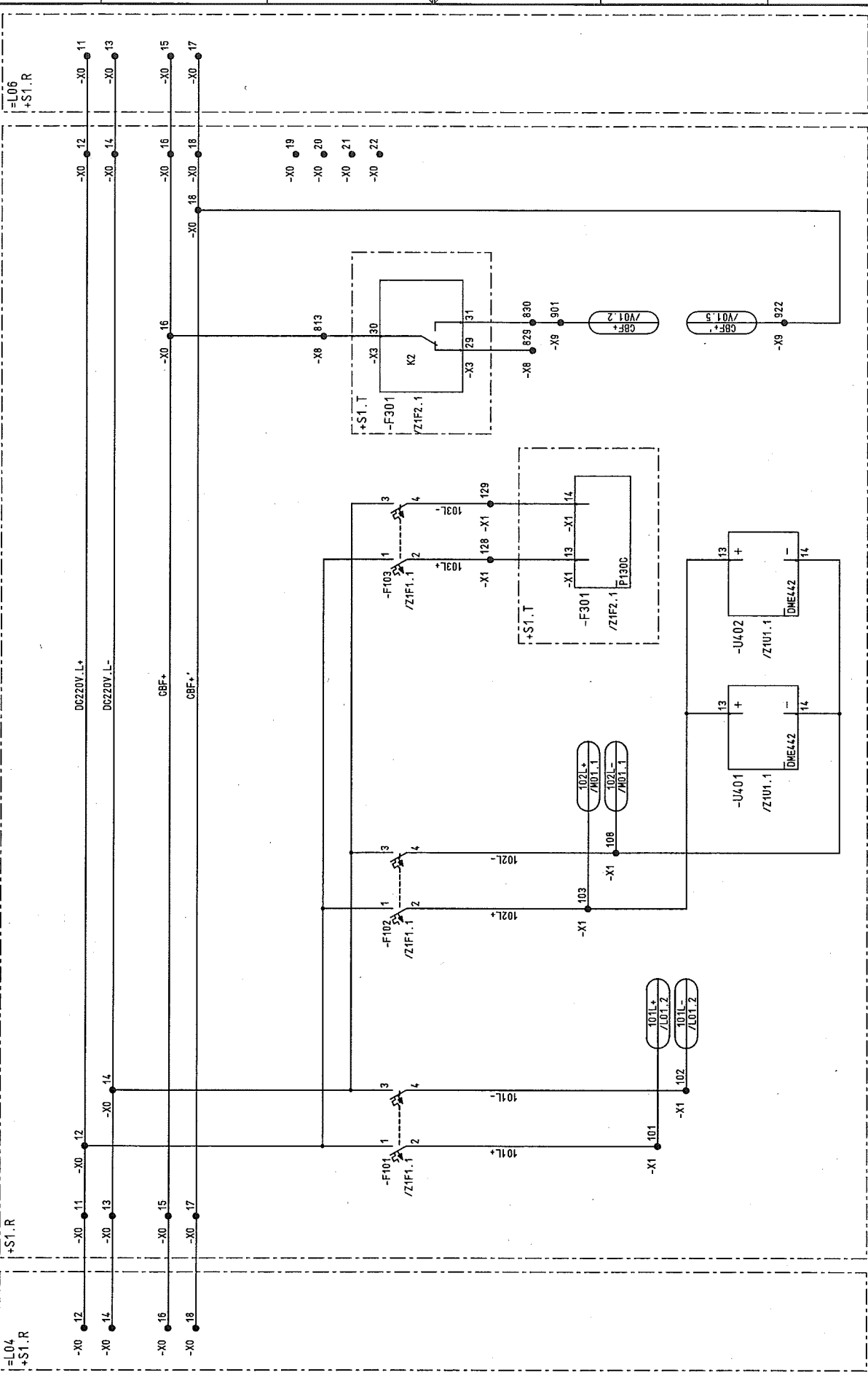
Copyright as per DIN 34 to be observed!

CLIENT DOCUMENT NUMBER		RELEASE BY DOCUMENT NUMBER		VERSION STATUS		DOCUMENT IDENTIFICATION		SHEET		DESIGN	
						SORT MATCHING		ITEM NO.			
		50_3023.01-A4-741- 103		01 02 03		S =L05		Z2P1		LIST OF EQUIPMENT PANEL 05	
		50_3023.01-A4-741- 103		01 02 03		S =L05		Z201		LIST OF EQUIPMENT PANEL 05	
		50_3023.01-A4-741- 103		01 02 03		S =L05		Z251		LIST OF EQUIPMENT PANEL 05	
		50_3023.01-A4-741- 103		01 02 03		S =L05		Z2T1		LIST OF EQUIPMENT PANEL 05	
		50_3023.01-A4-741- 103		01 02 03		S =L05		Z2Y1		LIST OF EQUIPMENT PANEL 05	
		50_3023.01-A4-741- 103		01 02 03		S =L05		Z301		LIST OF EQUIPMENT PANEL 05	
		50_3023.01-A4-741- 103		01 02 03		S =L05		Z302		LIST OF EQUIPMENT PANEL 05	
		50_3023.01-A4-741- 103		01 02 03		V =L05 +S1.R		K01		TERMINAL DIAGRAM PANEL 05	
		50_3023.01-A4-741- 103		01 02 03		V =L05 +S1.R		K10		TERMINAL DIAGRAM PANEL 05	
		50_3023.01-A4-741- 103		01 02 03		V =L05 +S1.R		K11		TERMINAL DIAGRAM PANEL 05	
		50_3023.01-A4-741- 103		01 02 03		V =L05 +S1.R		K30		TERMINAL DIAGRAM PANEL 05	
		50_3023.01-A4-741- 103		01 02 03		V =L05 +S1.R		K40		TERMINAL DIAGRAM PANEL 05	
		50_3023.01-A4-741- 103		01 02 03		V =L05 +S1.R		K50		TERMINAL DIAGRAM PANEL 05	
		50_3023.01-A4-741- 103		01 02 03		V =L05 +S1.R		K51		TERMINAL DIAGRAM PANEL 05	
		50_3023.01-A4-741- 103		01 02 03		V =L05 +S1.R		K60		TERMINAL DIAGRAM PANEL 05	
		50_3023.01-A4-741- 103		01 02 03		V =L05 +S1.R		K80		TERMINAL DIAGRAM PANEL 05	
		50_3023.01-A4-741- 103		01 02 03		V =L05 +S1.R		K81		TERMINAL DIAGRAM PANEL 05	
		50_3023.01-A4-741- 103		01 02 03		V =L05 +S1.R		K82		TERMINAL DIAGRAM PANEL 05	
		50_3023.01-A4-741- 103		01 02 03		V =L05 +S1.R		K90		TERMINAL DIAGRAM PANEL 05	
		50_3023.01-A4-741- 103		01 02 03		V =L05 +S1.R		KPE		TERMINAL DIAGRAM PANEL 05	
		50_3023.01-A4-741- 103		01 02 03		V =L05 +S1.R		Q10		CROSS CONNECT. LIST RELAY BOX 05	
		50_3023.01-A4-741- 103		01 02 03		V =L05 +S1.R		Q11		CROSS CONNECT. LIST RELAY BOX 05	
		50_3023.01-A4-741- 103		01 02 03		V =L05 +S1.R		S01		PLUG DIAGRAM CIRCUIT-BREAKER 05	
		50_3023.01-A4-741- 103		01 02 03		V =L05 +S1.R		Q15		CROSS CONNECT. LIST RELAY BOX 05	
		50_3023.01-A4-741- 103		01 02 03		V =L05 +S1.T		Q20		CROSS CONNECT. LIST PANEL 05	
		50_3023.01-A4-741- 103		01 02 03		V =L05 +S3		Q30		CROSS CONNECT. LIST SWITCHING TRUCK 05	
		50_3023.01-A4-741- 103		01 02 03		V =L05 +S3		Q31		CROSS CONNECT. LIST SWITCHING TRUCK 05	
		50_3023.01-A4-741- 103		01 02 03		V =L05 +S3		Q32		CROSS CONNECT. LIST SWITCHING TRUCK 05	
		50_3023.01-A4-741- 103		01 02 03		V =L05 +S3		S01		PLUG DIAGRAM CIRCUIT-BREAKER 05	

03	AS BUILT	5.12.2005	AD	Date	05.06.2005	US STEEL KOSICE/SLOVAKIA	 AREVA	CIRCUIT DIAGRAM AC-DISTRIBUTION PANEL	50.3023.01-A4-7474-03	S=L05	/001	Sheet 5
02	FACT -REV.	30.10.2005	BL	Drawn	Hönigke	50.3023.01						
01	Approval	30.06.2005	Hoe	Checked	Grohmann	SUBSTATION T81						
01	Approval	Date	Name	Std.		Orig:	Iss for	Iss by:	05	Type: 01 INCOMING FEEDER	D009784.01.605-3.AHA	60Sh.

00978101 Copyright as per DIN 34 to be observed!

HJ015ME
G07
ADM



03 AS BUILT 15.12.2006 AD Date 06.06.2005		US STEEL KOSTICE/SLOVAKIA		CIRCUIT DIAGRAM		50.3023.01-A4-741403		S=105	
02 FACT-REV.	30.10.2005 BL	Drawn Hanička	50.3023.01	DC DISTR.		TYP: 01		/ 601	
01 Approval	30.06.2005 Hae	Checked Grohmann	SUBSTATION T81	PANEL		INCOMING FEEDER		Sheet 6	
NO.	Alteration	Date	Named Std.	Iss. by:		D009781.01.605-3.AHA		60Sh.	

03	AS BUILT	5.12.2005	AD	Date	106.06.2005	US STEEL KOSICE/SLOVAKIA	 AREVA	CIRCUIT DIAGRAM CIRCUIT-BREAKER PANEL	MOTOR DRIVE	50_3023.01-AA-741-403	S =L05	/ L01
02	FACT - REV.	30.10.2005	AL	Drawn	Hahnicke	50_3023_01						
01	Approval	30.06.2005	Hoe	Checked	Grohmann	SUBSTATION T81						
00	Alteration			Date		Orig.						
				Iss.far		Iss.by:		05	Type: 01 INCOMING FEEDER	D009781.01_605-3_AHA	605h.	

00978101 Copyright as per DIN 34 to be observed!

HJ015NE
MO1
LO5
ADAM

07.12.2006

03	AS BUILT	15.12.2006	AD	Date	06.06.2005	ISS	STEEL KOSICE/SLOVAKIA
02	FACT. -REV.	30.10.2005	BL	Drawn	Hänticke	50.3023.01	
01	Approval	30.06.2005	Hoe	Check	Grohmann	SUBSTATION T81	
NO.	Alteration	Date	Name	Std.	Iss. by:	Iss. for:	Orig.

AREVA

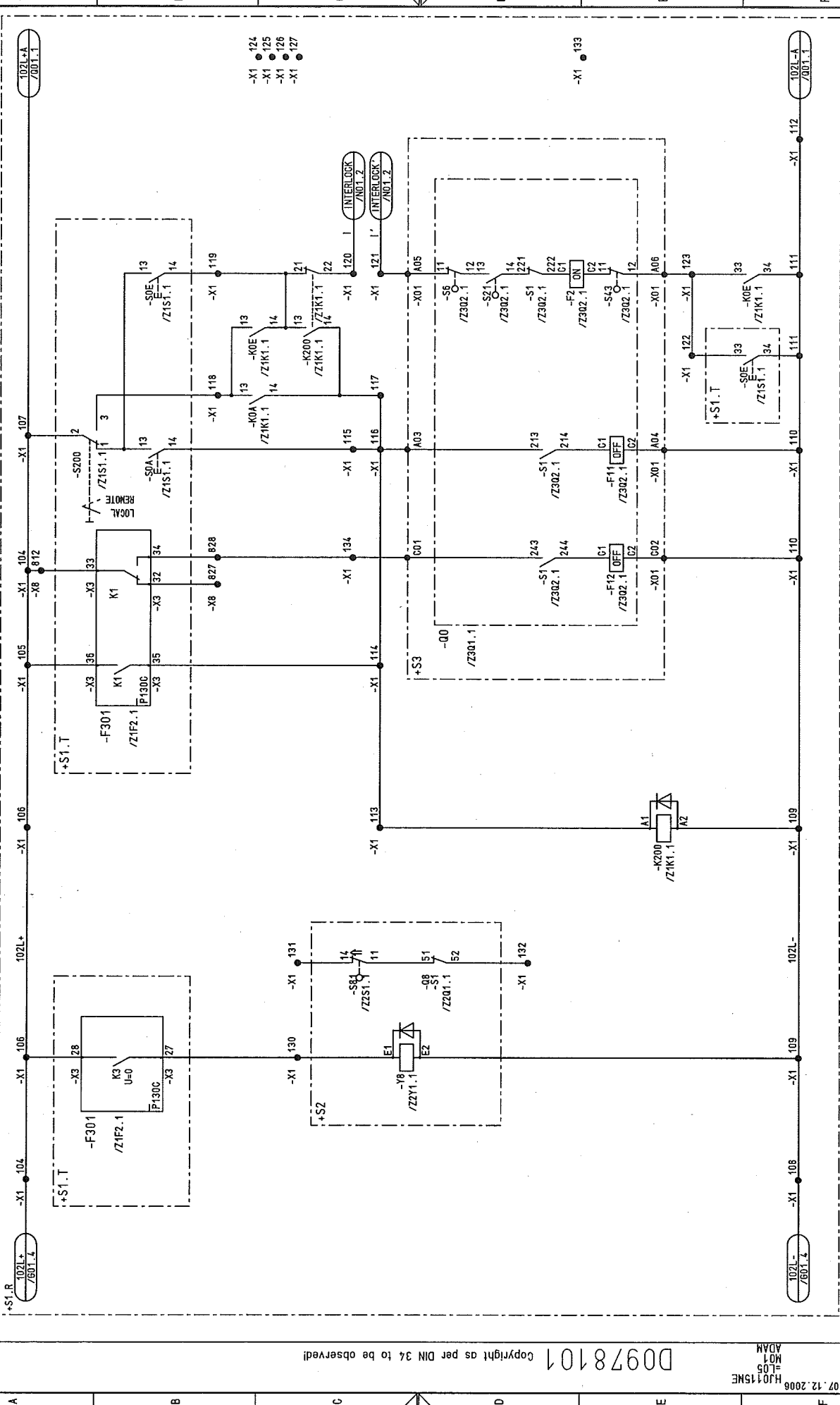
CIRCUIT DIAGRAM
CONTROL
PANEL

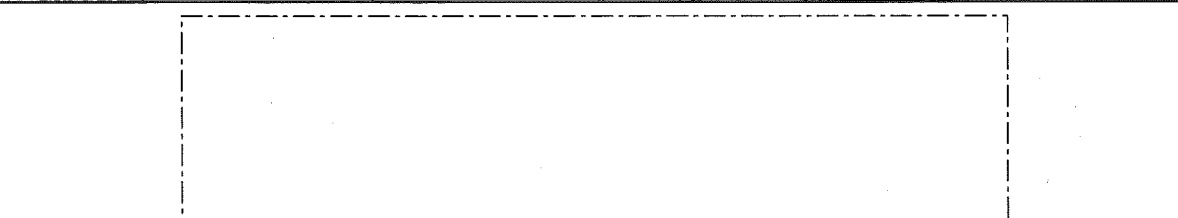
50.3023.01-AL-741-03

S-L05

Typ: 01
INCOMING FEEDER
D009781.01.605-3.AHA

Sheet 8
60Sh



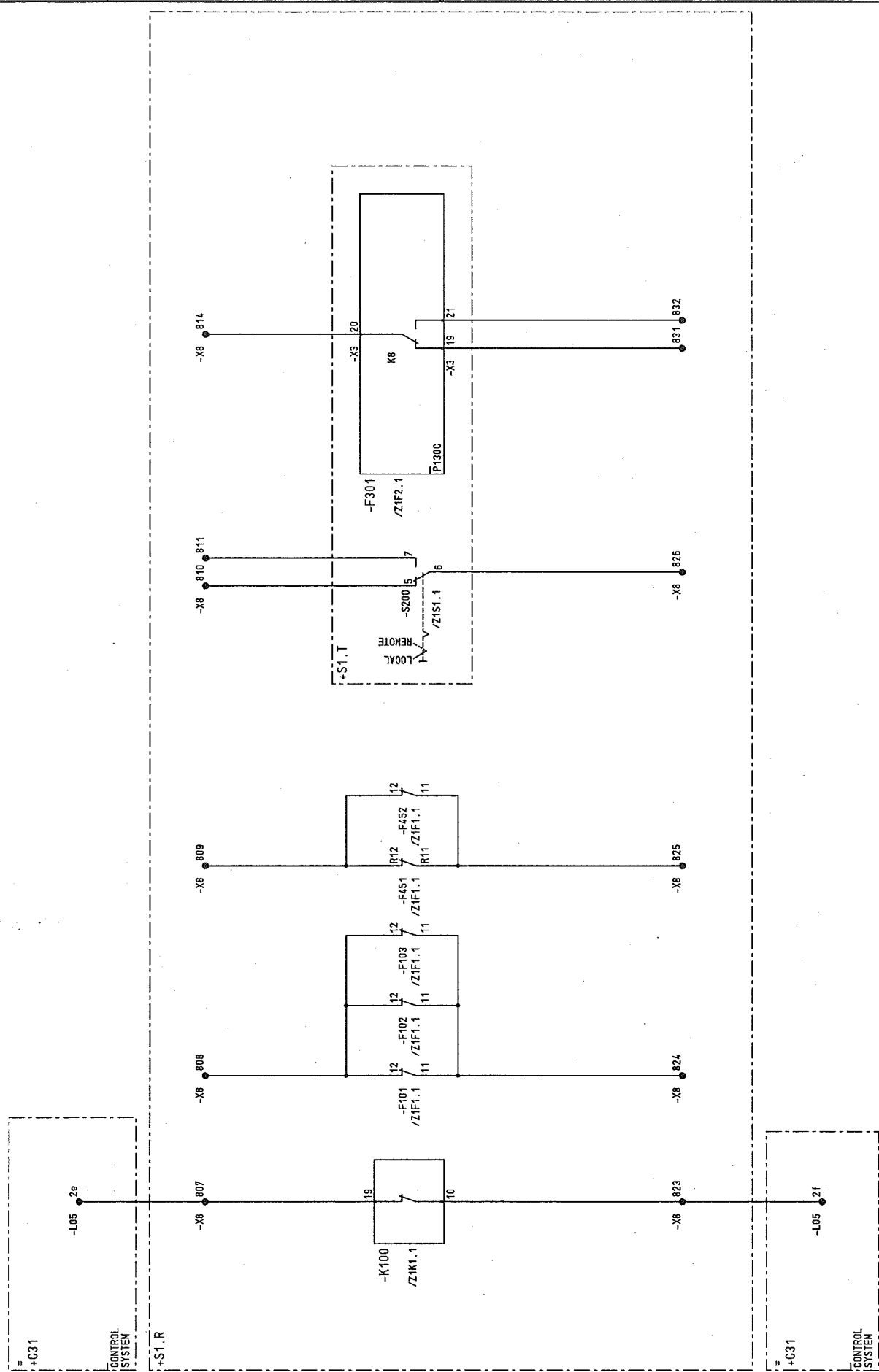


03	AS BUILT	5.12.2006	AD	Date	06.06.2005	US STEEL KOSICE/SLOVAKIA	 AREVA	CIRCUIT DIAGRAM		50_3023.01-A4-741-403		S =L05	
02	FACT -REV.	30.10.2005	BL	Drawn	Hönliche	50_3023_01		INTERFACE					
01	Approval	30.06.2005	Hoe	Checked	Grohmann	SUBSTATION T81		PANEL		Type: 01		Sheet 11	
NO.	Alteration	Date	Name	Std.		Orig.	iss.for	iss.by:	05	INCOMING FEEDER		D009781.01.605-3.AHA	
												605h.	

D0978101 Copyright as per DIN 34 to be observed!

07.12.2008
HJ015ME
L05
003
ADAM

03	AS BUILT	5.12.2005	AD	Date	05.06.2005	US STEEL KOSTICE/SLOVAKIA	CIRCUIT DIAGRAM	50_3023.01-A4-741-403	S=L05	/ 003
02	FACT.-REV.	30.10.2005	BL	Drawn	Hönlücke	50_3023.01	INTERFACE			
01	Approval	30.06.2005	Hec	Checked	Grohmann	SUBSTATION T81	PANEL			
NO.	Alteration	Date	Name	Std.	Iss. for	Iss. by:	05	INCOMING FEEDER	D009781.01.605-3.AHA	Sheet 12 60Sh.



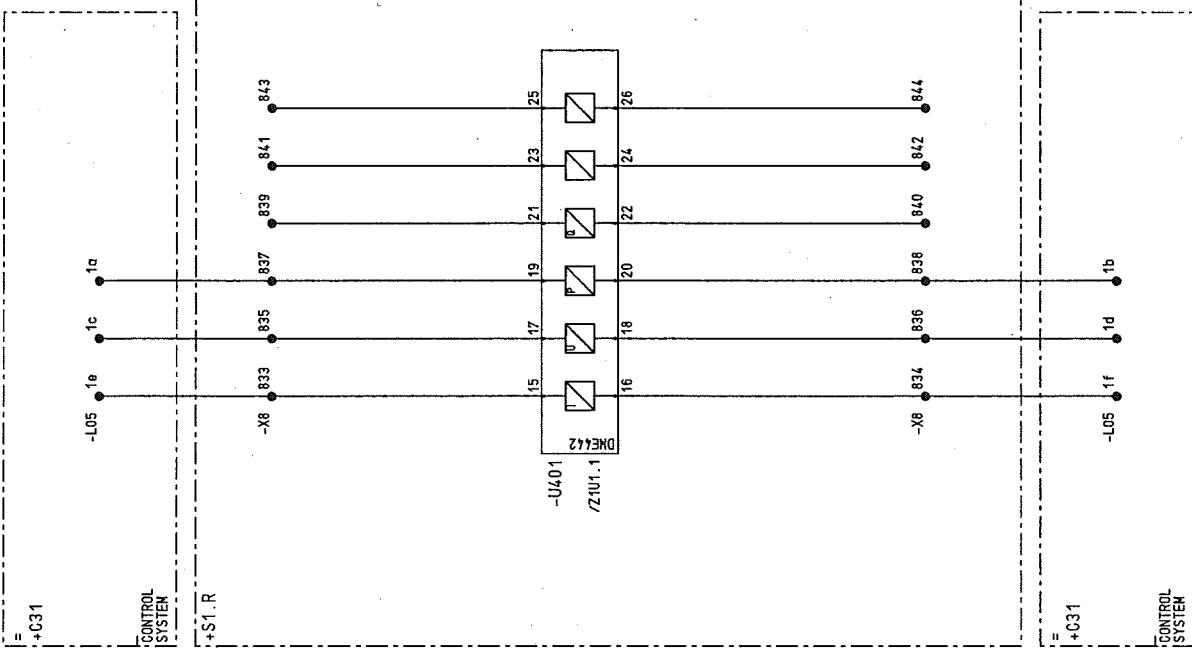
DOUBLE THROW SWITCH
LOCAL / REMOTE

BREAKER TRIPPING M.C.B. TRIPPED

FAULT

00978101 Copyright as per DIN 34 to be observed

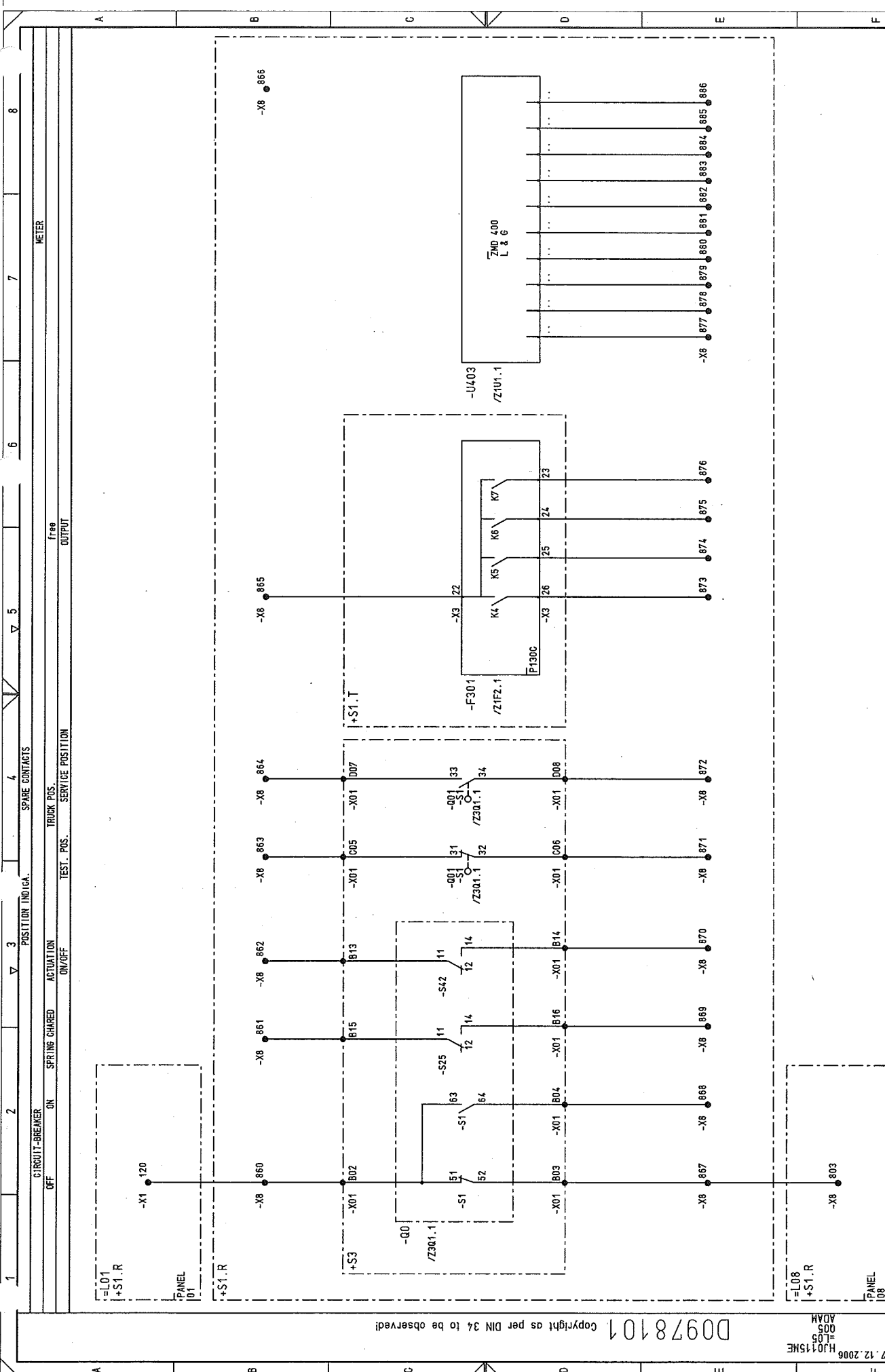
07.12.2006
HJ0115ME
=L05
ADAM



03	AS BUILT	15.12.2006	AD	Date	06.06.2005	US STEEL KOSICE/SLOVAKIA
02	FACT.-REV.	30.10.2005	BL	Drawn	Hünticke	50.3023.01
01	Approval	30.06.2005	Hae	Checked	Grohmann	SUBSTATION T81
NO.	Alteration	Date	Name	Std.	Orig.	Iss. for

AREVA		CIRCUIT DIAGRAM	
INTERFACE		PANEL	
05		05	
Iss. by:		Iss. for	

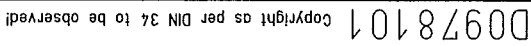
50.3023.01-A4-741-403		S=L05	
Typ: 01		INCOMING FEEDER	
D009781.01.605-3.AHA		Sheet 13	
60Sh.		8	



NO.		Alteration	Date	Name/Std.	Orig.	Iss. for	Iss. by:	PANEL 05		CIRCUIT DIAGRAM SPARE CONTACTS		50.3023.01-A4-741-403		S	L05	/ 005		Sheet 12	60Sh
03		AS BUILT	15.12.2005	AD	Date 10.06.2005	US STEEL KOSICE/SLOVAKIA		AREVA											
02		FACT. -REV.	30.10.2005	BL	Drawn/Hnticke	50.3023.01													
01		Approval	30.06.2005	Hra	Check/Grahmann	SUBSTATION T81													
1		Alteration	Date	Name/Std.	Orig.	Iss. for	Iss. by:												
2																			
3																			
4																			
5																			
6																			
7																			
8																			

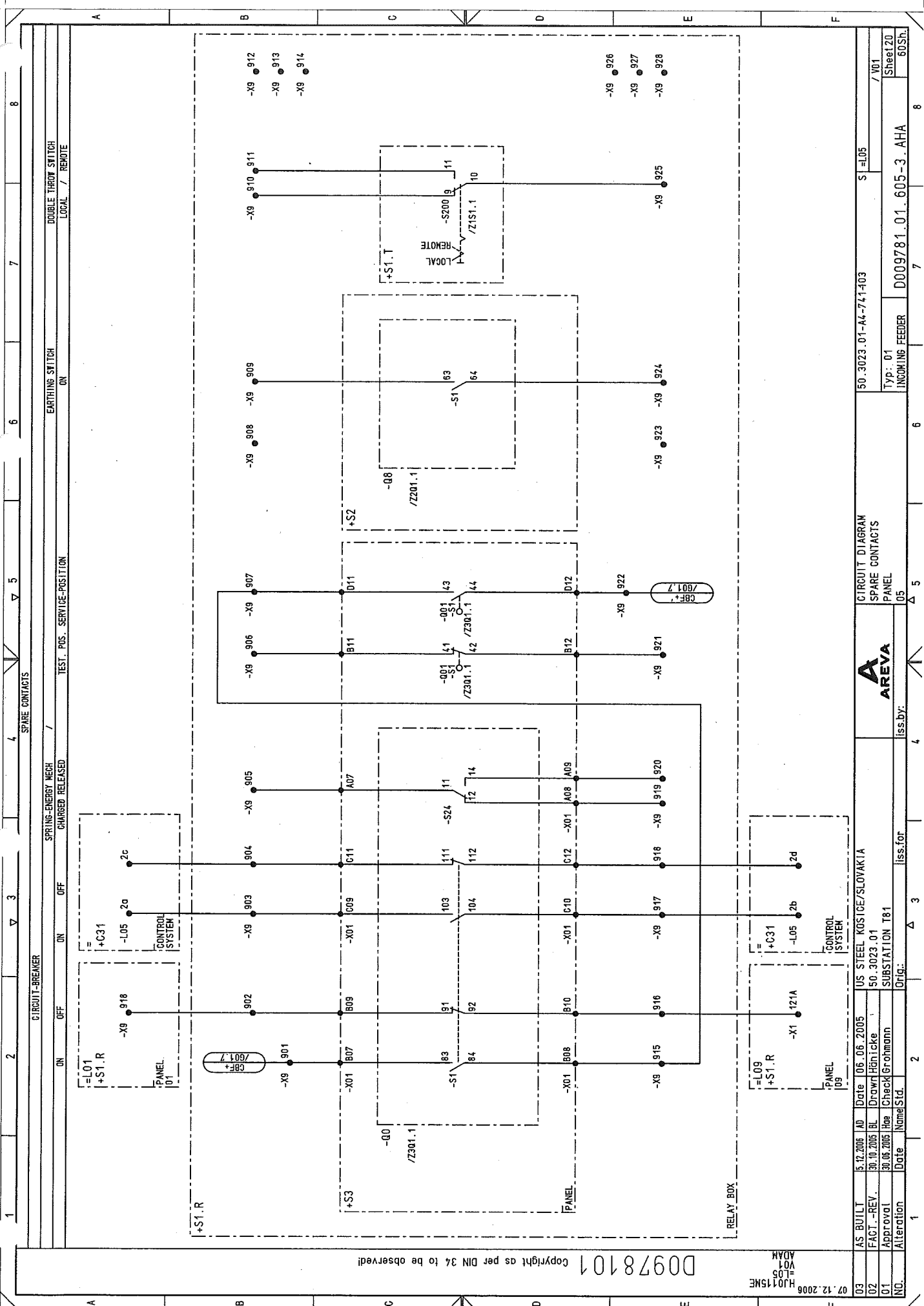
D0978101 Copyright as per DIN 34 to be observed!

HJ0145ME
L05
ADOM



03	AS BUILT	5.12.2006	AD	05.06.2005	US STEEL KOSICE/SLOVAKIA		 AREVA	CIRCUIT DIAGRAM		50_3023_01-AA-747403 S=105	Sheet 15 60SH
02	FACT.-REV.	30.10.2005	BL	Drawn Hählicke	50_3023_01	SIGNALLING		PANEL			
01	Approval	30.05.2005	Hra	Check Großmann	SUBSTATION T81	Type: 01		INCOMING FEEDER			
NO.	Alteration	Date	Name/Std.	Date	Orig.	Iss. for	Iss. by:	05		D009784.01.605-3.AHA	

03	AS BUILT	15.12.2006	AD	Date	106.06.2005	US STEEL KOSICE/SLOVAKIA	 AREVA	CIRCUIT DIAGRAM		50.3023.01-44-741403		S=L05		
02	FACT.-REV.	30.10.2005	BL	Drawn	Hönlücke	50.3023.01		IVIS					/ T02	
01	Approval	30.06.2005	Hoe	Checked	Grohmann	SUBSTATION T81		PANEL						
NO.	Alteration	Date	Name	Std.		Orig.	iss.for	iss.by:	05	INCOMING FEEDER		D009781.01.605-3.AHA		
60Sh.														

[illegible]

07.12.2006 HJ015ME ZT1 ADAM

1		2	3	4	5	6	7	8
1		M.C.B. Manuf. : GE POWER CONTROLS Type:EP61 C6 AUXILIARY SWITCH HH Rated current : 6A Technical components per device : CB SH/HH-R Auxiliary switch		CHARACTERISTIC : C Type : CB SH/HH-R Ordering number : 672570				
2		M.C.B. Manuf. : GE POWER CONTROLS Type:EP102 UC B6 AUXILIARY SWITCH HH Rated current : 6A Technical components per device : CB SH/HH-R Auxiliary switch		CHARACTERISTIC : B Type : CB SH/HH-R Ordering number : 672570				
1		M.C.B. Manuf. : GE POWER CONTROLS Type:EP102 UC C0,5 AUXILIARY SWITCH HH Rated current : 0,5A Technical components per device : CB SH/HH-R Auxiliary switch		CHARACTERISTIC : C Type : CB SH/HH-R Ordering number : 672570				

D0978101 Copyright as per DIN 34 to be observed!

07.12.2006
HJ015ME
Z1F2
ADAH

1	2	3	4	5	6	7	8	
STUCK- TITTY	DESCRIPTION, DESIGN, TECHNICAL DATA APPLICATION	SETTINGS	MANUFACTURER, TYPE, ORDERING DATA MOUNTING	APPA. DESIG.	APPARATUS SYMBOL DIAGRAM REFERENCE TO INDIVIDUAL TREATMENT (CIRCUIT DIAGRAM, SHEET NO., CIRCUIT NO.)	WITH REFERENCES TO DETAILS (CIRCUIT DIAGRAM, SHEET NO., CIRCUIT NO.)	REMARK	
1	MONIT.- PROTECTION MOTOR PROTECTION AUXILIARY VOLTAGE : DC24-60V/DC110-250V/ Technical components per device		Manuf.: AREVA Ord.No.: M100M P130-98903020-401-301 Type: P130C IN=AC 1/5 UN=AC 50-130 fN=50/60Hz : AC100-230V Type Ordering number		Cross references to the item groups in the circuit diagram Cross references to a separate, more detailed documenton Cross references to grafical layout incl. single pins			
	Application	Settings	Location	Item designation				
	/003.6		+ST.1	-F301				
	/001.2							
	/001.4							
	/001.6							
	/001.8							
	/001.9							
	/001.4							
	/001.6							
	/001.8							
	/001.9							
	/001.4							
	/001.6							
	/001.8							
	/001.9							
	/001.4							
	/001.6							
	/001.8							
	/001.9							
	/001.4							
	/001.6							
	/001.8							
	/001.9							
	/001.4							
	/001.6							
	/001.8							
	/001.9							
	/001.4							
	/001.6							
	/001.8							
	/001.9							
	/001.4							
	/001.6							
	/001.8							
	/001.9							
	/001.4							
	/001.6							
	/001.8							
	/001.9							
	/001.4							
	/001.6							
	/001.8							
	/001.9							
	/001.4							
	/001.6							
	/001.8							
	/001.9							
	/001.4							
	/001.6							
	/001.8							
	/001.9							
	/001.4							
	/001.6							
	/001.8							
	/001.9							
	/001.4							
	/001.6							
	/001.8							
	/001.9							
	/001.4							
	/001.6							
	/001.8							
	/001.9							
	/001.4							
	/001.6							
	/001.8							
	/001.9							
	/001.4							
	/001.6							
	/001.8							
	/001.9							
	/001.4							
	/001.6							
	/001.8							
	/001.9							
	/001.4							
	/001.6							
	/001.8							
	/001.9							
	/001.4							
	/001.6							
	/001.8							
	/001.9							
	/001.4							
	/001.6							
	/001.8							
	/001.9							
	/001.4							
	/001.6							
	/001.8							
	/001.9							
	/001.4							
	/001.6							
	/001.8							
	/001.9							
	/001.4							
	/001.6							
	/001.8							
	/001.9							
	/001.4							
	/001.6							
	/001.8							
	/001.9							
	/001.4							
	/001.6							
	/001.8							
	/001.9							
	/001.4							
	/001.6							
	/001.8							
	/001.9							
	/001.4							
	/001.6							
	/001.8							
	/001.9							
	/001.4							
	/001.6							
	/001.8							
	/001.9							
	/001.4							
	/001.6							
	/001.8							
	/001.9							
	/001.4							
	/001.6							
	/001.8							
	/001.9							
	/001.4							
	/001.6							
	/001.8							
	/001.9							
	/001.4							
	/001.6							
	/001.8							
	/001.9							
	/001.4							
	/001.6							
	/001.8							
	/001.9							
	/001.4							
	/001.6							
	/001.8							
	/001.9							
	/001.4							
	/001.6							
	/001.8							
	/001.9							
	/001.4							
	/001.6							
	/001.8							
	/001.9							
	/001.4							
	/001.6							
	/001.8							
	/001.9							
	/001.4							
	/001.6							
	/001.8							
	/001.9							
	/001.4							
	/001.6							
	/001.8							
	/001.9							
	/001.4							
	/001.6							
	/001.8							
	/001.9							
	/001.4							
	/001.6							
	/001.8							
	/001.9							
	/001.4							
	/001.6							
	/001.8							
	/001.9							
	/001.4							
	/001.6							
	/001.8							
	/001.9							
	/001.4							
	/001.6							
	/001.8							
	/001.9							
	/001.4							
	/001.6							
	/001.8							
	/001.9							
	/001.4							
	/001.6							
	/001.8							
	/001.9							
	/001.4							
	/001.6							
	/001.8							
	/001.9							
	/001.4							
	/001.6							
	/001.8							
	/001.9							
	/001.4							
	/001.6							
	/001.8							
	/001.9							
	/001.4							
	/001.6							
	/001.8							
	/001.9							
	/001.4							
	/001.6							
	/001.8							
	/001.9							
	/001.4							
	/001.6							
	/001.8							
	/001.9							
	/001.4							
	/001.6							
	/001.8							
	/001.9							
	/001.4							
	/001.6							
	/001.8							
	/001.9							
	/001.4							
	/001.6							
	/001.8							
	/001.9							
	/001.4							
	/001.6							
	/001.8							
	/001.9							
	/001.4							
	/001.6							
	/001.8							
	/001.9							
	/001.4							
	/001.6							
	/001.8							
	/001.9							
	/001.4							
	/001.6							
	/001.8							
	/001.9							
	/001.4							
	/001.6							
	/001.8							
	/001.9							
	/001.4							
	/001.6							
	/001.8							
	/001.9							
	/001.4							
	/001.6							
	/001.8							
	/001.9							
	/001.4							
	/001.6							
	/001.8							
	/001.9							
	/001.4							
	/001.6							
	/001.8							
	/001.9							
	/001.4							
	/001.6							
	/001.8							
	/001.9							
	/001.4							
	/001.6							
	/001.8							
	/001.9							
	/001.4							
	/001.6							
	/001.8							
	/001.9							
	/001.4							
	/001.6							
	/001.8							
	/001.9							
	/001.4							
	/001.6							
	/001.8							
	/001.9							
	/001.4							
	/001.6							
	/001.8							
	/001.9							
	/001.4							
	/001.6							

D0978101 Copyright as per DIN 34, to be observed!

07.12.2006
HJ015ME
Z1F20
ADAM

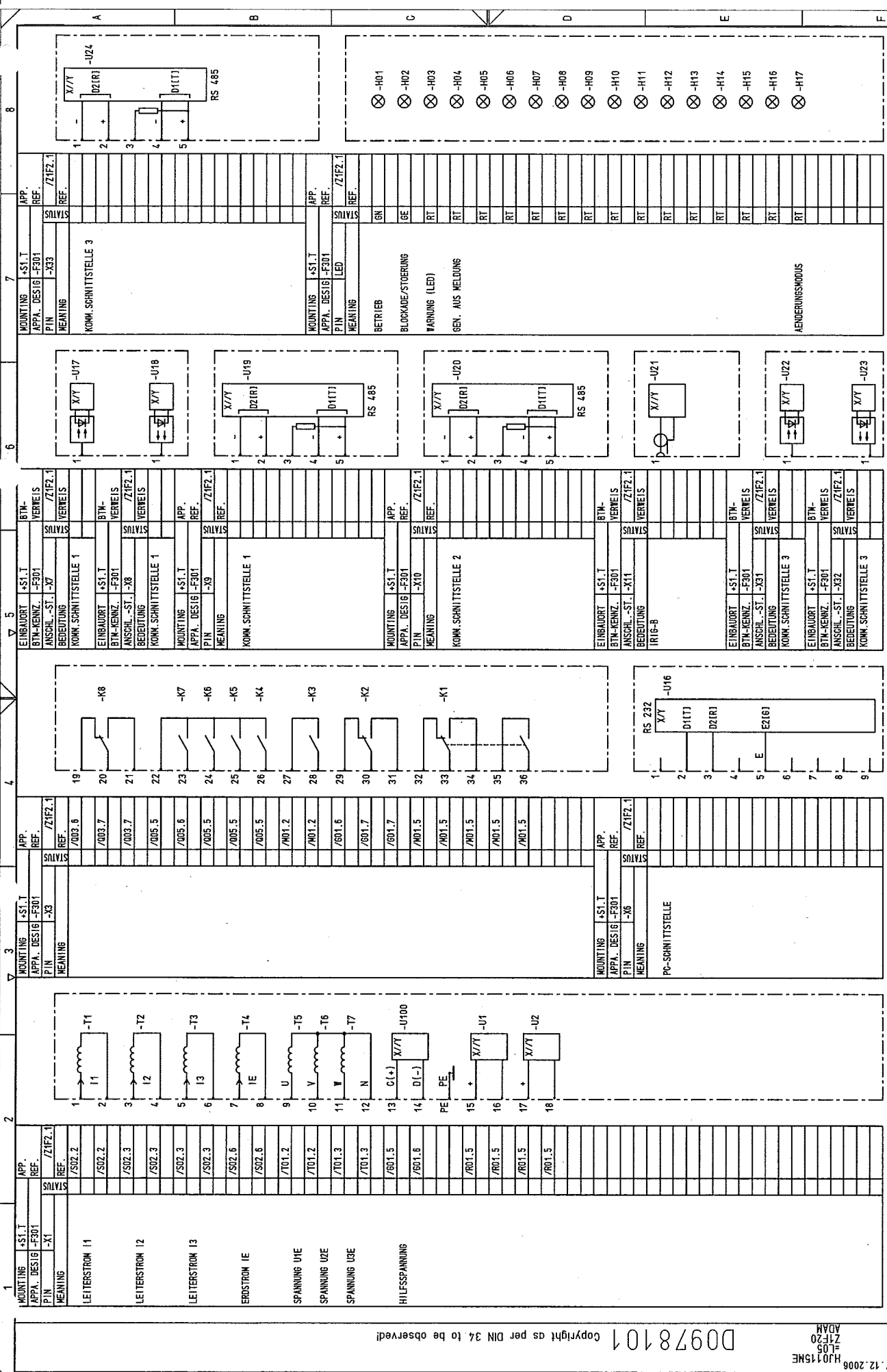
03	AS BUILT	5.12.2005	AD	Date	06.06.2005	US STEEL KOSTICE/SLOVAKIA
02	FACT.-REV.	30.10.2005	BL	Drawn	Hänicke	50.3023.01
01	Approval	30.06.2005	Hoe	Checked	Brachmann	SUBSTATION T81
NO.	Alteration	Date	Name	Std.	Orig.	



05	ISS.BY:	PANEL
05	ISS.BY:	PANEL

01	INCOMING FEEDER	D009781.01.605-3.AHA
01	INCOMING FEEDER	D009781.01.605-3.AHA

05	S	=L05
05	S	=L05



01	Z1F20	605L
01	Z1F20	605L

GEHÄUSE
SCHUTZERDUNG

PE



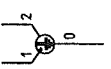
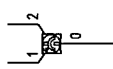
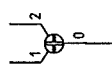
03	AS BUILT	5.12.2005	AD	Date	06.06.2005	US STEEL KOSICE/SLOVAKIA		LIST OF EQUIPMENT		50.3023.01-A4-741-403		S=L05		
02	FACT.-REV.	30.10.2005	BL	Drawn	Háňtícke	50.3023.01								/ ZIF21
01	Approval	30.06.2005	Hke	Check	Grohmann	SUBSTATION T81		PANEL	05	Typ: 01	D009781.01.605-3.AHA		60Sh.	Sheet 24
INQ.		Alteration	Date	Name	Std.	Orig.:	Iss. for	Iss. by:						

D0978101 Copyright as per DIN 34 to be observed!

07.12.2008
HJ0115ME
Z141
ADAH

03	AS BUILT	15.12.2006	AD	Date	06.06.2005	US STEEL KOSICE/SLOVAKIA	LIST OF EQUIPMENT	50.3023.01-44-741-403	S	L05	/ ZHI
02	FACT.-REV.	30.10.2005	BL	Drawn	Hänicke	50.3023.01					
01	Approval	30.06.2005	Hoe	Checked	Grohmann	SUBSTATION T81	PANEL				
NO.	Alteration	Date	Named	Std.	Orig.	Iss.for	Iss.by:	Typ: 01	INCOMING FEEDER	D009781.01.605-3.AHA	Sheet 25
							05				60Sh

1	STELLUNGSMELDER RUECKWELDER	Manuf. : MessMa Ord.No. : EST-L-1746-08-330-21 TRENNSCHALTER	2	▽	3	Type: EST-L	8
	Technical components per device	220VAC/220VDC	Type			: GELB	
	Ordering number						
	Application	ON/OFF	Settings	Location	Item designation		
	CIRCUIT-BREAKER			+ST.T	-H0		
1	STELLUNGSMELDER RUECKWELDER	Manuf. : MessMa Ord.No. : EST-L-1746-08-231-21 SCHALTWAGEN	2	▽	3	Type: EST-L	8
	Technical components per device	220VAC/220VDC	Type			: GELB	
	Ordering number						
	Application	SERVICE POS. TEST POS.	Settings	Location	Item designation		
	SWITCHING TRUCK			+ST.T	-H01		
1	STELLUNGSMELDER RUECKWELDER	Manuf. : MessMa Ord.No. : EST-L-1746-08-131-21 ERDER	2	▽	3	Type: EST-L	8
	Technical components per device	220VAC/220VDC	Type			: GELB	
	Ordering number						
	Application	OFF/ON	Settings	Location	Item designation		
	EARTHING SWITCH			+ST.T	-H0		



ISS.BY:

03	AS BUILT	5.12.2006	AD	Date	06.06.2005	US STEEL KOSICE/SLOVAKIA
02	FACT -REV.	30.10.2005	BL	Drawn	Hänicke	50_3023_01
01	Approval	30.06.2005	He	Checked	Grohmann	SUBSTANTION T81
NO.	Alteration					Orig.: Iss.

03	AS BUILT	30.12.2005	AD	Date	05.06.2005	US STEEL KOSICE/SLOVAKIA	 AREVA	LIST OF EQUIPMENT		S0-3023.01-A4-744-403		S = L05	/ ZP1	
02	FACT - REV.	30.10.2005	BL	Drawn	Hönicke	50-3023.01			PANEL					
01	Approval	30.06.2005	Hoe	Check	Grohmann	SUBSTATION T81			TYP: 01		INDWING FEEDER		D009781.01.605-3.AHA	Sheet 27 / 605th
NO.	Alteration	Date		Named	Std.	Orig.		iss.for		iss.by:	05			

D0978101 Copyright as per DIN 34 to be observed!

H3015ME
ZIR1
ADAM

1

03	AS BUILT	5.12.2005	AD	Date	06.06.2005	US STEEL KOSICE/SLOVAKIA	LIST OF EQUIPMENT	50.3023.01-A4-741-403	S	=L05	7 ZIR1
02	FACT.-REV.	30.10.2005	BL	Drawn	Hönicke	50.3023.01					Sheet 28
01	Approval	30.06.2005	Hoo	Check	Grohmann	SUBSTATION T81					60Sh.
NO.	Alteration	Date	Name	Std.	Orig.	Iss. for	iss. by:	Typ: 01	INCOMING FEEDER	D009781.01.605-3 AHA	

1

2

3

4

5

6

7

8

A

B

C

D

E

F

1

2

3

4

5

6

7

8

1 RESISTOR
Manuf.: Heine Resistors GmbH Type: EFM 60x300
Ord. No.: 742011/20027
DAMPING

RESISTANCE : 22 Ohm +/- 10% POWER : 430W
Technical components per device Type Drawing number

Application
DAMPING RESISTANCE

Settings
Location
+S1.R

Item designation
-R452



/T01.6 /T01.6

[illegible]

00978101 Copyright as per DIN 34 to be observed!

07.12.2008
HJ015ME
Z103
ADAM

1		2		3		4		5		6		7		8	
TRANSUCER		Manuf. : GOSSEN		Type: SINEAX DME24/442											
PROGRAMMIERBARER MULTI-MESSUMFORMER		Ord. No. :													
INPUT		OUTPUT													
Technical components per device		Type		Ordering number											
Application		Settings		Location		Item designation									
MULTIFUNCTION CONVERTER				+S1.R		-U401									
MULTIFUNCTION CONVERTER				+S1.R		-U402									
1 METER		Manuf. : LANDIS & GYR		Type: ZMD 400											
Ord. No. :															
Technical components per device		Type		Ordering number											
Application		Settings		Location		Item designation									
METER				+S1.R		-U403									

03	AS BUILT	5.12.2005	AD	Date	06.06.2005	US STEEL KOSICE/SLOVAKIA	LIST OF EQUIPMENT	50.3023.01-A4-741-403	S	=L05
02	FACT.-REV.	30.10.2005	BL	Date	Drawn	Hänicke	50.3023.01			
01	Approval	30.06.2005	Hoe	Date	Checked	Gröbmann	SUBSTATION T81			
NO.	Alteration	Date	Named	Std.	Iss. for	Iss. by:	PANEL 05	Typ: 01	INCOMING FEEDER	D009781.01.605-3.AHA



PANEL 05

LIST OF EQUIPMENT

50.3023.01-A4-741-403

S =L05

/Z101

Sheet 30

60Sh.

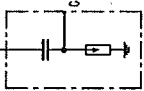
D0978101 Copyright as per DIN 34 to be observed!

07.12.2006
HJ0115ME
L05
ZZC1
ADAM

3 CAPACITIVE COUPLING Manuf. AREVA Sachsenwerk Type:HO-SYSTEM

SERIES : W1
Technical components per device : Ordering number

Application	Settings	Location	Item designation
CAP. TAPPING		+S2	-CL1
CAP. TAPPING		+S2	-CL2
CAP. TAPPING		+S2	-CL3



03	AS BUILT	5.12.2006	AD	Date	06.06.2005	US STEEL KOSICE/SLOVAKIA
02	FACT.-REV.	30.10.2005	BL	Drawn	Hänicke	50.3023.01
01	Approval	30.06.2005	Hoe	Checked	Gröbmann	SUBSTATION T81
NO.	Alteration	Date	Named	Sid.	Orig.	Iss.for

LIST OF EQUIPMENT	50.3023.01-A4-741-403	S=L05
PANEL	05	Typ: 01
INCOMING FEEDER	D009781.01.605-3.AHA	Sheet 31
		60Sh.

8

003	AS BUILT	5.12.2005	10	Date	05.06.2005	US STEEL KOSICE/SLOVAKIA	 AREVA	LIST OF EQUIPMENT		50_3023_01-44-741403	S=L05	/ ZP1 Sheet 32 60Sp.
001	FACT. - REV.	30.10.2005	BL	Drawn	Hänticke	50_3023_01						
002	Approval	30.06.2005	10a	Check	Grohmann	SUBSTATION T81						
N0.	Alteration	Date	Name	Sid.	Orig.	Iss. for	Iss. by:	05	PANEL	Type: 01	D009781.01.605-3_AHA	
INCOMING FEEDER												

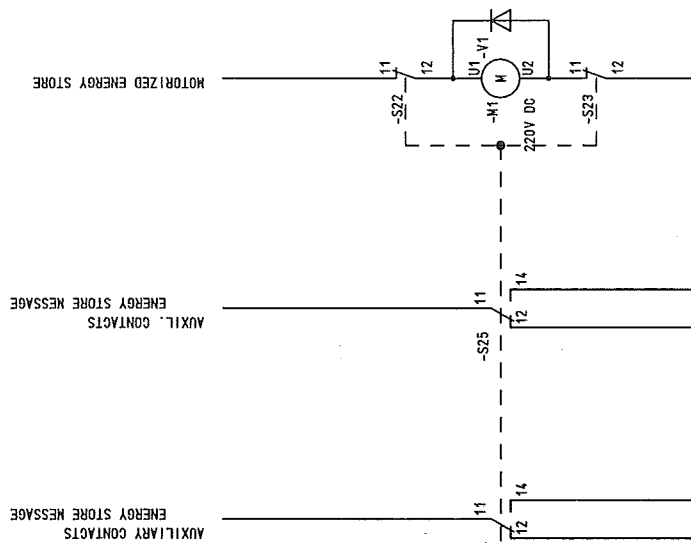
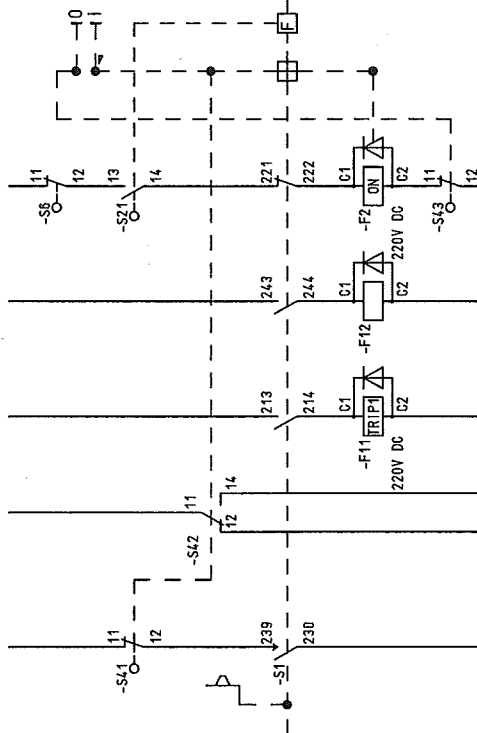
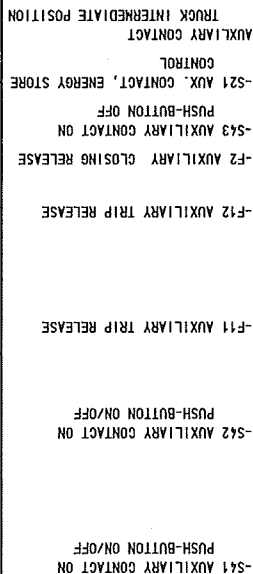
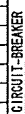
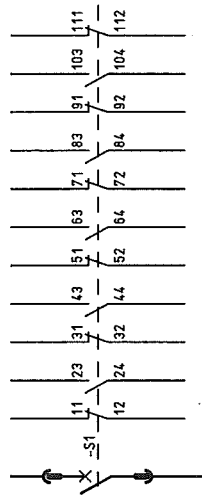
AS BUILT	5.2.2005	10	Date	06.06.2005	US STEEL KOSICE/SLOVAKIA		LIST OF EQUIPMENT		50.3023.01-A4-741403		S = L05	
FACT. - REV.	30.10.2005	BL	Drawn	Hnaticke	50.3023.01		PANEL		Type: 01		Sheet 34	
Approval	30.06.2005	Bae	Check	Grohmann	SUBSTATION T81		05		INCOMING FEEDER		60Sh.	
Alteration	Date	Name	Sig.	Orig.	iss.for	iss.by:						

D0978101 Copyright as per DIN 34 to be observed!

07.12.2008
H0115NE
Z001
ADAM

1	2	3	4	5	6	7	8
STÜCK- TITEL	DESCRIPTION, DESIGN, TECHNICAL DATA APPLICATION	SETTINGS	MANUFACTURER, TYPE, ORDERING DATA MOUNTING	APPA. DESIG.	APPARATUS SYMBOL DIAGRAM REFERENCE TO INDIVIDUAL TREATMENT (CIRCUIT DIAGRAM, SHEET NO., CIRCUIT NO.)	WITH REFERENCES TO DETAILS (CIRCUIT DIAGRAM, SHEET NO., CIRCUIT NO.)	REMARK
1	CIRCUIT-BREAKER	MANUF.: ALSTOM PO NO.:	TYPE ECA 12-40-12-21				
TECHNICAL COMPONENTS							
TYP							
ORDER NO.							
APPLICATION							
CIRCUIT-BREAKER							
MOUNTING							
BTM IDENTIFIER							
+S3							
-00							
TYP:							
HERST.: ALSTOM							
BEST. NR.:							
48_POL							
TECHNISCHE KOMPONENTEN							
TYP							
BESTELLNUMMER							
VERWENDUNGSZEICH							
AUXILIARY SWITCH							
EINBAUORT							
+S3							
EINSTELLDATEN							
BTM-KENNZEICHEN							
-001							
/001.3							
/002.5							
/005.3							
/001.4							
/001.3							
/002.5							
/005.4							
/001.5							
TRENNST.							
BETRIEBSST.							
11							
12							
21							
22							
31							
32							
41							
42							
13							
14							
23							
24							
33							
34							
43							
44							
LIST OF EQUIPMENT							
150.3023.01-A4-741-403							
S=L05							
PANEL							
05							
Typ: 01							
INCOMING FEEDER							
D009781.01.605-3.AHA							
/ Z001							
Sheet 37							
60Sh.							

-S1 AUXILIARY SWITCH

[illegible]

03	AS BUILT	5.12.2006	AD	Date	106.06.2005	US STEEL KOSICE/SLOVAKIA		TERMINAL DIAGRAM	50_3023_01-A4-7471-03	V = L05 ±S1.R	/ K10
02	FACT - REV.	30.10.2005	BL	Drawn	Hönicke	50_3023_01					
01	Approval	30.06.2005	Hoe	Checked	Grohmann	SUBSTATION T81					
01	Approval			Date	Name	Std.	Orig.	Iss for	Iss by:	05	Type: 01 INCOMING FEEDER D009781.01.605-3.AHA 60Sh.

03	AS BUILT	AD	Date	06.06.2005	US STEEL KOSICE/SLOVAKIA		TERMINAL DIAGRAM		50_3023.01-A4-741403		V=L05
02	FACT.-REV.	BL	Drawn	Hänicke	50_3023_01						+S1.R
01	Approval	30.06.2005	Koa	Check	Grohmann		SUBSTATION T81	PANEL	Typ: 01	/ K11	
NO.	Alteration	Date	NameStd.	Orig.	Iss. for		Iss.by:	05	INCOMING FEEDER	D009781.01.605-3.AHA	605SL

AREVA

03	AS BUILT	5.12.2005	AD	Date	06.06.2005	US STEEL KOSICE/SLOVAKIA		TERMINAL DIAGRAM		50.3023.01-A4-7741403	V = L05
02	FACT. -REV.	30.10.2005	BL	Drawn	Hanicke	50.3023.01		PANEL			\$S1.R
01	Approval	30.06.2005	Hoe	Checked	Grochmann	SUBSTATION 781		Type: 01			
NO.	Alteration	Date	Named	Std.		Orig.:	Iss.by:	INGOMING FEEDER		D009781.01.605-3.AHA	60Sh.

[illegible]

03	AS_BUILT	15.12.2005	AD	Date	10.06.2005	US STEEL KOSICE/SLOVAKIA	 AREVA	TERMINAL DIAGRAM		50_3023_01-A4-741403		V=1.05	
02	FAGT.-REV.	30.10.2005	BL	Drawing	Hanticke	50_3023_01			PANEL		Type: 01		/ K51
01	Approval	30.06.2005	Hoe	Check	Grohmann	SUBSTATION T81			05		INCOMING FEEDER		Sheet L5
NO.	Alteration	Date	Name	Std.	Orig.	Iss. for	Iss. by:			D009781.01.605-3_AHA		60Sh.	

03	AS BUILT	5.12.2006	AD	Date	06.06.2005	US STEEL KOSICE/SLOVAKIA	 AREVA	TERMINAL DIAGRAM	50.3023.01-A4-741403		V = L05
01	FAST - REV.	30.10.2005	BL	Drawing	Hönlücke	50.3023.01			PANEL	TYP. 01	/ K60
02	Approval	30.06.2005	lHe	Check	Grohmann	SUBSTAT ION 181				INCOMING FEEDER	Sheet 16
NO.	Alteration	Date	Name	Std.	Orig.	iss. for	iss. by:	05		D009781.01.605-3.AHA	605St.

03	AS BUILT	5.12.2005	AD	Date	05.06.2005	US STEEL KOSICE/SLOVAKIA		TERMINAL DIAGRAM	50_3023_01-A4-741403	V	±L05
	FACT. - REV.	30.10.2005	BL	Drawn	Hänticke	50_3023_01					
01	Approval	30.06.2005	He	Check	Grohmann	SUBSTATION T81					
NO.	Alteration	Date	Name/Sid.	Iss. for	Iss. by:	Orig.	05	PANEL	Typ: 01	D009784_01_605-3_AHA	Sheet 49 605th.

03	AS BUILT	5.12.2005	AD	Date	06.06.2005	US STEEL KOSICE/SLOVAKIA
01	FACT - REV.	30.10.2005	BL	Drawn	Hänicke	50. 3023.01
02	Approval	30.06.2005	He	Checked	Grohmann	SUBSTATION T81
NO.	Alteration			Noted		Grq.:
						Iss.:

AREVA

CROSS CONNECTION

REFERENCE	POTENTIAL ITEM GR. SECTION	CABLE MATERIAL COLOR	OUTPUT TERMINAL	DESTINATION 1	DESTINATION 2	DESTINATION 3	DESTINATION 4	DESTINATION 5	DESTINATION 6
601	DC220V L+	H07V-K SW	-X0	12 -F101	1 -F102	1 -F103			
601	DC220V L-	H07V-K SW	-X0	14 -F101	3 -F102	3 -F103			
601	102L+	H07V-K SW	-X1	103 -U401	13 -U402				
601	102L-	H07V-K SW	-X1	108 -U401	14 -U402				
M01	1.5MW2	H07V-K SW	-X1	117 -K0A	14 -K200				
M01	1.5MW2	H07V-K SW	-X1	118 -K0A	13 -K0E				
M01	1.5MW2	H07V-K SW	-X1	119 -K0E	14 -K200	21 -K200			
002	1.5MW2	H07V-K SW	-X8	815 -K0A	A2 -K0E	A2			
003	1.5MW2	H07V-K SW	-X8	808 -F101	12 -F102	12 -F103			
003	1.5MW2	H07V-K SW	-X8	809 -F451	R12 -F452	12			
003	1.5MW2	H07V-K SW	-X8	824 -F101	11 -F102	11 -F103			
003	1.5MW2	H07V-K SW	-X8	825 -F451	R11 -F452	11			
R01	1.5MW2	H07V-K SW	-X4	-K0A	22 -K0E	21			
R01	102L+	H07V-K SW	-X4	404 -F451	R22 -K0E	43			
R01	1.5MW2	H07V-K SW	-X4	416 -F101	22 -F102	22 -F103			
R01	1.5MW2	H07V-K SW	-X4	418 -F101	21 -F102	21 -F103			
R01	1.5MW2	H07V-K SW	-X4	419 -F451	L12 -F452	22			
R01	1.5MW2	H07V-K SW	-X4	420 -F451	L11 -F452	21			
S01	2.5MW2	H07V-K SW	-X4	-U401	3 -U402	1			
S01	2.5MW2	H07V-K SW	-U401	6 -U402	4				

Copyright as per DIN 34 to be observed!

02.12.2008 HJ015ME
0105+51
ADAM

03 AS BUILT 5.12.2005 JD Date 05.06.2005 US STEEL KOSICE/SLOVAKIA

02 FACT.-REV. 30.10.2005 BL Drawn Hönigke 50.3023.01

01 Approval 30.06.2005 Hae Check Grohmann SUBSTATION T81

Orig.: Iss. for Iss. by: AREVA

50.3023.01-A4-741-03 CROSS CONNECT. LIST RELAY BOX

Typ: 01 INCOMING FEEDER D009781.01.605-3. AHA

Sheet 52 / 605h.

CROSS CONNECTION

REFERENCE	POTENTIAL ITEM CR. SECTION	CABLE MATERIAL COLOR	OUTPUT TERMINAL	DESTINATION 1	DESTINATION 2	DESTINATION 3	DESTINATION 4	DESTINATION 5	DESTINATION 6
S01	2 2.5MM2	H07V-K SW		9 -U402	7				
S01	2 2.5MM2	H07V-K SW	-X5	3 -U402	6 -U402	9			
T01	L1 2 2.5MM2	H07V-K SW	603 -U401	2 -U402	2				
T01	L2 2 2.5MM2	H07V-K SW	606 -U401	5 -U402	5				
T01	L3 2 2.5MM2	H07V-K SW	609 -U401	8 -U402	8				
T01	N 2 2.5MM2	H07V-K SW	612 -U401	11 -U402	11				

AS BUILT		5.12.2005	AD	Date	05.06.2005	US STEEL KOSICE/SLOVAKIA	
FACT -REV.		30.10.2005	BL	Drawn	Hänicke	50.3023.01	
Approval		30.06.2005	Ree	Check	Grolmann	SUBSTATION T81	
Alteration		Date	Name	Sid.	Iss.for	Iss.by:	
						AREVA	
				GROSS CONNECT. LIST		50.3023.01-A4-741403	
				RELAY BOX		V ±05	
				PANEL		+ST.R	
				05		D009781.01.605-3. AHA	
				INCOMING FEEDER		Typ: 01	
						Sheet 53	
						60Sh.	

Copyright as per DIN 34 to be observed!

07.12.2006
H0115ME
L05+S1
ADAH
011

D0978101

CROSS CONNECTION

REFERENCE	POTENTIAL ITEM CR. SECTION	CABLE MATERIAL COLOR	OUTPUT TERMINAL	DESTINATION 1	DESTINATION 2	DESTINATION 3	DESTINATION 4	DESTINATION 5	DESTINATION 6
M01	1 1.5MM2 102L-	H07V-K SW		13 -S0E	13 -S200	1			
R01	1 1.5MM2 102L+	H07V-K SW		16 -F301 -X1	18				
R01	1 1.5MM2	H07V-K SW		21 -S0E	43				
R01	1 1.5MM2	H07V-K SW		22 -S0E	21				
S02	2 2.5MM2 L1	H07V-K SW		2 -F301 -X1	4 -F301 -X1	6			
T01	1 1.5MM2 L2	H07V-K SW		9 -P451	17 -P452	17			
T01	1 1.5MM2 L3	H07V-K SW		10 -P451	18 -P453	17			
T01	1 1.5MM2	H07V-K SW		11 -P452	18 -P453	18			

AS BUILT	5.12.2005	AD	Date	06.06.2005	US STEEL KOSTICE/SLOVAKIA	CROSS CONNECT. LIST	50.3023.01-44-741403	VI=L05
FACT. -REV.	30.10.2005	BL	Drawn	Hnietke	50.3023.01	RELAY BOX		+ST.T
Approval	30.06.2005	Hoa	Check	Grohmann	SUBSTATION T81	PANEL		
Alteration	Date	Name	Sld.	Iss. for	Iss. by:		Typ: 01	
							INCOMING FEEDER	
							D009781.01.605-3.AHA	
								Sheet 55
								60Sh.

TERMINAL DIA. , 64-POLE , CIRCUIT-BREAKER SOCKET

+S1.R -X01
 CABLE MATERIAL H05V-K 1.0mm2 SW

A			B			C			D			E			F		
+		+						+									+
1	-X1 /L01.2 H05V-K 1.0MM2 SW	101	-X8 /D02.4 H05V-K 1.0MM2 SW	817	-X1 /D01.5 H05V-K 1.0MM2 SW	134	-X3 /D01.3 H05V-K 1.0MM2 SW	313	1								
2	-X1 /L01.2 H05V-K 1.0MM2 SW	102	-X8 /D05.2 H05V-K 1.0MM2 SW	860	-X1 /D01.5 H05V-K 1.0MM2 SW	110	-X8 /D02.5 H05V-K 1.0MM2 SW	804	2								
3	-X1 /L01.6 H05V-K 1.0MM2 SW	116	-X8 /D05.2 H05V-K 1.0MM2 SW	867	-X8 /D02.5 H05V-K 1.0MM2 SW		-X8 /D02.5 H05V-K 1.0MM2 SW	818	3								
4	-X1 /L01.6 H05V-K 1.0MM2 SW	110	-X8 /D05.2 H05V-K 1.0MM2 SW	868	-X8 /D02.5 H05V-K 1.0MM2 SW		-X8 /D02.5 H05V-K 1.0MM2 SW	820	4								
5	-X1 /L01.7 H05V-K 1.0MM2 SW	121	-X0 /D01.3 H05V-K 1.0MM2 SW	5	-X8 /D05.3 H05V-K 1.0MM2 SW	863			5								
6	-X1 /L01.7 H05V-K 1.0MM2 SW	123	-X0 /D01.3 H05V-K 1.0MM2 SW	7	-X8 /D05.3 H05V-K 1.0MM2 SW	871			6								
7	-X9 /V01.4 H05V-K 1.0MM2 SW	905	-X9 /V01.2 H05V-K 1.0MM2 SW	901	-X8 /D01.3 H05V-K 1.0MM2 SW		-X8 /D05.4 H05V-K 1.0MM2 SW	864	7								
8	-X9 /V01.3 H05V-K 1.0MM2 SW	919	-X9 /V01.2 H05V-K 1.0MM2 SW	915	-X8 /D01.3 H05V-K 1.0MM2 SW		-X8 /D05.4 H05V-K 1.0MM2 SW	872	8								
9	-X9 /V01.4 H05V-K 1.0MM2 SW	920	-X9 /V01.2 H05V-K 1.0MM2 SW	902	-X9 /V01.3 H05V-K 1.0MM2 SW	903			9								
10	-X4 /R01.3 H05V-K 1.0MM2 SW	410	-X9 /V01.2 H05V-K 1.0MM2 SW	916	-X9 /V01.3 H05V-K 1.0MM2 SW	917			10								
11	-X4 /R01.3 H05V-K 1.0MM2 SW	411	-X9 /V01.4 H05V-K 1.0MM2 SW	906	-X9 /V01.3 H05V-K 1.0MM2 SW	904			11								
12	-X3 /D01.2 H05V-K 1.0MM2 SW	302	-X9 /V01.4 H05V-K 1.0MM2 SW	921	-X9 /V01.3 H05V-K 1.0MM2 SW	918			12								
13	-X3 /D01.2 H05V-K 1.0MM2 SW	309	-X8 /D05.3 H05V-K 1.0MM2 SW	862	-X8 /D05.3 H05V-K 1.0MM2 SW				13								
14	-X3 /D01.2 H05V-K 1.0MM2 SW	310	-X8 /D05.3 H05V-K 1.0MM2 SW	870	-X8 /D05.3 H05V-K 1.0MM2 SW				14								
15	-X8 /D02.3 H05V-K 1.0MM2 SW	803	-X8 /D05.2 H05V-K 1.0MM2 SW	861	-X3 /D01.3 H05V-K 1.0MM2 SW	303			15								
16	-X8 /D02.3 H05V-K 1.0MM2 SW	816	-X8 /D05.2 H05V-K 1.0MM2 SW	869	-X3 /D01.3 H05V-K 1.0MM2 SW	311			16								
+									+								

Subject to technical modifications
 Copyright as per DIN 34 to be observed

00978101
 H0115ME
 0505+51
 2005
 ADAM

03	AS BUILT	5.12.2006	AD	Date	106.06.2005	US STEEL KOSICE/SLOVAKIA	PLUG DIAGRAM	150.3023.01-A4-741-403	V	105
02	FACT.-REV.	30.10.2005	BL	Draw	Hänicke	50.3023.01	CIRCUIT-BREAKER			
01	Approval	30.06.2005	Re	Check	Grohmann	SUBSTATION T81	PANEL			
NO.	Alteration	Date	Name	Std.	Iss.for	Iss.by:	05	INCOMING FEEDER	D009781.01.605-3.AHA	8
								Typ: 01		60Sh.
								Sheet154		

CROSS CONNECTION

REFERENCE	POTENTIAL ITEM CR. SECTION	CABLE MATERIAL COLOR	OUTPUT TERMINAL	DESTINATION 1	DESTINATION 2	DESTINATION 3	DESTINATION 4	DESTINATION 5	DESTINATION 6
M01	1 1.5MM2	H07V-K SW		-08 51 -S81	11				
001	102L+ 1 1.5MM2	H07V-K SW		-08 11 -S1	-08 23				
002	1 1.5MM2	H07V-K SW		-08 31 -S1	-08 43				
T01	L1 2 2.5MM2	H07V-K SW		-F451 1 -T5L1	A				
T01	L2 2 2.5MM2	H07V-K SW		-F451 3 -T5L2	A				
T01	L3 2 2.5MM2	H07V-K SW		-F451 5 -T5L3	A				
T01	8 2 2.5MM2	H07V-K SW		-F452 1 -T5L3	DA				
T01	N 2 2.5MM2	H07V-K SW		-T5L1 N -T5L2	N -T5L3	N PE	SCHRAUBE		
T01	n 2 2.5MM2	H07V-K SW		-T5L1 DN PE	SCHRAUBE				
T01	2 2.5MM2	H07V-K SW		-T5L2 DN -T5L1	DA				
T01	2 2.5MM2	H07V-K SW		-T5L3 DN -T5L2	DA				

AS BUILT

5.12.2005

AD

10.06.2005

US STEEL KOSICE/SLOVAKIA

FACT.-REV.

30.10.2005

BL

Drawn/Hänticke

50.3023.01

Approval

30.06.2005

Hoe

Check/Grohmann

SUBSTATION T81

Alteration

Orig.:

ISS. FOR

ISS. BY

CROSS CONNECT. LIST

PANEL

PANEL

05

150.3023.01-A4-741-403

V = L05

+S2

/020

Typ: 01

INCOMING FEEDER

D009781.01.605-3.AHA

Sheet 156

60Sh.

Copyright as per DIN 34 to be observed!

07.12.2008
HJ015ME
020
ADAM

D0978101

1	2	3	4	5	6	7	8			
CROSS CONNECTION										
REFERENCE	POTENTIAL ITEM CR. SECTION	CABLE MATERIAL COLOR	OUTPUT TERMINAL	DESTINATION 1	DESTINATION 2	DESTINATION 3	DESTINATION 4	DESTINATION 5	DESTINATION 6	
D01	0 1.0MM2	H05Y-K SW	-X01	B05 -S1	-00 71					
D01	0 1.0MM2	H05Y-K SW	-X01	B06 -S1	-00 72					
L01	101L+ 0 1.0MM2	H05Y-K SW	-X01	A01 -S22	-00 11					
L01	101L- 0 1.0MM2	H05Y-K SW	-X01	A02 -S23	-00 12					
M01	0 1.0MM2	H05Y-K SW	-F11	-00 C1 -S1	-00 214					
M01	0 1.0MM2	H05Y-K SW	-F2	-00 C1 -S1	-00 222					
M01	0 1.0MM2	H05Y-K SW	-F2	-00 C2 -S43	-00 11					
M01	0 1.0MM2	H05Y-K SW	-S1	-00 221 -S21	-00 14					
M01	0 1.0MM2	H05Y-K SW	-S21	-00 13 -S6	-00 12					
M01	0 1.0MM2	H05Y-K SW	-X01	A03 -S1	-00 213					
M01	102L- 0 1.0MM2	H05Y-K SW	-X01	A04 -F11	-00 C2					
M01	0 1.0MM2	H05Y-K SW	-X01	A05 -S6	-00 11					
M01	0 1.0MM2	H05Y-K SW	-X01	A06 -S43	-00 12					
001	102L+ 0 1.0MM2	H05Y-K SW	-X01	A12 -S1	-00 11 -S1 23					
001	0 1.0MM2	H05Y-K SW	-X01	A13 -S1	-00 12					
001	0 1.0MM2	H05Y-K SW	-X01	A14 -S1	-00 24					
001	102L+ 0 1.0MM2	H05Y-K SW	-X01	C15 -S1	-001 11 -S1 13					
001	0 1.0MM2	H05Y-K SW	-X01	C16 -S1	-001 12					
001	0 1.0MM2	H05Y-K SW	-X01	D01 -S1	-001 14					
002	0 1.0MM2	H05Y-K SW	-X01	A15 -S1	-00 31 -S1 43					
07.12.2006 HJ0115ME LO5+S3 ADAM				GROSS CONNECT. LIST SWITCHING TRUCK PANEL 05				50.3023.01-A4-741-403 V =LO5 +S3		
03	AS BUILT	15.12.2006 AD	Date	106.06.2005	JUS STEEL KOSICE/SLOVAKIA				/ 030 Sheet 57 60Sh.	
02	FACT.-REV.	30.10.2005 BL	Drawn	Hänicke	50.3023.01					
01	Approval	30.06.2005 Hra	Checked	Grohmann	SUBSTATION T81					
NO.	Alteration	Date	Name	Std.	Iss. for	Iss. by:	D009781.01.605-3.AHA			
1							Typ: 01 INCOMING FEEDER			

Copyright as per DIN 34 to be observed!

D00978101

CROSS CONNECTION

REFERENCE	POTENTIAL ITEM CR. SECTION	CABLE MATERIAL COLOR	OUTPUT TERMINAL	DESTINATION 1	DESTINATION 2	DESTINATION 3	DESTINATION 4	DESTINATION 5	DESTINATION 6
002	0 1.0MW2	H05V-K SW	-X01	A16 -S1	-00 32				
002	0 1.0MW2	H05V-K SW	-X01	B01 -S1	-00 44				
002	0 1.0MW2	H05V-K SW	-X01	D02 -S1	-001 21 -S1	-001 23			
002	0 1.0MW2	H05V-K SW	-X01	D03 -S1	-001 22				
002	0 1.0MW2	H05V-K SW	-X01	D04 -S1	-001 24				
005	0 1.0MW2	H05V-K SW	-X01	B02 -S1	-00 51 -S1	-00 63			
005	0 1.0MW2	H05V-K SW	-X01	B03 -S1	-00 52				
005	0 1.0MW2	H05V-K SW	-X01	B04 -S1	-00 64				
005	0 1.0MW2	H05V-K SW	-X01	B13 -S1/2	-00 11				
005	0 1.0MW2	H05V-K SW	-X01	B14 -S1/2	-00 14				
005	0 1.0MW2	H05V-K SW	-X01	B15 -S25	-00 11				
005	0 1.0MW2	H05V-K SW	-X01	B16 -S25	-00 14				
005	0 1.0MW2	H05V-K SW	-X01	C05 -S1	-001 31				
005	0 1.0MW2	H05V-K SW	-X01	C06 -S1	-001 32				
005	0 1.0MW2	H05V-K SW	-X01	D07 -S1	-001 33				
005	0 1.0MW2	H05V-K SW	-X01	D08 -S1	-001 34				
R01	0 1.0MW2	H05V-K SW	-S1	-00 239 -S1/1	-00 12				
R01	0 1.0MW2	H05V-K SW	-X01	A10 -S1/1	-00 11				
R01	0 1.0MW2	H05V-K SW	-X01	A11 -S1	-00 230				
V01	0 1.0MW2	H05V-K SW	-X01	A07 -S24	-00 11				

US STEEL KOSICE/SLOVAKIA

Date 06.06.2005

SUBSTATION T81

Iss. for

Iss. by:

AREVA

CROSS CONNECT - LIST
SWITCHING TRUCK
PANEL

150.3023.01-A4-741403

V = L05

+S3

Typ: 01

INCOMING FEEDER

D009781.01.605-3-AHA

Sheet 58

60Sh.

Copyright as per DIN 34 to be observed!

D00978101

H4015ME
L05+S3
ADAN

07.12.2006

+S3	-X01
CABLE MATERIAL	H05V-K 1.0mm2 SW

03	AS BUILT	5.12.2005	AD	Date	06.06.2005	US STEEL KOSICE/SLOVAKIA		PLUS DIAGRAM CIRCUIT-BREAKER PANEL	50_3023_01-44-741403 V=L05	Type: 01 INCOMING FEEDER	D009781_01_605-3_AHA	Sheet 60 60Sh.
02	FACT. -REV.	30.10.2005	BL	Drawn	Hänticke	50_3023_01						
01	Approval	30.06.2005	Hae	Checked	Grohmann	SUBSTATION T81						
NO.	Alteration	Date	Name	Sid.		Orig:	iss.for	iss.by:	05			