

US STEEL KOSICE/SLOVAKIA
50.3023.01
SUBSTATION T81

INCOMING FEEDER

CIRCUIT DIAGRAM

A = L09

/ A01

D009781.01. 609-3.AHA

50.3023.01-A4-741-103
COVER SHEET

PANEL
09

DATE :	06.06.2005
prep. :	Hänicke
Check:	Grohmann
Norm :	

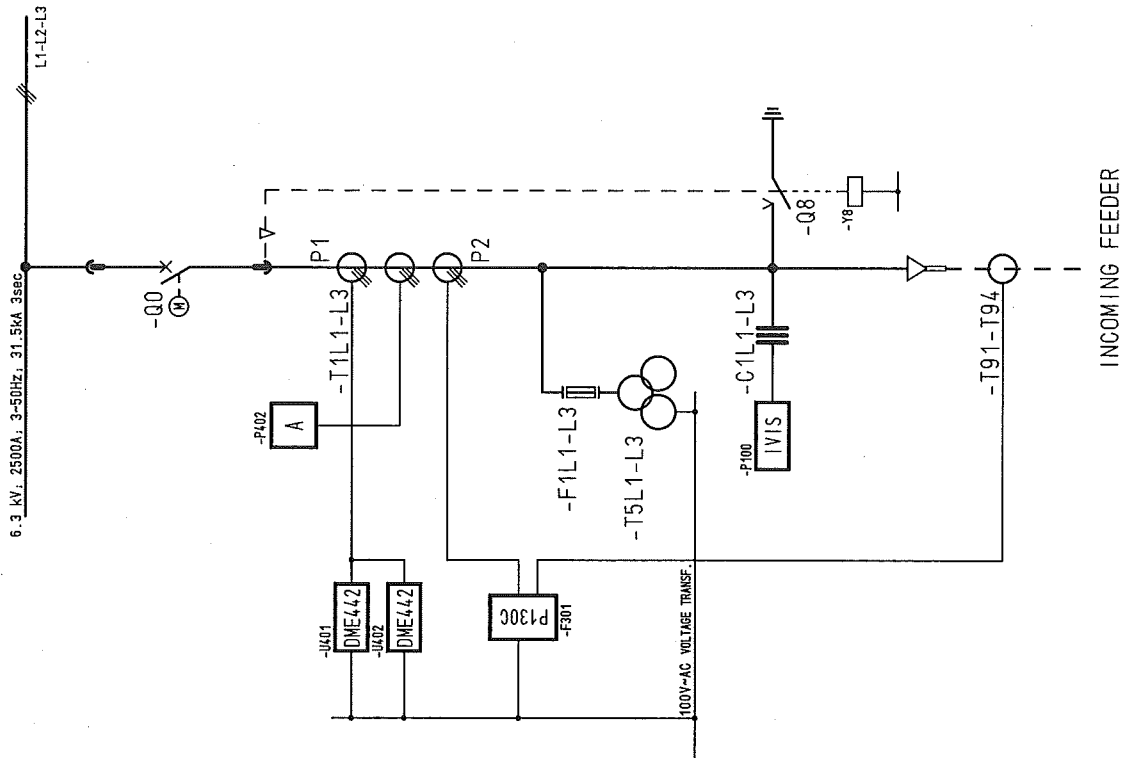
07.12.2006 HJ0115ME
A01
L09
ADAM

03 AS BUILT	5.12.2006	AD
02 FACT.-REV.	30.10.2005	BL
01 Approval	30.06.2005	Hde
Nr. Alteration	Date	Name

INSTRUMENT AND CONTROL				
FUNCTION	LOCAL	LOCAL CONTROL	REMOTE CONTROL	REMARKS
CONTROL	-08 -00		-00	
STATUS SIGNAL	-00, -08		-00, -08	
MEASUREMENT	I (L2)		I (L2), U(L1-L2) P (P2), Q(Q2)	
PROTECTION	MICOM P130C			
ANSI	27, 32, 46, 48, 49, 50P, 50N, 50BF, 51, 51N, 59, 59N, 66, 67, 67N, 79, 810			
METERING	810, 86			

[illegible]

TECHNICAL TRANSFORMER DATA					REMARKS
DESIGN	MANUFACT	TYPE	RATIO	WDE	
-T1L1 -T1L2 -T1L3	ZELLSSKO	GT12H GT12H GT12H	2500/1/1/1A 2500/1/1/1A 2500/1/1/1A	C1: cl. 0.2FS5 15VA C2: cl. 1 15VA C3: cl. 10P10 15VA	
-T5L1 -T5L2 -T5L3	ZELLSSKO	EYEB EYEB EYEB	$\frac{6.3}{\sqrt{3}} / \frac{0.1}{\sqrt{3}} / \frac{0.1}{3} \text{ kV}$	C1. 0.2 30VA W1 C1. 3P 100VA W3	
-F1L1 -F1L2 -F1L3	AEG AEG AEG	2A 2A 2A			HV FUSE
-C1L1 -C1L2 -C1L3	AREVA AREVA AREVA	IVIS IVIS IVIS			CAP. TAPPING
-T91-T91					Cable Core Transf.



03	AS BUILT	5.12.2005	AD	Date	06.06.2005	US STEEL KOSICE/SLOVAKIA	 AREVA	CIRCUIT DIAGRAM		50.3023.01-AA-741403		A =L09			
02	FACT. -REV.	30.10.2005	BL	Drawn	Hönlücke	50.3023.01									
01	Approval	30.06.2005	Hoe	Checked	Grohmann	SUBSTATION T81									
ING.	Alteration	Date	Name	Std.		Orig.:	iss.for		iss.by:	09	PANEL	Type: 01	D009781.01.609-3_AHA	Sheet2	60Sh:
INCOMING FEEDER															

1		2		3		4		5		6		7		8	
CLIENT DOCUMENT NUMBER		RELEASE BY DOCUMENT NUMBER		VERSION STATUS		DOCUMENT IDENTIFICATION SORT MATCHING		ITEM NO.		SHEET		DESIGN			
A	50.3023.01-A4-741-103	D009781.01.609-3.AHA		01	02	03	A =L09	A01	1	COVER SHEET		09			
	50.3023.01-A4-741-103	D009781.01.609-3.AHA		01	02	03	A =L09	A02	2	CIRCUIT DIAGRAM		09			
	50.3023.01-A4-741-103	D009781.01.609-3.AHA		01	02	03	A =L09	B01	3	Inhaltsverzeichnis		09			
	50.3023.01-A4-741-103	D009781.01.609-3.AHA		01	02	03	A =L09	B02	4	Inhaltsverzeichnis		09			
B	50.3023.01-A4-741-103	D009781.01.609-3.AHA		01	02	03	S =L09	D01	5	CIRCUIT DIAGRAM		AC-DISTRIBUTION			
	50.3023.01-A4-741-103	D009781.01.609-3.AHA		01	02	03	S =L09	G01	6	CIRCUIT DIAGRAM		DC DISTR.			
	50.3023.01-A4-741-103	D009781.01.609-3.AHA		01	02	03	S =L09	L01	7	CIRCUIT DIAGRAM		CIRCUIT-BREAKER			
	50.3023.01-A4-741-103	D009781.01.609-3.AHA		01	02	03	S =L09	M01	8	CIRCUIT DIAGRAM		CONTROL			
C	50.3023.01-A4-741-103	D009781.01.609-3.AHA		01	02	03	S =L09	N01	9	CIRCUIT DIAGRAM		INTERLOCK			
	50.3023.01-A4-741-103	D009781.01.609-3.AHA		01	02	03	S =L09	Q01	10	CIRCUIT DIAGRAM		POSITION INDICA.			
	50.3023.01-A4-741-103	D009781.01.609-3.AHA		01	02	03	S =L09	Q02	11	CIRCUIT DIAGRAM		INTERFACE			
	50.3023.01-A4-741-103	D009781.01.609-3.AHA		01	02	03	S =L09	Q03	12	CIRCUIT DIAGRAM		INTERFACE			
D	50.3023.01-A4-741-103	D009781.01.609-3.AHA		01	02	03	S =L09	Q04	13	CIRCUIT DIAGRAM		INTERFACE			
	50.3023.01-A4-741-103	D009781.01.609-3.AHA		01	02	03	S =L09	Q05	14	CIRCUIT DIAGRAM		SPARE CONTACTS			
	50.3023.01-A4-741-103	D009781.01.609-3.AHA		01	02	03	S =L09	R01	15	CIRCUIT DIAGRAM		SIGNALLING			
	50.3023.01-A4-741-103	D009781.01.609-3.AHA		01	02	03	S =L09	S01	16	CIRCUIT DIAGRAM		CURR. TRANSF.			
E	50.3023.01-A4-741-103	D009781.01.609-3.AHA		01	02	03	S =L09	S02	17	CIRCUIT DIAGRAM		CURR. TRANSF.			
	50.3023.01-A4-741-103	D009781.01.609-3.AHA		01	02	03	S =L09	T01	18	CIRCUIT DIAGRAM		VOLTAGE TRANSF.			
	50.3023.01-A4-741-103	D009781.01.609-3.AHA		01	02	03	S =L09	T02	19	CIRCUIT DIAGRAM		I/VIS			
	50.3023.01-A4-741-103	D009781.01.609-3.AHA		01	02	03	S =L09	V01	20	CIRCUIT DIAGRAM		SPARE CONTACTS			
F	50.3023.01-A4-741-103	D009781.01.609-3.AHA		01	02	03	S =L09	Z1F1	21	LIST OF EQUIPMENT		09			
	50.3023.01-A4-741-103	D009781.01.609-3.AHA		01	02	03	S =L09	Z1F2	22	LIST OF EQUIPMENT		09			
	50.3023.01-A4-741-103	D009781.01.609-3.AHA		01	02	03	S =L09	Z1F20	23	LIST OF EQUIPMENT		09			
	50.3023.01-A4-741-103	D009781.01.609-3.AHA		01	02	03	S =L09	Z1F21	24	LIST OF EQUIPMENT		09			
	50.3023.01-A4-741-103	D009781.01.609-3.AHA		01	02	03	S =L09	Z1H1	25	LIST OF EQUIPMENT		09			
	50.3023.01-A4-741-103	D009781.01.609-3.AHA		01	02	03	S =L09	Z1K1	26	LIST OF EQUIPMENT		09			
	50.3023.01-A4-741-103	D009781.01.609-3.AHA		01	02	03	S =L09	Z1P1	27	LIST OF EQUIPMENT		09			
	50.3023.01-A4-741-103	D009781.01.609-3.AHA		01	02	03	S =L09	Z1R1	28	LIST OF EQUIPMENT		09			
	50.3023.01-A4-741-103	D009781.01.609-3.AHA		01	02	03	S =L09	Z1S1	29	LIST OF EQUIPMENT		09			
	50.3023.01-A4-741-103	D009781.01.609-3.AHA		01	02	03	S =L09	Z1U1	30	LIST OF EQUIPMENT		09			
	50.3023.01-A4-741-103	D009781.01.609-3.AHA		01	02	03	S =L09	Z2C1	31	LIST OF EQUIPMENT		09			
	50.3023.01-A4-741-103	D009781.01.609-3.AHA		01	02	03	S =L09								
AS BUILT		Date 05.06.2005		US STEEL KOSICE/SLOVAKIA		Inhaltsverzeichnis		50.3023.01-A4-741-103		A =L09					
FACT. - REV.		30.10.2005 BL Drawn Hentcke		50.3023.01		PANEL									
Approval		30.05.2005 Hec Check Grohmann		SUBSTATION T81		PANEL									
Alteration		Date Name/Sid.		Iss. for		Iss. by:									
NO.															

Copyright as per DIN 34 to be observed!

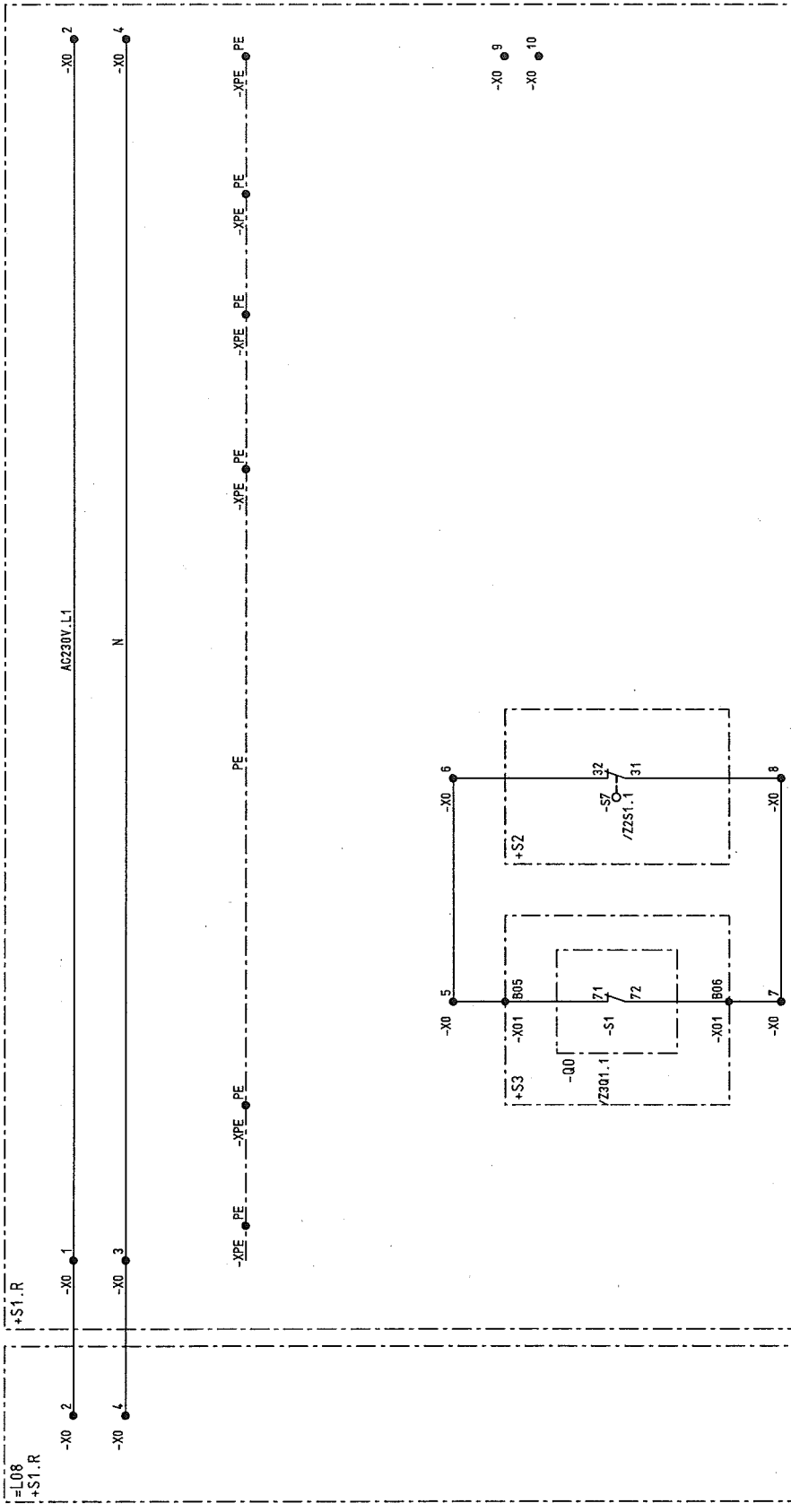
03	AS BUILT	5.12.2005	AD	Date	06.06.2005	US STEEL KOSICE/SLOVAKIA	 AREVA	Inhaltsverzeichnis	50_3023.01-A4-741403	A = 09	/ B02
02	FACT. -REV.	30.10.2005	BL	Drawn	Häthcke	50_3023.01					
01	Approval	30.06.2005	Hae	Check	Grohmann	SUBSTATION T81					
NO.	Approval	Date	Name/Sid.	Orig.	iss. for	iss. by:		PANEL	Typ: 01	D009781.01.609-3.AHA	Sheet 4
								09	INCOMING FEEDER		60SH.

1 2 3 4 5 6 7 8

AC-DISTRIBUTION

CIRCUIT BREAKER WITHDRAWN
OR NOT IN SERVICE

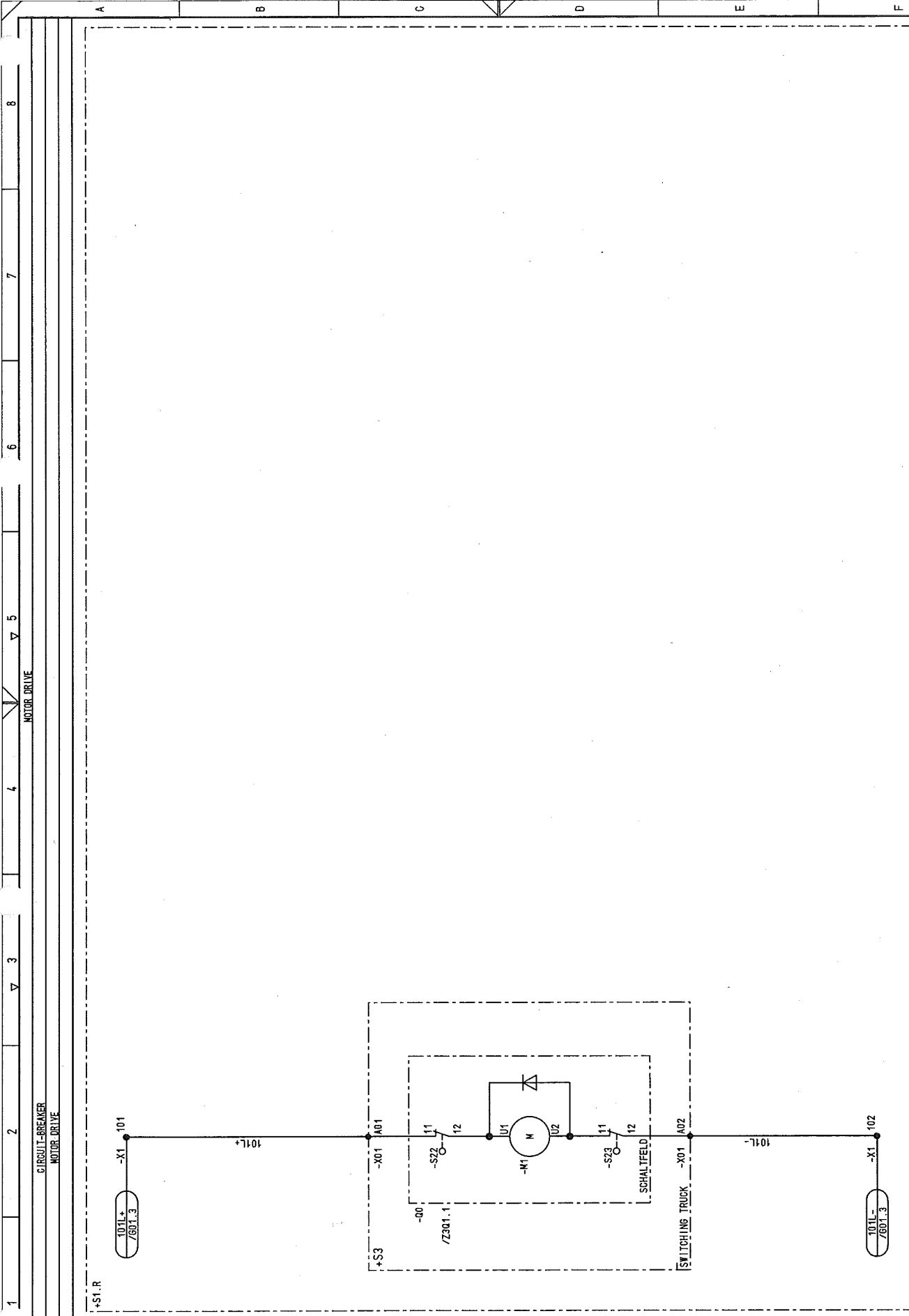
C.B. OPEN



03	AS BUILT	5.12.2005	AD	Date	05.06.2005	US STEEL KOSICE/SLOVAKIA	CIRCUIT DIAGRAM	50.3023.01-A4-7/1403	S=L09
02	FACT.-REV.	30.10.2005	BL	Drawn	Hänticke	50.3023.01	AC-DISTRIBUTION		/ D01
01	Approval	30.06.2005	Hoe	Check	Grohmann	SUBSTATION T81	PANEL	Typ: 01	Sheet5
NO.	Alteration	Date	Name	Sid.	Iss.for	Iss.by:		INCOMING FEEDER	60Sh.
								D009781.01.609-3.AHA	

Copyright as per DIN 34 to be observed

07.12.2006
HJ0115ME
L09
D01
ADAM



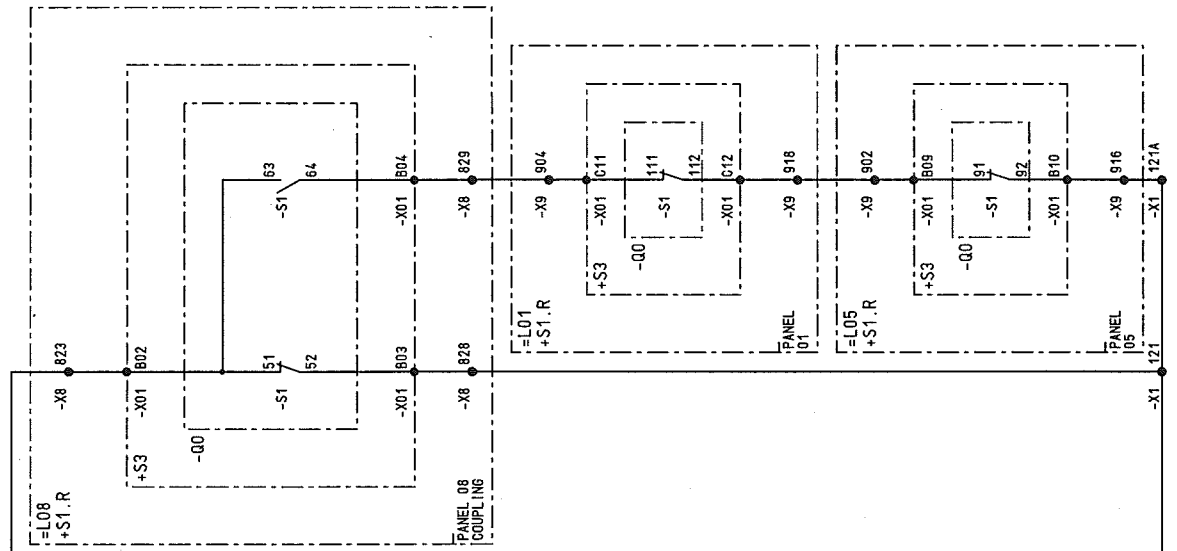
Copyright as per DIN 34 to be observed!

ADAM
L09
H0115ME

03	AS BUILT	5.12.2005	AD	Date	06.06.2005	US STEEL KOSICE/SLOVAKIA	CIRCUIT DIAGRAM	50.3023.01-A4-741403	S1=L09	8
02	FACT.-REV.	30.10.2005	BL	Drawn	Henticke	50.3023.01	CIRCUIT-BREAKER			7
01	Approval	30.05.2005	Hae	Check	Grohmann	SUBSTATION T81	PANEL			6
NO.	Alteration	Date	Name	Sld.	Iss.for	Iss.by:	09	D009781.01.609-3.AHA	Sheet 7	8
								INCOMING FEEDER	60Sh.	

1 2 3 4 5 6 7 8

INTERLOCK
/NO1.7



INTERLOCK
/NO1.7

50.3023.01-A4-7/1-403		S1=L09		/ NO1	
Typ: 01		INCOMING FEEDER		D009781.01.609-3.AHA	
Sheet 9		60Sh		8	

AS BUILT	5.2.2005	AD	Date	06.06.2005	US STEEL KOSICE/SLOVAKIA
FACT. - REV.	30.10.2005	BL	Drawn	Honticke	50.3023.01
Approval	30.06.2005	Hoe	Check	Grohmann	SUBSTATION T81
Alteration					
NO.					

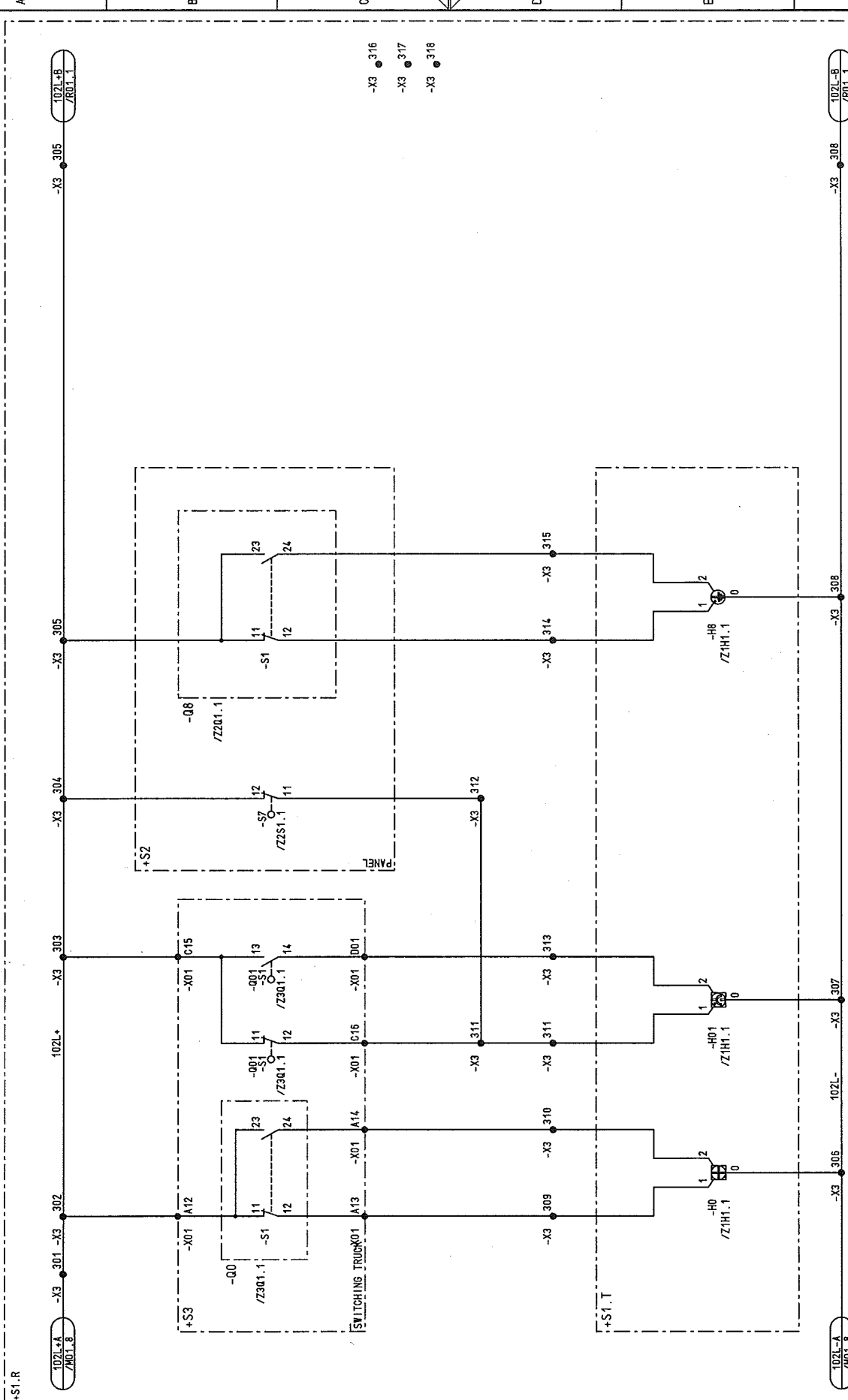
Iss. for	Iss. by:	Iss. by:

D00978101 Copyright as per DIN 34 to be observed!

H0115ME
L09
NO1
ADAM

03	AS BUILT	5.2.2005	AD	Date	05.06.2005	US STEEL KOSICE/SLOVAKIA	50.3023.01	50.3023.01-A4-741403	S1-L09	7/001
02	FACT. -REV.	30.10.2005	BL	Drawn	HdnTake	50.3023.01				
01	Approval	30.05.2005	Be	Check	Grahmann	SUBSTATION T81				
NO.	Alteration	Date	Name	Sld.	Orig.	Iss. for	Iss. by:	INCOMING FEEDER	D009781.01.609-3. AHA	Sheet 10 60Sh.

RELAY BOX



CIRCUIT DIAGRAM
POSITION INDICA.
PANEL



iss. by:

iss. for

Orig.

Date

Name

Sld.

Alteration

NO.

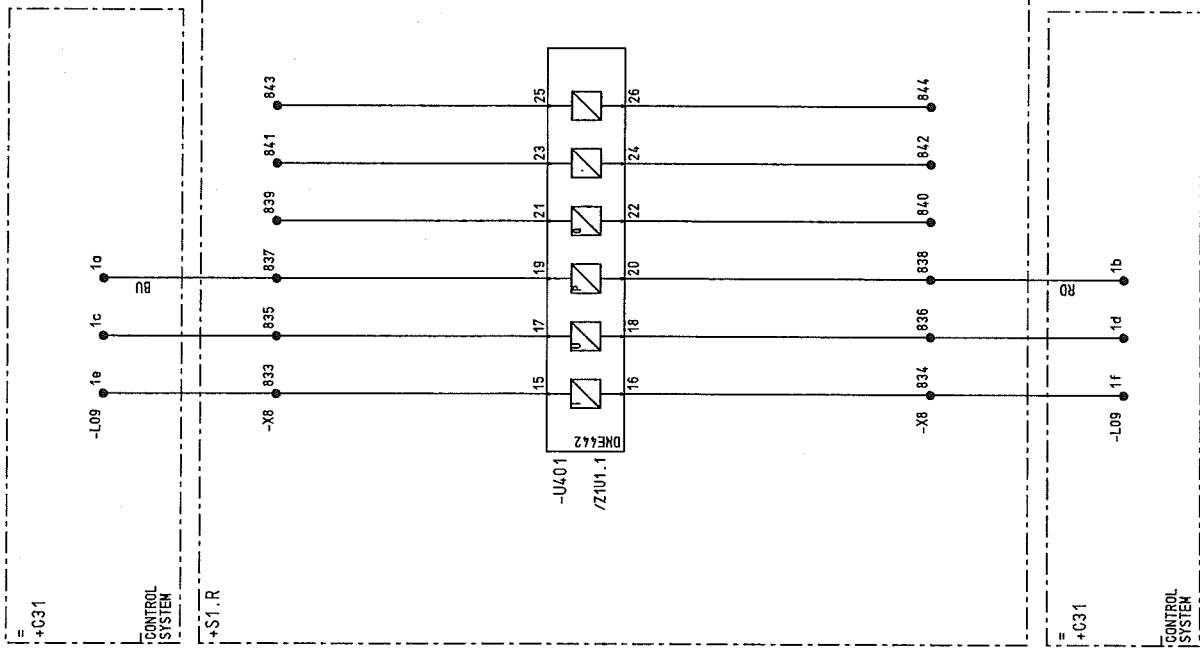




003	AS BUILT	5.12.2005	AD	Date	05.06.2005	US STEEL KOSICE/SLOVAKIA	 AREVA	CIRCUIT DIAGRAM INTERFACE PANEL	50_3023_01-AA-741-403	S = L09	/ 003
002	FACT - REV.	30.10.2005	BL	Drawn	Hnčlik	50_3023_01					
001	Approval	30.06.2005	Has	Check	Grohmann	SUBSTATION T81					
NK0.	Alteration	Date	Name	Sid.	Orig.	Iss for	Iss by:	09	Type: 01 INCOMING FEEDER	D009784_01_609-3_AHA	Sheet 12 60Sh.

D0978101 Copyright as per DIN 34 to be observed!

07.12.2008
HJ0115ME
L09
ADAM



NO.	Alteration	Date	Name/Std.	Iss. for	Iss. by:
01	Approval	30.06.2005	Hae	Check Grohmann	
02	FACT.-REV.	30.10.2005	BL	Drawn Hnltke	
03	AS BUILT	6.12.2008	AD	Date 06.06.2005	ISS STEEL KOSICE/SLOVAKIA

CIRCUIT DIAGRAM		50.3023.01-A4-7+1-403		S		L09	
INTERFACE		50.3023.01					
PANEL		SUBSTATION T81					
		Orig:					

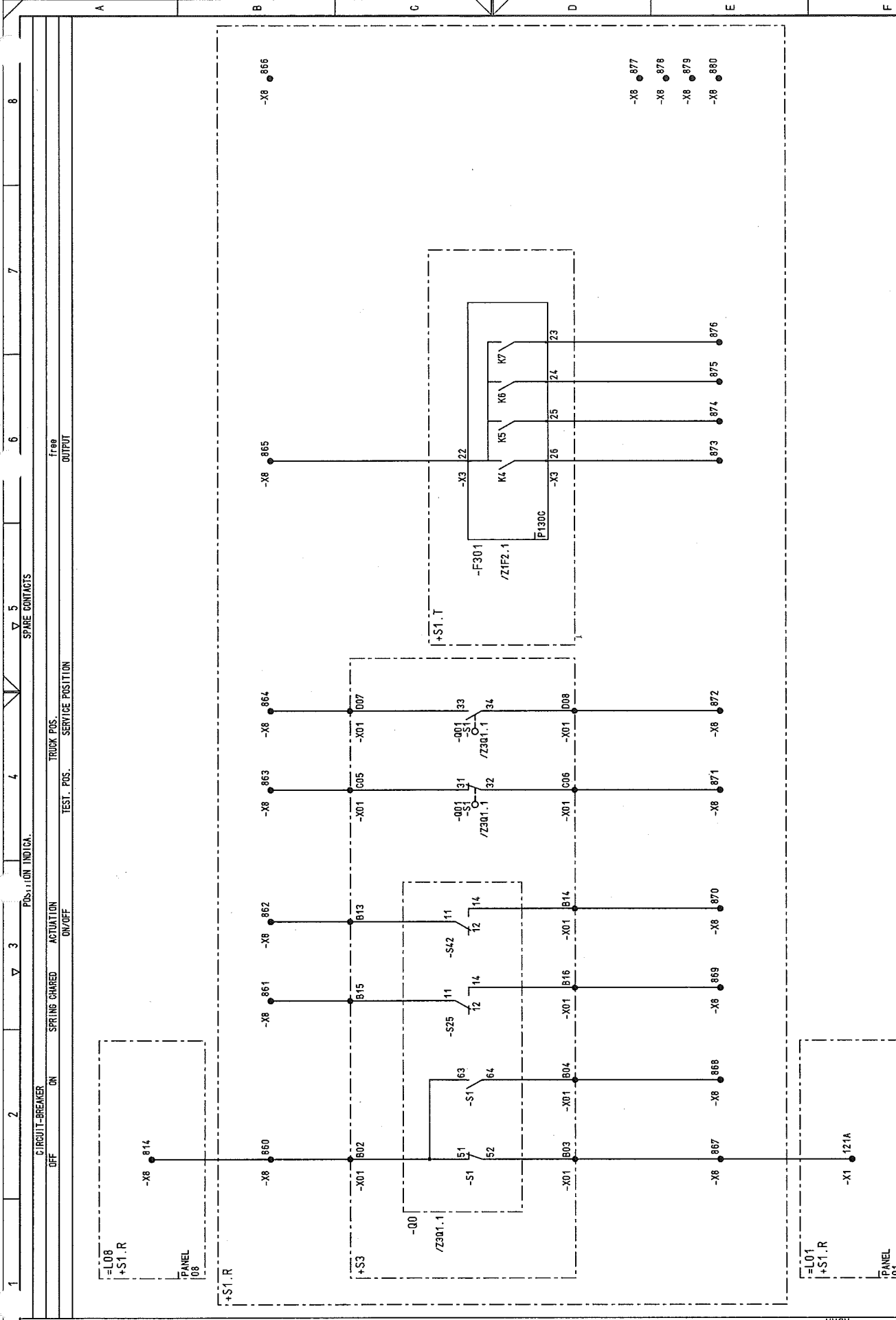
Typ: 01		D009781.01.609-3.AHA		Sheet 13		60Sh	
INCOMING FEEDER							



50.3023.01-A4-7+1-403

50.3023.01-A4-7+1-403

50.3023.01-A4-7+1-403

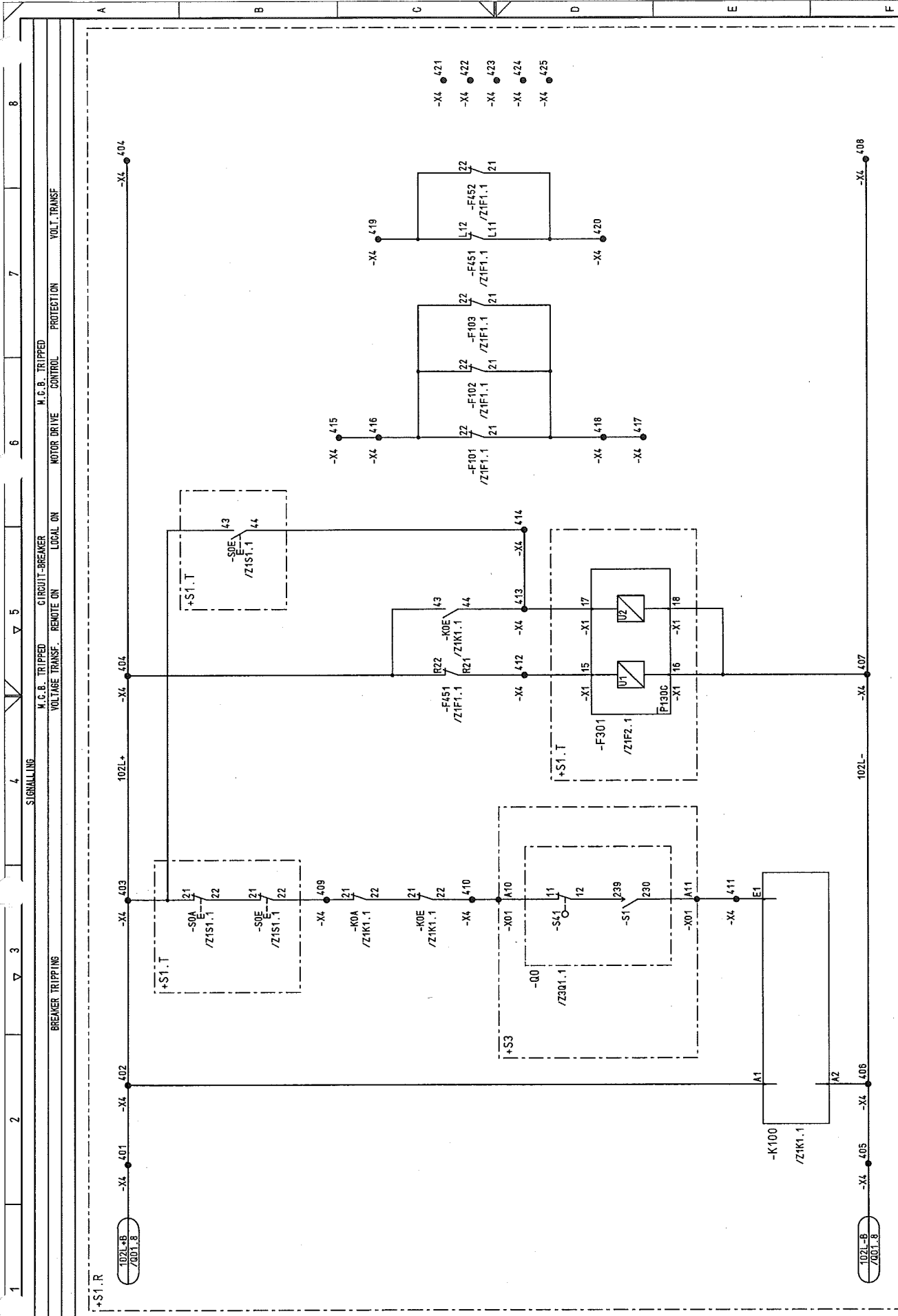


03	AS BUILT	5.12.2005	AD	Date	06.06.2005	US STEEL KOSICE/SLOVAKIA	CIRCUIT DIAGRAM	50.3023.01-A4-741403	S1=L09	/ 005
02	FACT. - REV.	30.10.2005	BL	Drawn	Hönlcke	50.3023.01	SPARE CONTACTS			
01	Approval	30.06.2005	Hoe	Check	Grohmann	SUBSTATION T81	PANEL			
NO.	Alteration	Date	Name	Std.	Iss. for	Iss. by:	Panel	INCOMING FEEDER	D009781.01.609-3.AHA	Sheet 14 / 605h

Copyright as per DIN 34 to be observed!

07.12.2006
H0115ME
L09
ADAM

00978101



NO.	Alteration	Date	Name	Std.	2	3	4	5	6	7	8
01	Approval	30.05.2005	He	Check	Grohmann						
02	FACT. -REV.	30.10.2005	BL	Drawn	HgHncke						
03	AS BUILT	5.12.2005	AD	Date	05.06.2005						
US STEEL KOSTICE/SLOVAKIA											
50.3023.01											
SUBSTATION T81											
Orig:											
iss.by:											
iss.for:											
CIRCUIT DIAGRAM											
SIGNALLING											
PANEL											
INCOMING FEEDER											
D009781.01.609-3.AHA											
Typ: 01											
Sheet 15											
/ R01											
50.3023.01-A4-741403											
S L09											

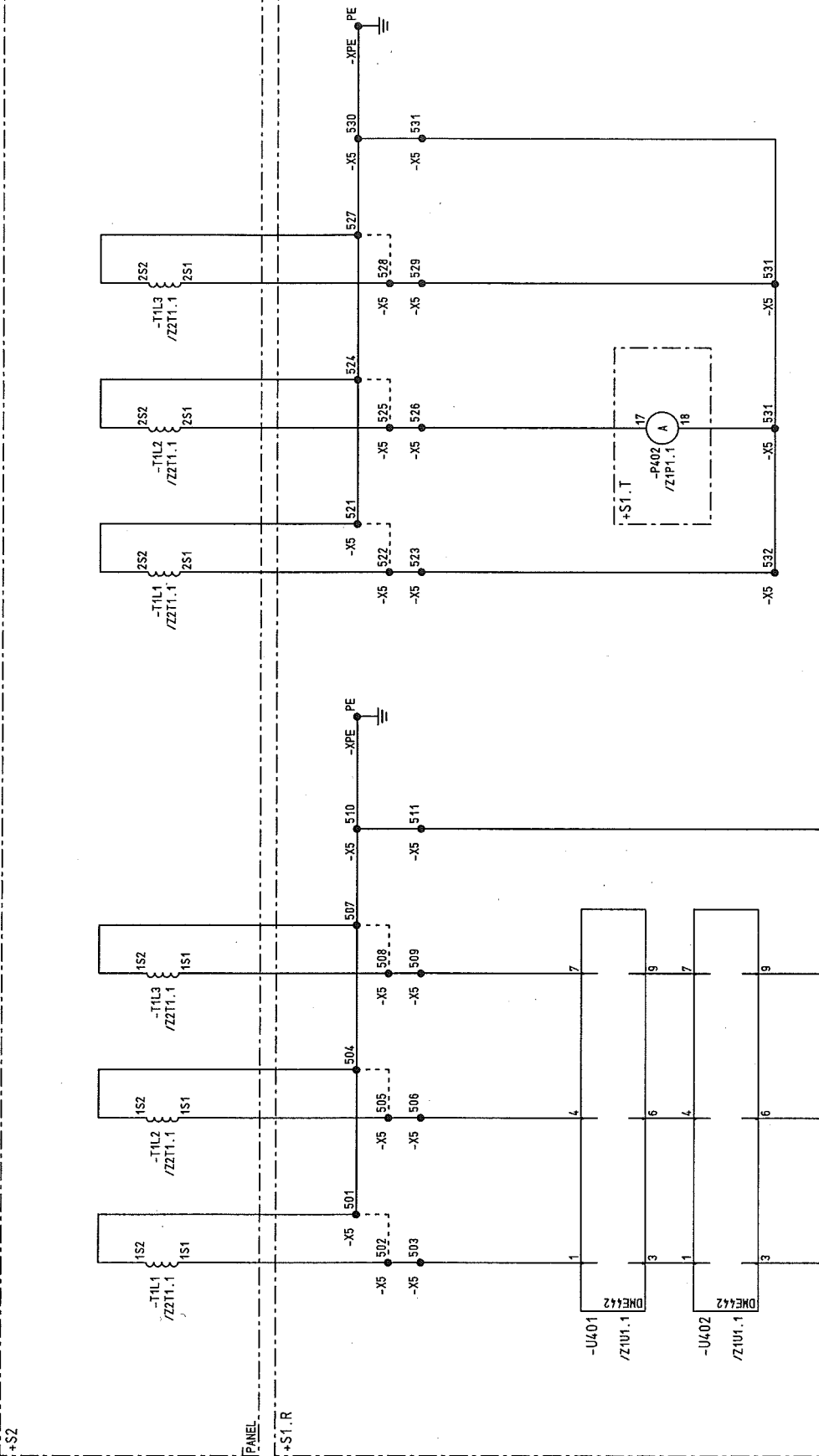
D0978101 Copyright as per DIN 34 to be observed

H0115ME
R01
L09
ADAM

D0978101 Copyright as per DIN 34 to be observed!

07.12.2008
HJ0115HE
S01
L09
ADAM

03	AS BUILT	5.12.2005	AD	Date	06.06.2005	US STEEL KOSICE/SLOVAKIA	CIRCUIT DIAGRAM	50.3023.01-A4-741403	S	L09	/ S01
02	FACT.-REV.	30.10.2005	BL	Drawn	Hönlake	50.3023.01	CURR. TRANSF.				
01	Approval	30.06.2005	Rae	Check	Grohmann	SUBSTATION T81	PANEL				Sheet 16
NO.	Alteration	Date	Name	Std.	Iss.	for	Iss.	by:			60Sh.



1

2

3

4

5

6

7

8

1

2

3

4

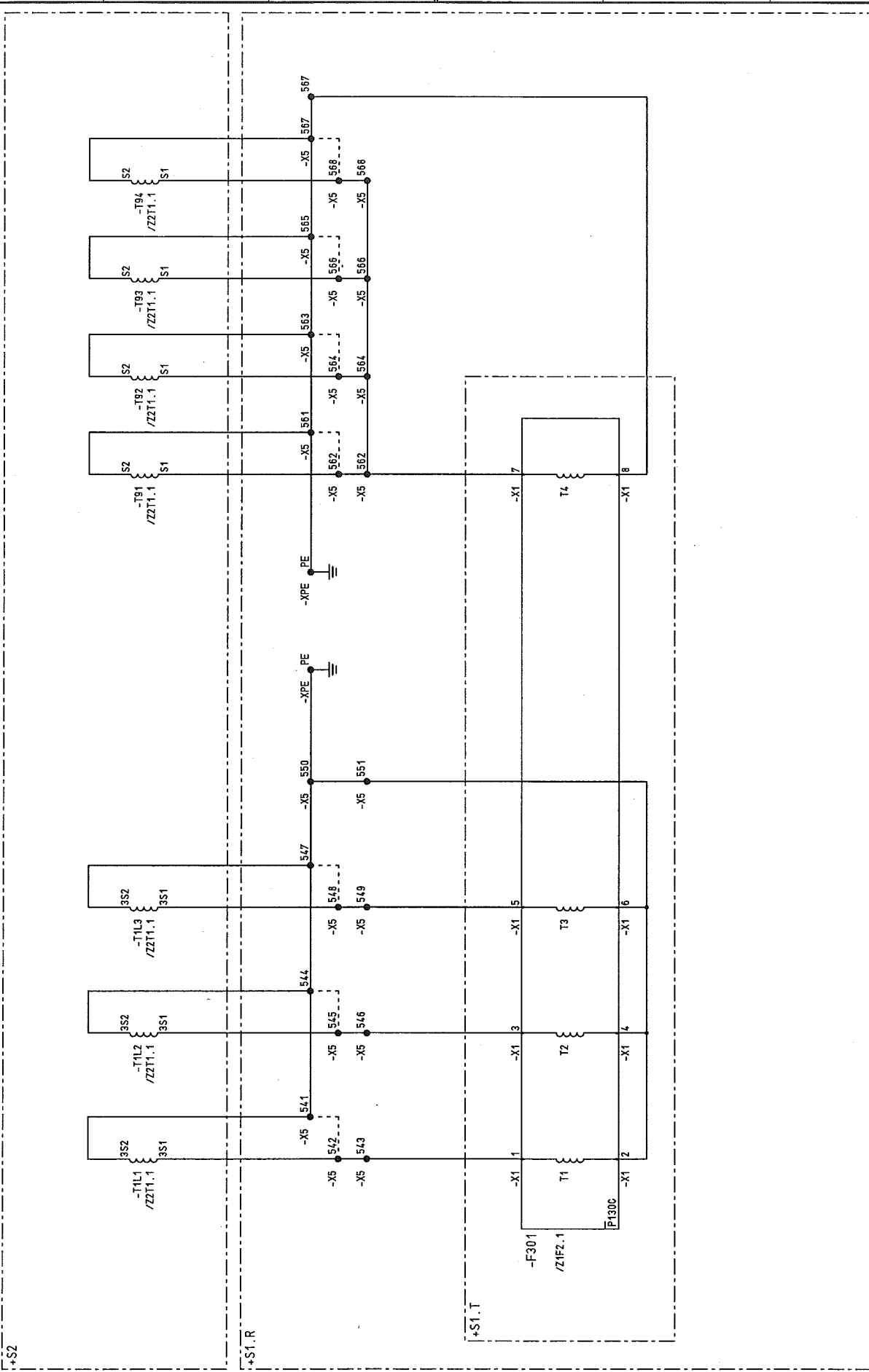
5

6

7

8

03	AS BUILT	5.12.2005	AD	Date	05.06.2005	US STEEL KOSICE/SLOVAKIA	CIRCUIT DIAGRAM	50.3023.01-A4-741403	S1_L09	7/502
02	FACT. -REV.	30.10.2005	BL	Drawn	Hdnicke	50.3023.01	CURR. TRANSF.			
01	Approval	30.06.2005	Hoe	Check	Grahmann	SUBSTATION T81	PANEL			Sheet 17
NO.	Alteration	Date	Name	Std.	Iss.	for	Iss.	by:	Typ: 01	60Sh.
									INCOMING FEEDER	
									D009781.01.609-3.AHA	



PROTECTION

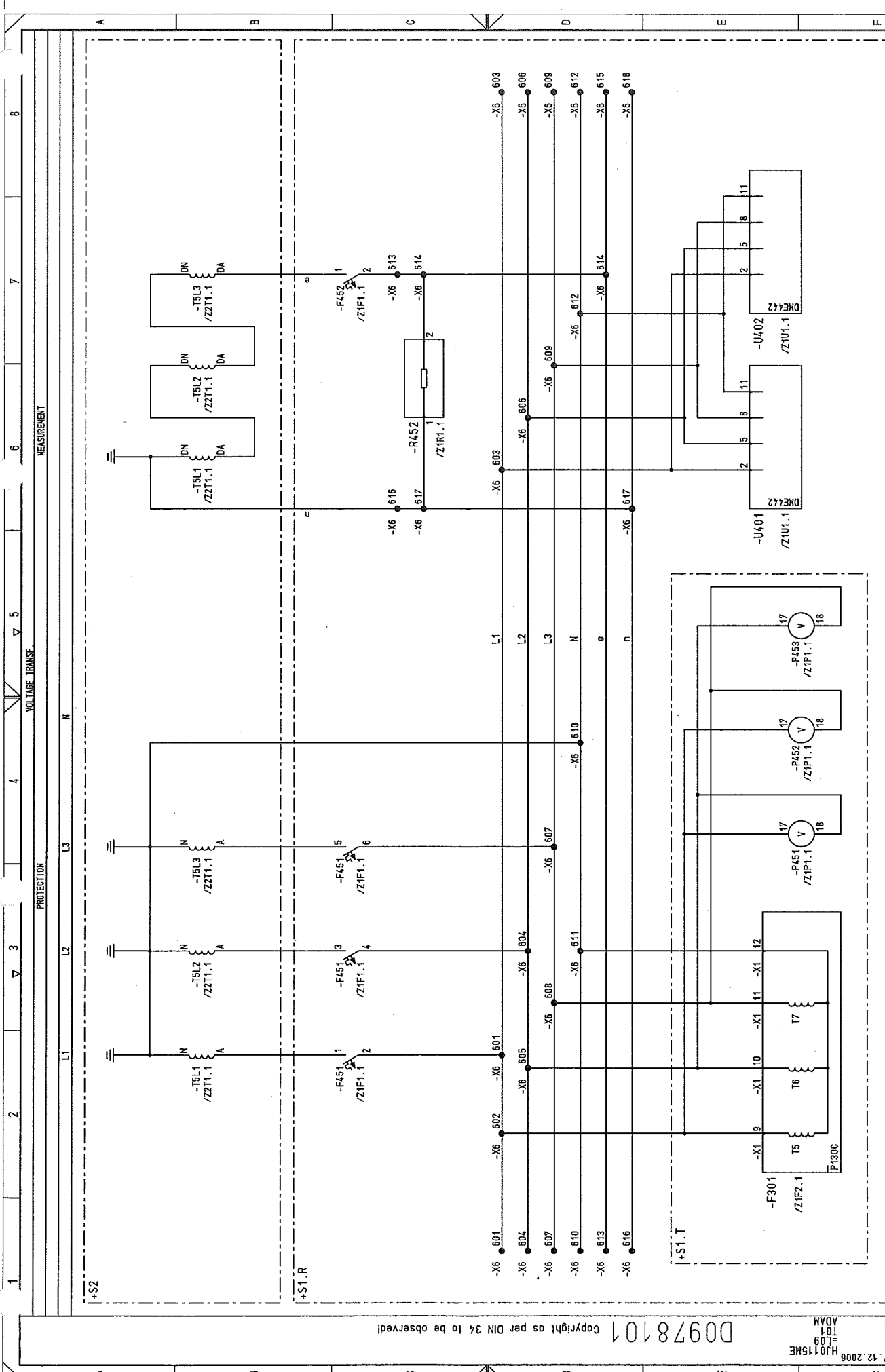
EARTH FAULT

CURRENT

PROTECTION

EARTH FAULT

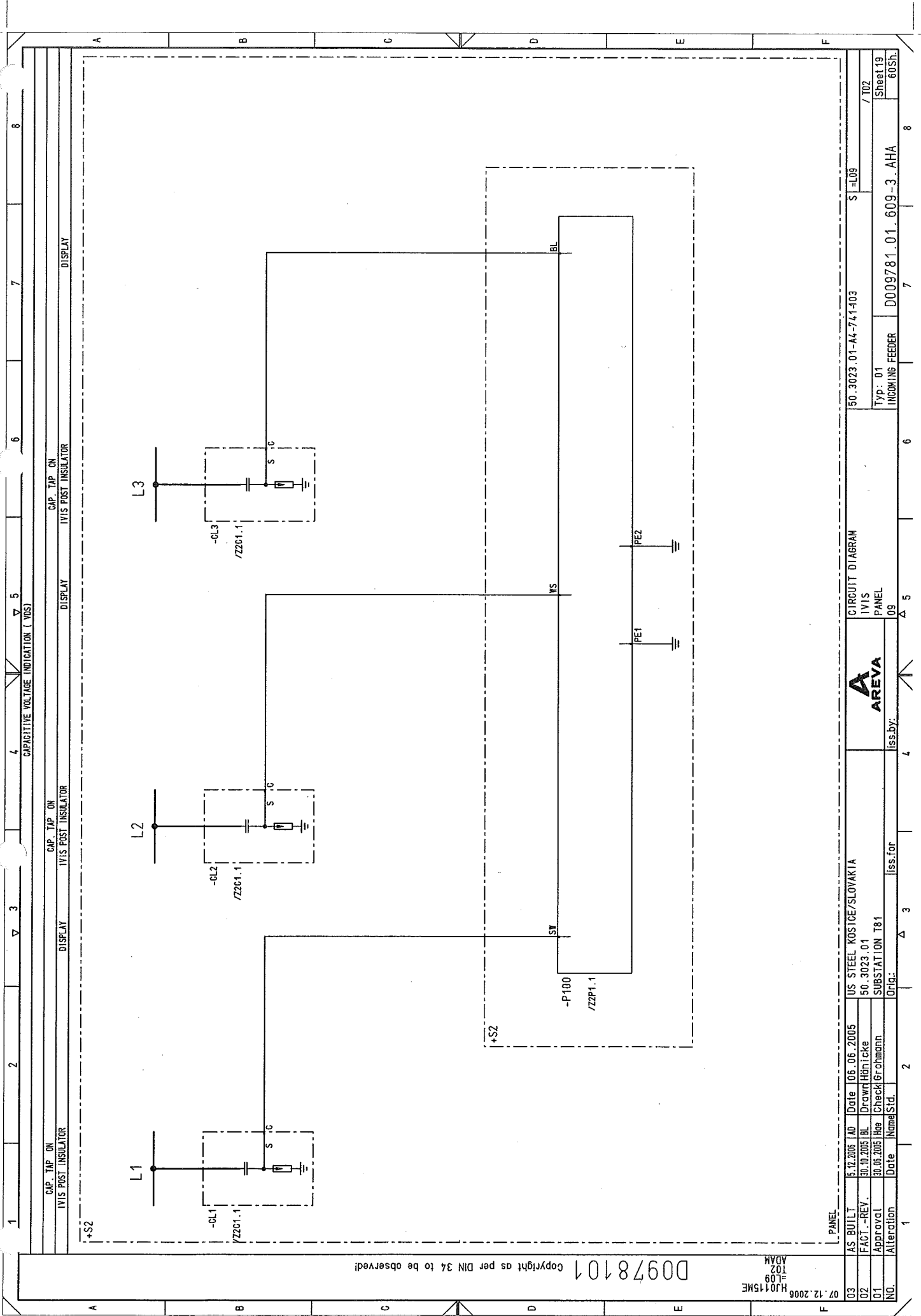
CURRENT



03	AS BUILT	5.12.2005	AD	Date	06.06.2005	US STEEL KOSICE/SLOVAKIA	CIRCUIT DIAGRAM	50.3023.01-A4-7/1-403	S1=L09	8
02	FACT - REV.	30.10.2005	BL	Drawn	HnTicke	50.3023.01	VOLTAGE TRANSF.			7
01	Approval	30.06.2005	He	Check	Grohmann	SUBSTATION T81	PANEL	Typ: 01		6
NO.	Alteration	Date	Name	Sid.	Iss. for	Iss. by:		INCOMING FEEDER	D009781.01.609-3.AHA	8
										60Sh.

D00978101 Copyright as per DIN 34 to be observed

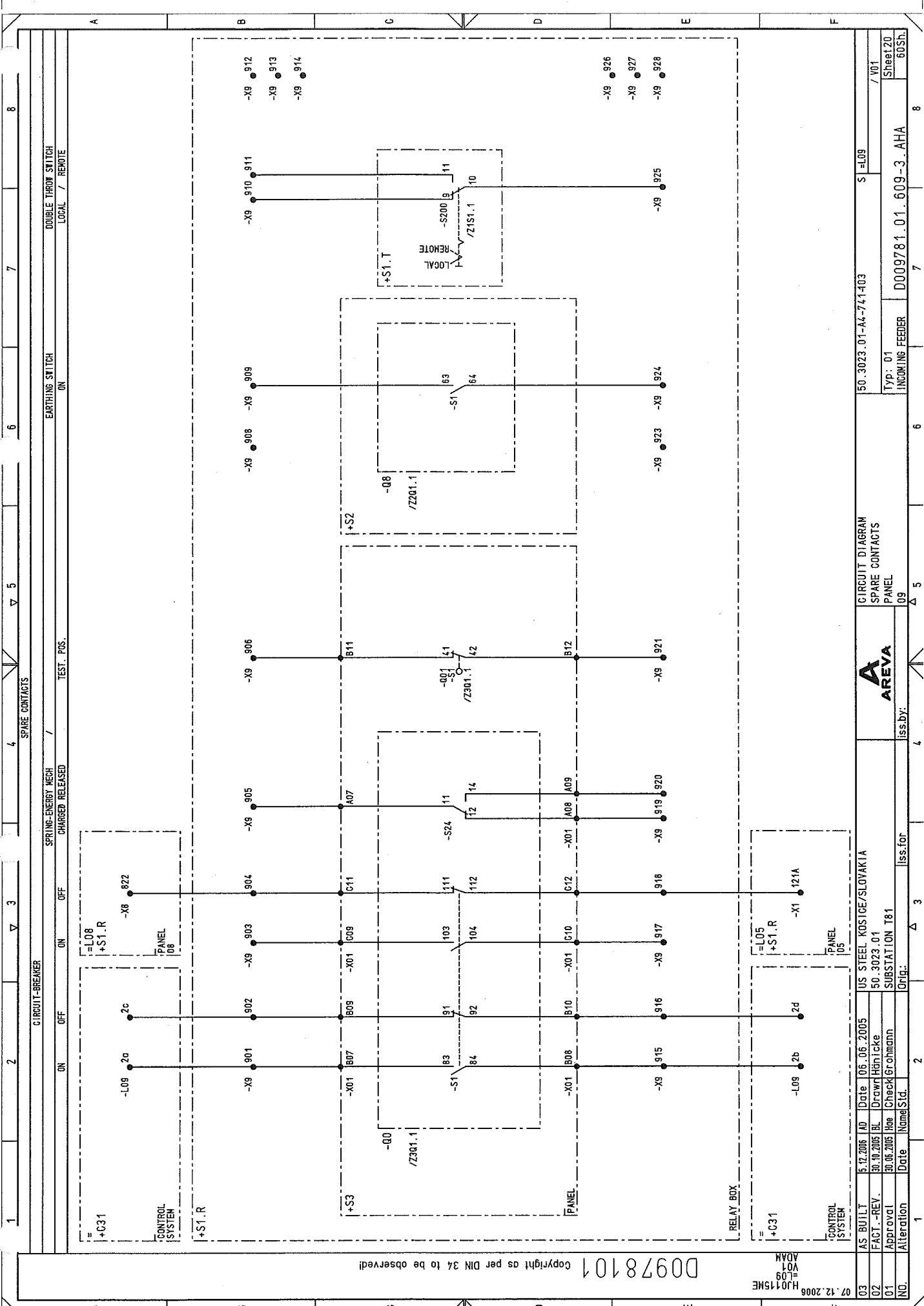
07.12.2006
H0115ME
L09
T01
ADAM



D0978101 Copyright as per DIN 34 to be observed!

07.12.2006
HJ015ME
T02
ADM

PANEL		CIRCUIT DIAGRAM		50.3023.01-A4-741403		S=L09		/ T02	
03	AS BUILT	5.12.2005	AD	Date	06.06.2005	US STEEL KOSICE/SLOVAKIA		50.3023.01	
02	FACT - REV.	30.10.2005	BL	Drawn	Hänicke	SUBSTATION T81		Orig.	
01	Approval	30.06.2005	Hae	Check	Grohmann	iss.for		D009781.01.609-3-AHA	
NO.	Alteration	Date	Name	Std.		Typ: 01		Sheet 19	
						INCOMING FEEDER		60Sh	



Copyright as per DIN 34 to be observed

07.12.2008
H0115ME
ADAM

NO.	Alteration	Date	Name	Std.	Iss. for	Iss. by:	Panel	50.3023.01-A4-711403	S1=L09	Sheet 20	60Sh.
03	AS BUILT	5.12.2005	AD	Date	05.06.2005	US STEEL KOSICE/SLOVAKIA					
02	FACT. - REV.	30.10.2005	BL	Drawn	Hnltcke	50.3023.01					
01	Approval	30.06.2005	Bae	Check	Grohmann	SUBSTATION T81					

Typ: 01	INCOMING FEEDER	D009781.01.609-3.AHA	8
---------	-----------------	----------------------	---

03	AS BUILT	5.12.2005	AD	Date	05.06.2005	US STEEL KOSICE/SLOVAKIA		LIST OF EQUIPMENT		50.3023.01-A4-741403	\$=L09	/ ZIF1	
02	FACT.-REV.	30.10.2005	BL	Drawn	Hänticke	50.3023.01			PANEL	Typ: 01			Sheet 21
01	Approval	30.06.2005	He	Checked	Grohmann	SUBSTATION T81			09	INCOMING FEEDER			60Sh.
NO.	Alteration	Date	Name	Std.	Orig.	iss.for	iss.by:						

1	2	3	4	5	6	7	8
DESCRIPTION, DESIGN, TECHNICAL DATA	MANUFACTURER, TYPE, ORDERING DATA	SETTINGS	APPARATUS SYMBOL DIAGRAM	REFERENCE TO INDIVIDUAL TREATMENT	(CIRCUIT DIAGRAM, SHEET NO., CIRCUIT NO.)	WITH REFERENCES TO DETAILS	REMARK
1	MONIT.- PROTECTION	Manuf. AREVA Ord. No. : MTCOM P130-98903020-401-301	Type: P130C				
	MOTOR PROTECTION	IN=AC 1/5 UN=AC 50-130	FN=50/60HZ				
	AUXILIARY VOLTAGE	: DC24-60V/DC110-250V/	: AC100-230V				
	Technical components per device	Type	Ordering number				
	Application	Settings	Location	Item designation			
	/001.5	/001.2	/001.4	/001.6	/001.8	/001.9	/001.10
	/001.11	/001.12	/001.13	/001.14	/001.15	/001.16	/001.17
	/001.18	/001.19	/001.20	/001.21	/001.22	/001.23	/001.24
	/001.25	/001.26	/001.27	/001.28	/001.29	/001.30	/001.31
	/001.32	/001.33	/001.34	/001.35	/001.36	/001.37	/001.38
	/001.39	/001.40	/001.41	/001.42	/001.43	/001.44	/001.45
	/001.46	/001.47	/001.48	/001.49	/001.50	/001.51	/001.52
	/001.53	/001.54	/001.55	/001.56	/001.57	/001.58	/001.59
	/001.60	/001.61	/001.62	/001.63	/001.64	/001.65	/001.66
	/001.67	/001.68	/001.69	/001.70	/001.71	/001.72	/001.73
	/001.74	/001.75	/001.76	/001.77	/001.78	/001.79	/001.80
	/001.81	/001.82	/001.83	/001.84	/001.85	/001.86	/001.87
	/001.88	/001.89	/001.90	/001.91	/001.92	/001.93	/001.94
	/001.95	/001.96	/001.97	/001.98	/001.99	/001.100	/001.101
	/001.102	/001.103	/001.104	/001.105	/001.106	/001.107	/001.108
	/001.109	/001.110	/001.111	/001.112	/001.113	/001.114	/001.115
	/001.116	/001.117	/001.118	/001.119	/001.120	/001.121	/001.122
	/001.123	/001.124	/001.125	/001.126	/001.127	/001.128	/001.129
	/001.130	/001.131	/001.132	/001.133	/001.134	/001.135	/001.136
	/001.137	/001.138	/001.139	/001.140	/001.141	/001.142	/001.143
	/001.144	/001.145	/001.146	/001.147	/001.148	/001.149	/001.150
	/001.151	/001.152	/001.153	/001.154	/001.155	/001.156	/001.157
	/001.158	/001.159	/001.160	/001.161	/001.162	/001.163	/001.164
	/001.165	/001.166	/001.167	/001.168	/001.169	/001.170	/001.171
	/001.172	/001.173	/001.174	/001.175	/001.176	/001.177	/001.178
	/001.179	/001.180	/001.181	/001.182	/001.183	/001.184	/001.185
	/001.186	/001.187	/001.188	/001.189	/001.190	/001.191	/001.192
	/001.193	/001.194	/001.195	/001.196	/001.197	/001.198	/001.199
	/001.200	/001.201	/001.202	/001.203	/001.204	/001.205	/001.206
	/001.207	/001.208	/001.209	/001.210	/001.211	/001.212	/001.213
	/001.214	/001.215	/001.216	/001.217	/001.218	/001.219	/001.220
	/001.221	/001.222	/001.223	/001.224	/001.225	/001.226	/001.227
	/001.228	/001.229	/001.230	/001.231	/001.232	/001.233	/001.234
	/001.235	/001.236	/001.237	/001.238	/001.239	/001.240	/001.241
	/001.242	/001.243	/001.244	/001.245	/001.246	/001.247	/001.248
	/001.249	/001.250					

1 2 3 4 5 6 7 8

MOUNTING	451.1	APP.	
APPA. DESIG.	F301	REF.	
PIN	-XPE	ZZIF2.1	
MEANING		REF.	
GEHÄUSE ERDUNG		STATUS	
		PE	PE

GEHÄUSE
SCHUTZERDUNG

D0978101 Copyright as per DIN 34 to be observed!

07.12.2008
HJ0115NE
L09
ZIF21
ADAM

03	AS BUILT	5.12.2005	AD	Date	05.06.2005	US STEEL KOSICE/SLOVAKIA	50.3023.01-A4-711403	S	EL09	7	8
02	FACT. -REV.	30.10.2005	BL	Drawn	Hänticke	50.3023.01					
01	Approval	30.06.2005	Hae	Check	Grohmann	SUBSTATION T81					
NO.	Alteration	Date	Name	Sid.	Iss.for	Iss.by:	LIST OF EQUIPMENT	PANEL	09	Typ: 01	60Sh
										INCOMING FEEDER	
										D009781.01.609-3.AHA	

03	AS BUILT	5.12.2005	10	Date	06.06.2005	US STEEL KOSICE/SLOVAKIA		LIST OF EQUIPMENT		50.3023.01-44-741403	S=L09	/ Z1H1
02	FACT. - REV.	30.10.2005	BL	Drawn	Hönlcke	50.3023.01						
01	Approval	30.06.2005	Re	Check	Grohmann	SUBSTATION T81						
NO.	Alteration	Date	Name	Sid.		Orig.	iss for	iss by:	PANEL	Type: 01	D009781.01.609-3.AHA	Sheet 25
									09	INCOMING FEEDER		60SH.

										LIST OF EQUIPMENT		50. 3023. 01-44-741403		S = L09			
																	
										AREVA		PANEL		Type: 01		Sheet 26	
												09		INCINGING FEEDER		D009781.01.609-3.AHA	
										iss. by:						60Sh.	
										Orig.:							
										iss. for							
										Date							
										Name/Std.							
										Hoe							
										Check/							
										Grohmann							
										SUBSTATION T81							
										50. 3023. 01							
										Drawn/Hönicke							
										BL							
										30.10.2005							
										AD							
										Date							
										106. 06. 2005							
										US STEEL KOSICE/SLOVAKIA							

[illegible]

						Copyright as per DIN 34 to be observed					
D0978101						H0115ME L09 ZIR1 ADAM					
07.12.2006											
NO.						NO.					
Alteration						Date					
Approval						Check					
FACT.-REV.						BL					
AS BUILT						AD					
5.12.2005						06.06.2005					
US STEEL KOSICE/SLOVAKIA						LIST OF EQUIPMENT					
50.3023.01						50.3023.01-A4-741403					
SUBSTATION T81						TYP: 01					
Iss. by:						INCOMING FEEDER					
Panel						D009781.01.609-3.AHA					
Sheet 28						/ ZIR1					
60Sh.						8					

Manuf. Heine Resistors GmbH Type: EFM 60x300
Ord No.: 74201720027

DAMPING

RESISTANCE : 22 Ohm +/- 10% POWER : 430W
Technical components per device Typ Ordering number

Application Damping Resistance

Settings Location +S1.R Item designation -R452

03	AS BUILT	5.12.2005	AD	Date	06.06.2005	US STEEL KOSICE/SLOVAKIA		LIST OF EQUIPMENT		50. 3023. 01-A4-741403		S =L09		
02	FAST - REV.	30.10.2005	BL	Drawn	Hönlcke	50. 3023. 01			PANEL					
01	Approval	30.06.2005	Hoe	Checked	Grohmann	SUBSTAT ION T81			03		Typ: 01		Sheet 29	/ ZIS1
NO.	Alteration	Date	Name	Std.		Orig.:		iss.by:	INCORING FEEDER		D009781.01.609-3.AHA		60SH	

[illegible]

03	AS BUILT	5.12.2005	AD	Date	05.06.2005	US STEEL KOSICE/SLOVAKIA	50.3023.01	LIST OF EQUIPMENT	50.3023.01-A4-7*1403	S	509	8
02	FACT.-REV.	30.10.2005	BL	Drawn	Hänticke	50.3023.01						8
01	Approval	30.06.2005	Hoe	Checked	Grohmann	SUBSTATION T81						8
NO.	Alteration	Date	Named	Std.		Orig.	Iss. for	Iss. by:				8
												8

Copyright as per DIN 34 to be observed

D0978101

07.12.2006

HJ0115NE

509

ZC1

ADAN

3 CAPACITIVE COUPLING

Manuf. AREVA Sachsenwerk

Ord.No. : Type: H0-SYSTEM

2

3

4

5

6

7

8

SERIES : W1

Technical components per device

Ordering number

Application

CAP. TAPPING

CAP. TAPPING

CAP. TAPPING

Settings

+S2

+S2

+S2

Location

+S2

+S2

+S2

Item designation

-CL1

-CL2

-CL3

7/02.2

7/02.4

7/02.6

03

02

01

NO.

AS BUILT

FACT.-REV.

Approval

Alteration

5.12.2005

30.10.2005

30.06.2005

Date

AD

BL

Hoe

Named

Date

05.06.2005

30.10.2005

30.06.2005

US STEEL KOSICE/SLOVAKIA

50.3023.01

SUBSTATION T81

Orig.

Iss. for

Iss. by:

50.3023.01-A4-7*1403

LIST OF EQUIPMENT

PANEL

09

S

509

8

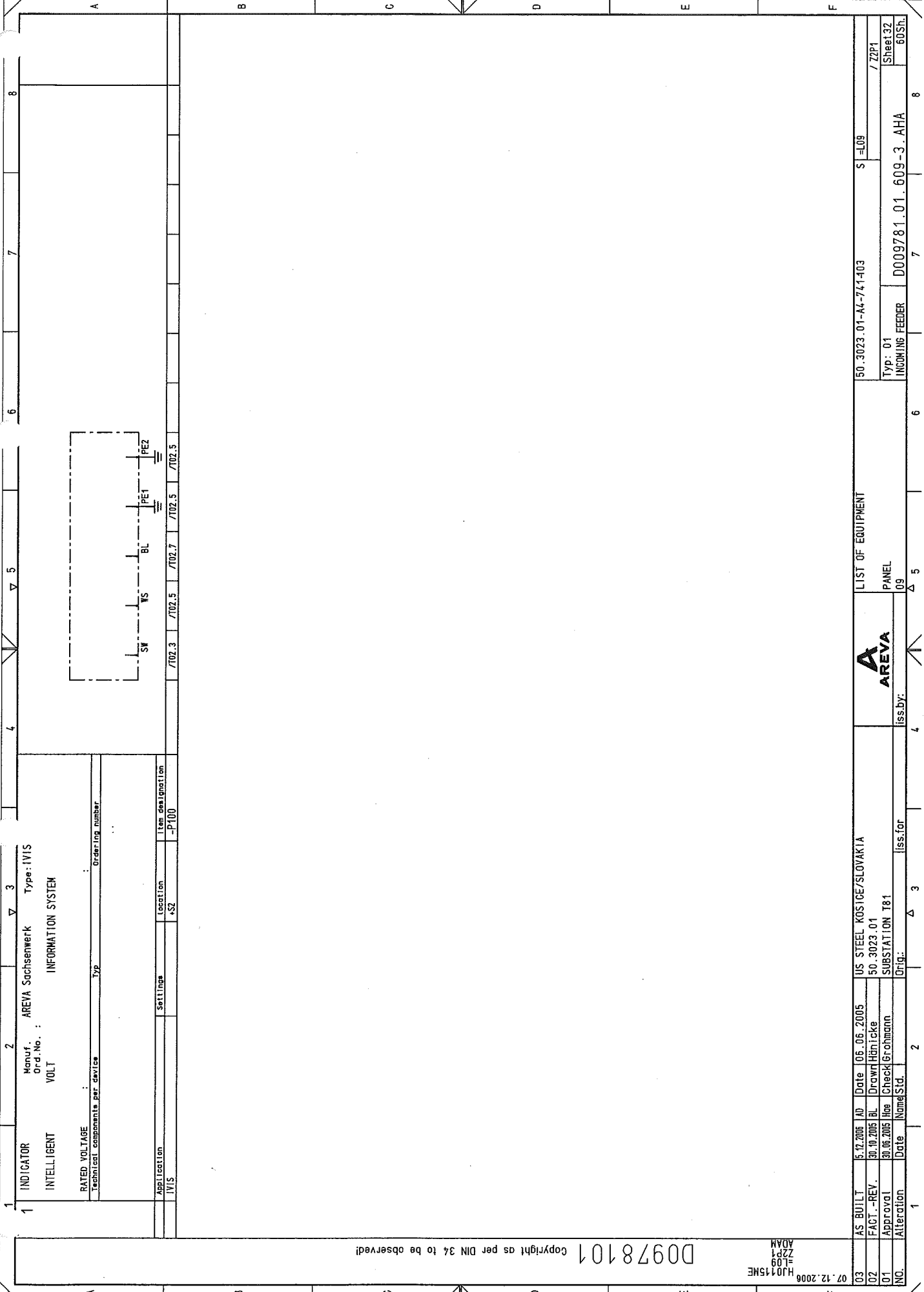
8

8

8

07.12.2008 H40115NE Z2P ADM

D0978101 Copyright as per DIN 34 to be observed!



03	AS BUILT	15.12.2008	AD	Date	06.06.2005	US STEEL KOSTICE/SLOVAKIA
02	FACT.-REV.	30.10.2005	BL	Drawn	Hörnigke	50.3023.01
01	Approval	30.06.2005	Rae	Check	Grohmann	SUBSTATION T81
NO.	Alteration	Date	Name	Std.	Iss.for	Orig.

		<div><div>A</div><div>AREVA</div></div>		LIST OF EQUIPMENT		50.3023.01-A4-741403		S=L09		/ ZP1	
				PANEL		09		Typ: 01		Sheet 32	
		Iss.by:						INCOMING FEEDER		D009781.01.609-3.AHA	
										60Sh.	

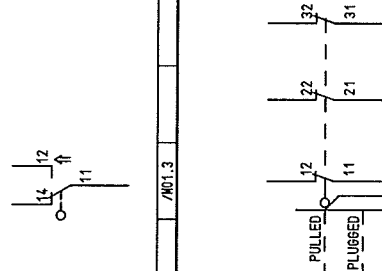
D0978101 Copyright as per DIN 34 to be observed!

H2015ME
Z51
L09
ADAK

07.12.2008

03	AS BUILT	5.12.2005	AD	Date	05.06.2005	US STEEL KOSICE/SLOVAKIA	LIST OF EQUIPMENT	50.3023.01-A4-741-103	S=L09	8
02	FACT.-REV.	30.10.2005	BL	Drawn	Hänicke	50.3023.01				7 Z51
01	Approval	30.06.2005	Hue	Check	Grohmann	SUBSTATION T81				Sheet 34
NO.	Alteration	Date	Name	Std.	Orig.	Iss. for	Iss. by:	INCOMING FEEDER	D009781.01.609-3.AHA	60Sh.

1	AUX. CONTACT ACTUATED BY INTERROGATOR	Manuf. : AREVA Sachsenwerk Ord.No. : Type: EARTHING SWITCH	1	SWITCH	Manuf. : AREVA Sachsenwerk Ord.No. : Type: (WB) PLUG PULLED OPERATED BY LOW-VOLTAGECONNECTOR (WB)	1	PLUG PULLED
SERIES : WB Technical components per device		DESIGNATION : Type		POSITIONS : 30 Type		Technical components per device	
Application		Settings		Location		Item designation	
				+S2		-S81	
				Manuf. : AREVA Sachsenwerk Ord.No. : Type: (WB) PLUG PULLED OPERATED BY LOW-VOLTAGECONNECTOR (WB)			
				Application		Settings	
						+S2	
						-S7	





PANEL

109

Δ

5

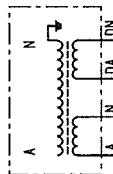
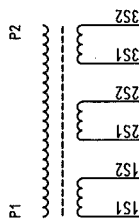
6

7

8

03	AS BUILT	5.12.2005	AD	Date	06.06.2005	US STEEL KOSICE/SLOVAKIA	LIST OF EQUIPMENT	50.3023.01-A4-741403	S	L09	8
02	FACT.-REV.	30.10.2005	BL	Drawn	Hánické	50.3023.01					
01	Approval	30.06.2005	Hae	Checked	Grohmann	SUBSTATION T81	PANEL				
NO.	Alteration	Date	Name	Std.	Orig.	Iss.for	Iss.by:	D009781.01.609-3.AHA	Typ: 01	INCOMING FEEDER	Sheet 35 60Sh

4		CURR. TRANSF.		MANUF.: SEE COVER SHEET		TYPE SEE COVER SHEET																																																																																																																																																																																																																																																																																																																																																																																																																																																																																																																																																																																																																																																																																																																																																																																																																																																																																																																																																																																																																																																																																																																																																																																																																																																																																			
---	--	---------------	--	-------------------------	--	----------------------	--	--	--	--	--	--	--	--	--	--	--	--	--	--	--	--	--	--	--	--	--	--	--	--	--	--	--	--	--	--	--	--	--	--	--	--	--	--	--	--	--	--	--	--	--	--	--	--	--	--	--	--	--	--	--	--	--	--	--	--	--	--	--	--	--	--	--	--	--	--	--	--	--	--	--	--	--	--	--	--	--	--	--	--	--	--	--	--	--	--	--	--	--	--	--	--	--	--	--	--	--	--	--	--	--	--	--	--	--	--	--	--	--	--	--	--	--	--	--	--	--	--	--	--	--	--	--	--	--	--	--	--	--	--	--	--	--	--	--	--	--	--	--	--	--	--	--	--	--	--	--	--	--	--	--	--	--	--	--	--	--	--	--	--	--	--	--	--	--	--	--	--	--	--	--	--	--	--	--	--	--	--	--	--	--	--	--	--	--	--	--	--	--	--	--	--	--	--	--	--	--	--	--	--	--	--	--	--	--	--	--	--	--	--	--	--	--	--	--	--	--	--	--	--	--	--	--	--	--	--	--	--	--	--	--	--	--	--	--	--	--	--	--	--	--	--	--	--	--	--	--	--	--	--	--	--	--	--	--	--	--	--	--	--	--	--	--	--	--	--	--	--	--	--	--	--	--	--	--	--	--	--	--	--	--	--	--	--	--	--	--	--	--	--	--	--	--	--	--	--	--	--	--	--	--	--	--	--	--	--	--	--	--	--	--	--	--	--	--	--	--	--	--	--	--	--	--	--	--	--	--	--	--	--	--	--	--	--	--	--	--	--	--	--	--	--	--	--	--	--	--	--	--	--	--	--	--	--	--	--	--	--	--	--	--	--	--	--	--	--	--	--	--	--	--	--	--	--	--	--	--	--	--	--	--	--	--	--	--	--	--	--	--	--	--	--	--	--	--	--	--	--	--	--	--	--	--	--	--	--	--	--	--	--	--	--	--	--	--	--	--	--	--	--	--	--	--	--	--	--	--	--	--	--	--	--	--	--	--	--	--	--	--	--	--	--	--	--	--	--	--	--	--	--	--	--	--	--	--	--	--	--	--	--	--	--	--	--	--	--	--	--	--	--	--	--	--	--	--	--	--	--	--	--	--	--	--	--	--	--	--	--	--	--	--	--	--	--	--	--	--	--	--	--	--	--	--	--	--	--	--	--	--	--	--	--	--	--	--	--	--	--	--	--	--	--	--	--	--	--	--	--	--	--	--	--	--	--	--	--	--	--	--	--	--	--	--	--	--	--	--	--	--	--	--	--	--	--	--	--	--	--	--	--	--	--	--	--	--	--	--	--	--	--	--	--	--	--	--	--	--	--	--	--	--	--	--	--	--	--	--	--	--	--	--	--	--	--	--	--	--	--	--	--	--	--	--	--	--	--	--	--	--	--	--	--	--	--	--	--	--	--	--	--	--	--	--	--	--	--	--	--	--	--	--	--	--	--	--	--	--	--	--	--	--	--	--	--	--	--	--	--	--	--	--	--	--	--	--	--	--	--	--	--	--	--	--	--	--	--	--	--	--	--	--	--	--	--	--	--	--	--	--	--	--	--	--	--	--	--	--	--	--	--	--	--	--	--	--	--	--	--	--	--	--	--	--	--	--	--	--	--	--	--	--	--	--	--	--	--	--	--	--	--	--	--	--	--	--	--	--	--	--	--	--	--	--	--	--	--	--	--	--	--	--	--	--	--	--	--	--	--	--	--	--	--	--	--	--	--	--	--	--	--	--	--	--	--	--	--	--	--	--	--	--	--	--	--	--	--	--	--	--	--	--	--	--	--	--	--	--	--	--	--	--	--	--	--	--	--	--	--	--	--	--	--	--	--	--	--	--	--	--	--	--	--	--	--	--	--	--	--	--	--	--	--	--	--	--	--	--	--	--	--	--	--	--	--	--	--	--	--	--	--	--	--	--	--	--	--	--	--	--	--	--	--	--	--	--	--	--	--	--	--	--	--	--	--	--	--	--	--	--	--	--	--	--	--	--	--	--	--	--	--	--	--	--	--	--	--	--	--	--	--	--	--	--	--	--	--	--	--	--	--	--	--	--	--	--	--	--	--	--	--	--	--	--	--	--	--	--	--	--	--	--	--	--	--	--	--	--	--	--	--	--	--	--	--	--	--	--	--	--	--	--	--	--	--	--	--	--	--	--	--	--	--	--	--	--	--	--	--	--	--	--	--	--	--	--	--	--	--	--	--	--	--	--	--	--	--	--	--	--	--	--	--	--	--	--	--	--	--	--	--	--	--	--	--	--	--	--	--	--	--	--	--	--	--	--	--	--	--	--	--	--	--	--	--	--	--	--	--	--	--	--	--	--	--	--	--	--	--	--	--	--	--	--	--	--	--	--	--	--	--	--	--	--	--	--	--	--	--	--	--	--	--	--	--	--	--	--	--	--	--	--	--	--	--	--	--	--	--	--	--	--	--	--	--	--	--	--	--	--	--	--	--	--	--	--	--	--	--	--	--	--	--	--	--	--	--	--	--	--	--	--	--	--	--	--	--	--	--	--	--	--	--	--	--	--	--	--	--	--	--	--	--	--	--	--	--	--	--	--	--	--	--	--	--	--	--	--	--	--	--	--	--	--	--	--	--	--	--	--	--	--	--	--	--	--	--	--	--	--	--	--	--	--	--	--	--	--	--	--	--	--	--	--	--	--	--	--	--	--	--	--	--	--	--	--	--	--	--	--	--	--	--	--	--	--	--	--	--	--	--	--	--	--	--	--	--	--	--	--	--	--	--	--	--	--	--	--	--	--	--	--	--	--	--	--	--	--	--	--	--	--

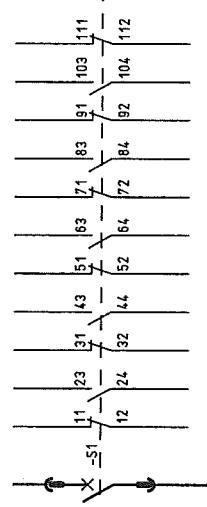


03	AS BUILT	5.2.2005	10	Date	06.06.2005	US STEEL KOSICE/SLOVAKIA	 AREVA	LIST OF EQUIPMENT		50_3023_01-A4-741-103		S = 109		
02	FACT. - REV.	30.10.2005	BL	Drawn	Hnticke	50_3023_01								
01	Approval	30.06.2005	Hsa	Check	Grohmann	SUBSTATION T81								/ Z301
NO.	Alteration	Date	Name/Sid.	Date	Iss. for	Iss. by:		09	PANEL	Type: 01	D009781_01_609-3_AHA		Sheet 37	
					Orig.:				09	INCOMING FEEDER			60Sh.	

D0978101 Copyright as per DIN 34 to be observed!

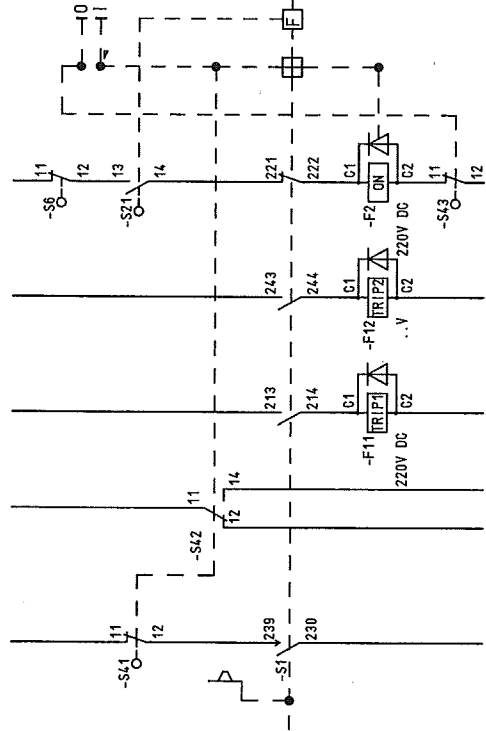
07.12.2006
HJ015ME
L09
Z302
ADAM

-S1 AUXILIARY SWITCH



CIRCUIT-BREAKER

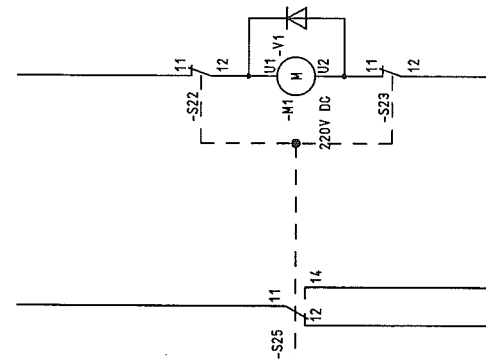
- S41 AUXILIARY CONTACT ON
PUSH-BUTTON ON/OFF
- S42 AUXILIARY CONTACT ON
PUSH-BUTTON ON/OFF
- F11 AUXILIARY TRIP RELEASE
- F12 AUXILIARY TRIP RELEASE
- F2 AUXILIARY CLOSING RELEASE
- S43 AUXILIARY CONTACT ON
PUSH-BUTTON OFF
- S21 AUX. CONTACT, ENERGY STORE
CONTROL
- AUXILIARY CONTACT
TRUCK INTERMEDIATE POSITION



AUXILIARY CONTACTS
ENERGY STORE MESSAGE

AUXIL. CONTACTS
ENERGY STORE MESSAGE

MOTORIZED ENERGY STORE



NO.	Alteration	Date	NomStid.	Iss.by:	Iss.for
01	Approval	30.06.2005	Hae	CheckGrohmann	SUBSTATION T81
02	FACT.-REV.	30.10.2005	BL	DrawHänske	50.3023.01
03	AS BUILT	5.12.2006	AD	Date	06.06.2005

US STEEL KOSICE/SLOVAKIA		LIST OF EQUIPMENT	
50.3023.01		50.3023.01-AL-741-403	
PANEL		S=L09	
09		TYP: 01	
INCOMING FEEDER		D009781.01.609-3.AHA	
60Sh.		Sheet38	
/ Z302		/ 2302	

50.3023.01-AL-741-403		S=L09	
TYP: 01		D009781.01.609-3.AHA	
INCOMING FEEDER		Sheet38	
60Sh.		/ 2302	

1

03	AS BUILT	5.12.2005	19	Date	06.06.2005	US STEEL K051CE/SLOVAKIA		TERMINAL DIAGRAM		50_3023.01-A4-741-103		V = L09	
02	F-ACT - REV.	30.10.2005	BL	Drawn	Hnaticke	50_3023_01		PANEL				*S1.R / K11	
01	Approval	30.06.2005	Hae	Check	Grohmann	SUBSTAT ION T81		Type: 01					
NO.	Alteration	Date	Name	Std.		Orig.	iss. for	iss. by:	09	INCOMING FEEDER		D009781.01_609-3_AHA	
												60Sh.	

D0978101 Copyright as per DIN 34 to be observed!

07.12.2006

07.12.2006																	00978101																	Copyright as per DIN 34 to be observed																																																																																																																																																																																																																																																																																																																																																																																																																																																																																																																																																																																																																																																																																																																																																																																																																																																																																																																																																																																																																																																																																																																																																																																																																																																																																																																																																																																																																																																																																																																																																																																																																																																																																																																																																																																																																																																																																																																																																																																																																																																																																																																																																																																																																																																																																																																																																																																																																																																																																																																																																																																																																																																																																																																																																																																																																																																																																																																																																																																																																																																																																																																																																																																																																																																																																																																																																																																																																																																																																																																																																																																																																																																																																																																																																																																																																																																																																																																																																																																																																																																																																																																																																																																																																																																																																																																																																																																																																																																																																																																																																																																																																																																																																																																																																																																																																																																																																																																																																																																																																																																																																																																																																																																																																																																																																																																																																																																																																																																																																																																																																																																																																																																																																																																																																																																																																																																																																																																																																																																																																																																																																																																																																																																																																																																																																																																																																																																																																																																																																																																																																																																																																																																																																																																																																																																																																																																																																																																																																																																																																																																																																																																																																																																																																																																																																																																																																																																																																																																																																																																																																																																																																																																																																																																																																																																																																																																																																																																																																																																																																																																																																																																																																																																																																																																																																																																																																																																																																																																																																																																																																																																																																																																																																																																																																																																																																																																																																																																																																																																																																																																																																																																																																																																																																																																																																																																																																																																	
03 AS BUILT																	5.12.2005																	AD																	Date																	06.06.2005																	US STEEL KOSICE/SLOVAKIA																	TERMINAL DIAGRAM																	50.3023.01-A4-741-403																	V=L09																	/K30																	Sheet42																	60Sh.																																																																																																																																																																																																																																																																																																																																																																																																																																																																																																																																																																																																																																																																																																																																																																																																																																																																																																																																																																																																																																																																																																																																																																																																																																																																																																																																																																																																																																																																																																																																																																																																																																																																																																																																																																																																																																																																																																																																																																																																																																																																																																																																																																																																																																																																																																																																																																																																																																																																																																																																																																																																																																																																																																																																																																																																																																																																																																																																																																																																																																																																																																																																																																																																																																																																																																																																																																																																																																																																																																																																																																																																																																																																																																																																																																																																																																																																																																																																																																																																																																																																																																																																																																																																																																																																																																																																																																																																																																																																																																																																																																																																																																																																																																																																																																																																																																																																																																																																																																																																																																																																																																																																																																																																																																																																																																																																																																																																																																																																																																																																																																																																																																																																																																																																																																																																																																																																																																																																																																																																																																																																																																																																																																																																																																																																																																																																																																																																																																																																																																																																																																																																																																																																																																																																																																																																																																																																																																																																																																																																																																																																																																																																																																																																																																																																																																																																																																																																																																																																																																																																																																																																																																																																																																																																																																																																																																																																																																																																																																																																																																																																																																																																																																																																																																																																																																																																																																																																																																																																																																																																																																																																																																																																																																																																																																																																																																																																																																																																																																																																																																																																																																																																																																																																																								
02 FACI.-REV.																	30.10.2005																	BL																	Draught																	Hännicke																	50.3023.01																																																																																																																																																																																																																																																																																																																																																																																																																																																																																																																																																																																																																																																																																																																																																																																																																																																																																																																																																																																																																																																																																																																																																																																																																																																																																																																																																																																																																																																																																																																																																																																																																																																																																																																																																																																																																																																																																																																																																																																																																																																																																																																																																																																																																																																																																																																																																																																																																																																																																																																																																																																																																																																																																																																																																																																																																																																																																																																																																																																																																																																																																																																																																																																																																																																																																																																																																																																																																																																																																																																																																																																																																																																																																																																																																																																																																																																																																																																																																																																																																																																																																																																																																																																																																																																																																																																																																																																																																																																																																																																																																																																																																																																																																																																																																																																																																																																																																																																																																																																																																																																																																																																																																																																																																																																																																																																																																																																																																																																																																																																																																																																																																																																																																																																																																																																																																																																																																																																																																																																																																																																																																																																																																																																																																																																																																																																																																																																																																																																																																																																																																																																																																																																																																																																																																																																																																																																																																																																																																																																																																																																																																																																																																																																																																																																																																																																																																																																																																																																																																																																																																																																																																																																																																																																																																																																																																																																																																																																																																																																																																																																																																																																																																																																																																																																																																																																																																																																																																																																																																																																																																																																																																																																																																																																																																																																																																																																																																																																																																																																																																																																																																																																																																																																																																																																																																																																														

03	AS BUILT	5.2.2005	ID	Date	10.06.2005	US STEEL KOSICE/SLOVAKIA		TERMINAL DIAGRAM		50_3023_01-A4-741403		V	=L09		
02	FACT. - REV.	30.10.2005	BL	Drawn	Hönlcke	50_3023_01			PANEL				+S1.R		
01	Approval	30.06.2005	lha	Check	Grohmann	SUBSTATION T81			Type: 01						Sheet 43
NO.	Alteration	Date	Name	Sld.		Orig.	iss. for	iss. by:	09	D009781.01_609-3_AHA		60Sh.			

1												2												3												4												5												6												7												8																																																																																																																																																																																																																																																																																																																																																																																																																																																																																																																																																																																																																																																																																																																																																																																																																																																																																																																																																																																																																																																																																																																																																																																																																																																																																																																																																																																																																																																																																																																																																																																																																																																																																																																																																																																																																																																																																																																																																																																																																																																																																																																																																																																																																																																																																																																																																																																																																																																																																																																																																																																																																																																																																																																																																																																																																																																																																																																																																																																																																																																																																																																																																																																																																																																																																																																																																																																																																																																																																																																																																																																																																																																																																																																																																																																																																																																																																																																																																																																																																																																																																																																																																																																																																																																																																																																																																																																																																																																																																																																																																																																																																																																																																																																																																																																																																																																																																																																																																																																																																							
CABLE												WIRES USED SHEET STATE												CABLE TYPE SECTION												CORES												-ROUTE												CIRCUIT DIAGRAM												CABLE MATERIAL												Ø												COLOR												TERM. TYPE																																																																																																																																																																																																																																																																																																																																																																																																																																																																																																																																																																																																																																																																																																																																																																																																																																																																																																																																																																																																																																																																																																																																																																																																																																																																																																																																																																																																																																																																																																																																																																																																																																																																																																																																																																																																																																																																																																																																																																																																																																																																																																																																																																																																																																																																																																																																																																																																																																																																																																																																																																																																																																																																																																																																																																																																																																																																																																																																																																																																																																																																																																																																																																																																																																																																																																																																																																																																																																																																																																																																																																																																																																																																																																																																																																																																																																																																																																																																																																																																																																																																																																																																																																																																																																																																																																																																																																																																																																																																																																																																																																																																																																																																																																																																																																																																																																																																																																																																																																																															
NO.												1												2												3												4												5												6												7												8												9												10												11												12																																																																																																																																																																																																																																																																																																																																																																																																																																																																																																																																																																																																																																																																																																																																																																																																																																																																																																																																																																																																																																																																																																																																																																																																																																																																																																																																																																																																																																																																																																																																																																																																																																																																																																																																																																																																																																																																																																																																																																																																																																																																																																																																																																																																																																																																																																																																																																																																																																																																																																																																																																																																																																																																																																																																																																																																																																																																																																																																																																																																																																																																																																																																																																																																																																																																																																																																																																																																																																																																																																																																																																																																																																																																																																																																																																																																																																																																																																																																																																																																																																																																																																																																																																																																																																																																																																																																																																																																																																																																																																																																																																																																																																																																																																																																																																																																																																																																																																																																																											
RÜCK-REF.												/S01.2												/S01.2												/S01.2												/S01.2												/S01.3												/S01.3												/S01.3												/S01.3												/S01.3												/S01.3												/S01.3												/S01.3												/S01.3												/S01.3												/S01.3												/S01.3												/S01.3												/S01.3												/S01.3												/S01.3												/S01.3												/S01.3												/S01.3												/S01.3												/S01.3												/S01.3												/S01.3												/S01.3												/S01.3												/S01.3												/S01.3												/S01.3												/S01.3												/S01.3												/S01.3												/S01.3												/S01.3												/S01.3												/S01.3												/S01.3												/S01.3												/S01.3												/S01.3												/S01.3												/S01.3												/S01.3												/S01.3												/S01.3												/S01.3												/S01.3												/S01.3												/S01.3												/S01.3												/S01.3												/S01.3												/S01.3												/S01.3												/S01.3												/S01.3												/S01.3												/S01.3												/S01.3												/S01.3												/S01.3												/S01.3												/S01.3												/S01.3												/S01.3												/S01.3												/S01.3												/S01.3												/S01.3												/S01.3												/S01.3												/S01.3												/S01.3												/S01.3												/S01.3												/S01.3												/S01.3												/S01.3												/S01.3												/S01.3												/S01.3												/S01.3												/S01.3												/S01.3												/S01.3												/S01.3												/S01.3												/S01.3												/S01.3												/S01.3												/S01.3												/S01.3												/S01.3												/S01.3												/S01.3												/S01.3												/S01.3												/S01.3												/S01.3												/S01.3												/S01.3												/S01.3												/S01.3												/S01.3												/S01.3												/S01.3												/S01.3												/S01.3												/S01.3												/S01.3												/S01.3												/S01.3												/S01.3												/S01.3												/S01.3												/S01.3												/S01.3												/S01.3												/S01.3												/S01.3												/S01.3												/S01.3												/S01.3												/S01.3												/S01.3												/S01.3												/S01.3												/S01.3												/S01.3												/S01.3												/S01.3												/S01.3												/S01.3												/S01.3												/S01.3												/S01.3												/S01.3												/S01.3												/S01.3												/S01.3												/S01.3												/S01.3												/S01.3												/S01.3												/S01.3												/S01.3												/S01.3												/S01.3												/S01.3												/S01.3												/S01.3												/S01.3												/S01.3												/S01.3												/S01.3												/S01.3												/S01.3												/S01.3												/S01.3												/S01.3												/S01.3												/S01.3												/S01.3												/S01.3												/S01.3												/S01.3												/S01.3												/S01.3												/S01.3												/S01.3												/S01.3												/S01.3												/S01.3												/S01.3												/S01.3												/S01.3												/S01.3												/S01.3												/S01.3												/S01.3												/S01.3												/S01.3												/S01.3												/S01.3												/S01.3												/S01.3												/S01.3												/S01.3												/S01.3												/S01.3												/S01.3												/S01.3												/S01.3												/S01.3												/S01.3												/S01.3												/S01.3												/S01.3												/S01.3												/S01.3												/S01.3												/S01.3												/S01.3												/S01.3												/S01.3												/S01.3												/S01.3												/S01.3												/S01.3												/S01.3												/S01.3												/S01.3												/S01.3												/S01.3												/S01.3												/S01.3												/S01.3												/S01.3												/S01.3												/S01.3												/S01.3												/S01.3												/S01.3												/S01.3												/S01.3												/S01.3												/S01.3												/S01.3												/S01.3												/S01.3												/S01.3												/S01.3												/S01.3												/S01.3												/S01.3												/S01.3												/S01.3												/S01.3												/S01.3												/S01.3												/S01.3												/S01.3												/S01.3												/S01.3												/S01.3												/S01.3												/S01.3												/S01.3												/S01.3												/S01.3												/S01.3												/S01.3												/S01.3												/S01.3												/S01.3												/S01.3												/S01.3												/S01.3												/S01.3												/S01.3												/S01.3												/S01.3												/S01.3												/S01.3												/S01.3												/S01.3												/S01.3												/S01.3												/S01.3												/S01.3												/S01.3												/S01.3												/S01.3												/S01.3												/S01.3												/S01.3												/S01.3												/S01.3												/S01.3												/S01.3												/S01.3												/S01.3												/S01.3												/S01.3												/S01.3												/S01.3												/S01.3												/S01.3												/S01.3												/S01.3												/S01.3												/S01.3												/S01.3												/S01.3												/S01.3												/S01.3												/S01.3												/S01.3												/S01.3												/S01.3												/S01.3												/S01.3												/S01.3												/S01.3												/S01.3												/S01.3												/S01.3												/S01.3												/S01.3												/S01.3												/S01.3												/S01.3												/S01.3												/S01.3												/S01.3												/S01.3												/S01.3												/S01.3												/S01.3												/S01.3												/S01.3												/S01.3												/S01.3												/S01.3												/S01.3												/S01.3												/S01.3												/S01.3												/S01.3												/S01.3												/S01.3												/S01.3												/S01.3												/S01.3												/S01.3												/S01.3												/S01.3												/S01.3												/S01.3												/S01.3												/S01.3												/S01.3												/S01.3												/S01.3												/S01.3												/S01.3												/S01.3												/S01.3												/S01.3												/S01.3												/S01.3												/S01.3												/S01.3												/S01.3												/S01.3												/S01.3												/S01.3												/S01.3												/S01.3												/S01.3												/S01.3												/S01.3												/S01.3												/S01.3												/S01.3												/S01.3												/S01.3												/S01.3												/S01.3												/S01.3												/S01.3												/S01.3												/S01.3												/S01.3												/S01.3												/S01.3												/S01.3												/S01.3												/S01.3												/S01.3												/S01.3												/S01.3												/S01.3												/S01.3												/S01.3												/S01.3												/S01.3												/S01.3												/S01.3												/S01.3												/S01.3												/S01.3												/S01.3												/S01.3												/S01.3												/S01.3												/S01.3												/S01.3												/S01.3												/S01.3												/S01.3												/S01.3												/S01.3												/S01.3												/S01.3											

03	AS BUILT	5.12.2005	AD	Date	06.06.2005	US STEEL KOSICE/SLOVAKIA	 AREVA	TERMINAL DIAGRAM		50_3023_01-A4-747403	V=L09	Sheet 45 60Sh.	
02	FACT. -REV.	30.10.2005	BL	Drawn	Hönlcke	50_3023_01		PANEL			+S1.R		/K51
01	Approval	30.06.2005	Hae	Check	Grohmann	SUBSTATION T81		09		Type: 01 INCOMING FEEDER	D009781.01_609-3_AHA		
NO.	Alteration	Date	Name/Sid.	Orig.	Iss for	Iss by:							

1	2	3	4	5	6	7	8
NO	CABLE	WIRES USED	SHEET STATE	CABLE-TYPE SECTION	CORES	ROUTE	CIRCUIT DIAGRAM
Rück-REF.	DESTINAT. DESIG.	EXTERNAL	POT	NO	CORES/ LINE	DESTINAT. DESIG.	INTERNAL
7/01.2							
7/01.2							
7/01.6							
7/01.3							
7/01.2							
7/01.6							
7/01.4							
7/01.3							
7/01.6							
7/01.4							
7/01.3							
7/01.7							
7/01.7							
7/01.7							
7/01.8							
7/01.6							
7/01.6							
7/01.8							

Copyright as per DIN 34 to be observed!

00978101

03 AS BUILT 5.12.2005 AD Date 06.06.2005

02 FACT -REV. 30.10.2005 BL Drawl Hönicke

01 Approval 30.06.2005 Hae Check Grohmann

NO. Alteration Date Name/Std.

US STEEL KOSICE/SLOVAKIA

50.3023.01

SUBSTATION T81

Orig. Iss. for

Panel 109

Terminal Diagram

50.3023.01-A4-741-403

V-L09

+S1.R

/K60



Sheet 46

60Sh.

1

03	AS BUILT	5.2.2005	40	Date	06.06.2005	US STEEL KOSICE/SLOVAKIA	 AREVA	TERMINAL DIAGRAM	50_3023_01-A4-741403	V=109 +S1.R	/ K82
02	FACT. - REV.	30.10.2005	BL	Drawn	Hantičke	50_3023_01					
01	Approval	30.06.2005	Hae	Check	Grohmann	SUBSTATION T81					
NO.	Alteration	Date	Name	Sld.	Orig.	Iss. for	iss.by:	09	INCOMING FEEDER	D009781.01.609-3. AHA	60Sh.

03	AS BUILT	5.12.2005	40	Date	06.06.2005	US STEEL KOSICE/SLOVAKIA	 AREVA	TERMINAL DIAGRAM		50_3023_01-44-741403	Y=L09	
02	FACT.-REV.	30.10.2005	BL	Drawn	Hancke	50_3023_01			PANEL			+S1.R
01	Approval	30.10.2005	BL	Check	Grohmann	SUBSTATION 181		PANEL		Typ: 01		
NO.	Alteration	Date	Name	Sld.	Ofic.	Iss for	Iss by:	09		INGOM NG FEEDER	D009781.01_609-3_AHA	Sheet 50 60Sp.

03	AS BUILT	5.12.2005	AD	05.06.2005	US STEEL KOSTICE/SLOVAKIA	<div> AREVA</div>	TERMINAL DIAGRAM			50.3023.01-A4-741-403	V = 0,09
02	FACT -REV.	30.10.2005	RL	Drawn Hönicke	50.3023.01		PANEL			Typ: 01	+SI.R
01	Approval	30.06.2005	Hae	Check Grohmann	SUBSTATION T81		09			INCOMING FEEDER	Sheet 151
NO.	Alteration	Date	Name/Std.	Iss. for	Iss. by:				D009781.01.609-3. AHA	60Sh.	
				1	2	3	4	5	6	7	8

CROSS CONNECTION

REFERENCE	POTENTIAL ITEM CR. SECTION	CABLE MATERIAL COLOR	OUTPUT TERMINAL	DESTINATION 1	DESTINATION 2	DESTINATION 3	DESTINATION 4	DESTINATION 5	DESTINATION 6
601	D0220V L+	H07V-K SW	-X0	12 -F101	1 -F102	1 -F103			
601	D0220V L-	H07V-K SW	-X0	14 -F101	3 -F102	3 -F103			
601	102L+	H07V-K SW	-X1	103 -U401	13 -U402				
601	102L-	H07V-K SW	-X1	108 -U401	14 -U402				
M01	1.5MM2	H07V-K SW	-X1	117 -K0A	14 -K200	14			
M01	1.5MM2	H07V-K SW	-X1	118 -K0A	13 -K0E	13			
M01	1.5MM2	H07V-K SW	-X1	119 -K0E	14 -K200	21			
002	1.5MM2	H07V-K SW	-X8	815 -K0A	A2 -K0E	A2			
003	1.5MM2	H07V-K SW	-X8	808 -F101	12 -F102	12 -F103			
003	1.5MM2	H07V-K SW	-X8	809 -F451	R12 -F452	12			
003	1.5MM2	H07V-K SW	-X8	824 -F101	11 -F102	11 -F103			
003	1.5MM2	H07V-K SW	-X8	825 -F451	R11 -F452	11			
R01	1.5MM2	H07V-K SW	-X4	-K0A	22 -K0E	21			
R01	102L+	H07V-K SW	-X4	404 -F451	R22 -K0E	43			
R01	1.5MM2	H07V-K SW	-X4	416 -F101	22 -F102	22 -F103			
R01	1.5MM2	H07V-K SW	-X4	418 -F101	21 -F102	21 -F103			
R01	1.5MM2	H07V-K SW	-X4	419 -F451	L12 -F452	22			
R01	1.5MM2	H07V-K SW	-X4	420 -F451	L11 -F452	21			
S01	2.5MM2	H07V-K SW	-X4	-U401	3 -U402	1			
S01	2.5MM2	H07V-K SW	-X4	-U401	6 -U402	4			

03	AS BUILT	5.12.2005	AD	Date	06.06.2005	US STEEL KOSICE/SLOVAKIA	CROSS CONNECT. LIST	50.3023.01-A4-741403	V -L09	/ 010
02	FACT. -REV.	30.10.2005	BL	Date	30.10.2005	Drawn Hönigke	RELAY BOX		+ST.R	
01	Approval	30.06.2005	Hoe	Date	30.06.2005	Check Grahmann	PANEL			
NO.	Alteration			Date			09			
Iss. for						Iss. by:	D009781.01.609-3.AHA			
Orig.						INCOMING FEEDER				
						Sheet 52				
						60Sh				

Copyright as per DIN 34 to be observed!

00978101
H0115ME
H0109+ST
ADAM

CROSS CONNECTION

[illegible]

TERMINAL DIA. , 64-POLE , CIRCUIT-BREAKER SOCKET

+S1.R -X01
 CABLE MATERIAL H05V-K 1.0mm2 SW

A			B			C			
+									+
1	-X1 /001.2 H05V-K 1.0MM2 SW	101	-X8 /002.4 H05V-K 1.0MM2 SW	817	-X1 /001.6	134	-X3 /001.3 H05V-K 1.0MM2 SW	313	1
2	-X1 /001.2 H05V-K 1.0MM2 SW	102	-X8 /005.2 H05V-K 1.0MM2 SW	860	-X1 /001.6	110	-X8 /002.5 H05V-K 1.0MM2 SW	804	2
3	-X1 /001.6 H05V-K 1.0MM2 SW	116	-X8 /005.2 H05V-K 1.0MM2 SW	867			-X8 /002.5 H05V-K 1.0MM2 SW	818	3
4	-X1 /001.6 H05V-K 1.0MM2 SW	110	-X8 /005.2 H05V-K 1.0MM2 SW	868			-X8 /002.5 H05V-K 1.0MM2 SW	820	4
5	-X1 /001.7 H05V-K 1.0MM2 SW	121	-X0 /001.3 H05V-K 1.0MM2 SW	5	-X8 /005.4 H05V-K 1.0MM2 SW	863			5
6	-X1 /001.7 H05V-K 1.0MM2 SW	123	-X0 /001.3 H05V-K 1.0MM2 SW	7	-X8 /005.4 H05V-K 1.0MM2 SW	871			6
7	-X9 /001.4 H05V-K 1.0MM2 SW	905	-X9 /001.2 H05V-K 1.0MM2 SW	901			-X8 /005.4 H05V-K 1.0MM2 SW	864	7
8	-X9 /001.3 H05V-K 1.0MM2 SW	919	-X9 /001.2 H05V-K 1.0MM2 SW	915			-X8 /005.4 H05V-K 1.0MM2 SW	872	8
9	-X9 /001.4 H05V-K 1.0MM2 SW	920	-X9 /001.2 H05V-K 1.0MM2 SW	902	-X9 /001.3 H05V-K 1.0MM2 SW	903			9
10	-X4 /001.3 H05V-K 1.0MM2 SW	410	-X9 /001.2 H05V-K 1.0MM2 SW	916	-X9 /001.3 H05V-K 1.0MM2 SW	917			10
11	-X1 /001.3 H05V-K 1.0MM2 SW	411	-X9 /001.4 H05V-K 1.0MM2 SW	906	-X9 /001.3 H05V-K 1.0MM2 SW	904	-X9 /001.5 H05V-K 1.0MM2 SW	907	11
12	-X3 /001.2 H05V-K 1.0MM2 SW	302	-X9 /001.4 H05V-K 1.0MM2 SW	971	-X9 /001.3 H05V-K 1.0MM2 SW	918	-X9 /001.5 H05V-K 1.0MM2 SW	922	12
13	-X3 /001.2 H05V-K 1.0MM2 SW	309	-X8 /005.3 H05V-K 1.0MM2 SW	862					13
14	-X3 /001.2 H05V-K 1.0MM2 SW	310	-X8 /005.3 H05V-K 1.0MM2 SW	870					14
15	-X8 /002.3 H05V-K 1.0MM2 SW	803	-X8 /005.3 H05V-K 1.0MM2 SW	861	-X3 /001.3 H05V-K 1.0MM2 SW	303			15
16	-X8 /002.3 H05V-K 1.0MM2 SW	816	-X8 /005.3 H05V-K 1.0MM2 SW	809	-X3 /001.3 H05V-K 1.0MM2 SW	311			16
+									+

Subject to technical modifications!
 Copyright as per DIN 34 to be observed!

07.12.2006
 HJ015ME
 50199+51
 ADAM

03	AS BUILT	5.12.2005	AD	Date	06.06.2005	US STEEL KOSICE/SLOVAKIA	PLUG DIAGRAM	150.3023.01-44-741-403	V	109	/ S01
02	FACT.-REV.	30.10.2005	BL	Drawn	Hänicke	50.3023.01	CIRCUIT-BREAKER				
01	Approval	30.06.2005	Hae	Check	Grohmann	SUBSTATION T81	PANEL				Sheet54
NO.	Alteration	Date	Name	Std.	Orig.	Iss.for	Iss.by:	INGOMING FEEDER	D009781.01.609-3.AHA	Typ: 01	60Sh.

CROSS CONNECTION

REFERENCE	POTENTIAL ITEM CR. SECTION	CABLE MATERIAL COLOR	OUTPUT TERMINAL	DESTINATION 1	DESTINATION 2	DESTINATION 3	DESTINATION 4	DESTINATION 5	DESTINATION 6
D01	0 1.0MM2	H05Y-K SW		X01	B05 -S1	-00 71			
D01	0 1.0MM2	H05Y-K SW		X01	B06 -S1	-00 72			
L01	102L+ 0 1.0MM2	H05Y-K SW		X01	A01 -S22	-00 11			
L01	102L- 0 1.0MM2	H05Y-K SW		X01	A02 -S23	-00 12			
M01	0 1.0MM2	H05Y-K SW		F11	C1 -S1	-00 214			
M01	0 1.0MM2	H05Y-K SW		F2	C1 -S1	-00 222			
M01	0 1.0MM2	H05Y-K SW		F2	C2 -S43	-00 11			
M01	0 1.0MM2	H05Y-K SW		S1	221 -S21	-00 14			
M01	0 1.0MM2	H05Y-K SW		S21	13 -S6	-00 12			
M01	0 1.0MM2	H05Y-K SW		X01	A03 -S1	-00 213			
M01	102L- 0 1.0MM2	H05Y-K SW		X01	A04 -F11	-00 C2			
M01	0 1.0MM2	H05Y-K SW		X01	A05 -S6	-00 11			
M01	0 1.0MM2	H05Y-K SW		X01	A06 -S43	-00 12			
001	102L+ 0 1.0MM2	H05Y-K SW		X01	A12 -S1	-00 11 -S1 23			
001	0 1.0MM2	H05Y-K SW		X01	A13 -S1	-00 12			
001	0 1.0MM2	H05Y-K SW		X01	A14 -S1	-00 24			
001	102L+ 0 1.0MM2	H05Y-K SW		X01	C15 -S1	-001 11 -S1 13			
001	0 1.0MM2	H05Y-K SW		X01	C16 -S1	-001 12			
001	0 1.0MM2	H05Y-K SW		X01	D01 -S1	-001 14			
002	0 1.0MM2	H05Y-K SW		X01	A15 -S1	-00 31 -S1 43			

07.12.2006

H0115ME

030

030

ADAM

03

AS BUILT

5.12.2006

AD

Date 106.06.2005

US STEEL KOSICE/SLOVAKIA

50.3023.01

50.3023.01

50.3023.01-AA-741-103

V=L09

+S3

/030

02

FACT.-REV.

30.10.2005

BL

Draht H4n1c1c

50.3023.01

50.3023.01-AA-741-103

V=L09

+S3

/030

01

Approval

30.06.2005

lee

Greck Grohmann

SUBSTATION T81

50.3023.01

50.3023.01-AA-741-103

V=L09

+S3

/030

NO.

Alteration

Date

Name

Std.

Iss. for

Iss. by:

50.3023.01

50.3023.01-AA-741-103

V=L09

+S3

/030

1

2

3

4

5

6

7

8

00978101

Copyright as per DIN 34 to be observed

00978101

Sheet 57

60Sh.

0009781.01.609-3.AHA

Typ: 01

INCOMING FEEDER

0009781.01.609-3.AHA

Sheet 57

60Sh.

03	AS BUILT	15.12.2005	AD	Date	106.06.2005	US STEEL KOSICE/SLOVAKIA
02	FACT.-REV.	30.10.2005	BL	Drawn	Hänticke	50.3023.01
01	Approval	30.06.2005	Hoe	Checked	Grohmann	SUBSTATION T81
NO.	Alteration	Date	Name	Std.	Iss. for	Iss. by:

CROSS CONNECTION LIST
 SWITCHING TRUCK
 PANEL
 50.3023.01-A4-741-403
 Typ: 01
 INCOMING FEEDER
 D009781.01.609-3.AHA
 Sheet 57
 60Sh

Copyright as per DIN 34 to be observed!
 D00978101
 HJ015ME
 030
 09.53
 07.12.2006
 ADAM

CROSS CONNECTION											6		7		8	
REFERENCE	POTENTIAL ITEM CR. SECTION	CABLE MATERIAL COLOR	OUTPUT TERMINAL	DESTINATION 1	DESTINATION 2	DESTINATION 3	DESTINATION 4	DESTINATION 5	DESTINATION 6							
002	0 1.0MW2	H05Y-K SW	-X01	A16 -S1	-00 32											
002	0 1.0MW2	H05Y-K SW	-X01	B01 -S1	-00 44											
002	0 1.0MW2	H05Y-K SW	-X01	D02 -S1	-001 21 -S1	-001 23										
002	0 1.0MW2	H05Y-K SW	-X01	D03 -S1	-001 22											
002	0 1.0MW2	H05Y-K SW	-X01	D04 -S1	-001 24											
005	0 1.0MW2	H05Y-K SW	-X01	B02 -S1	-00 51 -S1	-00 63										
005	0 1.0MW2	H05Y-K SW	-X01	B03 -S1	-00 52											
005	0 1.0MW2	H05Y-K SW	-X01	B04 -S1	-00 64											
005	0 1.0MW2	H05Y-K SW	-X01	B13 -S42	-00 11											
005	0 1.0MW2	H05Y-K SW	-X01	B14 -S42	-00 14											
005	0 1.0MW2	H05Y-K SW	-X01	B15 -S25	-00 11											
005	0 1.0MW2	H05Y-K SW	-X01	B16 -S25	-00 14											
005	0 1.0MW2	H05Y-K SW	-X01	C05 -S1	-001 31											
005	0 1.0MW2	H05Y-K SW	-X01	C06 -S1	-001 32											
005	0 1.0MW2	H05Y-K SW	-X01	D07 -S1	-001 33											
005	0 1.0MW2	H05Y-K SW	-X01	D08 -S1	-001 34											
R01	0 1.0MW2	H05Y-K SW	-S1	-00 239 -S41	-00 12											
R01	0 1.0MW2	H05Y-K SW	-X01	A10 -S41	-00 11											
R01	0 1.0MW2	H05Y-K SW	-X01	A11 -S1	-00 230											
V01	0 1.0MW2	H05Y-K SW	-X01	A07 -S24	-00 11											
Copyright as per DIN 34 to be observed!											50.3023.01-A4-741-403		V -L09		/ 031	
D00978101											SWITCHING TRUCK		+S3		Sheet158	
H0115NE											PANEL		Typ: 01		D009781.01.609-3.AHA	
03.09.03											INGOMING FEEDER		60Sh			
ADAN																
07.12.2008																
AS BUILT											GROSS CONNECT. LIST					
5.12.2005 AD Date 06.06.2005											US STEEL K05/CE/SLOVAKIA					
30.10.2005 BL Drawn Hönlacke											50.3023.01					
30.06.2005 Hoe Checked Grohmann											SUBSTATION T81					
Approval											Orig.		iss. for			
Alteration											Date		Name		Sid.	

CROSS CONNECTION

REFERENCE	POTENTIAL ITEM CR. SECTION	CABLE MATERIAL COLOR	OUTPUT TERMINAL	DESTINATION 1	DESTINATION 2	DESTINATION 3	DESTINATION 4	DESTINATION 5	DESTINATION 6
V01	0 1.0MM2	H05Y-K SW	-X01	A08 -S24	-00 12				
V01	0 1.0MM2	H05Y-K SW	-X01	A09 -S24	-00 14				
V01	0 1.0MM2	H05Y-K SW	-X01	B07 -S1	-00 83				
V01	0 1.0MM2	H05Y-K SW	-X01	B08 -S1	-00 84				
V01	0 1.0MM2	H05Y-K SW	-X01	B09 -S1	-00 91				
V01	0 1.0MM2	H05Y-K SW	-X01	B10 -S1	-00 92				
V01	0 1.0MM2	H05Y-K SW	-X01	B11 -S1	-001 41				
V01	0 1.0MM2	H05Y-K SW	-X01	B12 -S1	-001 42				
V01	0 1.0MM2	H05Y-K SW	-X01	C09 -S1	-00 103				
V01	0 1.0MM2	H05Y-K SW	-X01	C10 -S1	-00 104				
V01	0 1.0MM2	H05Y-K SW	-X01	C11 -S1	-00 111				
V01	0 1.0MM2	H05Y-K SW	-X01	C12 -S1	-00 112				
V01	0 1.0MM2	H05Y-K SW	-X01	D11 -S1	-001 43				
V01	0 1.0MM2	H05Y-K SW	-X01	D12 -S1	-001 44				

03	AS BUILT	5.12.2005	AD	Date	06.06.2005	US STEEL KOSICE/SLOVAKIA	50.3023.01	ISSUE	1
02	FACT. -REV.	30.10.2005	BL	Drawn	Hönlake	50.3023.01	SUBSTATION T81	ISS. FOR	2
01	Approval	30.06.2005	Re	Check	Grohmann	50.3023.01	ISS. BY	AREVA	4
NO.	Alteration	Date	Name	Sid.	Orig.	Iss. for	Iss. by	Iss. by	8

Copyright as per DIN 34 to be observed!

TERMINAL DIA. , 64 POLIG , CIRCUIT-BREAKER PIN

+S3 -X01
CABLE MATERIAL H05V-K 1.0mm2 SW

A				B				C				D				+
1	-00	-S22	11	-00	-S1	44	19	-00	-S1	243	14	-001	-S1	14	1	+
2	-00	-S23	12	-00	-S1	51	20	-00	-F12	02	21	-001	-S1	21	2	
3	-00	-S1	213	-00	-S1	52	20	-00	-F12	02	22	-001	-S1	22	3	
4	-00	-F11	02	-00	-S1	64	20	-00	-S1	02	24	-001	-S1	24	4	
5	-00	-S6	11	-00	-S1	71	20	-001	-S1	31					5	
6	-00	-S43	12	-00	-S1	72	20	-001	-S1	32					6	
7	-00	-S24	11	-00	-S1	83	20	-001	-S1		33	-001	-S1	33	7	
8	-00	-S24	12	-00	-S1	84	20	-001	-S1		34	-001	-S1	34	8	
9	-00	-S24	14	-00	-S1	91	20	-00	-S1	103					9	
10	-00	-S41	11	-00	-S1	92	20	-00	-S1	104					10	
11	-00	-S1	230	-001	-S1	41	21	-00	-S1	111	43	-001	-S1	43	11	
12	-00	-S1	11	-001	-S1	42	21	-00	-S1	112	44	-001	-S1	44	12	
13	-00	-S1	12	-00	-S42	11	21	-00	-S1						13	
14	-00	-S1	24	-00	-S42	14	21	-00	-S1						14	
15	-00	-S1	31	-00	-S25	11	21	-001	-S1	11					15	
16	-00	-S1	32	-00	-S25	14	21	-001	-S1	12					16	
+															+	

Subject to technical modifications
Copyright as per DIN 34 to be observed!

07.12.2005
H0145NE
H09+S3
ADAM

03	AS BUILT	5.12.2005	AD	Date	06.06.2005	US STEEL KOSICE/SLOVAKIA	AREVA	PLUS DIAGRAM	50.3023.01-A4-7+1403	V	-L09	/S01
02	FACT.-REV.	30.10.2005	BL	Drawn	HahnTicke	50.3023.01		CIRCUIT-BREAKER			+S3	/S01
01	Approval	30.06.2005	Hae	Check	Grohmann	SUBSTATION T81		PANEL				Sheet 60
NO.	Alteration	Date	Name	Sld.	Iss.	for	Iss.	by:	INGOMING FEEDER	D009781.01.609-3. AHA		60Sh.