

6. ACCESSORIES

Bushing for Winding:

Type:	CONNEX-Plug-in Socket
Outline Drawing:	827 158 001

Earthing :

Type:	DIN 48088 - M 12
Outline Drawing:	5.9.40.75-203636

Oil Draining Device :

Type:	DIN 42551 – A22
Outline Drawing:	2.1.60.11-202661

Thermometer pocket:

Type:	DIN 42554
Outline Drawing:	5.9.42.80-202021

CONNEX-Trafo-Anschlusssteile, gerade, bis 24 kV CONNEX Transformer Bushings, Straight up to 24 kV

Der Einbau der Trafoanschlusssteile erfolgt anstelle der DIN-Porzellandurchführungen auf der Mittelspannungsseite.

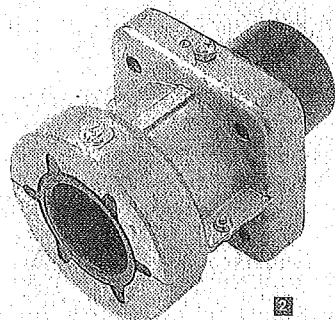
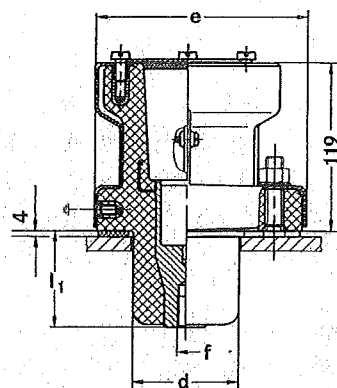
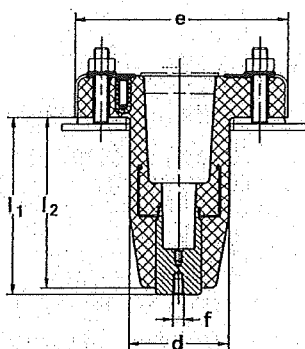
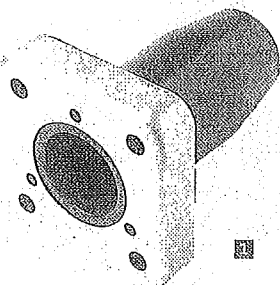
Um der Beschaffenheit des Transformators Rechnung zu tragen, ist das in den Traforaum hineinragende Isolierteil (Maß l_1 und l_2) in verschiedenen Längen lieferbar. Die Kabel werden mit metallgekapselften CONNEX-Kabelanschlusssteilen angeschlossen.

Auf der 0,4 kV Seite stehen entsprechende Isolierhauben zur Verfügung, die einen vollkommenen Berührungsschutz bieten.

These transformer bushings are installed on the medium-voltage side in the place of DIN porcelain bushings.

To fit different transformer designs, the insulating part projecting into the transformer (dimension l_1 and l_2) is available in various lengths. The cables are connected with metal-enclosed CONNEX separable connectors.

For the 0.4 kV side, respective insulating covers are available providing complete protection against electric shock hazard.



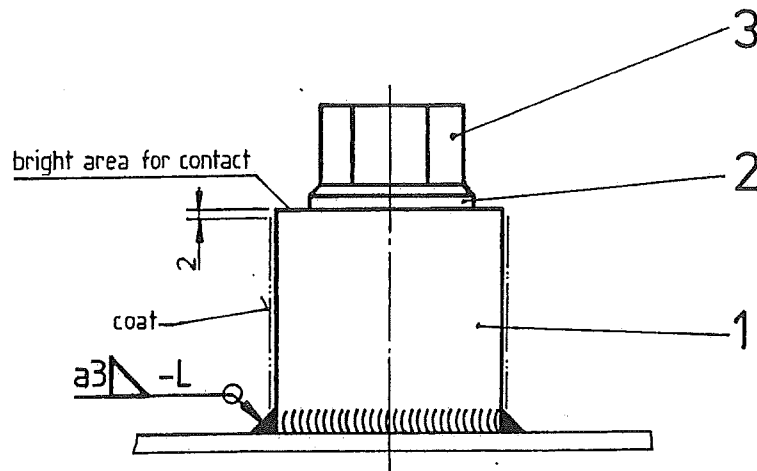
Nr.	Größe	Maße mm					Anschluß- Gewinde	Nenn- Strom
No.	Size	Dimensions mm					Threaded Connection	Nominal Current
		l_1	l_2	d	e	f		I _N /A
827 115 004	0	133	128	74	127	□	M8	250
827 115 002	0	178	173	77	127	□	M8	250
827 158 001	0	68	-	75	130	□	M12	250
827 159 001	1	68	-	75	130	□	M12	630

Earthing total (without Pos. 1)

STARKSTROM-GERÄTEBAU
GMBH
REGENSBURG

Company standard

This drawing remains our property.
The original or copies of this drawing are not allowed to
be revealed to third parties without our written consent.

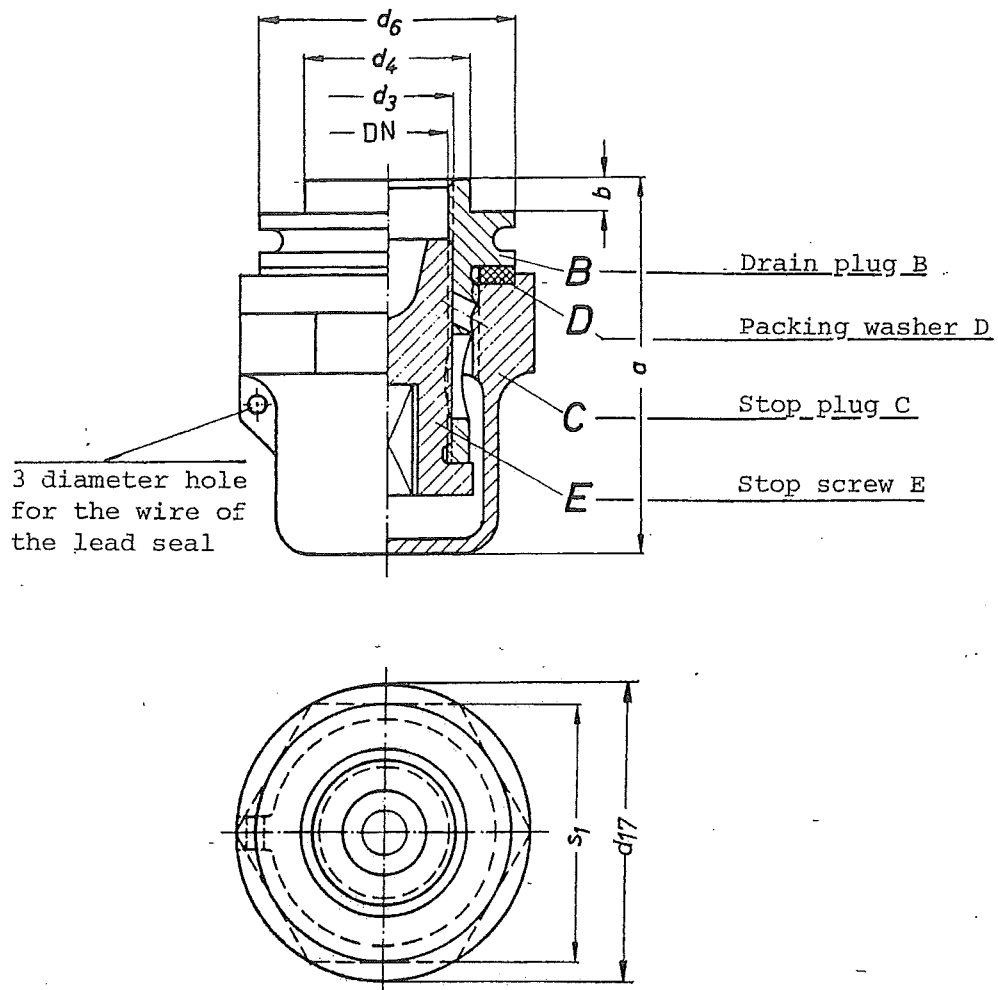


Part-No.	Denomination	Dimensions		Weight
		L		kg
YM205753	M6	50		0,005
YM212159	M10	95		0,028
YM203636	M12	95		0,040

KT	
A	
BA	
F	
G	
K	
NRM	●
S	
T	
	●
SBG	
AMSGB	●

General tolerances acc.			Date	Name	Company standard No.: 5.9.40.75-YM	Sheet	A
ISO 2768-c	DIN 8570-B	Exec.	27.07.1995	<i>[Signature]</i>		1	
Quality level group: DIN EN 25817-C		Verified		<i>[Signature]</i>	Repl.:	1 Sheets	4
Surface acc. DIN ISO 1302		Standard				Repl. by:	

This drawing remains our property.
The original or copies of this drawing are not allowed to
be revealed to third parties without our written consent.



Distributor

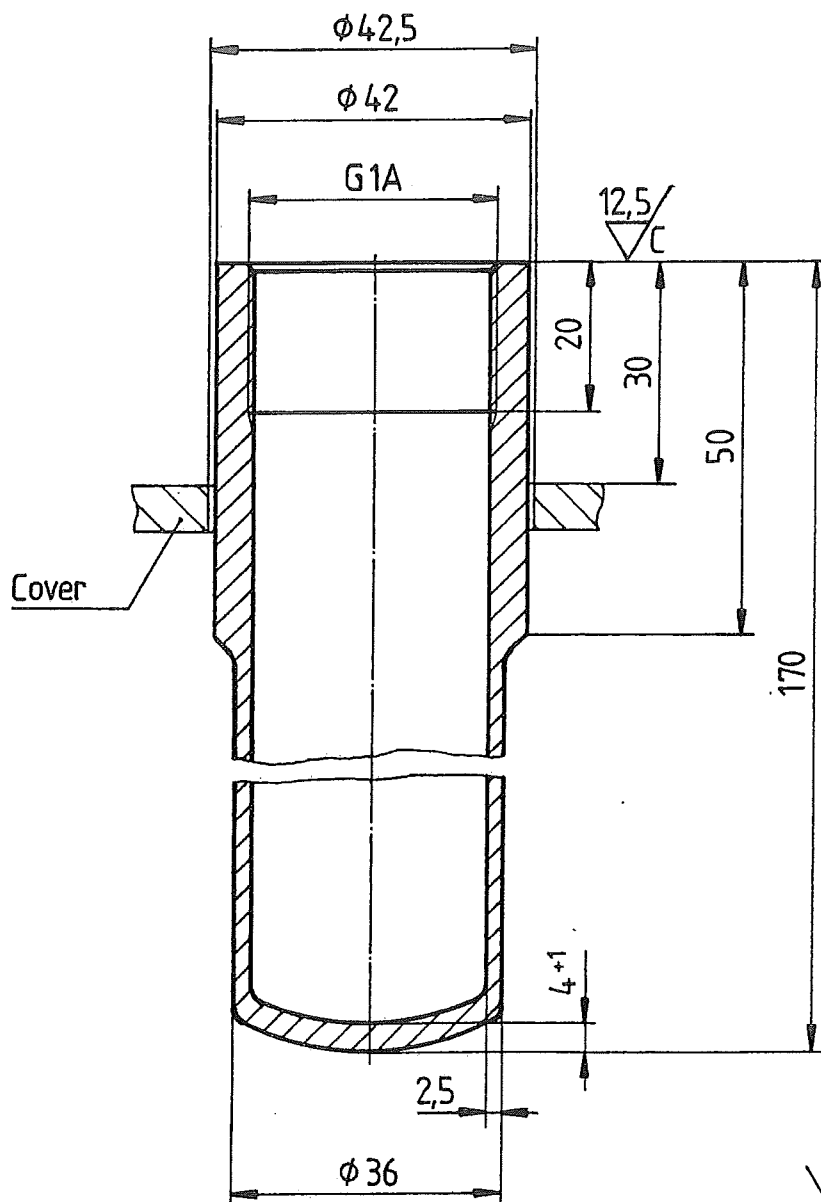
KT	
A	
BA	●
F	
G	
K	
NRM	●
S	
T	●
SBG	
AMSGB	●

Part-No.	Nominal width DN	Dimensions						for transformers	Weight kg
		a	b	thread type d3	d4	d6=s1	d17		
M202661	A22	67	6	M24×1,5	30	46	53	up to 800 kVA	0,560
M202662	A31	93	10	M33×1,5	40	65	75	above 800 to 1600 kVA	1,290
M202663	A40	112	10	M42×1,5	52	80	92	above 1600 kVA	2,250

The oil draining device remains tight even if the oil temperature rises to 100°C.

General tolerances acc.		Date	Name	Company standard No.:	Sheet	A
ISO 2768-c	DIN 8570-B				1	
Quality level group: DIN EN 25817-C		15.09.1995	Kier	2.1.60.11-M	1 Sheets	4
Surface acc. DIN ISO 1302						
Stand. check				Subst. for:	Subst. by:	

This drawing remains our property.
The original or copies of this drawing are not allowed to
be revealed to third parties without our written consent.



Run-out of thread and facing acc. to DIN 76

Finish: produced with the deep-draw process

Weight: 0,525 kg

KT	
A	
BA	●
F	
G	
K	
NRM	●
S	
T	●
SBG	
AMSG	●

General tolerances acc.			Date	Name	Company standard No.:	Sheet	A
ISO 2768-c	DIN 8570-B	Exec.	26.07.1995	<i>Jul</i>		1	
Quality level group: DIN EN 25817-C		Verified		<i>A</i>	5.9.42.80-M202021	1 Sheets	4
Surface acc. DIN ISO 1302		Standard				Repl.:	