

A

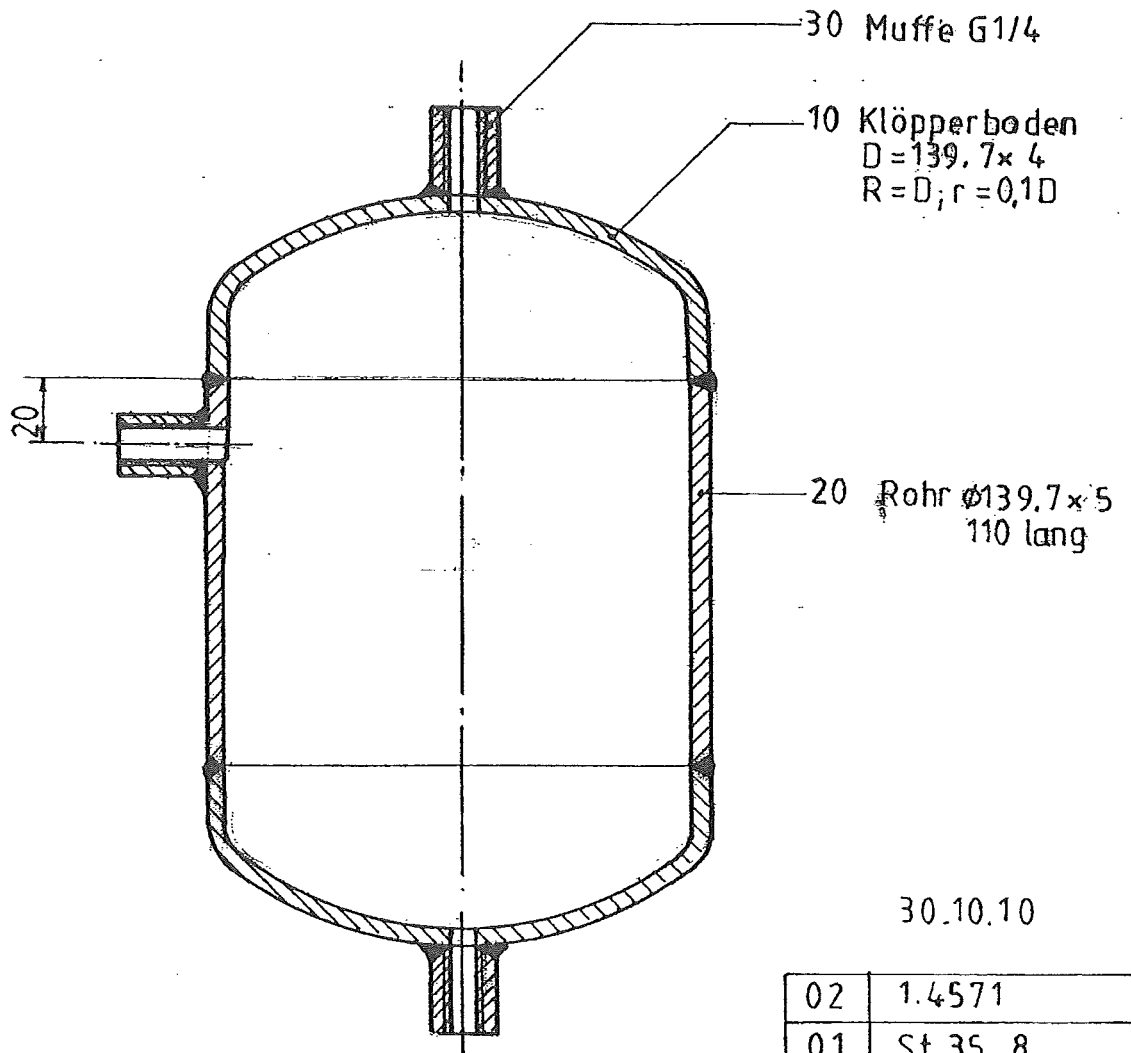
B

C

D


E

F



30.10.10

|    |           |
|----|-----------|
| 02 | 1.4571    |
| 01 | St 35.8   |
| UP | Werkstoff |

|   |  |                      |        |                |                |                 |   |
|---|--|----------------------|--------|----------------|----------------|-----------------|---|
| Zust.   |  | Änderung             |        |                | Tag            | Name gezeichnet | Name geprüft  |
| Maßstab<br>1/2                                  | Vervielfältigungs- und Eigentumsrecht vorbehalten. Diese Zeichnung darf ohne unsere Genehmigung weder dritten Personen noch Konkurrenzfirmen weitergegeben werden. | '02                  | Datum  | Name           | Korn.          |                 |   |
|   |  | Gezeichnet           | 11.10. | JS             |                |                 |   |
|   |  | Geprüft              | 11.10. | JS             |                |                 |   |
|   |  | Normgeprüft          |        |                |                |                 |   |
| Allgemein-Toleranzen nach DIN ISO 2768 T1m, T2K |  | KÜHME Armaturen GmbH |        |                |                |                 |  |
|   |  |                      |        |                |                |                 |   |
| Druckluftspeicher                               |  |                      |        |                | Zeichnungs-Nr. |                 | Rev.  |
|   |  |                      |        |                | 003.1730.00.04 |                 |   |
| Ersatz für:                                     |  |                      |        | Ersetzt durch: |                |                 |   |

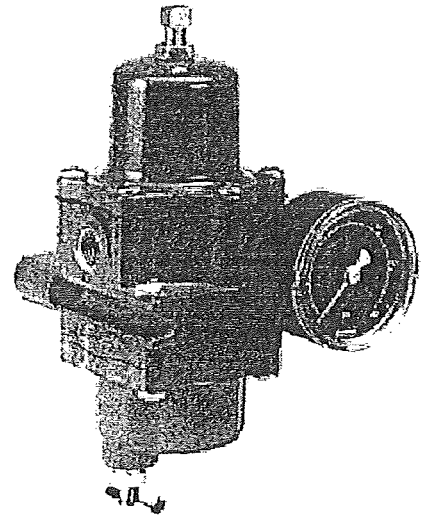
# Filter Regulator

67 CFR DN 1/4"

FISHER



|                           |  |
|---------------------------|--|
| <b>Connection:</b>        | female B.S.P. thread G 1/4   |
| <b>Mounting position:</b> | vertical mounting, drain screw upside down   |
| <b>Inlet pressure::</b>   | max. 17,2 bar g  |
| <b>Outlet pressure:</b>   | 0 to 8,6 bar   |
| <b>Mesh:</b>              | 40 µm  |
| <b>Temperature range:</b> | -40 °C bis +82 °C  |
| <b>K<sub>vs</sub></b>     | 0,31   |
| <b>Material:</b>          | Body and spring cover – Aluminium<br>Body seal – Nitrilkautschuk (NBR)<br>Inner parts – brass / stainless steel<br>Membrane – Nitril<br>Mesh – Zellulose |



**Weight:** 0.5 kg

## Product Description

The 67CF Series direct-operated regulators are equipped with a filter for removing particles from the supply gas. They are typically used to provide constantly controlled, reduced pressures to pneumatic and electropneumatic controllers and other instruments. These are suitable for most air or gas applications. Other applications include providing reduced pressures to air chucks, air jets, and spray guns.

The Type 67CFR regulator has an integral low-capacity internal relief valve. A downstream pressure increase above the outlet pressure setting moves the diaphragm assembly off the soft seat, venting the excess pressure through a hole or vent in the spring case.

## Outlet Pressure Ranges

### Type 67CFR Internal Relief Performance

Low capacity for minor seat leakage only; other overpressure protection must be provided if inlet pressure can exceed the maximum pressure rating of downstream equipment or exceeds maximum outlet pressure rating of the Type 67CFR.

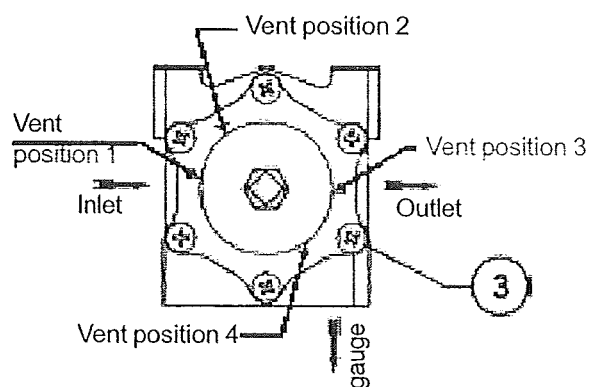
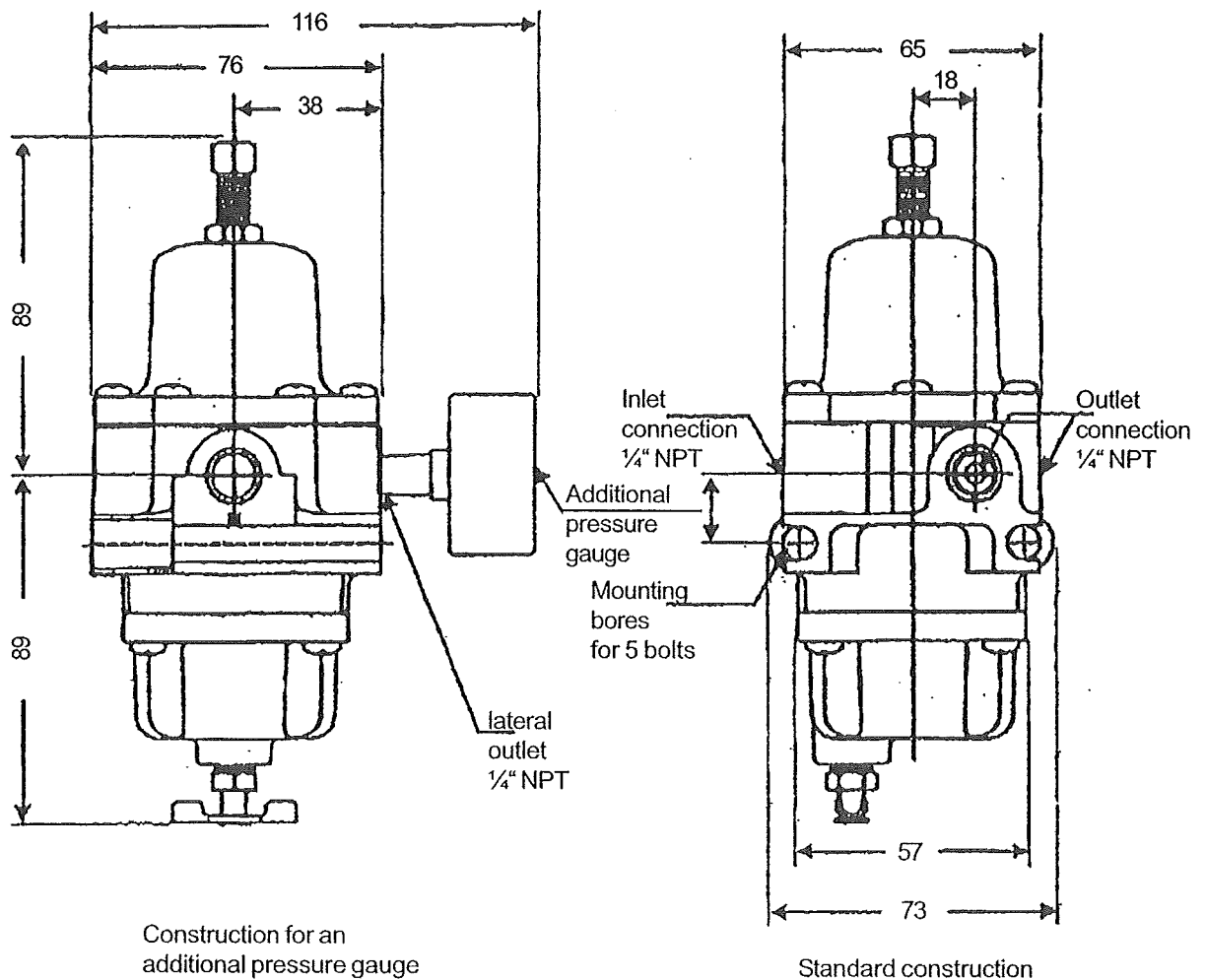
906.0005.01.00.04E02.11



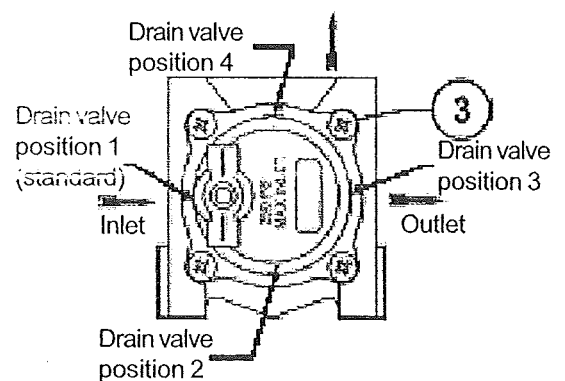
# Filter Regulator

67 CFR DN 1/4"

FISHER



Spring case vent position



Drain valve position

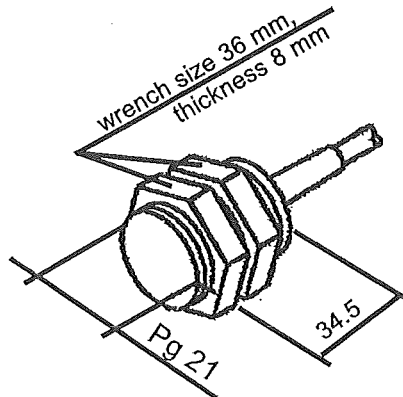
906.0005.01.00.04E02.11



# Inductive limit switch

PEPPERL+FUCHS

NJ6-22-SN-G

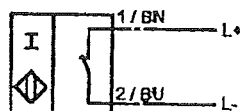


Operating dist.  $s_n$ , mounting 6 mm, embeddable

|                             |           |               |
|-----------------------------|-----------|---------------|
| Reduction factor            | $r_{V2A}$ | 0.85          |
|                             | $r_{Al}$  | 0.4           |
|                             | $r_{Cu}$  | 0.3           |
| Assured operat. dist. $s_a$ |           | 0 ... 4.86 mm |
| Nominal voltage             |           | 8 V DC        |
| Current consumption         |           |               |
| Sensing face covered        |           | 1 mA          |
| Sensing face free           |           | 3 mA          |
| Switching frequency $f$     |           | 2 kHz         |
| Self inductance $L_i$       |           | 155 $\mu$ H   |
| Self capacitance $C_i$      |           | 115 nF        |

|                         |                      |
|-------------------------|----------------------|
| EMC to                  | EN 60947-5-2         |
| In compliance with      | EN 50227             |
| Protection to IEC 60529 | IP 68                |
| Operating temperature   | -40 ... 100 °C       |
| Connection              | 2 m, silicon cable   |
| Conductor cross section | 0.75 mm <sup>2</sup> |
| Housing material        | High grade steel     |
| Sensing face            | PBT                  |

Standard symbol / connection



908.0009.01.03.04E19.06



# 5/2-way solenoid valve

9710535.0763

G 1/4

NORGREN-HERION



- ♦ 5/2-way solenoid valve G 1/4 for filtered, oiled or pressure air free of oil
- ♦ elektromagnetic actuation, indirect solenoid operated valve
- ♦ Internal thread G 1/4"

## Description

Temperature min.: -25 °C  
Temperature max.: +55 °C  
Temperature of flow: +60 °C  
Mounting position: optional  
Material  
Body: hard anodized aluminium/stainless steel  
Seal: AU / NBR

## Features

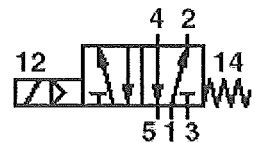
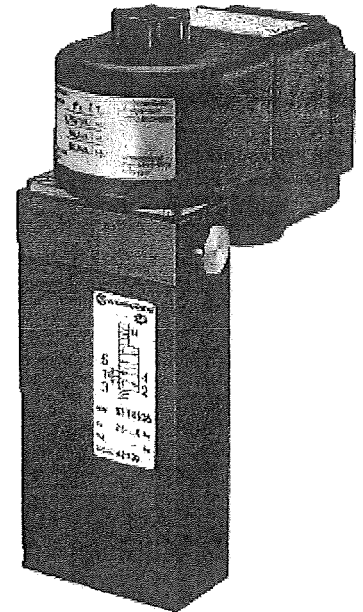
- ♦ High flow rate
- ♦ Crossover-free switching
- ♦ Safety function in the event of power failure provided by mechanical return spring

## Characteristic data

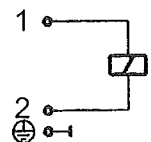
Operating pressure: min. 0 bar  
max. 8 bar  
Flow: 1300 l/h  
Control air supply: 2.5 to 8 bar  
Weight: 0.7 kg

## Solenoid

Voltage: 24 V DC  
Rated current: 78 mA  
Designed to VDE 0580  
Power consumption: 1.9 W  
Protection class (to DIN 40050): IP 65  
Weight: 0.3 kg

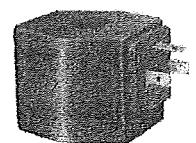
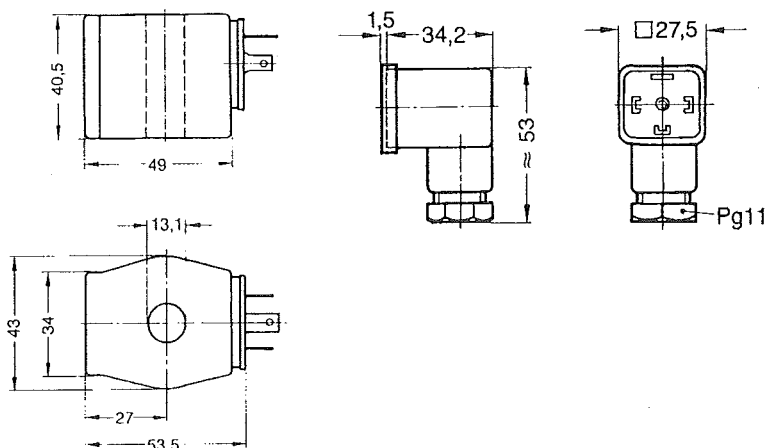


External control pressure supply

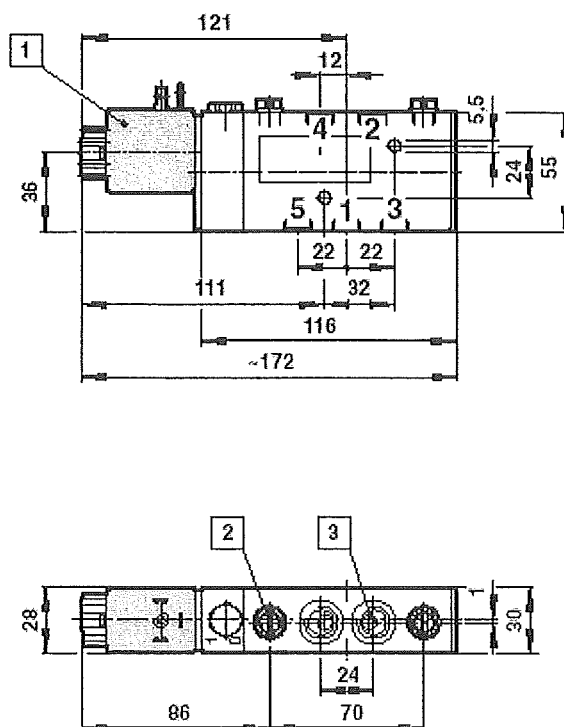


Electrical circuit diagram

912.0027.01.00.04E05.08



### Dimensional Drawing



- 1 Magnetspule Abmessungen siehe Seite 8
- 2 Externer Steuerluftanschluss G1/8
- 3 Arbeitsanschlüsse G1/4, G1/2 oder 1/4 NPT, 1/2 NPT
- 4 Elektrischer Anschluss in den Ausführungen 003, 004, oder 005 wählbar
- 5 Vorsteuerung um 180° drehbar

912.0027.01.00.04E05.08

# Needle Valve

## Type 110

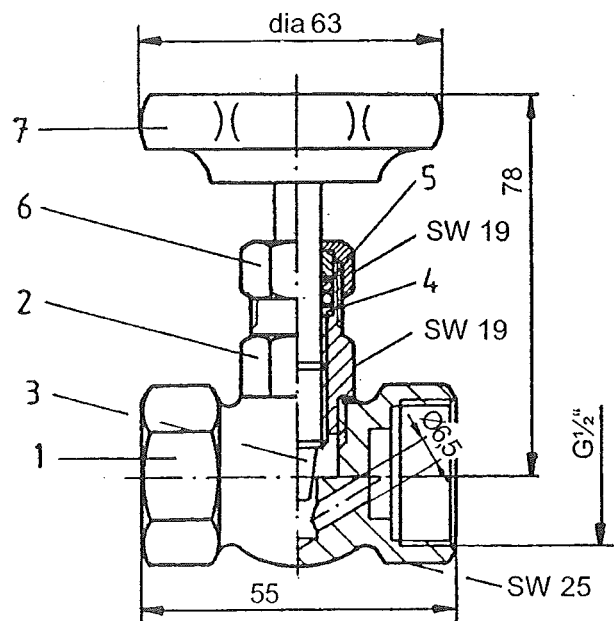
ARNDT



### Technical Data

Valve connection: double-sided bush  
Thread: G 1/2"  
Withworth-pipe thread DIN 259  
Nominal pressure: 100 bar  
Operating temperature: up to 100 °C

| Item              | Material         |
|-------------------|------------------|
| 1 Body            | CuZn39Pb3F37     |
| 2 Head            | Ms 58            |
| 3 Spindle         | Ms 58            |
| 4 Gland-ring      | Ms 58            |
| 5 Spindle-sealing | Teflon           |
| 6 Gland-nut       | Ms 58            |
| 7 Handwheel       | Moulded material |



904.0001.00.00.04E08.02



# Non-return valve

END Armaturen

MR330021

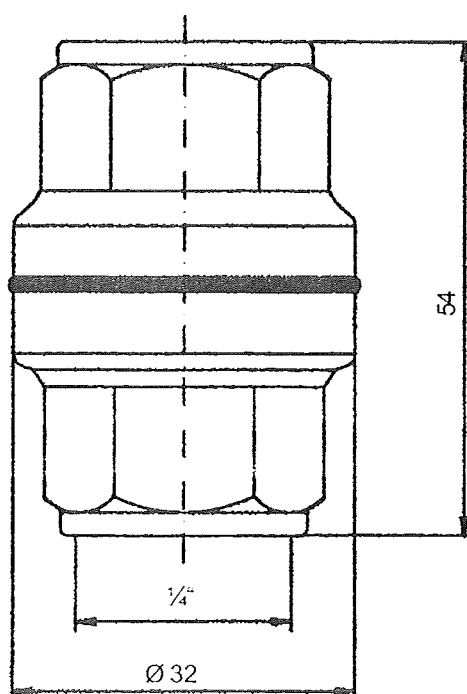
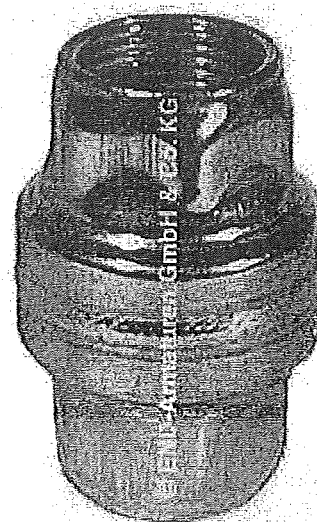
1/4"



|                   |   |
|-------------------|---|
| Connection        | Female B.S.P. thread G 1/4"   |
| Temperature       | -20 °C to +150 °C   |
| Pressure range    | max. PN 16  |
| Mounting position | As desired, preferably for horizontal or vertical mounting. Please refer to flow direction. |
| Weight            | 0.125 kg  |

## Material

|            |                        |
|------------|------------------------|
| Body       | Stainless steel 1.4301 |
| Spring     | Stainless steel 1.4310 |
| Valve disc | Stainless steel 1.4301 |
| Seals      | FKM                    |



916.0021.01.00.04E11.02





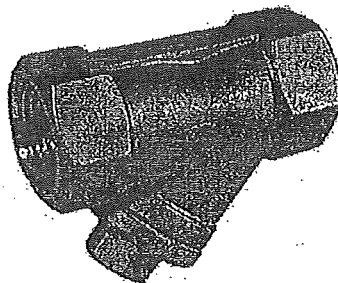
**Strainer**

**Type 60-1ES**

**PN 40**

**G 1/4**

**RIEGLER**

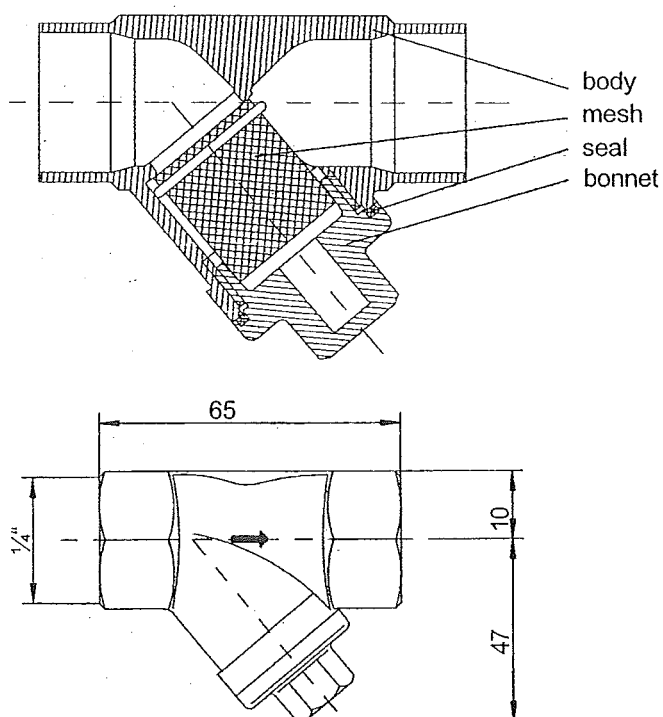


**Specification:**

- strainer with mesh which can be exchanged
- pressure range max. PN 40
- fine filter out of stainless steel, mesh ca. 0.5 mm
- body and bonnet out of stainless steel 1.4408/1.4401
- seal out of PTFE
- installation length 65 mm
- body consists of two screwed parts
- female thread G1/4

**Mounting position**

- bonnet upside down, please refer to flow direction



905.0034.01.03.04E04.09



KÜHME Armaturen GmbH

+49(0)2 34-2 98 02-0 Fax +49(0)2 34-2 98 02-10

info@kuehme.de

1/1

# Ball valve

ZF311021

G 1/4

ENDArmaturen GMBH

PN 64



## Specification

### Design

- Body consists of 2 screwed parts, full cylindric bore. Face to face length according to DIN 3202 M3. Stamped to AD-approval A4.

### Operation

Rotation of the handle through 90°

### Connection

Female B.S.P. thread G 1/4, DIN 2999

### Pressure Range

Almost vacuum up to PN 64 (Up to 80 °C).

### Temperature Range

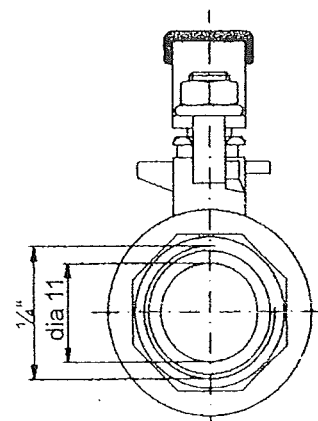
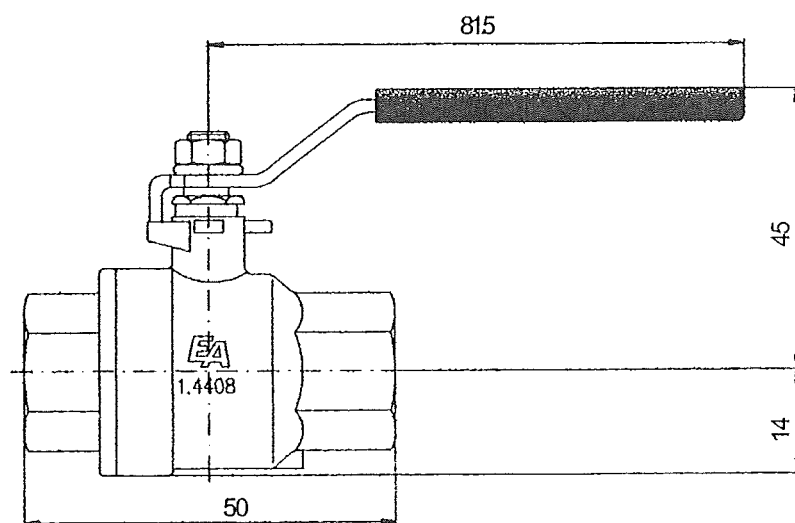
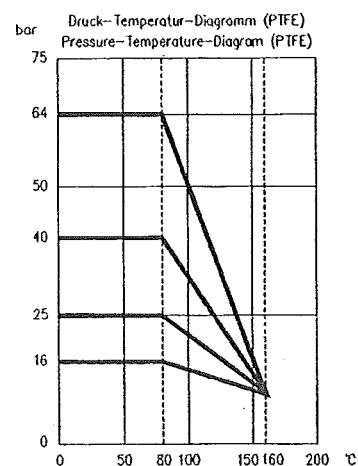
-30 °C up to max. +180 °C

### Materials

Body Stainless steel 1.4408  
Ball Stainless steel 1.4401  
Seal PTFE-glasfiber reinforced  
Handle Stainless steel 1.4301

### Weight

0.16 kg



917.0105.04.03.04E02.11



KÜHME Armaturen GmbH

+49(0)2 34-2 98 02-0

Fax +49(0)2 34-2 98 02-50

info@kuehme.de

1/1

# Non-return valve

END Armaturen

MR330021

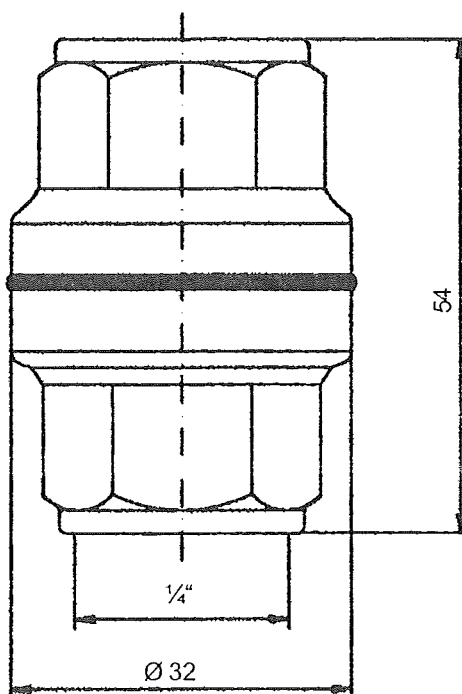
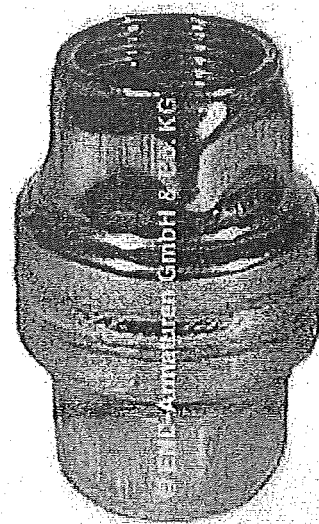
1/4"



|                   |   |
|-------------------|---|
| Connection        | Female B.S.P. thread G 1/4"   |
| Temperature       | -20 °C to +150 °C   |
| Pressure range    | max. PN 16  |
| Mounting position | At desired, preferably for horizontal or vertical mounting. Please refer to flow direction. |
| Weight            | 0.125 kg  |

## Material

|            |                        |
|------------|------------------------|
| Body       | Stainless steel 1.4301 |
| Spring     | Stainless steel 1.4310 |
| Valve disc | Stainless steel 1.4301 |
| Seals      | FKM                    |



916.0021.01.00.04E11.02



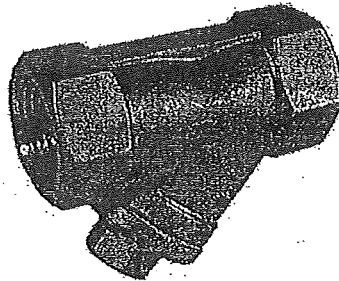
**Strainer**

**Type 60-1ES**

**PN 40**

**G 1/4**

**RIEGLER**

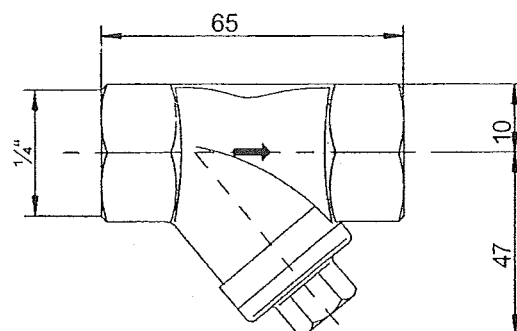
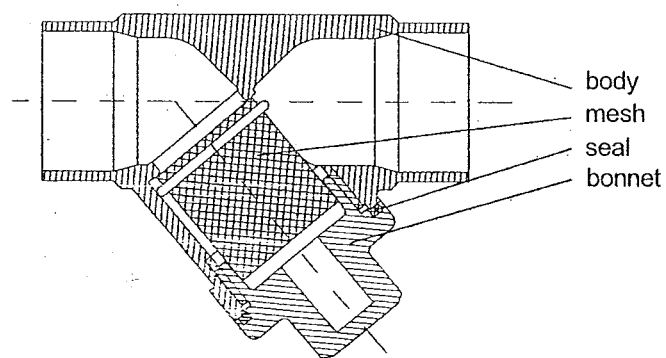


**Specification:**

- strainer with mesh which can be exchanged
- pressure range max. PN 40
- fine filter out of stainless steel, mesh ca. 0.5 mm
- body and bonnet out of stainless steel 1.4408/1.4401
- seal out of PTFE
- installation length 65 mm
- body consists of two screwed parts
- female thread G1/4

**Mounting position**

- bonnet upside down, please refer to flow direction



905.0034.01.03.04E04.09



# Ball valve

## ZF311021

## G 1/4

ENDArmaturen GMBH

## PN 64



### Specification

#### Design

- Body consists of 2 screwed parts, full cylindric bore. Face to face length according to DIN 3202 M3. Stamped to AD-approval A4.

#### Operation

Rotation of the handle through 90°

#### Connection

Female B.S.P. thread G 1/4, DIN 2999

#### Pressure Range

Almost vacuum up to PN 64 (Up to 80 °C).

#### Temperature Range

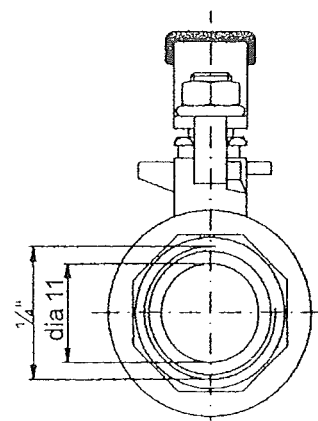
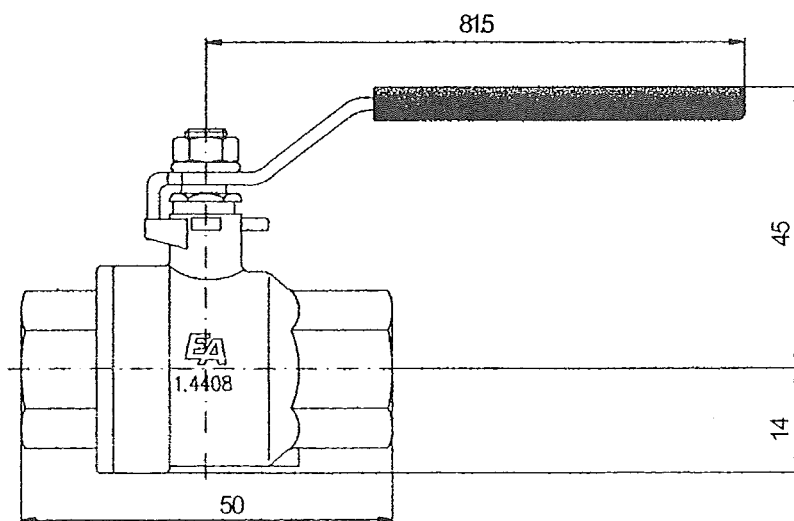
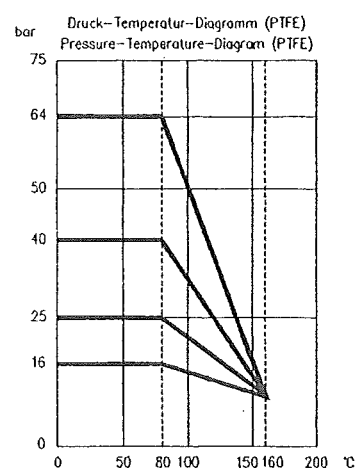
-30 °C up to max. +180 °C

#### Materials

Body Stainless steel 1.4408  
Ball Stainless steel 1.4401  
Seal PTFE-glasfiber reinforced  
Handle Stainless steel 1.4301

#### Weight

0.16 kg



917.0105.04.03.04E02.11



KÜHME Armaturen GmbH

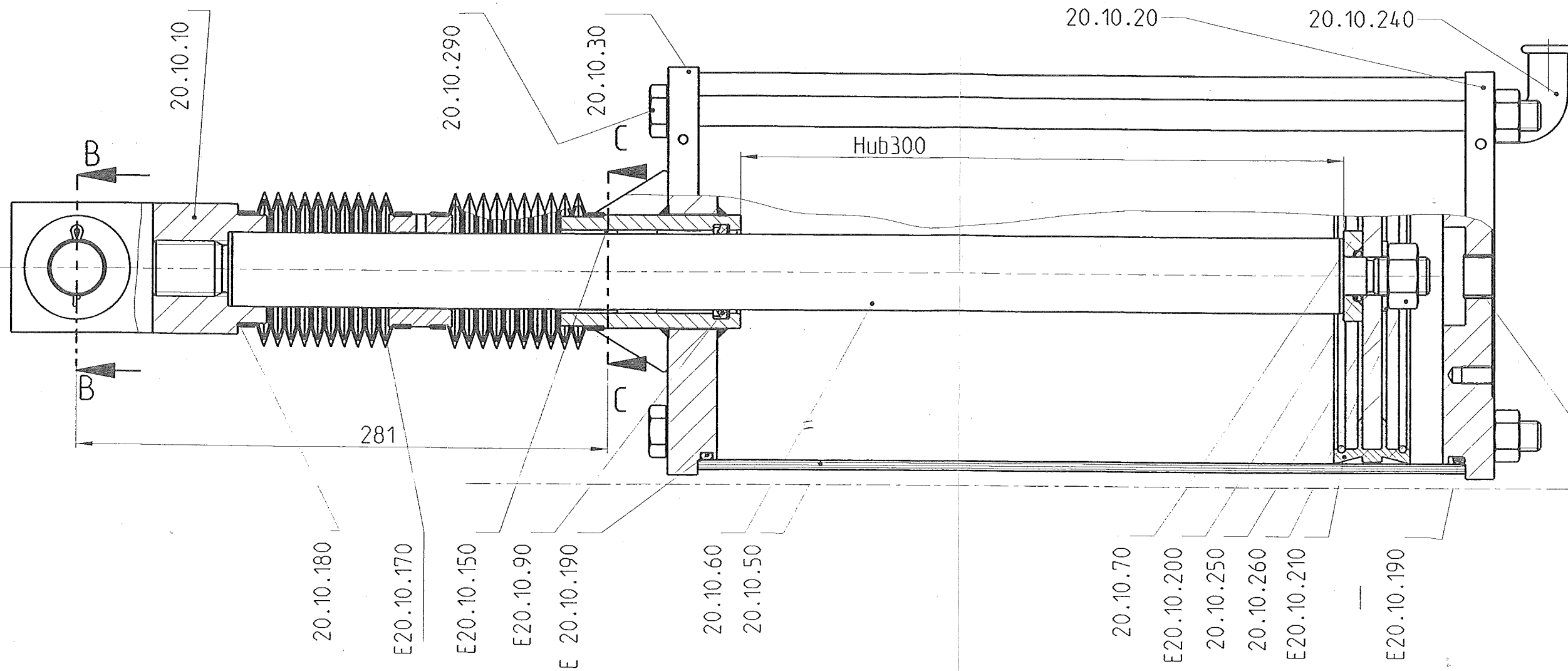
+49(0)2 34-2 98 02-0

Fax +49(0)2 34-2 98 02-50

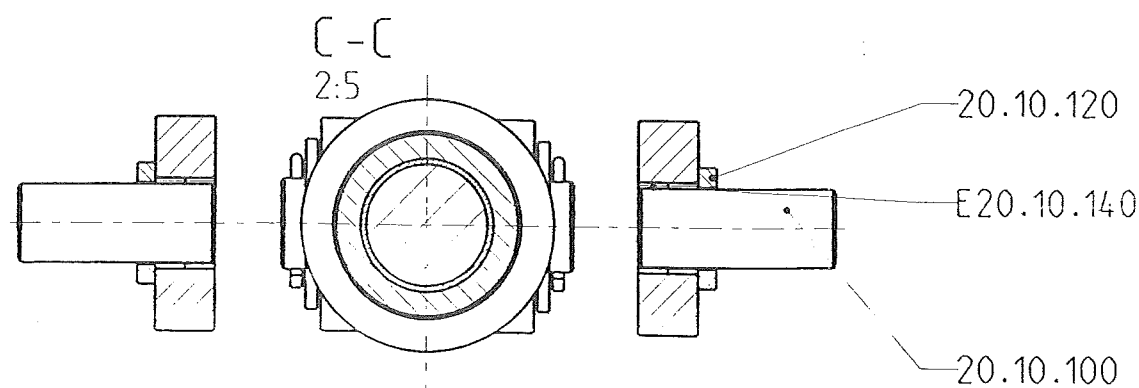
info@kuehme.de

1/1

A-A



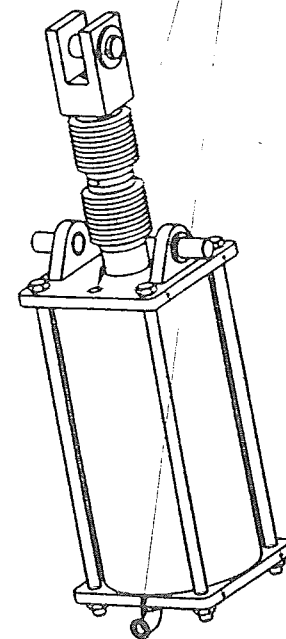
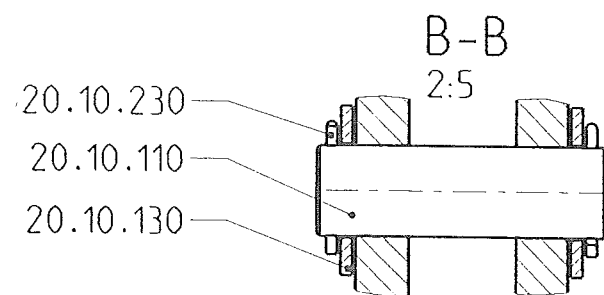
20.10.330  
Achtung! DU-Buchse wird nur beim Einsatz  
der Bremse benötigt



Entlüftung G1/2

Steueranschluß G1/2

Pos.20.10.



Gewicht: 46 kg

| Zust.  | Änderung  | Datum               | Name    |
|--|---|---------------------|---------|
| Maßstab:   | 2002  | Datum               | Name    |
| 2:5  | Vervielfältigungs und Eigentumsrecht vorbehalten. Diese Zeichnung darf ohne unsere Genehmigung weder Dritten Personen noch Konkurrenzfirmen weitergegeben werden. | 24.09               | Ischler |
| Allgemeintoleranzen nach DIN ISO 2768 T1m, T2k                   | Gezeichnet  | 24.09               | Ischler |
|  | Geprüft   | 24.09               | Ischler |
|  | Normgeprüft   |                     |         |
| KÜHME Armaturen GmbH   |   |                     |         |
| Pneum. Zylinder Ø 200/Hub 300<br>Pneumatic drive Ø200/stroke 300 |   | Zeichnungs-Nr.: CAD | Rev.    |
|  |   | 001.3700.00.03      | 0       |
| Ersatz für:  |   | File- Name:         |         |
|  |   | 00137000001CAD      |         |
| Ersetzt durch:   |   |                     |         |