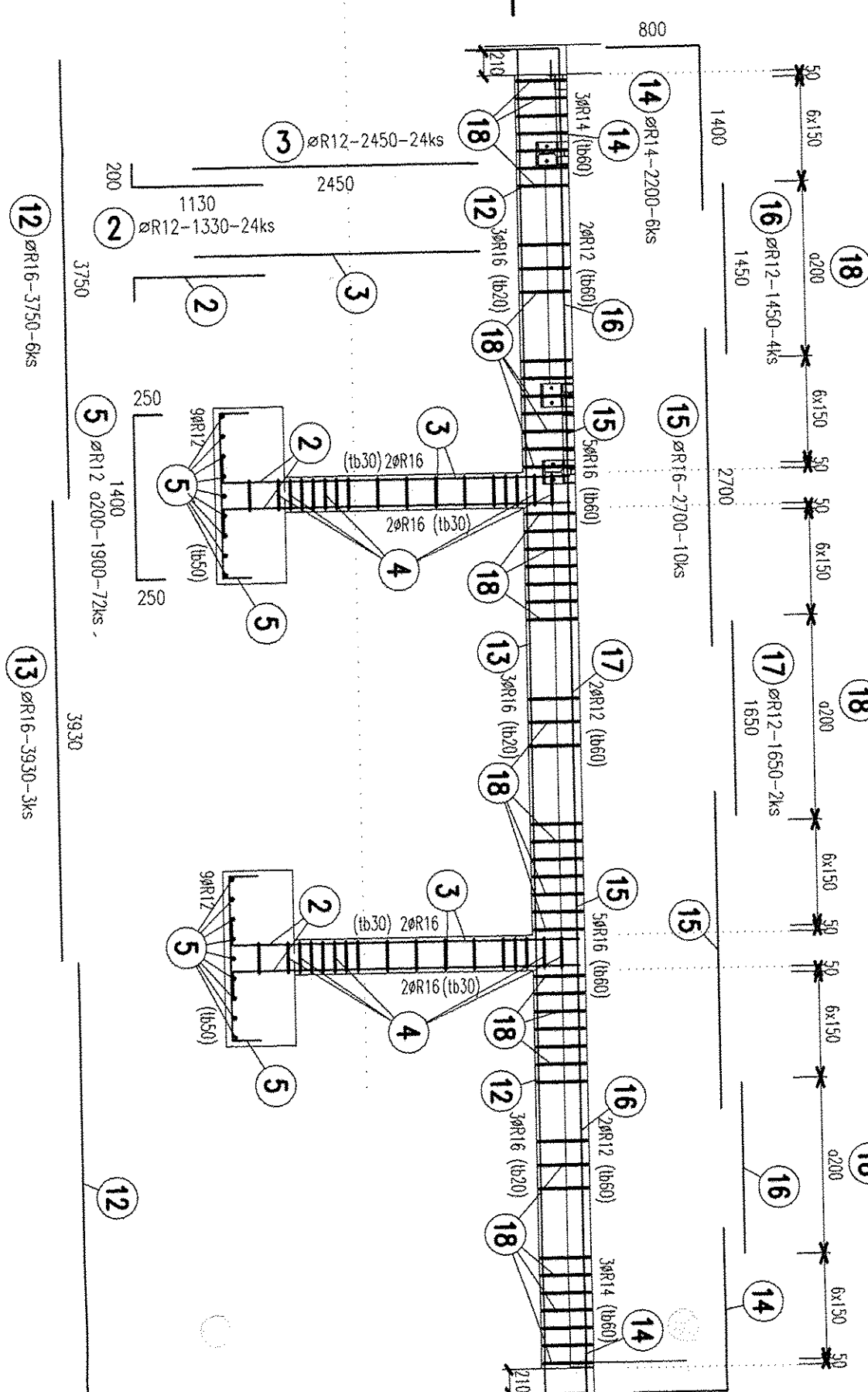
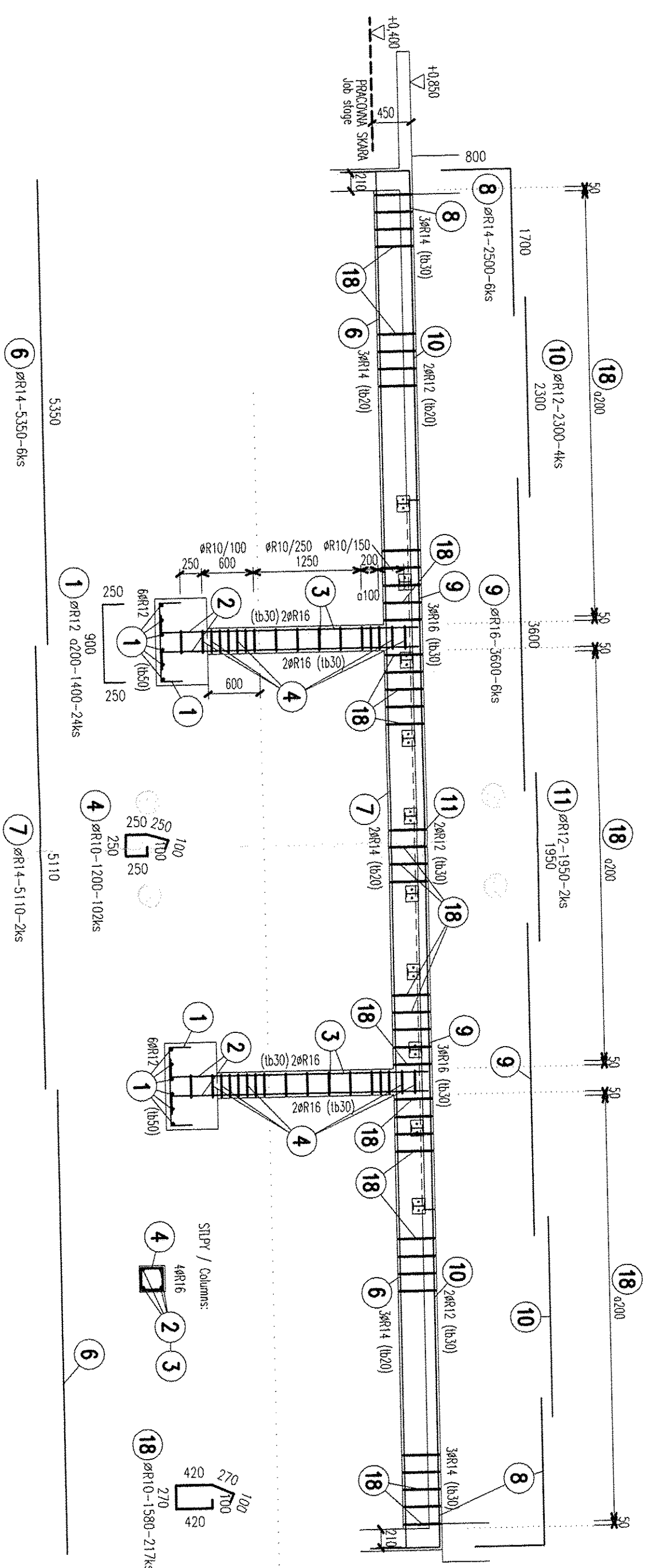


```
1x  RAM "R1"  
1:50 FRAME "R1"
```



| Cisto položky | Ocel | Premier [mm] | Dizka [m] | Pocet [ks] | Spolu [m] | | | |
|---------------|-------|--------------|-----------|------------|-----------|--------|-------|-------|
| | | | | | ØR10 | ØR12 | ØR14 | ØR16 |
| 1 | 10505 | R12 | 1,400 | 24 | | 33,60 | | |
| 2 | 10505 | R12 | 1,330 | 24 | | 31,92 | | |
| 3 | 10505 | R12 | 2,450 | 24 | | 58,80 | | |
| 4 | 10505 | R10 | 1,200 | 102 | 122,40 | | | |
| 5 | 10505 | R12 | 1,900 | 72 | | 136,80 | | |
| 6 | 10505 | R14 | 5,350 | 6 | | | 32,10 | |
| 7 | 10505 | R14 | 5,110 | 2 | | | 10,22 | |
| 8 | 10505 | R14 | 2,500 | 6 | | | 15,00 | |
| 9 | 10505 | R16 | 3,600 | 6 | | | | 21,60 |
| 10 | 10505 | R12 | 2,300 | 4 | | 9,20 | | |
| 11 | 10505 | R12 | 1,950 | 2 | | 3,90 | | |
| 12 | 10505 | R16 | 3,750 | 6 | | | | 22,50 |
| 13 | 10505 | R16 | 3,930 | 3 | | | | 11,79 |
| 14 | 10505 | R14 | 2,200 | 6 | | | 13,20 | |
| 15 | 10505 | R16 | 2,700 | 10 | | | | 27,00 |
| 16 | 10505 | R12 | 1,450 | 4 | | 5,80 | | |
| 17 | 10505 | R12 | 1,650 | 2 | | 3,30 | | |
| 18 | 10505 | R10 | 1,380 | 217 | 342,86 | | | |
| Σ | | | | | 465,26 | 283,32 | 70,52 | 82,89 |
| kg/m | | | | | 0,617 | 0,888 | 1,208 | 1,578 |
| kg | | | | | 287,1 | 251,6 | 85,2 | 130,8 |
| Σ | | | | | | 754,6 | | |

HS HSV s.r.o. KOŠICE
Technický úsek

(ib...) - krytie vystužky/ cover of reinforcement

BEIJN / concrete : 200
WSTUZ / Reinforcement: 10 505(R)

 $\pm 0,000=225,150\text{m.n.m}$

SPRACOVANÉ POD ZÁKAZKOVÝM ČÍSLOM:158/2004/SO/

REFLEX-PRO
REFLEX-PRO
spol. s r.o.

AIR LIQUIDE

Air Liquide AGS GmbH

Replaces:

Replaced by:

WSTUZ RAMOV R1; R2
Reinforcement of frames R1; R2

| |
|-----------|
| 792.87423 |
|-----------|