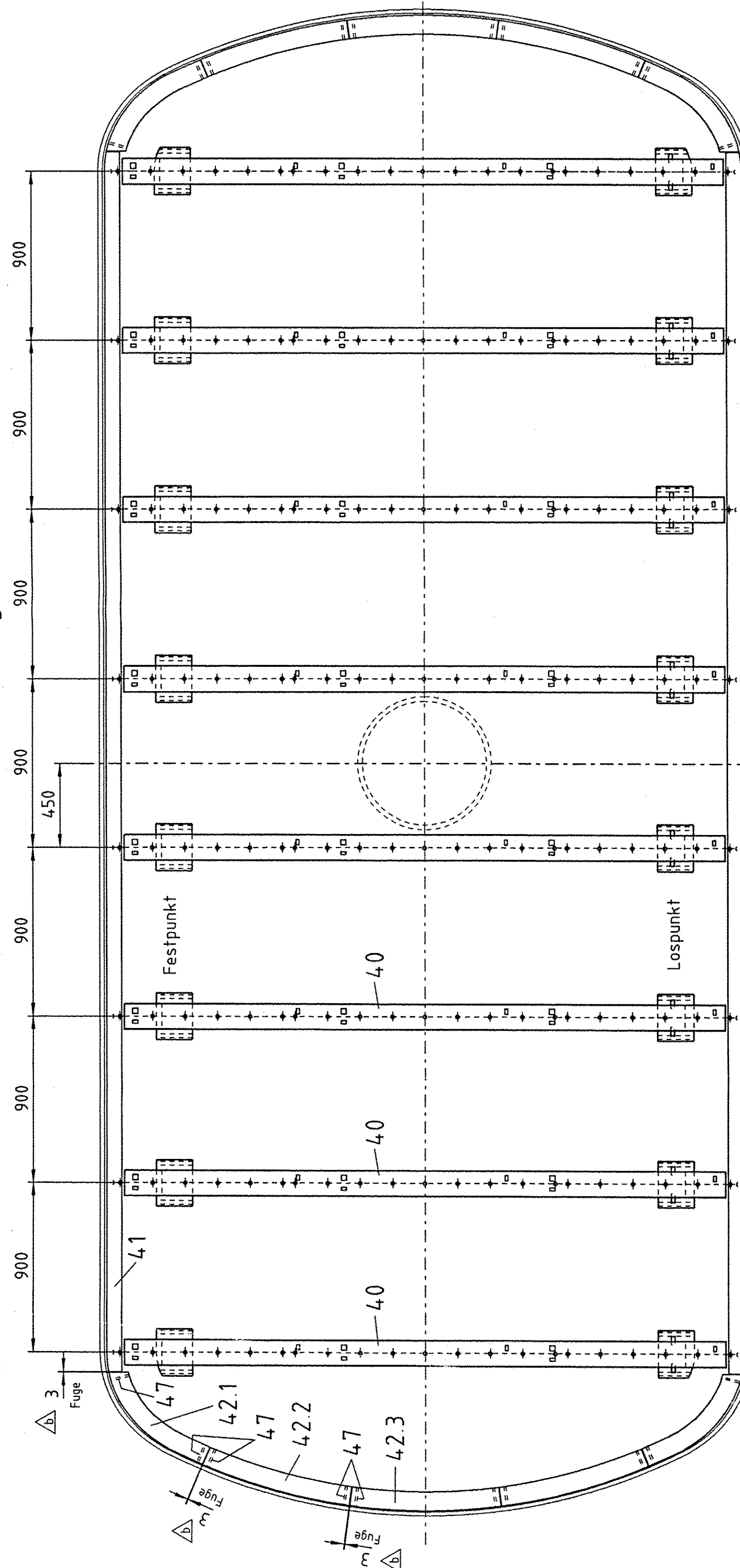
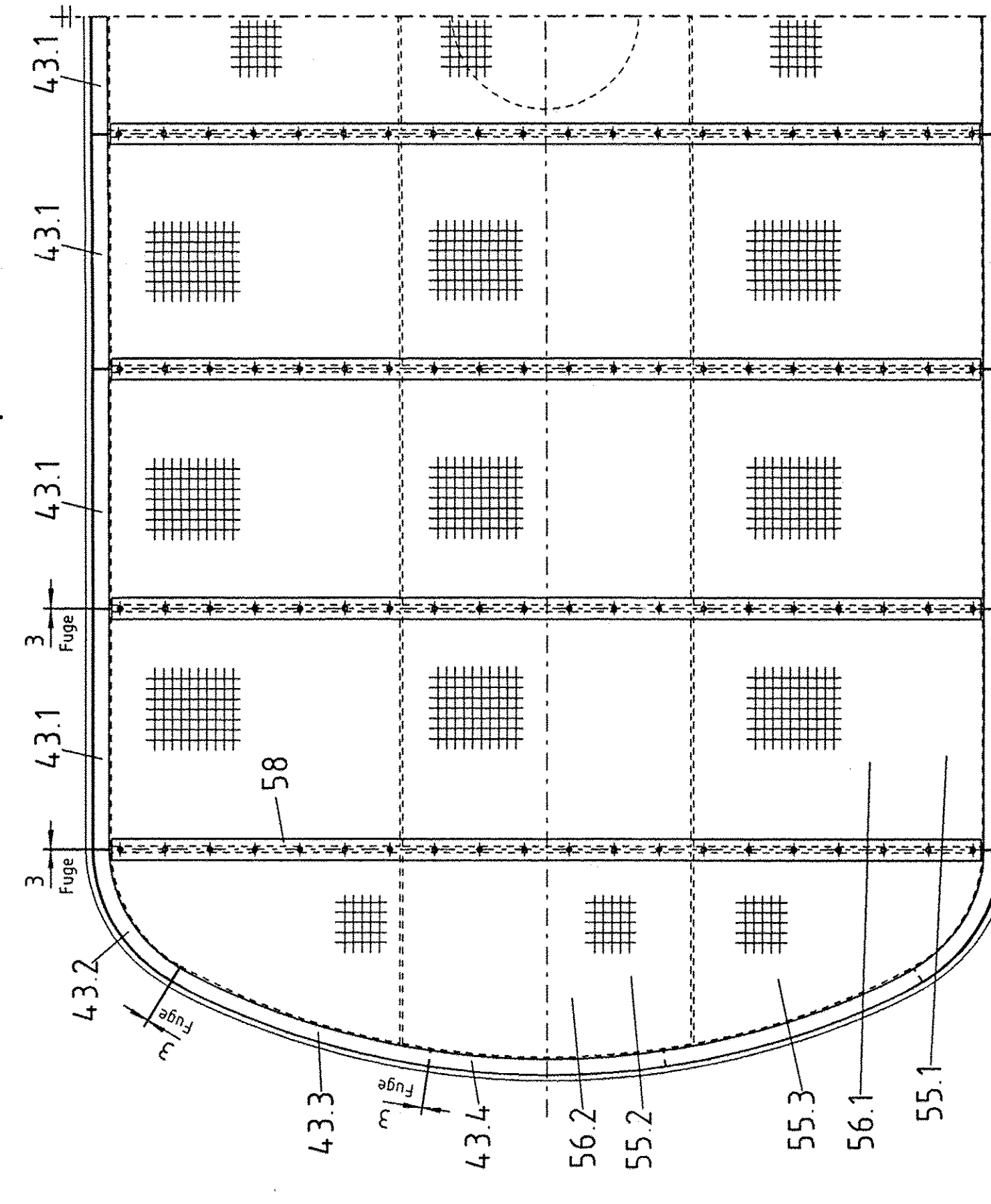


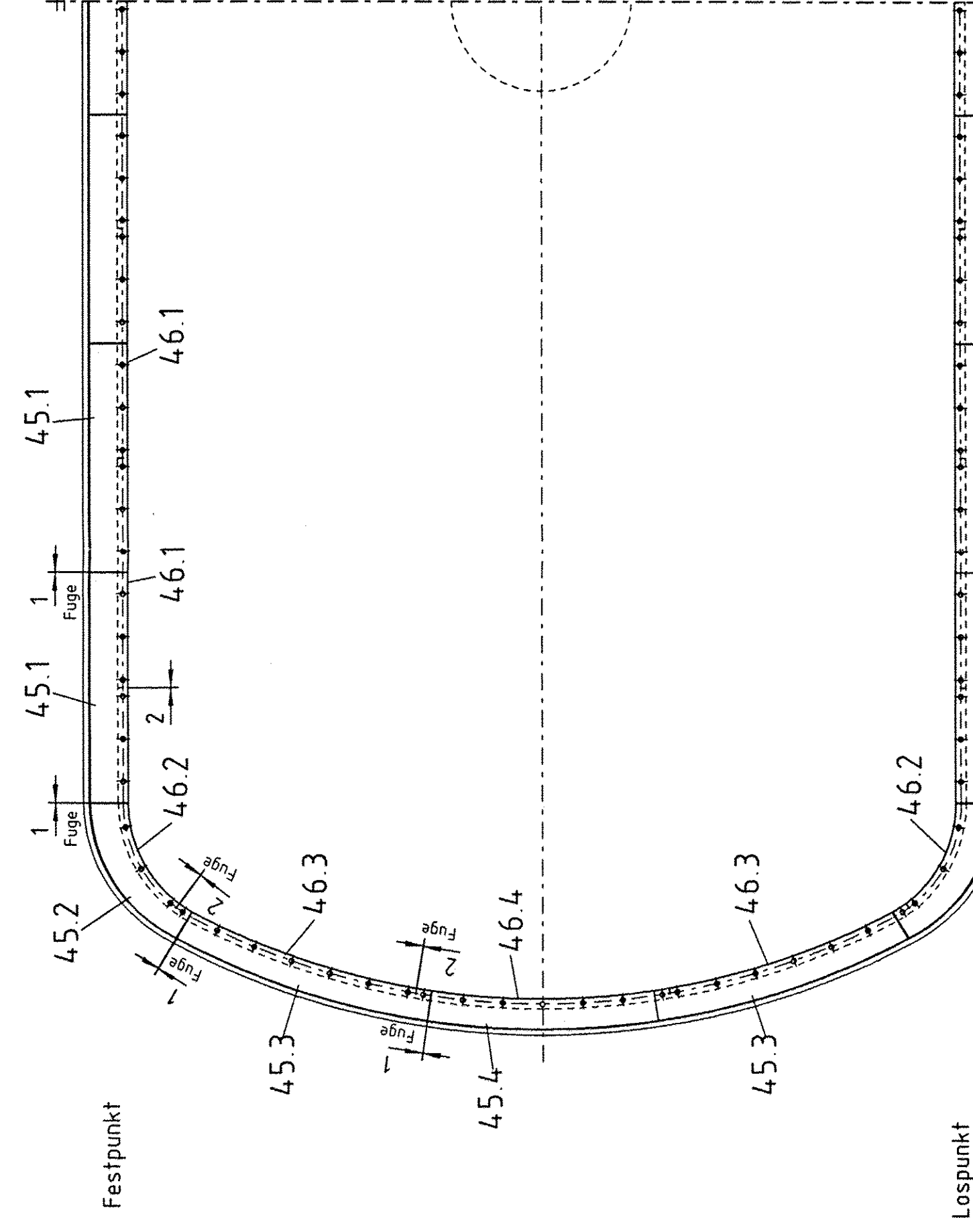
Grundriß Gitterrost – Auflage 1:20



Grundriß Leisten Pos 43.58 1:20

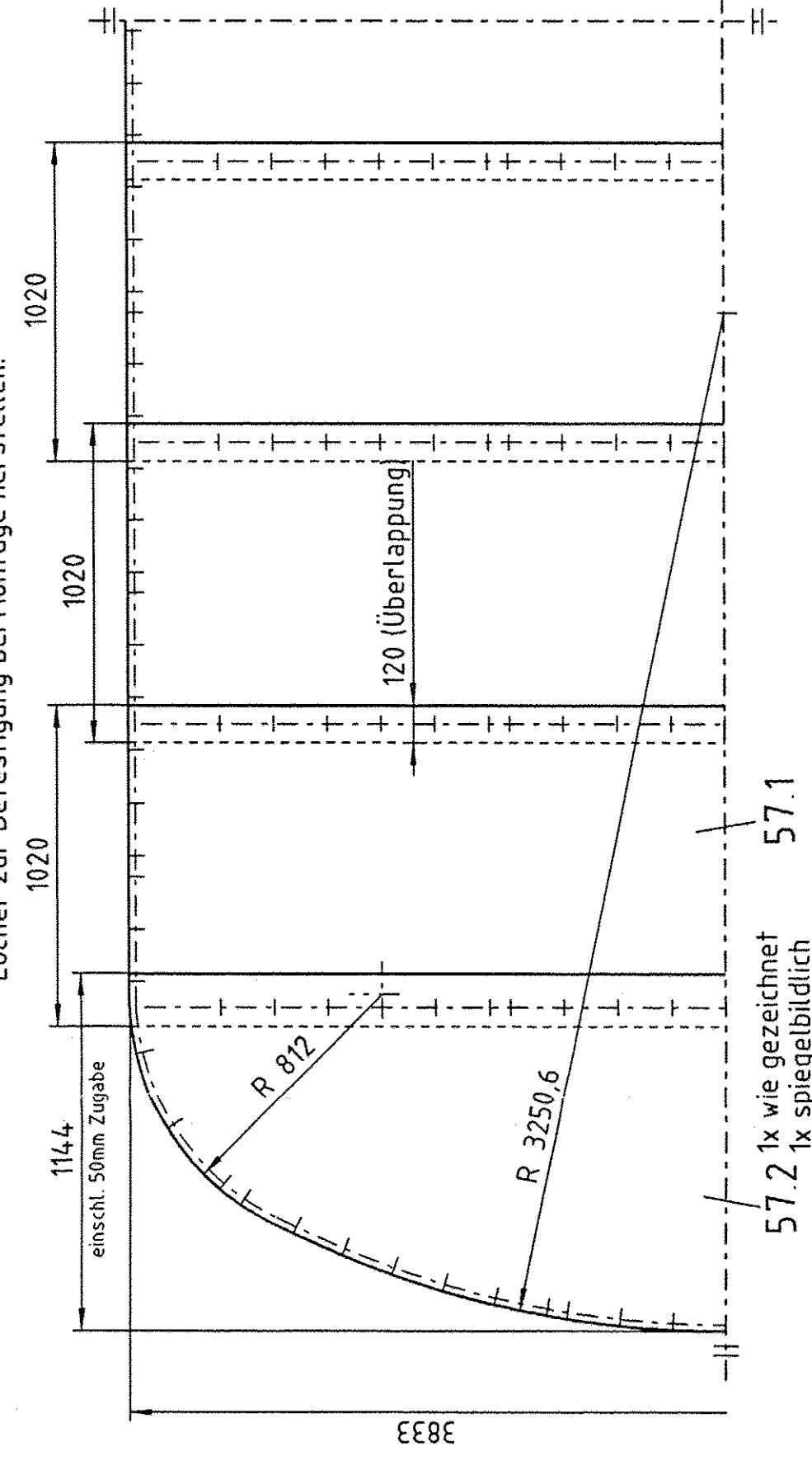


Grundriß Leisten Pos 45,46 1:20

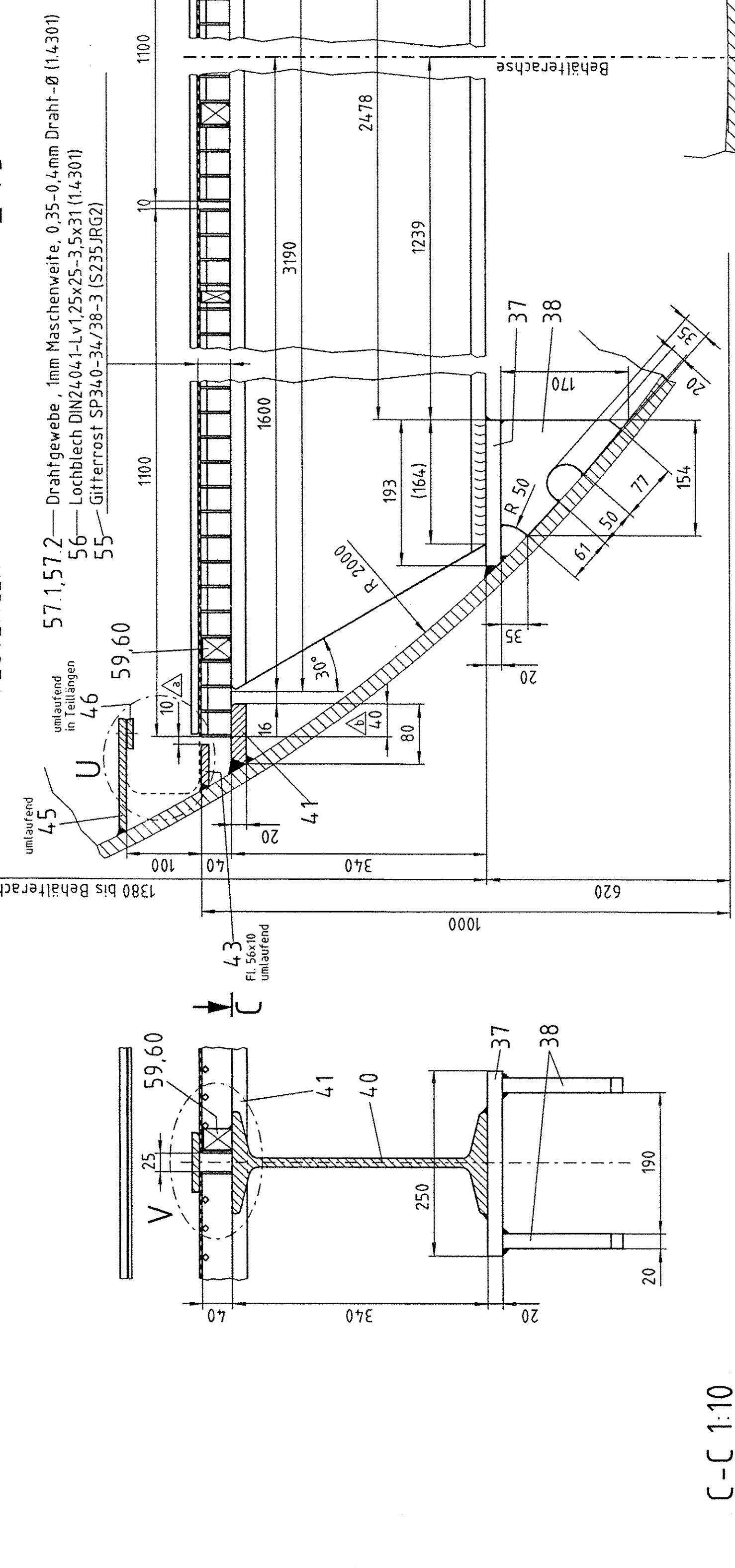


Drahtgewebe Pos 57 1:20

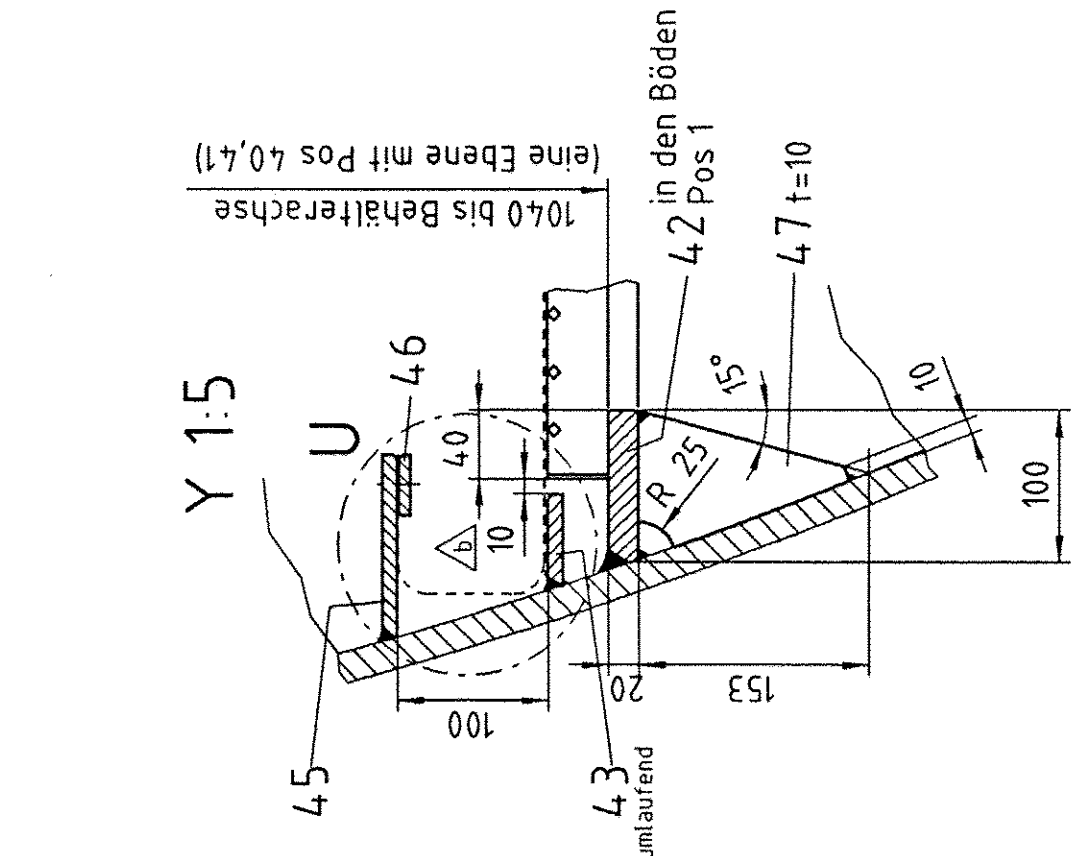
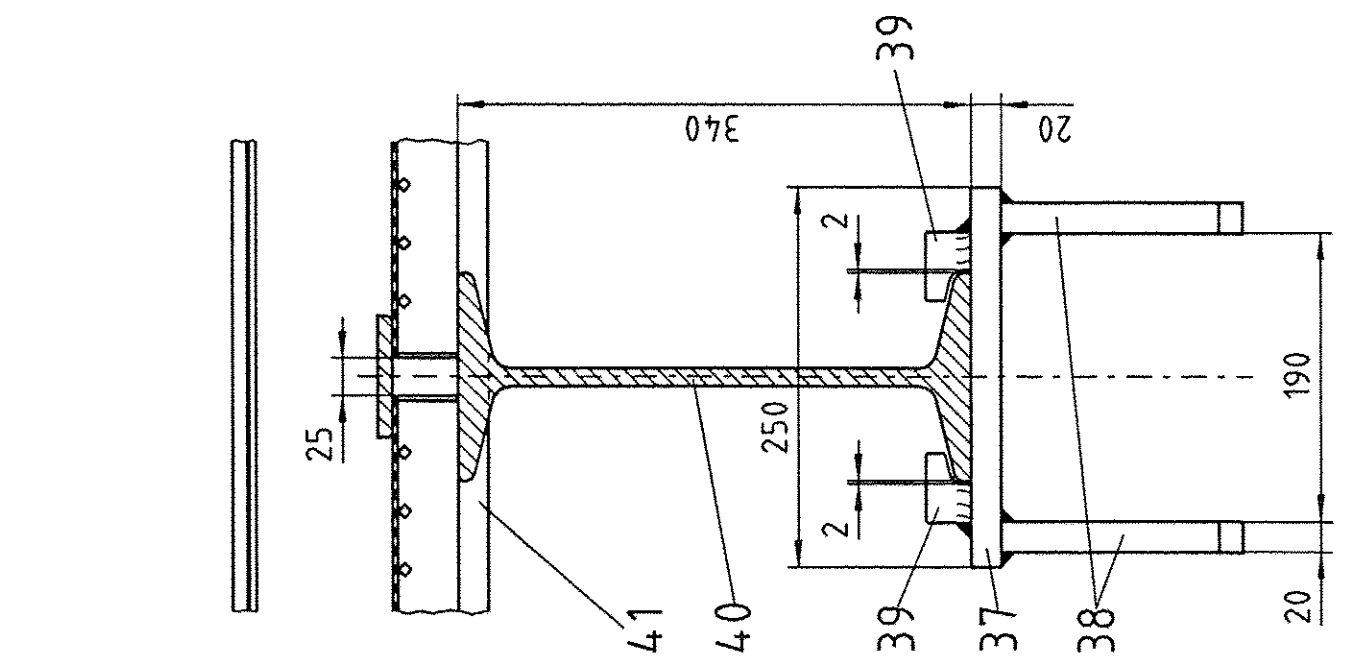
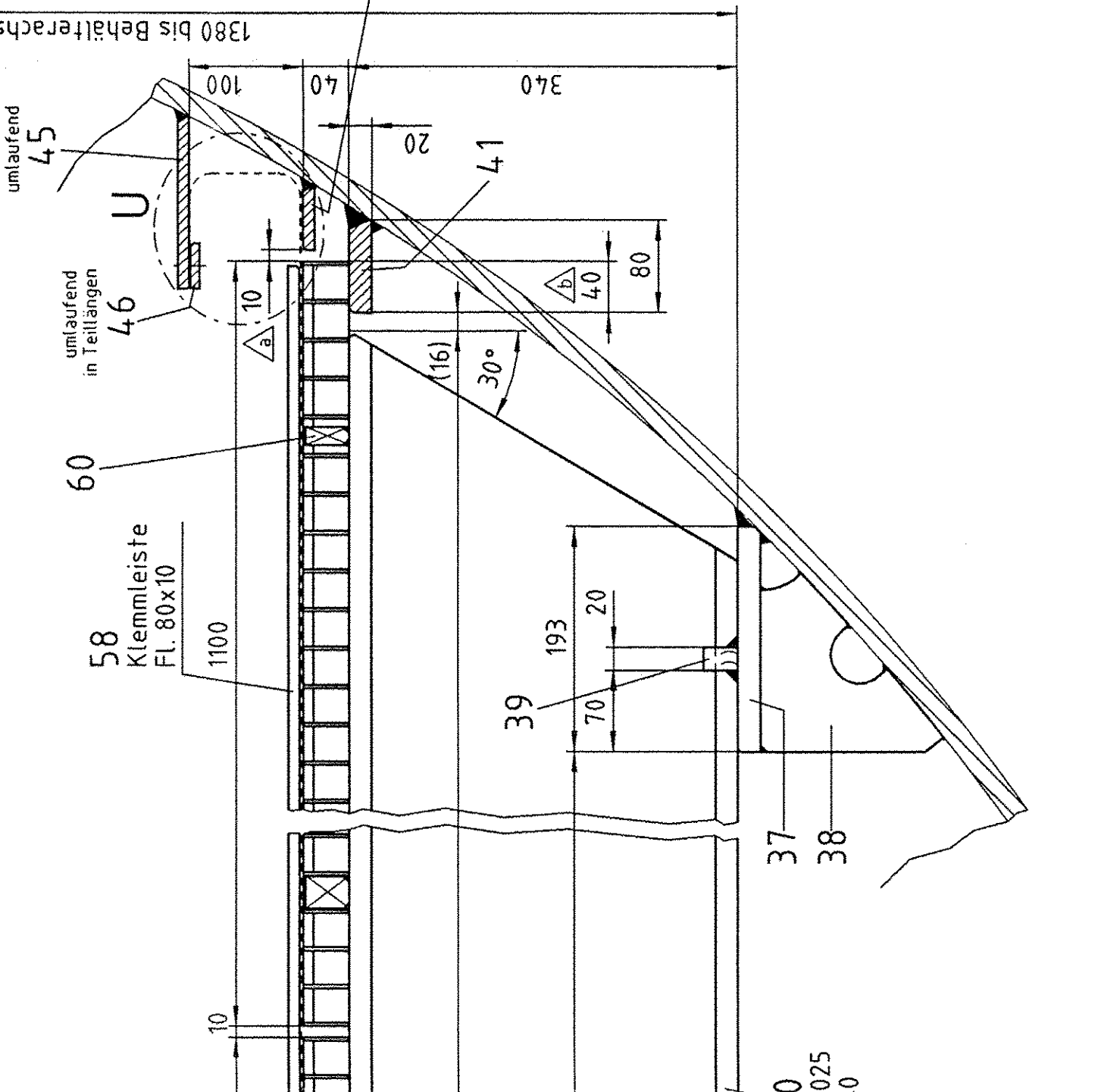
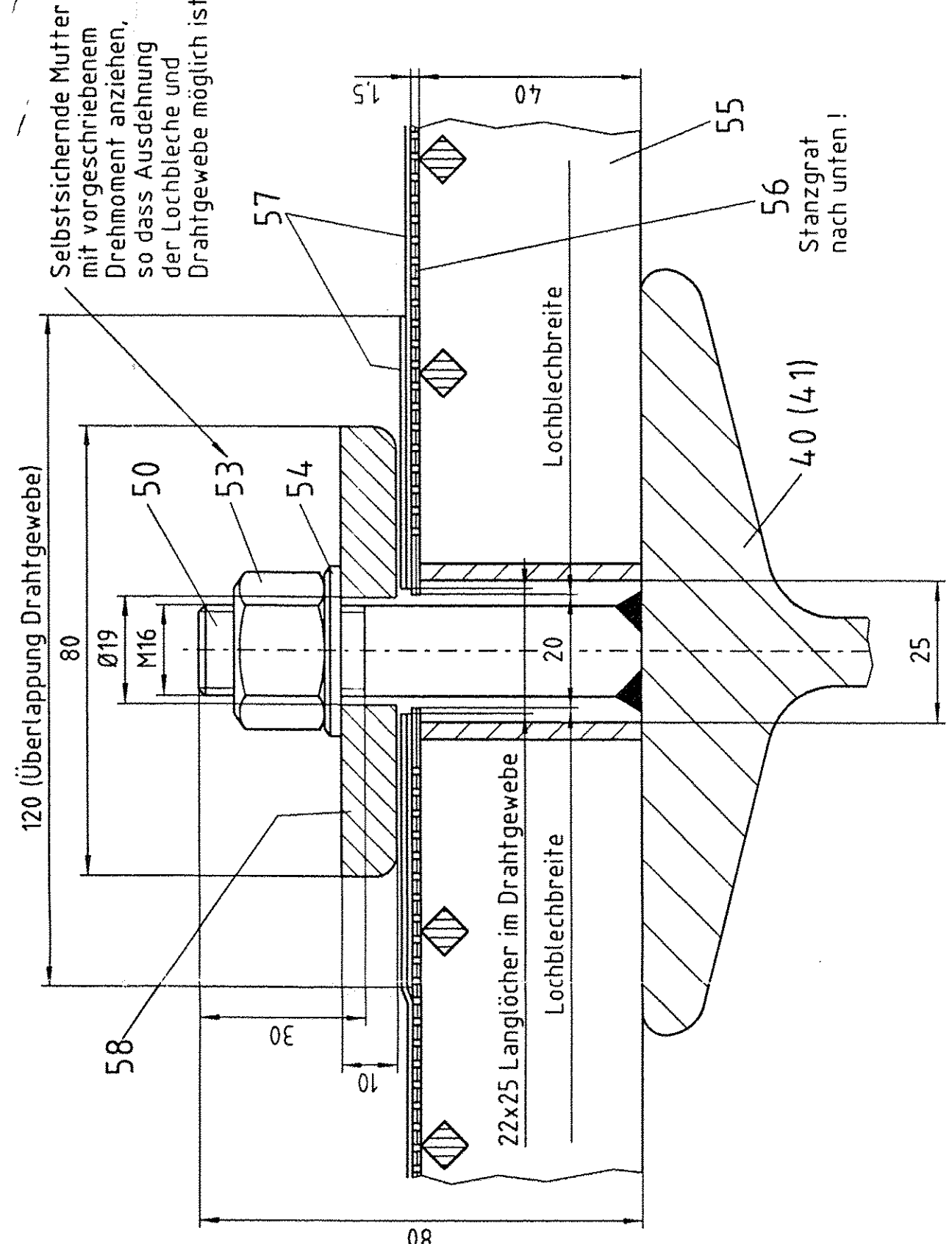
Drahtgewebe, 1mm Maschenweite, 0,35-0,4mm Draht-Ø (1.4.301)
(Maße sind abgewinkelte Längen vor dem Umbiegen der Ränder)
Löcher zur Befestigung bei Montagen herstellen



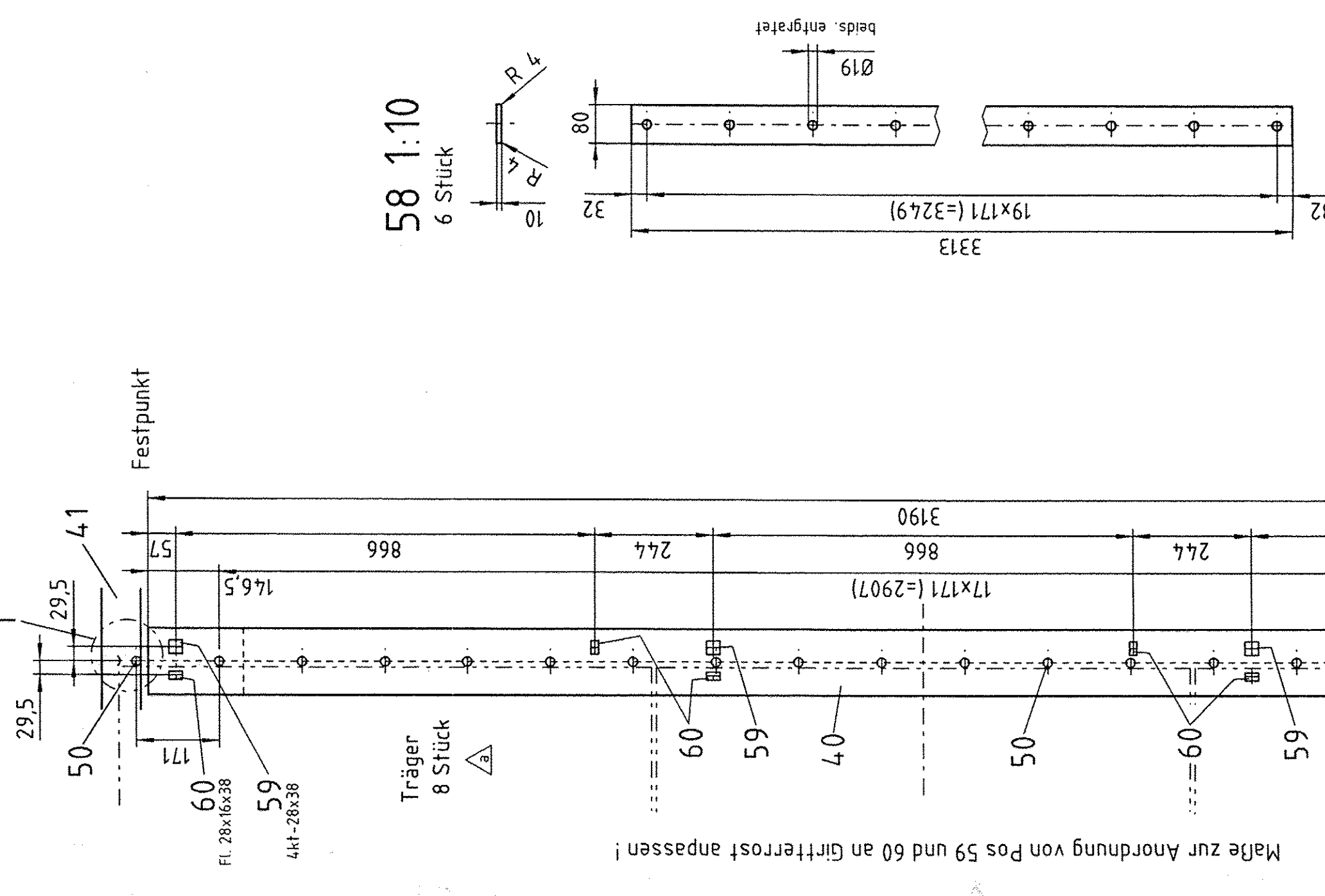
FESTLAGER



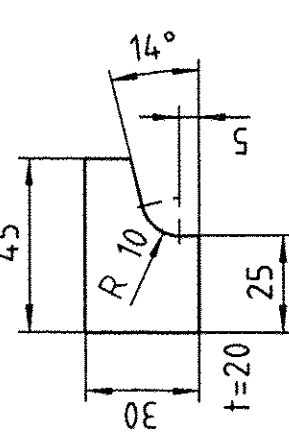
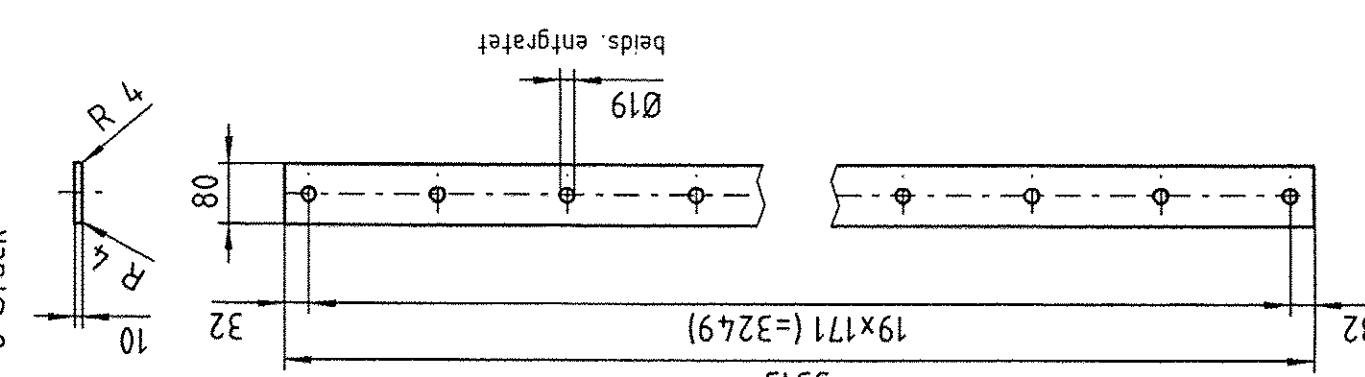
LOSLAGER

 $V_{1:1}$ 

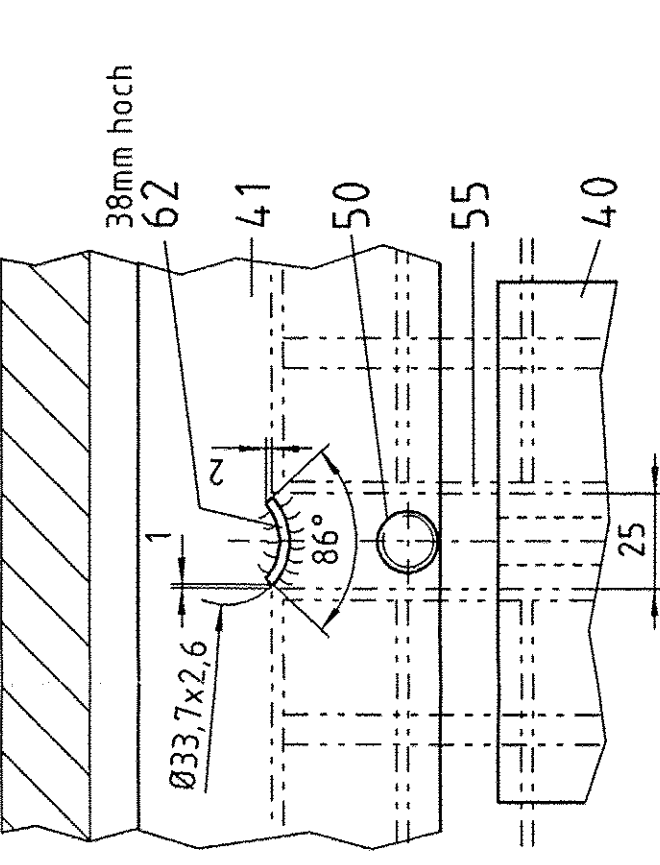
C-C 1:10



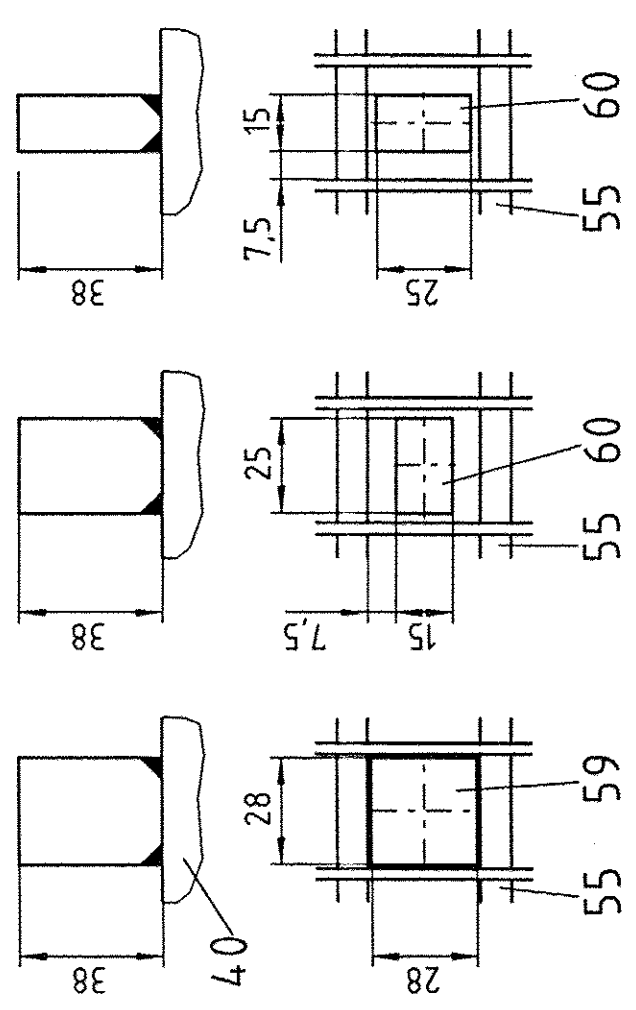
39 1:2

58 1:10
6 sticks

T 1:2

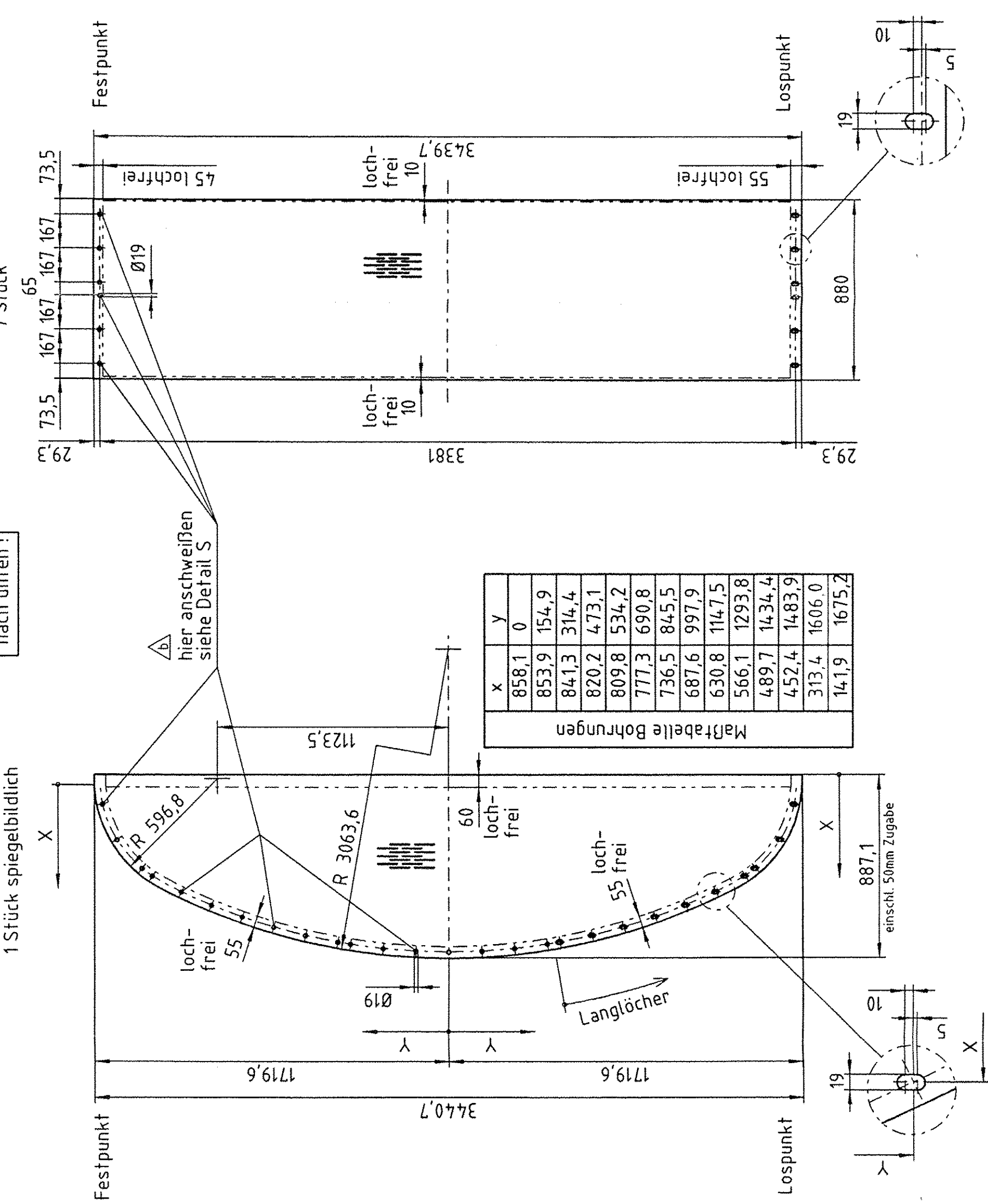


Einbaulage Pos 59,60 1:2

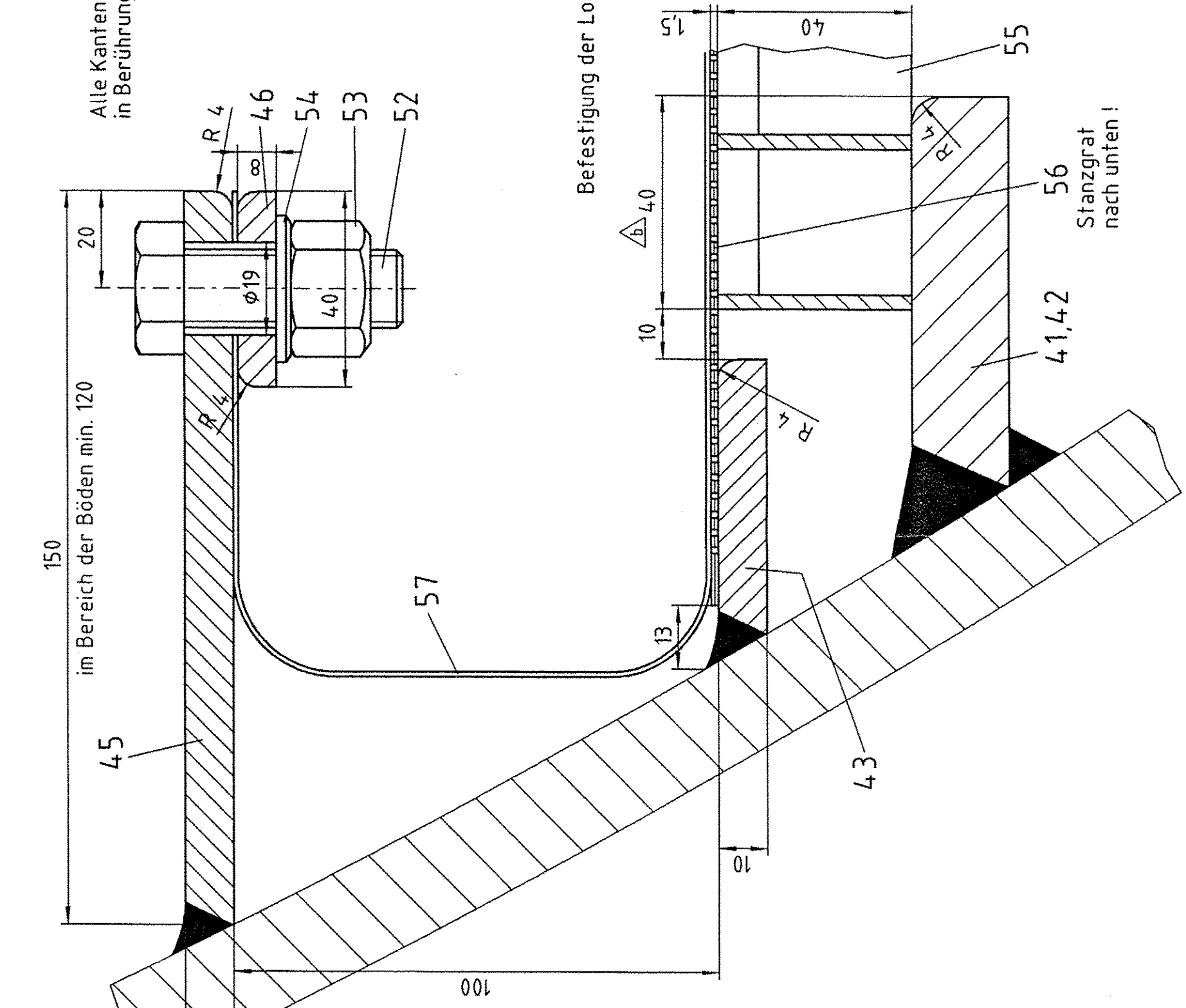
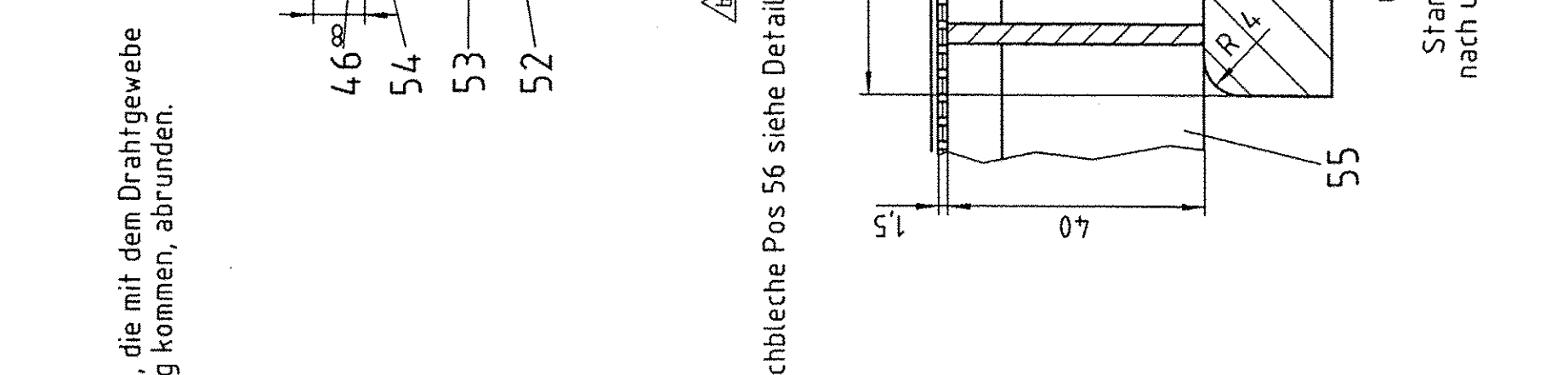


Pos 56 Lochblech L v 1,25x25-3,5-31 DIN 24043

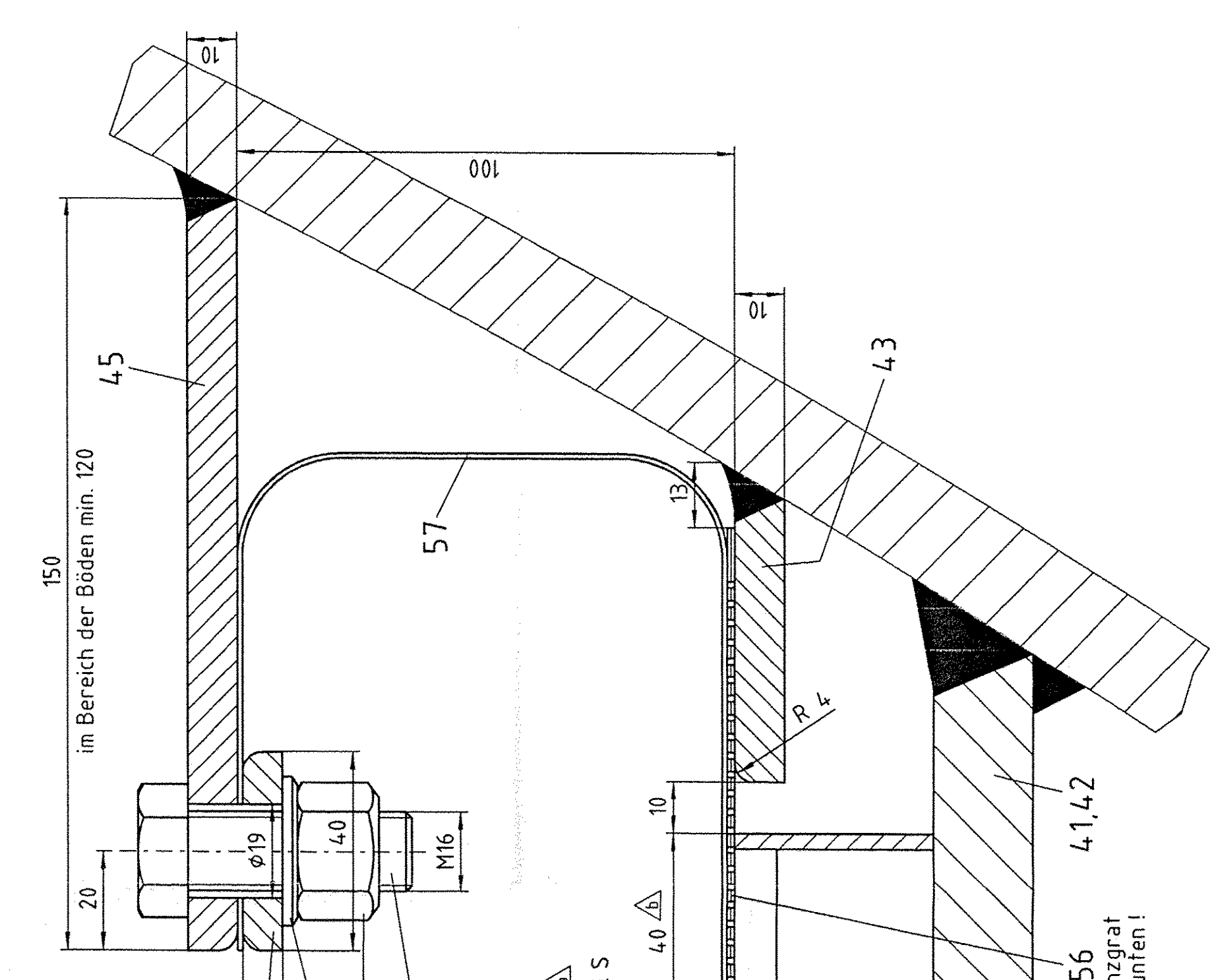
56.2 1:20 Stück wie gezeichnet



FESTLAGER


$$\cup 1:1$$


LOSLAGER



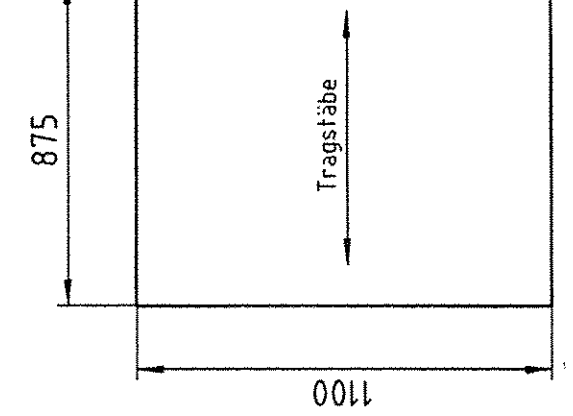
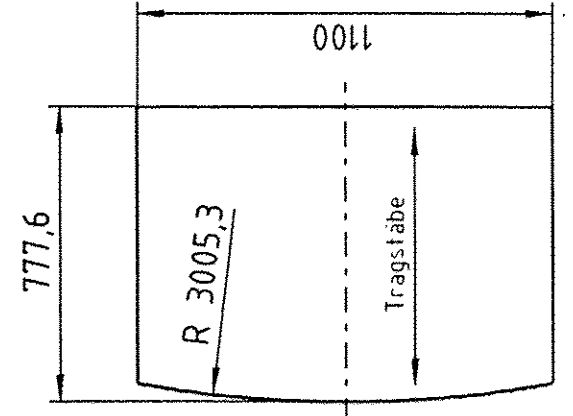
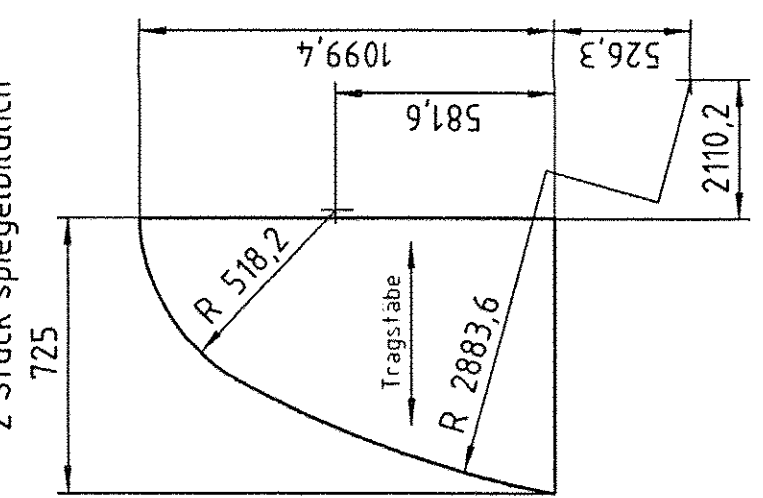
Pos 55 Gitterrost SP340-34/38-3

55.3 1:20

Stück wie gezeichnet
Stück einseitig bildlich

55.71:20
2 Stück

55.11:20
21 Stück



Maßtabelle Bohrungen	853,9	154,9	
	841,3	314,4	
	820,2	473,1	
	809,8	534,2	
	777,3	690,8	
	736,5	845,5	
	687,6	997,9	
	630,8	1147,5	
	566,1	1293,8	
	489,7	1436,4	
	452,4	1483,9	
	313,4	1606,0	
	141,9	1675,2	

[illegible]